

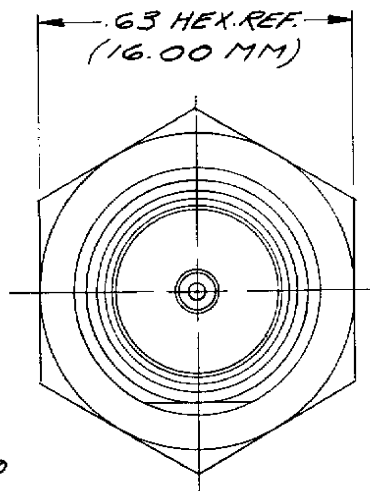
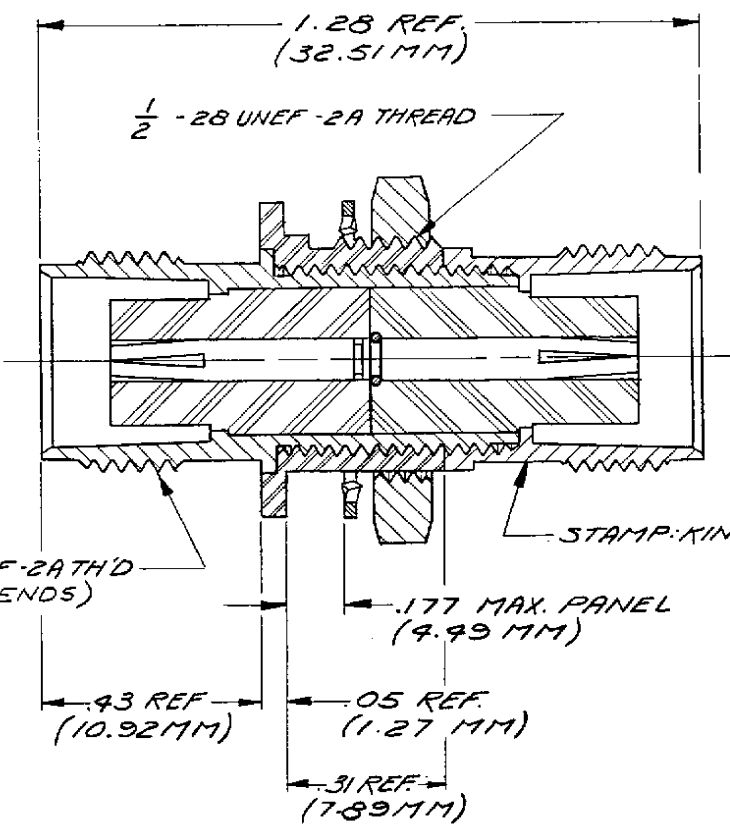
DASH NO. M CODE MADE FROM

KA-99-79

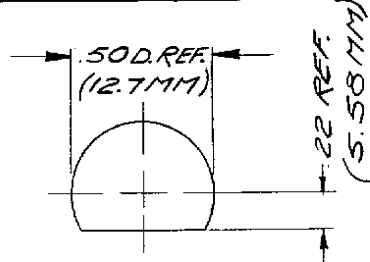
GSD

REVISIONS

ISSUE	CHANGES
5	CN 33415 E JCA 10/8/91



MOUNTING HOLE



NOTES:

1. MATERIALS:

- CENTER CONTACT - BERYLLIUM COPPER QQ-C-530
- C-RING - COPPER WIRE, HARD DRAWN QQ-W-360
- LOCKWASHER - PHOSPHOR BRONZE QQ-P-330
- ALL OTHER METAL PARTS - BRASS QQ-B-626
- INSULATORS - TEFLON L.P-403
- INSULATING BODY - DELRIN 150

2. FINISHES:

- CENTER CONTACT } SILVER PLATE .0002
- C-RING } MIN. PER QQ-5-365
- ALL OTHER METAL PARTS SILVER PLATE .0001 MIN. PER QQ-5-365

3. ELECTRICAL CHARACTERISTICS:

- NOMINAL IMPEDANCE - 50 Ω
- FREQUENCY RANGE - DC TO 11 GHz
- VOLTAGE RATING - 500 VOLTS RMS

GSD

SCALE:

USED ON:

REF:

TNC-TNC BULKHD. ADPT. (ISOLATED GROUND)

DRAWN PFS DATE 27 OCT 80

APPR. MJB DATE 29 OCT 80



KA-99-79

UNLESS OTHERWISE SPECIFIED:

- |   |   |
|---|---|
| <ul style="list-style-type: none"> <li>1. TOLERANCES: FRACTIONS &amp; 2 PLACE DECIMALS ± .010</li> <li>3 PLACE DECIMALS ± .004</li> <li>ANGLES ± 0°30'</li> <li>T. I. R. CONCENTRICITY OF ANY 2 DIAMETERS MAY NOT EXCEED HALF THE SUM OF THEIR TOLERANCES.</li> </ul> | <ul style="list-style-type: none"> <li>2. REMOVE ALL BURRS, BREAK SHARP EDGES .005 MAX.</li> <li>3. NO FILLETS PERMITTED.</li> <li>4. SURFACE ROUGHNESS 63 MICROINCHES RMS MAX.</li> <li>5. ALL DIMENSIONS PRIOR TO PLATING.</li> <li>6. ALL PLATING IN ACCORDANCE WITH KER 10004.</li> </ul> |
|---|---|

GSD