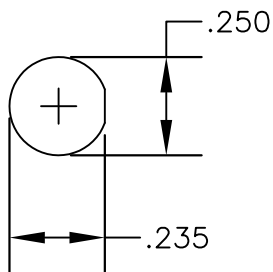
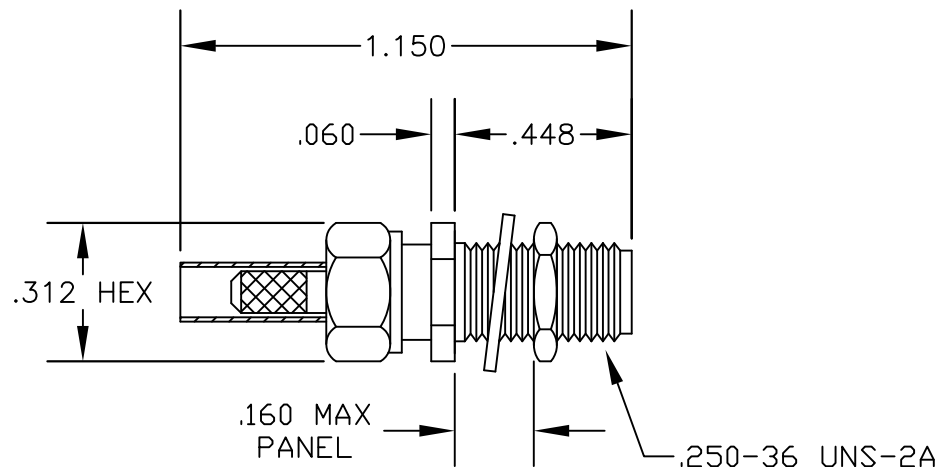


**MATERIALS**

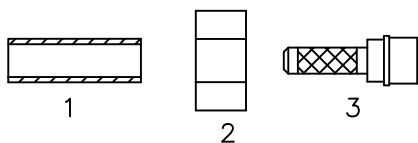
|                  |                            |
|------------------|----------------------------|
| <b>BODY</b>      | <b>BRASS NICKEL PLATED</b> |
| <b>CONTACT</b>   | <b>GOLD PLATED</b>         |
| <b>INSULATOR</b> | <b>PTFE</b>                |
| <b>FERRULE</b>   | <b>GOLD PLATED</b>         |



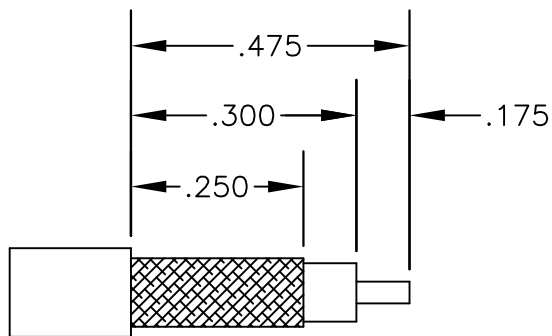
MOUNTING HOLE



ASSEMBLY PROCEDURES



1. STRIP CABLE AS SHOWN. DO NOT NICK CENTER CONDUCTOR. TIN CENTER CONDUCTOR.
2. SLIDE FERRULE (1) & CLAMP NUT (2) OVER CABLE. FLAIR BRAID & SLIDE WEDGE ASSEMBLY (3) UNDER BRAID WITH CENTER CONDUCTOR PROTRUDING THROUGH HOLE IN INSULATOR. SLIDE FERRULE (1) OVER BRAID & AGAINST EXTENSION. SOLDER FERRULE (1) TO BRAID THROUGH HOLE IN FERRULE.



STRIPPING DIMENSIONS

3. SOLDER CONTACT TO CENTER CONDUCTOR. CLEAN. INSERT CABLE ASSEMBLY INTO BODY & TIGHTEN.



**PASTERNACK ENTERPRISES, INC.**

P.O BOX 16759, IRVINE, CA 92623  
PHONE (949) 261-1920 FAX (949) 261-7451

WEB ADDRESS: [www.pasternack.com](http://www.pasternack.com)  
E-MAIL ADDRESS: [sales@pasternack.com](mailto:sales@pasternack.com)

**COAXIAL & FIBER OPTICS**

DWG TITLE

**PE4428**

DES.

SMA FEMALE, BULKHEAD, SOLDER  
ATTACHMENT FOR RG174, RG188 & RG316  
(CAPTIVE CONTACT)

SIZE A

**FSCM NO. 53919**

CAD FILE

051402

SCALE N/A

127

**NOTES:**

1. UNLESS OTHERWISE SPECIFIED ALL DIMENSIONS ARE NOMINAL.
2. ALL SPECIFICATIONS ARE SUBJECT TO CHANGE WITHOUT NOTICE AT ANY TIME.