

CTLSH4-200M364

4.0A, 200V

Low V_F Schottky Rectifier in the TLM364 package

Central Semiconductor's CTLSH4-200M364 is a high performance 4 Amp silicon Schottky rectifier designed for applications requiring high voltage capability and high levels of efficiency in a low profile package.

Features:

- Low forward voltage
- Low reverse leakage current
- High voltage

Applications:

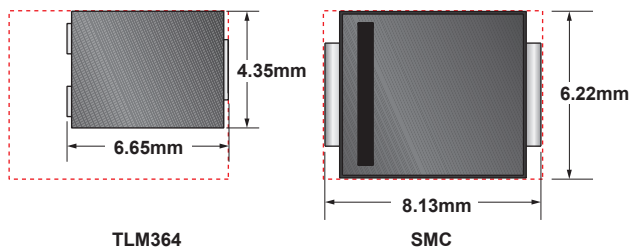
- DC-DC converters
- Reverse polarity protection
- By-pass diode

Benefits:

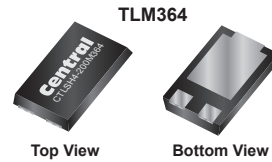
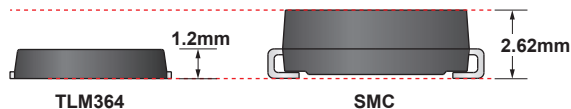
- Low total conduction losses
- High power density
- Small footprint and low profile

Package Size and Comparison:

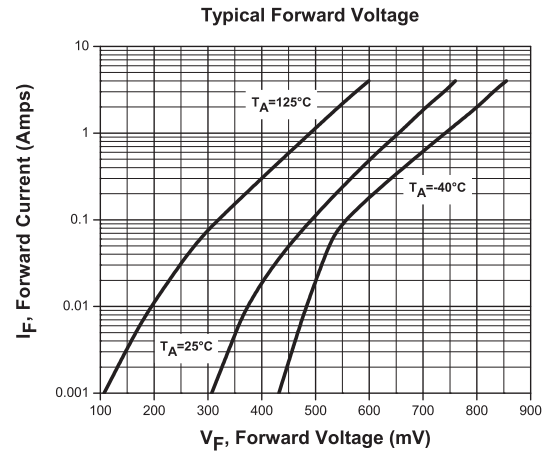
The TLM364 utilizes **42%** less board space than the SMC



The TLM364 has a **55%** lower profile than the SMC



Typical Electrical Characteristics



Samples



To order samples of this device visit:
www.centrasemi.com/info/CTLSH4-200M364

Weblink:

Use QR reader for direct link to product web page,
 or use: www.centrasemi.com/info/CTLSH4-200M364

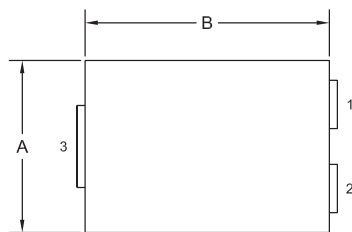


Maximum Ratings ($T_A = 25^\circ\text{C}$ unless otherwise noted)				Electrical Characteristics ($T_A = 25^\circ\text{C}$ unless otherwise noted)						
V_{RRM}	I_O	T_J, T_{stg}	Θ_{JA}	V_F		$@ I_F$	I_R		$@ V_R$	C_J
(V)	$T_L = 125^\circ\text{C}$	($^\circ\text{C}$)	($^\circ\text{C}/\text{W}$)	(V)	(V)	(A)	(μA)	(μA)	(V)	(pF)
MAX	MAX	MAX	MAX	TYP	MAX		TYP	MAX		TYP
200	4.0	-55 to +150	80	0.76	0.84	4.0	0.15	1.0	200	140
							*0.35mA	*10mA	200	

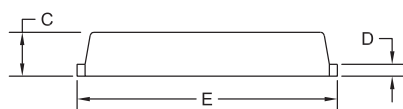
CTLSH4-200M364

4.0A, 200V Low V_F Schottky Rectifier in the TLM364 package

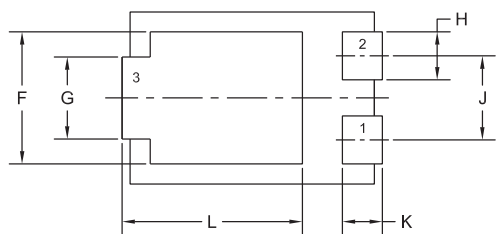
Mechanical Drawing - TLM364



TOP VIEW



SIDE VIEW



BOTTOM VIEW R0

SYMBOL	DIMENSIONS			
	INCHES		MILLIMETERS	
	MIN	MAX	MIN	MAX
A	0.167	0.172	4.25	4.35
B	0.238	0.243	6.05	6.15
C	0.039	0.048	1.00	1.20
D	0.009	0.014	0.25	0.35
E	0.250	0.262	6.35	6.65
F	0.128	0.136	3.25	3.45
G	0.076	0.085	1.95	2.15
H	0.044	0.052	1.10	1.30
J	0.083		2.10	
K	0.035	0.044	0.90	1.10
L	0.171	0.183	4.35	4.65

TLM364 (REV:R0)

Lead Code:

- 1) Anode
- 2) Anode
- 3) Cathode

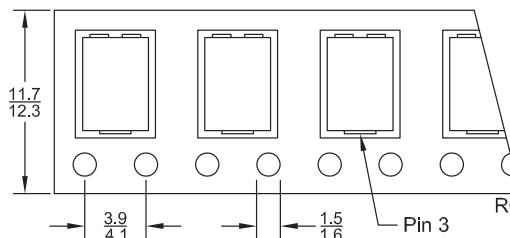
Marking Code:

CTLSH420

Tape Dimensions and Orientation

(Dimensions in mm)

Tape Width: 12mm

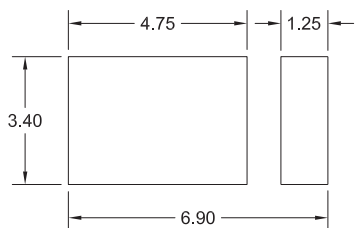


* Devices are taped in accordance with Electronic Industries Association Standard EIA-481-D

← Direction of Unreeling

Mounting Pad Geometry

(Dimensions in mm)



R0

Literature



Stay up to date on the latest new products from Central

Subscribe to Central's eNewsletter



www.centralsemi.com/subscribe

Packaging Base / Ordering Information

Reel Size	Quantity	Central Item No.
13"	5,000	CTLSH4-200M364 TR13

New

SMD SELECTION GUIDE

Order your selection guide today.

Visit: web.centralsemi.com/search/sample.php

Sample devices available upon request. To order samples of this device visit: www.centralsemi.com/info/CTLSH4-200M364



Innovative Discrete Semiconductors

For further information contact:
Sales at Central Semiconductor Corp.
(631) 435-1110 or visit:
www.centralsemi.com