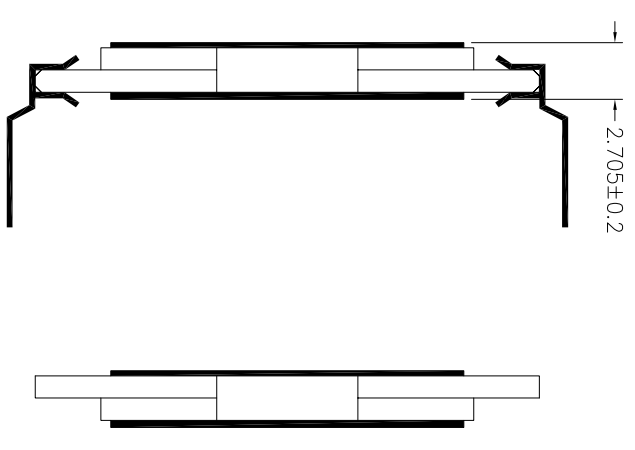
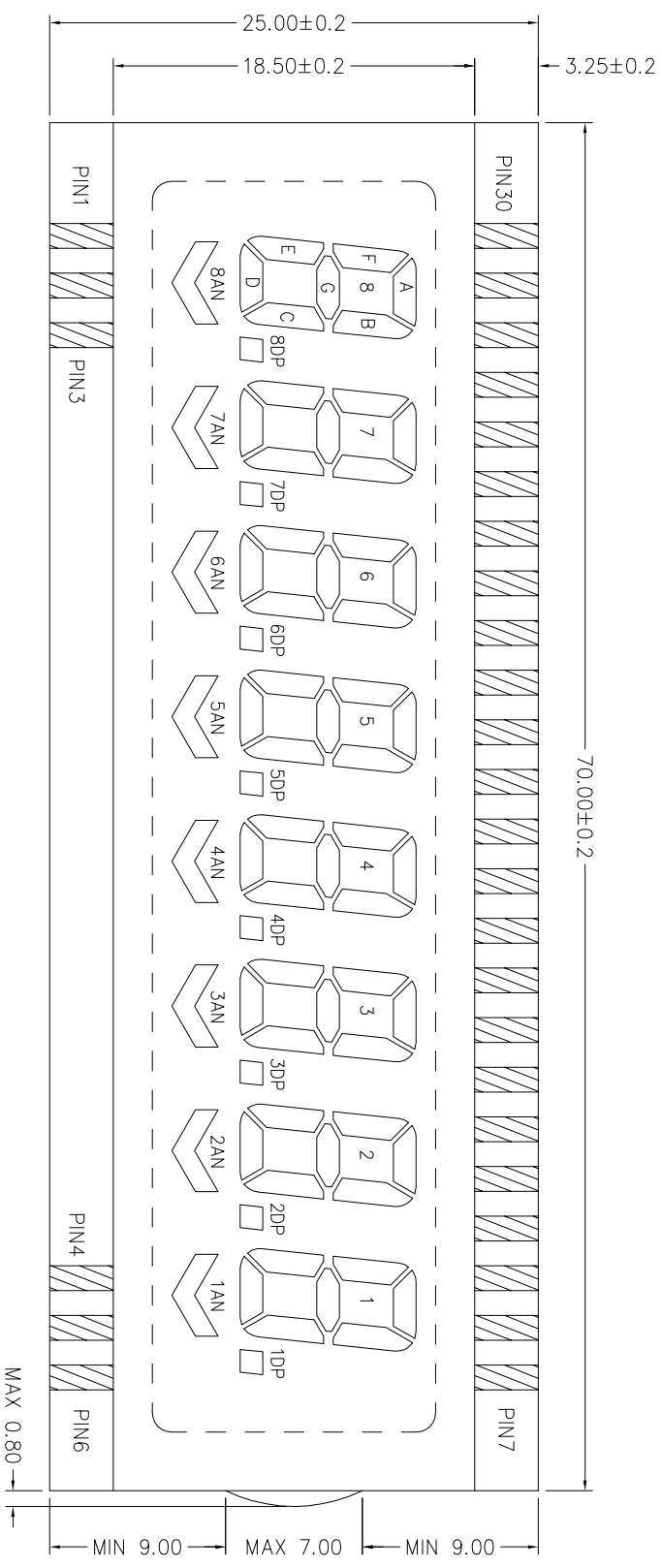


VIM-838



PIN	1	2	3	4	5	6	7	8	9	10	11	12	13	14	15	16	17	18	19	20	21	22	23	24	25	26	27	28	29	30
COM1	---	---	---	---	---	COM1	1B	1A	1F	2B	2A	2F	3B	3A	3F	4B	4A	4F	5B	5A	5F	6B	6A	6F	7B	7A	7F	8B	8A	8F
COM2	---	---	---	---	---	---	1C	1G	1E	2C	2G	2E	3C	3G	3E	4C	4G	4E	5C	5G	5E	6C	6G	6E	7C	7G	7E	8C	8G	8E
COM3	---	---	---	---	---	---	1DP	1D	1AN	2DP	2D	2AN	3DP	3D	3AN	4DP	4D	4AN	5DP	5D	5AN	6DP	6D	6AN	7DP	7D	7AN	8DP	8D	8AN

REMARK: SAME COMMON SHOULD BE CONNECTED TOGETHER ON P.C.B.