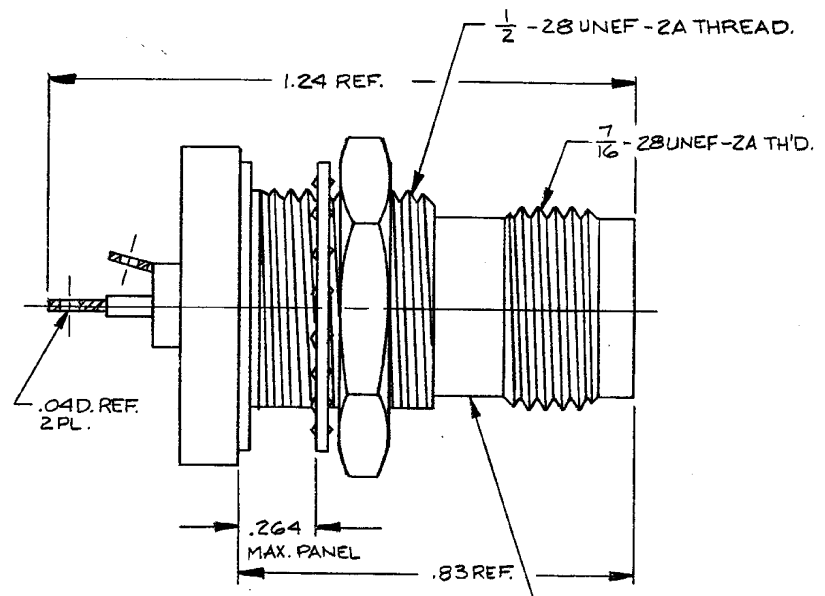


DASH NO. M CODE MADE FROM

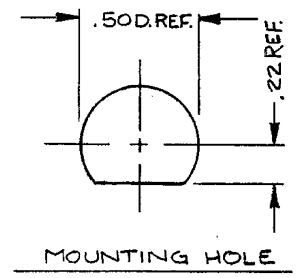
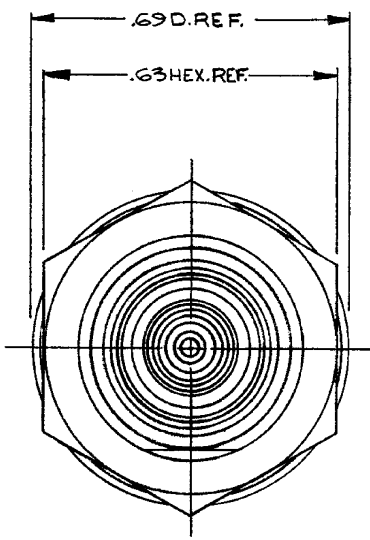


STAMP: 91836 M49142/10-0002
1944-8-5

NOTES:

1. MATERIALS:
 - GLASS SEAL: CENTER CONTACT } NICKEL & IRON COMPOSITION.
 - MIDDLE BAND } NICKEL & IRON COMPOSITION.
 - OUTER BAND: LEAD FREE LOW CARBON STEEL.
 - GLASS: GLASS PREFORM OF THE SODA LEAD FAMILY.
 - GASKET: SILICONE RUBBER PER ZZ-R-765.
 - LOCKWASHER: PHOS. BRONZE, QQ-B-750.
 - TRB CONTACT F: BER. COP. QQ-C-530.
 - INSULATORS: TEFLON, L-P-403.
 - ALL OTHER PARTS: BRASS, QQ-B-626.
2. FINISHES: GLASS SEAL TERMINALS: } GOLD PLT. PER MIL-G-45204.
- TRB CONTACT F: }
- ALL OTHER METAL PARTS: SILVER PLT. PER. QQ-S-365.
3. ELECTRICAL CHARACTERISTICS:
 - WORKING VOLTAGE: 400 VRMS.

- UNLESS OTHERWISE SPECIFIED:
- | | |
|--|--|
| 1. TOLERANCES: FRACTIONS & 2 PLACE DECIMALS ± .010 | 2. REMOVE ALL BURRS, BREAK SHARP EDGES .005 MAX. |
| 3 PLACE DECIMALS ± .004 | 3. NO FILLETS PERMITTED. |
| T. I. R. ANGLES ± 0°30' | 4. SURFACE ROUGHNESS 63 MICROINCHES RMS MAX. |
| T. I. R. CONCENTRICITY OF ANY 2 DIAMETERS MAY NOT EXCEED HALF THE SUM OF THEIR TOLERANCES. | 5. ALL DIMENSIONS PRIOR TO PLATING. |
| | 6. ALL PLATING IN ACCORDANCE WITH KER 10004. |



GSD
M49142/10-0002

REVISIONS	
ISSUE	CHANGES
0	ER 30045 RESTRICTED USAGE JCA 19 AUG 88
1	CN 30726 E JCA 13 APR 89

SCALE 4:1	
APPROX. SURFACE AREA	
1944-8-5	
USED ON	
REF.	
TRT HERMETIC BULKHEAD RECEPTACLE	
DRAWN JCA	DATE 19 AUG 88
APPR [Signature]	DATE 8-21-88
APPR	DATE

KINGS
ELECTRONICS CO., INC.
ROCKAWAY, NEW YORK 10767

M49142/10-0002

GSD

GSD