

# New Jersey Semi-Conductor Products, Inc.

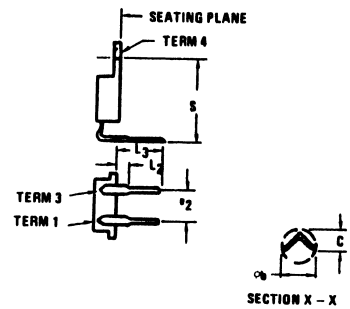
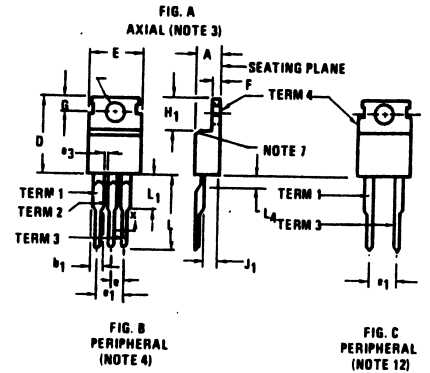
20 STERN AVE.  
 SPRINGFIELD, NEW JERSEY 07081  
 U.S.A.

TELEPHONE: (973) 376-2922  
 (212) 227-6005  
 FAX: (973) 376-8960

## PARAMETERS

2N6667  
 PNP DARLINGTON TRANSISTOR

Description: PNP Darlington Transistor  
 Manufacturer.....  
 Mil/High-Rel? (Y/N).....  
 I<sub>c</sub> Max. (A)..... 10  
 V<sub>br</sub> CEO..... 60  
 Max. PD (W)..... 26  
 Derate Above 25°C..... 520m  
 Min hFE..... 1.0k  
 Max. hFE..... 20k  
     @I<sub>c</sub> (test) (A)..... 5.0  
     @V<sub>CE</sub> (test)..... 3.0  
 Trans. Freq (Hz) Min..... 20M  
 I<sub>cbo</sub> Max. @V<sub>cb</sub> Max. (A)..... 3.0m%6  
 R(sat) (j)..... 300m  
 t(on) Delay (S).....  
 Tr Max. (s).....  
 t(stor) Max. (S).....  
 t(f) Max. (S).....  
 Mat..... Silicon  
 Oper. Temp (°C) Max..... 150u  
 Pkg Style..... TO-220AB  
 Surface Mounted (Y/N)..... N  
 Pinout Equivalence Number..... 3-37



u Junction Temperature % @ above 125°C 2 It(rms)  
 Derating Begins at 100°C 6 ICEV

SYMBOL	Y220			NOTE	Y220			NOTE	Y220			NOTE
	MIN	MAX			MIN	MAX			MIN	MAX		
A	3.56	4.82		3.56	4.82		3.56	4.82				
b <sub>1</sub>	1.15	1.77		1.15	1.77		.99	1.40				
pb	.51	1.14	5	.51	1.14	5	.51	1.14	5			
c	.31	1.14	5	.31	1.14	5	.31	1.14	5			
D	14.23	15.87		14.23	16.51		14.23	16.51				
E	9.66	10.66	6	9.66	10.66	6	9.66	10.66	6			
e	-	-		2.29	2.79	9	-	-				
e <sub>1</sub>	-	-		4.83	5.33	9	-	5.08	BSC			
e <sub>2</sub>	4.83	5.33	8	-	-		-	-				
e <sub>3</sub>	-	-		1.15	-		-	-				
f	.51	1.39		.51	1.39		.51	1.39				
H <sub>1</sub>	5.85	6.85	6	5.85	6.85	6	5.85	6.85	6			
J <sub>1</sub>	2.04	2.92		2.04	2.92		2.04	2.92				
J <sub>2</sub>	-	-		12.70	14.73		12.70	14.73				
L <sub>1</sub>	-	-		-	6.35		-	6.35				
L <sub>2</sub>	-	1.27		-	-		-	-				
L <sub>3</sub>	8.64	10.71		-	-		-	-				
L <sub>4</sub>	-	-		-	-		-	.51				
pp	3.531	3.733		3.54	4.08		3.531	3.733				
Q	2.51	3.04		2.54	3.42		2.54	3.04				
s	14.72	15.49		-	-		-	-				

### NOTES:

1. DIMENSIONING AND TOLERANCING PER ANSI Y14.5-1973.
2. FIGURE A, AXIAL TERMINAL CONFIGURATION APPLICABLE.
3. FIGURE B, PERIPHERAL TERMINAL CONFIGURATION APPLICABLE.
4. ALTERNATE LEAD CONFIGURATION ALLOWED WITHIN C AND D.
5. TAB CONTOUR OPTIONAL WITHIN M AND F.
6. CHAMFER OPTIONAL.
7. POSITION OF LEAD TO BE MEASURED .050 - .055 BELOW SEATING PLANE.
8. POSITION OF LEAD TO BE MEASURED .250 - .255 FROM BOTTOM OF DIMENSION L.



NJ Semi-Conductors reserves the right to change test conditions, parameter limits and package dimensions without notice. Information furnished by NJ Semi-Conductors is believed to be both accurate and reliable at the time of going to press. However NJ Semi-Conductors assumes no responsibility for any errors or omissions discovered in its use. NJ Semi-Conductors encourages customers to verify that datasheets are current before placing orders.