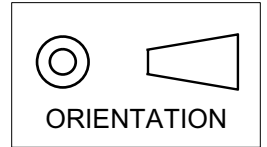


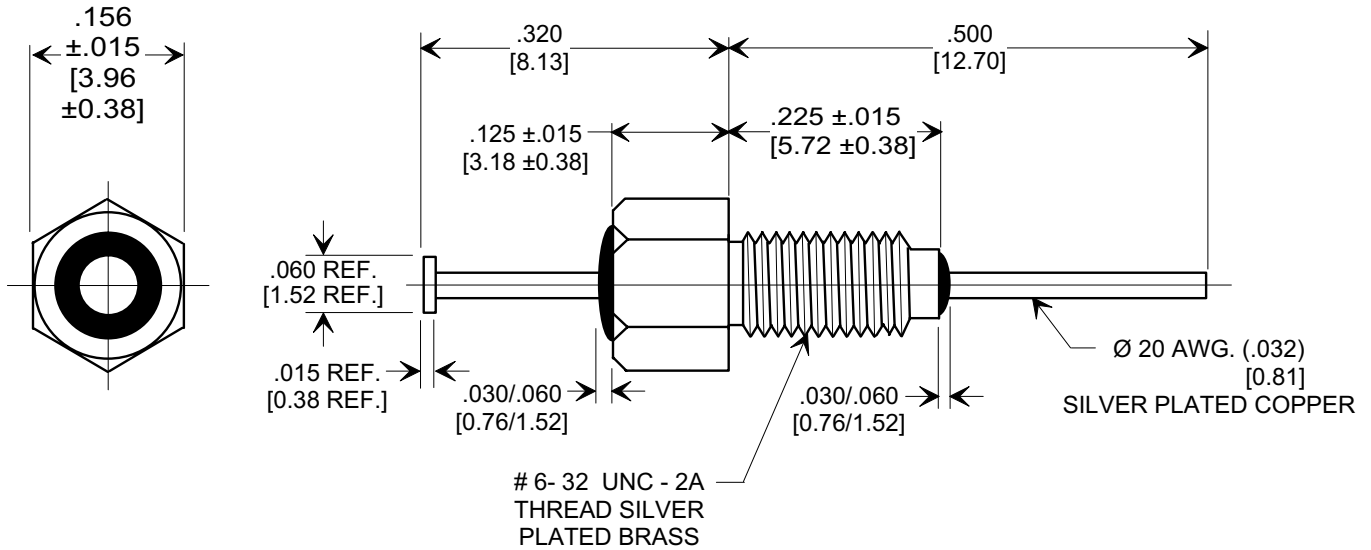
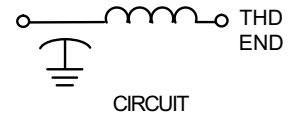
MARKETING SALES DRAWING

DIMENSIONS IN INCHES - DO NOT SCALE THIS DRAWING
DIMENSIONS IN METRIC - []

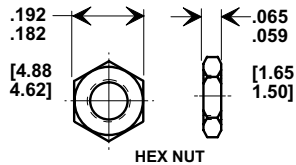
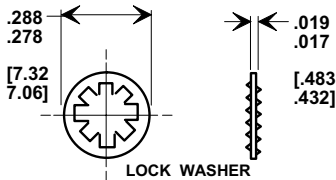
This drawing is the property of Tusonix, Inc., and may not be used, reproduced, published or disclosed to others without expressed authorization by Tusonix Inc.



Electrical Testing per Tusonix standard test plans and Mil-Std-202 Test Methods.



MOUNTING HARDWARE



NOTES:

- TUSONIX STANDARD PART NUMBER: 4402-060.
TUSONIX RoHS COMPLIANT PART NUMBER: 4402-060 LF.
CUSTOMER MUST SPECIFY STANDARD OR RoHS PART NUMBER WHEN ORDERING.
- LEAD, BUSHING AND MOUNTING HARDWARE: SILVER PLATED.
- PART MARKING: TRADEMARK AND VARIATION NUMBER ON HEX FLATS.
- STANDARD PART: BLACK INK. RoHS PART: GREEN INK.
- OPERATING TEMPERATURE RANGE: -55°C TO +125°C.
- MAX. RECOMMENDED SOLDERING TEMPERATURE: 260°C.
- SUPPLIED WITH HEX NUT AND INTERNAL TOOTH LOCK WASHER.
- MAX. RECOMMENDED MOUNTING TORQUE: 2.0 Lb.-IN.

| MIN. CAP.(pf) | DC WORKING VOLTAGE | DC CURRENT (AMPS) | I.R. MIN. @ 100 (VDC) | DWV (VDC) | MINIMUM NO LOAD INSERTION LOSS (dB) AT 25°C PER MIL-STD-220 | | | | |
|---------------|--------------------|-------------------|-----------------------|-----------|---|--------|---------|-------|--------|
| | -55° C TO 125° C | | | | 1 MHz | 10 MHz | 100 MHz | 1 GHz | 10 GHz |
| 27,000 | 100 | 10 A | 10 G Ω | 150 | 10 | 28 | 45 | 65 | --- |

| | | | | |
|---|-----------------------------------|----------------------------|--|--|
| X-2015 Rev-0 REVISION RECORD Original Release C.O. 19980403-8-02 ADDED AND REVISED NOTES. ADDED IR & DWV. S.M. 05-03-06 20060501-2-02 | 0 | 1 | --TOLERANCES-- Unless Otherwise Specified | Title BUSHING STYLE EMI FILTER |
| | DECIMAL ± .031 [79] | | | |
| | ANGLES ± | Drawn S.M. 04-06-98 | | |
| | TUSONIX TUCSON, ARIZONA | Approved J.Mc. 04-06-98 | | |
| | | | A | 4402-060 |