



Solid State Devices, Inc.

14701 Firestone Blvd * La Mirada, Ca 90638
 Phone: (562) 404-4474 * Fax: (562) 404-1773
 ssdi@ssdi-power.com * www.ssdi-power.com

SDA316A thru SDA316E

5 AMPS, 50 – 600 VOLTS STANDARD RECOVERY THREE PHASE BRIDGE RECTIFIER

Designer's Data Sheet

Part Number/Ordering Information ^{1/}

SDA316

L Screening ^{2/}

— = Not Screened

TX = TX Level

TXV = TXV

S = S Level

Peak Inverse Voltage (per leg)

A = 50V, B = 100V, C = 200V,

D = 400V, E = 600V.

FEATURES:

- Average Output Current 5 Amps @ 55°C
- PIV 50 to 600 Volts Per Leg
- Efficient Thermal Design
- Insulated Electrical Connections
- Hermetically Sealed
- Aluminum Case
- Available in Fast, Ultra Fast and Hyper Fast Versions
- Available in Higher Voltages
- TX, TXV, and S-Level Screening Available

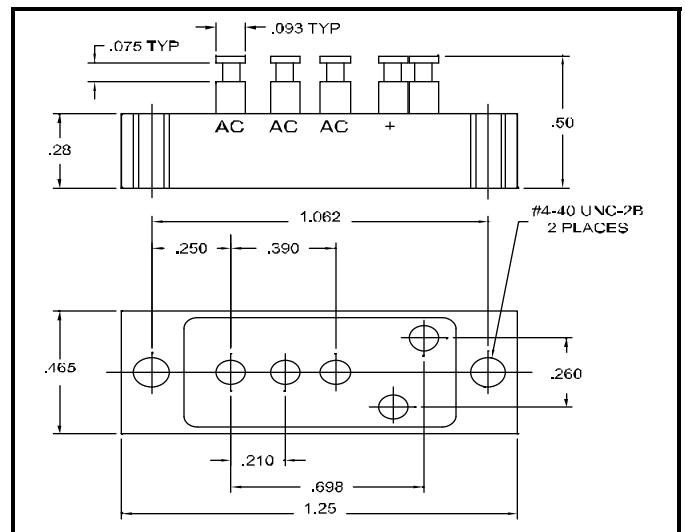
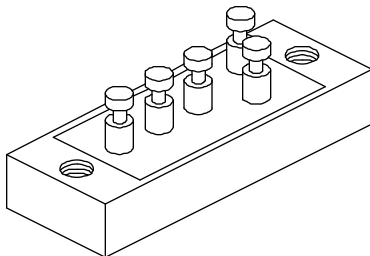
ELECTRICAL CHARACTERISTICS ^{3/}

Part Number	Peak Inverse Voltage (per leg)	Sine Wave RMS Input Voltage Max.	Reverse ^{4/} Recovery Time	Average DC Output Current T _c =Case Temp		Average DC Output Current T _A = Ambient Temp (no heat sink)		Peak DC Output (1 Sec. Max.)	Peak Forward Surge Current (1 Cycle)	Peak Repetitive Forward Current	Maximum Forward Voltage (per leg) @ 3 ADC	Maximum Reverse Current (per leg) @ PIV	
				I _{F(AV)}	I _{F(AV)}	I _{F(AV)}	I _{F(AV)}					I _R	I _R
Symbol	PIV	V _r	T _{rr}	I _{F(AV)}		I _{F(AV)}		I _{FSM}	I _{FSM}	I _{FRM}	V _F	I _R	
Units	Volts	Volts	µs	Amps		Amps		Amps	Amps	Amps	Volts	µA	
Conditions			Max	55°C	100°C	25°C	55°C	55°C				25°C	100°C
SDA316A	50	35	5	5.0	3.0	2.0	1.5	10	50	15	1.2	3	75
SDA316B	100	70	5	5.0	3.0	2.0	1.5	10	50	15	1.2	3	75
SDA316C	200	140	5	5.0	3.0	2.0	1.5	10	50	15	1.2	3	75
SDA316D	400	280	5	5.0	3.0	2.0	1.5	10	50	15	1.2	3	75
SDA316E	600	420	5	5.0	3.0	2.0	1.5	10	50	15	1.2	3	75

SDA316A thru SDA316E ^{5/}:

NOTES:

- 1/ For Ordering Information, Price, and Availability- Contact Factory.
- 2/ Screened to MIL-PRF-19500.
- 3/ Unless Otherwise Specified, All Electrical Characteristics @25°C.
- 4/ Recovery Conditions: I_F = 0.5 Amp, I_R = 1.0 Amp rec. to .25 Amp.
- 5/ For Information on Curves, Contact Factory for Assistance.



NOTE: All specifications are subject to change without notification. SCD's for these devices should be reviewed by SSDI prior to release.

DATA SHEET #: RA0036A

DOC