

Mini Drum Inductors

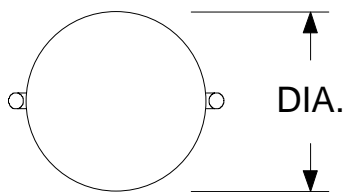
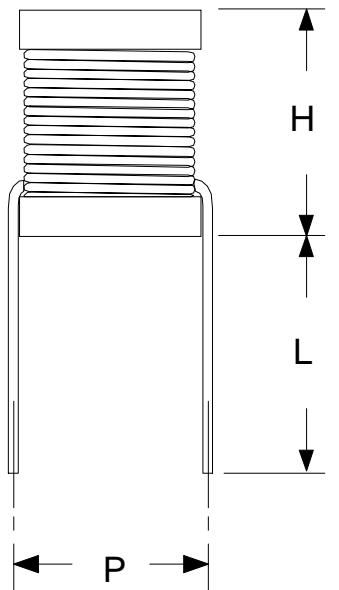
HIGH CURRENT PER VOLUME

Designed for Noise, Spike & Filtering applications.

Electrical Specifications at 25°C

Part Number	L ⁽¹⁾	DCR	I
	± 20% (μH)	Nom. (mΩ)	Max. (A)
L-503	4.3	4.4	6.0

1. Tested at 100 kHz & 1 V_{RMS}



Height dimensions are without solder joint or coatings

LEADS ARE #18 AWG

Applications

Power Supplies

Filters

SCR and Triac Controls

OEM Equipment

Telephones

TV, CRT'S, VCR'S

Appliances

Coils finished with UL rated varnish.

Variations on electrical parameters of parts listed are available - Please contact factory.

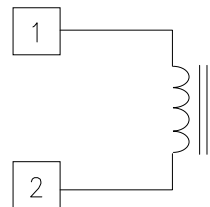
Pre-Tinned Leads

(up to bottom of core)

Physical Dimensions inches (mm)

Reference Dimensions in Inches (mm)			
H	DIA.	P	L
.59 (15.0)	.49 (12.4)	.40 (10.1)	.75 (19.0)

Schematic Diagram



RHOMBUS P/N: L-503

CUST P/N:

NAME:

DATE: 3/15/01

SHEET: 1 OF 1