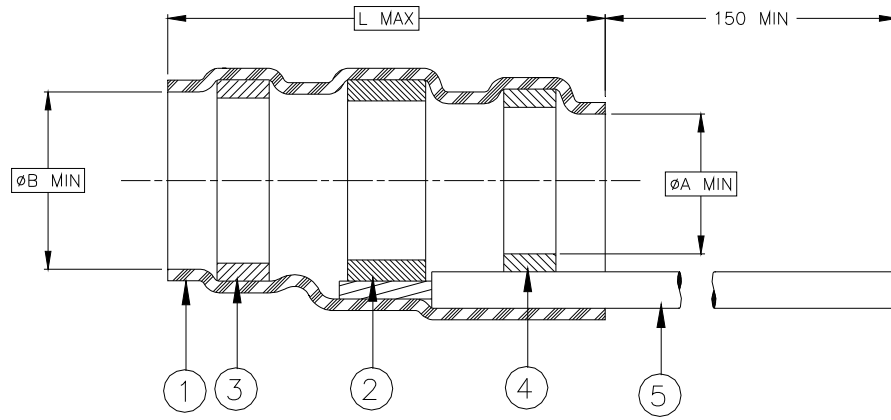


CUSTOMER DRAWING



Part Name	Component Dimensions			Cable Dimensions				
	A min	B min	L max	D max	E min	F min	G max	J±0.5 (J±.020)
B-151-05	4.3 (.169)	4.8 (.189)	29.3 (1.154)	4.8 (.189)	2.0 (.079)	1.5 (.059)	4.3 (.169)	9.0 (.354)
B-151-07	6.4 (.250)	7.3 (.290)	32.5 (1.280)	7.3 (.290)	3.3 (.130)	2.8 (.110)	6.4 (.250)	11.0 (.435)
B-151-11	10.0 (.395)	11.5 (.450)	35.5 (1.395)	11.5 (.450)	4.5 (.175)	4.0 (.155)	10.0 (.395)	13.0 (.510)
B-151-13	13.0 (.510)	15.1 (.595)	45.5 (1.790)	15.1 (.595)	7.0 (.275)	6.5 (.255)	13.0 (.510)	17.0 (.670)
B-151-17	16.5 (.650)	19.0 (.750)	55.0 (2.165)	18.0 (.710)	9.0 (.355)	8.0 (.315)	16.0 (.630)	23.0 (.905)

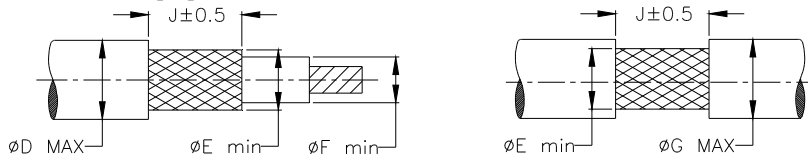
MATERIAL

- INSULATION SLEEVE: Radiation cross-linked modified polyolefin. Transparent clear.
- SOLDER PREFORM WITH FLUX:
SOLDER: TYPE Cd18 per ANSI J-STD-006.
FLUX: TYPE ROM1 per ANSI J-STD-004.
- & 4. MELTABLE SEALING RINGS: Thermally stabilized thermoplastic.
- GROUND LEAD: RAYCHEM 100G0111-1.00-9, stranded tin plated copper. Color: white.

APPLICATION

- These controlled soldering devices are designed for termination of a bare or tin plated copper shield on a cable having an insulation rated for at least 85°C.
- Temperature range: -55°C to +125°C.
- For installation procedure and application equipment consult RPIP-688-01.

For best results, prepare the cable as shown:



		TE Connectivity 300 Constitution Dr Menlo Park, CA 94025, U.S.A.	TITLE: SOLDERSLEEVE LOW-FIRE-HAZARD WITH PRE-INSTALLED LEAD.		
Unless otherwise specified dimensions are in millimeters. [Inches dimensions are shown in brackets]		Raychem Devices	DOCUMENT NO.: B-151-XX		
TOLERANCES: 0.00 N/A 0.0 N/A 0 N/A	ANGLES: N/A ROUGHNESS IN MICRON	TE Connectivity reserves the right to amend this drawing at any time. Users should evaluate the suitability of the product for their application.		REV: E1	DATE: 15-Apr-11
REVISED BY: HMR	CAGE CODE: 06090	ECO NUMBER: ECO-11-005139	SCALE: NTS	SIZE: A	SHEET: 1 of 1