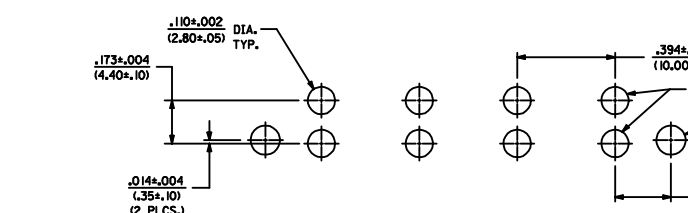
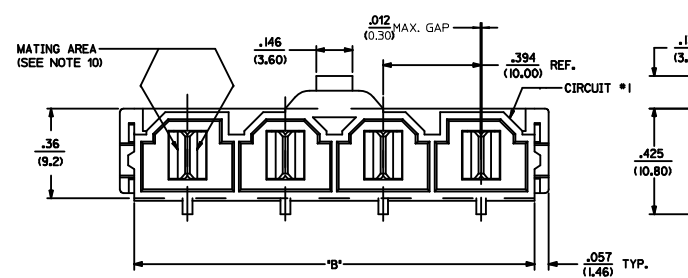
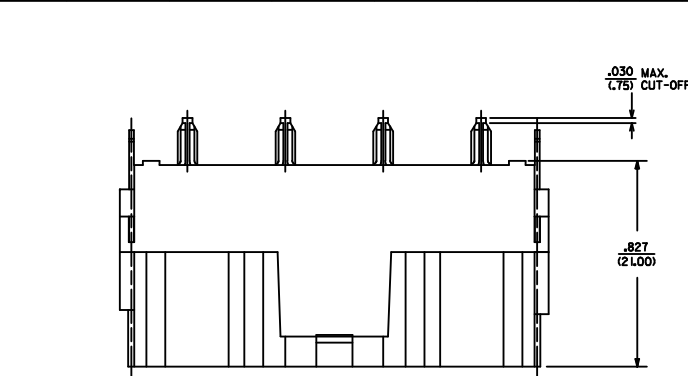
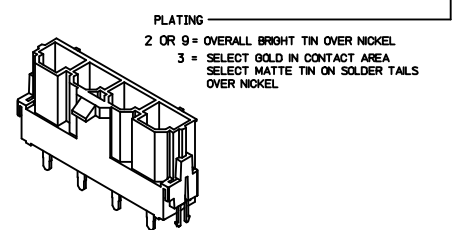
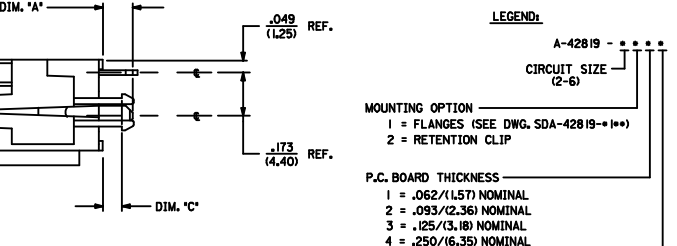


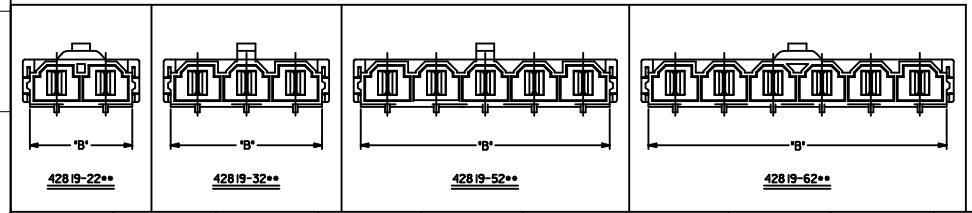
ITEM NUMBER	CKT. SIZE	DIM. 'A'	DIM. 'B'	DIM. 'C'	TERMINAL PLATING	CLIP PLATING
42819-2212	2	.138/(3.50)	.823/(20.90)	.071/(1.80)		
42819-2222	2	.201/(5.10)	.823/(20.90)	.102/(2.60)		
42819-2229	2	.201/(5.10)	.823/(20.90)	.102/(2.60)		
42819-2232	2	.201/(5.10)	.823/(20.90)	.134/(3.40)		
42819-2242	2	.327/(8.30)	.823/(20.90)	.259/(6.58)		
42819-3212	3	.138/(3.50)	1.216/(30.90)	.071/(1.80)		
42819-3222	3	.201/(5.10)	1.216/(30.90)	.102/(2.60)		
42819-3232	3	.201/(5.10)	1.216/(30.90)	.134/(3.40)		
42819-3242	3	.327/(8.30)	1.216/(30.90)	.259/(6.58)		
42819-4212	4	.138/(3.50)	1.610/(40.90)	.071/(1.80)		
42819-4222	4	.201/(5.10)	1.610/(40.90)	.102/(2.60)		
42819-4232	4	.201/(5.10)	1.610/(40.90)	.134/(3.40)		
42819-4242	4	.327/(8.30)	1.610/(40.90)	.259/(6.58)		
42819-5212	5	.138/(3.50)	2.004/(50.90)	.071/(1.80)		
42819-5222	5	.201/(5.10)	2.004/(50.90)	.102/(2.60)		
42819-5232	5	.201/(5.10)	2.004/(50.90)	.134/(3.40)		
42819-5242	5	.327/(8.30)	2.004/(50.90)	.259/(6.58)		
42819-6212	6	.138/(3.50)	2.398/(60.90)	.071/(1.80)		
42819-6222	6	.201/(5.10)	2.398/(60.90)	.102/(2.60)		
42819-6232	6	.201/(5.10)	2.398/(60.90)	.134/(3.40)		
42819-6242	6	.327/(8.30)	2.398/(60.90)	.259/(6.58)		
42819-2213	2	.138/(3.50)	.823/(20.90)	.071/(1.80)		
42819-2223	2	.201/(5.10)	.823/(20.90)	.102/(2.60)		
42819-2233	2	.201/(5.10)	.823/(20.90)	.134/(3.40)		
42819-2243	2	.327/(8.30)	.823/(20.90)	.259/(6.58)		
42819-3213	3	.138/(3.50)	1.216/(30.90)	.071/(1.80)		
42819-3223	3	.201/(5.10)	1.216/(30.90)	.102/(2.60)		
42819-3233	3	.201/(5.10)	1.216/(30.90)	.134/(3.40)		
42819-3243	3	.327/(8.30)	1.216/(30.90)	.259/(6.58)		
42819-4213	4	.138/(3.50)	1.610/(40.90)	.071/(1.80)		
42819-4223	4	.201/(5.10)	1.610/(40.90)	.102/(2.60)		
42819-4233	4	.201/(5.10)	1.610/(40.90)	.134/(3.40)		
42819-4243	4	.327/(8.30)	1.610/(40.90)	.259/(6.58)		
42819-5213	5	.138/(3.50)	2.004/(50.90)	.071/(1.80)		
42819-5223	5	.201/(5.10)	2.004/(50.90)	.102/(2.60)		
42819-5233	5	.201/(5.10)	2.004/(50.90)	.134/(3.40)		
42819-5243	5	.327/(8.30)	2.004/(50.90)	.259/(6.58)		
42819-6213	6	.138/(3.50)	2.398/(60.90)	.071/(1.80)		
42819-6223	6	.201/(5.10)	2.398/(60.90)	.102/(2.60)		
42819-6233	6	.201/(5.10)	2.398/(60.90)	.134/(3.40)		
42819-6243	6	.327/(8.30)	2.398/(60.90)	.259/(6.58)		



- NOTES:**
- MATERIAL:
HOUSING MATERIAL: 30% GLASS-FILLED NYLON4/6, U.L.L. 94V-0, COLOR: BLACK.
TERMINAL MATERIAL: ALLOY 15L
 - FINISH: 2 = .000100/(.00254) MIN. *TIN OVER .000050/(.00127) MIN. NICKEL.
3 = .000030/(.00076) MIN. SELECT GOLD IN CONTACT AREA. .000100/(.00254) MIN. SELECT *TIN ON SOLDER TAILS OVER .000050/(.00127) MIN. NICKEL.
* THE PRIMARY SHIPPING CARTON WILL BE LABELED "COMPLIANT TO ROHS DIRECTIVE 2002/95/EC AND ELV ANNEX II OF DIRECTIVE 2000/53/EC". CARTONS WITHOUT THIS LABEL MAY CONTAIN PRODUCT WITH TIN-LEAD.
 - PRODUCT SPECIFICATION: PS-42815-001
 - PACKAGING INFORMATION: PK-42819-2375
 - PART MATES WITH MOLEX RECEPTACLE *42816-*** WITH T.P.A.
 - PART IS DESIGNED IN METRIC.
 - AN "X" IN FRONT OF THE ITEM NUMBER INDICATES THE PART IS NOT TOOLED.
 - THIS PART MEETS U.L.L. 1950 REQUIREMENTS FOR CREEPAGE AND CLEARANCE AT 600 VAC AND 840 VDC.
 - PARTS ARE NOT TO BE MATED OR UNMATED WHILE CIRCUITS ARE LIVE.
 - WHEN USING OVERALL TIN PLATED TERMINALS; FOR APPLICATIONS INVOLVING VIBRATION AND/OR THERMAL CYCLING, MOLEX STRONGLY RECOMMENDS THE USE OF NYE LUBRICANT (NYOGEL 760G) ON THE MATING SURFACES OF THE TERMINAL.
 - PARTS CONFORMS TO CLASS 'B' REQUIREMENTS OF COSMETIC SPECIFICATION PS-45499-002
- ⚠ BOARD CLIP HOLE MAY OR MAY NOT BE PLATED. REFER TO CHART FOR PLATED / UNPLATED CLIPS.



RECOMMENDED P.C. BOARD PLATED-THRU HOLE LAYOUT
(4 CKT. SHOWN FOR REF.)



ADD TERM. GAP DIM. E.C. NO. UCP2013-0293 DRAWN: AELHAG 2012/07/23 CHECKED: BEL 2012/07/23 APPROVED: MTH 2012/09/11 REV. DESCRIPTION	QUALITY SYMBOLS ▽=0 ▽=0	GENERAL TOLERANCES (UNLESS SPECIFIED) <table border="1"> <tr><th></th><th>mm</th><th>INCH</th></tr> <tr><td>4 PLACES</td><td>±.005</td><td>±.0005</td></tr> <tr><td>3 PLACES</td><td>±.008</td><td>±.0008</td></tr> <tr><td>2 PLACES</td><td>±.015</td><td>±.0015</td></tr> <tr><td>1 PLACE</td><td>±.030</td><td>±.0030</td></tr> </table> ANGULAR ±1/2°		mm	INCH	4 PLACES	±.005	±.0005	3 PLACES	±.008	±.0008	2 PLACES	±.015	±.0015	1 PLACE	±.030	±.0030	DIMENSION STYLE IN/MM SCALE 4:1 DESIGN UNITS METRIC THIRD ANGLE PROJECTION
		mm	INCH															
4 PLACES	±.005	±.0005																
3 PLACES	±.008	±.0008																
2 PLACES	±.015	±.0015																
1 PLACE	±.030	±.0030																
MATERIAL NO. SEE CHART DOCUMENT NO. SDA-42819-0002 SHEET NO. 1 OF 1	MOLEX INCORPORATED VERTICAL HEADER ASSEMBLY MINIFIT SR. SERIES																	