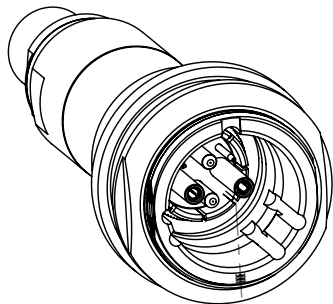
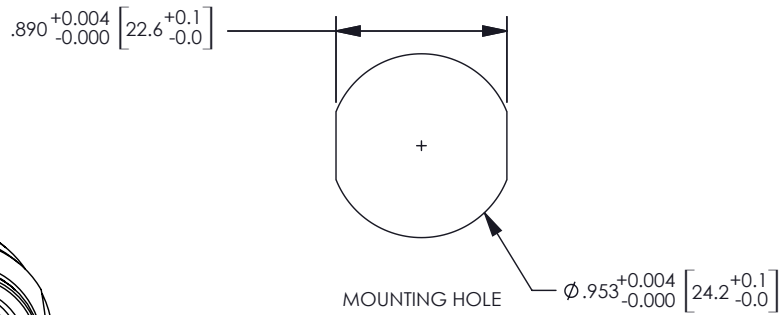
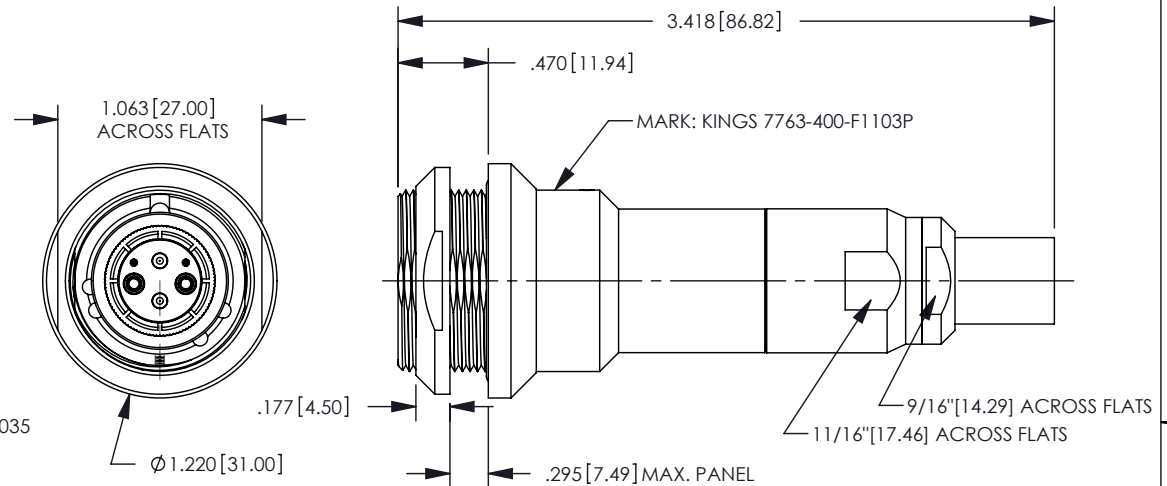


NOTES: UNLESS OTHERWISE SPECIFIED

1. INTERFACE COMPLIANT TO SMPTE 304 SPECIFICATION.
2. MATERIAL SPECIFICATIONS:
 CONTACTS: COPPER ALLOY
 O-RINGS AND STRAIN RELIEF: SILICONE RUBBER
 ALL PLASTIC PARTS: 20% GLASS FILLED POLYPROPYLENE
 ALL OTHER METAL PARTS: 303 STAINLESS STEEL PER ASTM A582
3. FINISH SPECIFICATIONS:
 STAINLESS STEEL PARTS: PASSIVATE
 CONTACTS: .000100 MIN GOLD PER ASTM B488 OVER
 .000080 MIN NICKEL PER AMS-QQN-290 (RoHS)
4. ELECTRICAL SPECIFICATIONS:
 LOW VOLTAGE CONTACTS: 42 - 60 VAC, 1 AMP
 AUX ELECTRICAL CONTACTS: 600 VAC, 10 AMP
5. ENVIRONMENTAL:
 OPERATING TEMPERATURE RATING: -40°C TO 75°C
 NON-OPERATING/STORAGE TEMPERATURE RATING: -40°C TO 85°C
 HUMIDITY: <95 RH (AT 40°C)
6. OPTICAL:
 WAVELENGTH: 1250nm - 1625nm
 INSERTION LOSS: 0.3dB TYPICAL, 0.5dB MAX
 RETURN LOSS: > -45dB, -50dB TYPICAL
7. REPLACEMENT KITS:
 CONTACT KIT: 7760-000-00702Z
8. CABLE PREPARATION AND STRIPPING PROCEDURE: CAP-TBD.
9. RED LDPE DUST CAP INCLUDED (NOT SHOWN)
10. CRIMP TOOLING:
 FOR FACTORY APPLICATION USE HAND TOOL KTH-1000 AND DIE KTH-2035
 FOR FIELD APPLICATION USE HAND TOOL KTH-5000 AND DIE KTH-5018
11. ELECTRICAL AND OPTICAL CONTACTS INCLUDED

REV	DESCRIPTION	BY DATE	APPD
01	PRELIMINARY PER ER30232	DRK 01/26/11	XXX



CATALOG P/N:7763-400-F1 103P

PER ASME Y14.5M-1994 UNLESS OTHERWISE SPECIFIED: DIMENSIONS ARE IN INCHES [MM] TOLERANCES: DECIMAL: .XX [X.X] ± .01 [0.3] .XXX [X.XX] ± .005 [0.13] .XXXX [X.XXX] ± .XXXX ANGLES: ± 2° SCALE: 1:1				by WINCHESTER Winchester Electronics Corporation 62 Barnes Industrial Road North Wallingford, Connecticut 06492					
CUSTOMER SALES DRAWING				THIRD ANGLE		TRI LOCK SMPTE PANEL MOUNT DD NUT, JACK, CABLE			
DRAWN	DATE	APPROVED	DATE	APPROVED	DATE	A SD7763-400-F1 103P	SHT 1 OF 1	REV 01	
DRK	01/26/11	PSM	02/01/11						
APPROVED	DATE	APPROVED	DATE						
JCF	02/01/11	XXX	XX/XX/XX						