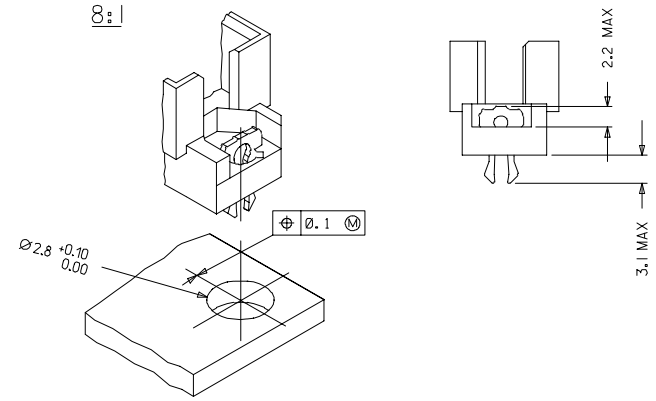
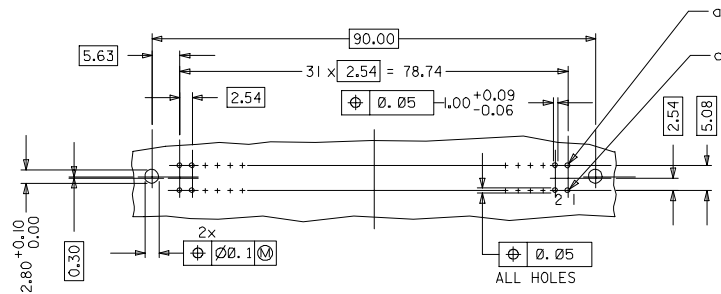


WITH MOUNTING CLIPS



- NOTES:
- 1) MATERIALS: THERMOPLASTIC POLYESTER, GLASS FILLED, UL94-V0
COLOUR: PEBBLE GREY RAL 7032
TERMINAL - PHOSPHOR BRONZE
MOUNTING CLIP: STEEL
 - 2) FINISH: TERMINAL:-
CONTACT AREA :
PERFORMANCE LEVEL 2: SELECTIVE GOLD (Au), THICKNESS = 0.6 MICROMETER
OVER NICKEL, THICKNESS = 1.25 MICROMETER MIN
PRESS-IN AREA :
Au FLASH
OVER NICKEL, THICKNESS = 1.25 MICROMETER MIN OVERALL
WIRE WRAP AREA :
PERFORMANCE LEVEL 2: SELECTIVE GOLD (Au), THICKNESS = 0.6 MICROMETER
OVER NICKEL, THICKNESS = 1.25 MICROMETER MIN
 - 3) MOUNTING CLIP:-
TIN (Sn), THICKNESS = 5-10 MICROMETER,
OVER NICKEL (Ni), THICKNESS = 2.5 MICROMETER
 - 4) FOR NON MOUNTING CLIP OPTION, CONNECTOR TO BE SECURED WITH
RIVETS: 2 TUBULAR RIVETS 2.5 x 0.3 ... DIN 7340
SCREWS: 2 CHEESEHEAD SCREWS M2.5 x ... DIN 84 AND 2 HEXAGONAL NUTS M2.5 DIN 934
 - 5) MATERIAL NUMBER, BATCH CODE, UL AND CSA MARKING
TO BE PRINTED ON THE CONNECTOR
 - 6) CUT FACE OF TIP WITHOUT PLATING PERMITTED
 - 7) PRODUCT SPECIFICATION PS : 36515-001

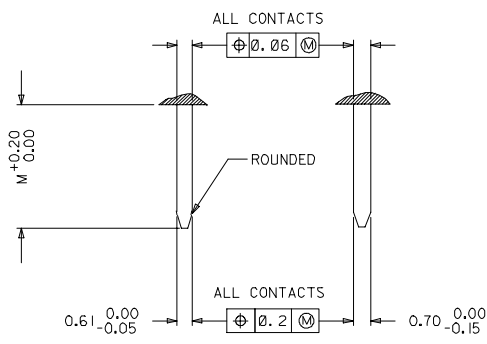
RECOMMENDED PCB LAYOUT
COMPONENT SIDE



EC No: P007-0044 DRAWN BY: DRINGSATTI/MARAD 2006/10/10 CHECKED BY: CHIKKOSUDHIR 2006/10/11 APPROVED BY: APPR/SSUDHIR 2006/10/10	QUALITY SYMBOLS	GENERAL TOLERANCES (UNLESS SPECIFIED)	DIMENSION STYLE	SCALE	DESIGN UNITS	THIRD ANGLE PROJECTION									
	▽=0 ▽=0	<table border="1"> <tr><th>mm</th><th>INCH</th></tr> <tr><td>4 PLACES ±</td><td>±</td></tr> <tr><td>3 PLACES ±</td><td>±</td></tr> <tr><td>2 PLACES ±</td><td>±</td></tr> <tr><td>1 PLACE ±</td><td>±</td></tr> </table>	mm	INCH	4 PLACES ±	±	3 PLACES ±	±	2 PLACES ±	±	1 PLACE ±	±	MM ONLY DRAWN BY: NS DATE: 2001/12/03 CHECKED BY: G J LOWE DATE: 2001/12/03 APPROVED BY: G J LOWE DATE: 2001/12/03	2:1	METRIC
mm	INCH														
4 PLACES ±	±														
3 PLACES ±	±														
2 PLACES ±	±														
1 PLACE ±	±														
DRAFT WHERE APPLICABLE MUST REMAIN WITHIN DIMENSIONS		MATERIAL NO. SEE CHART		DOCUMENT NO. SD-36515-028		SHEET NO. 1 OF 2									
THIS DRAWING CONTAINS INFORMATION THAT IS PROPRIETARY TO MOLEX INCORPORATED AND SHOULD NOT BE USED WITHOUT WRITTEN PERMISSION															

20	19	18	17	16	15	14	13	12	11	10	9	8	7	6	5	4	3	2	1
MATERIAL No.	PERF LEVEL	FINISH		CONTACT SEQUENCE/ROW	DIM "L" MM	MOUNTING CLIP	PREMATING CONTACT												
36515-0489	2	CONTACT AREA	TERMINATION AREA	1.2.3...32 a+c	13.25	NO	NO												
		Au + Ni	Au + Ni																

DETAILY DETAILX



PRE MATING CONTACTS	5.4
NORMAL CONTACTS	4.8
	M

RoHS COMPLIANT

EC No: 2007-0044 DRAWING: 2006/10/10 CHKD: 2006/10/11 APPR: 2006/10/10	QUALITY SYMBOLS	GENERAL TOLERANCES (UNLESS SPECIFIED)	DIMENSION STYLE	SCALE	DESIGN UNITS	THIRD ANGLE PROJECTION										
	$\nabla=0$ $\nabla=0$	<table border="1"> <tr><th>mm</th><th>INCH</th></tr> <tr><td>4 PLACES ±</td><td>±</td></tr> <tr><td>3 PLACES ±0.05</td><td>±</td></tr> <tr><td>2 PLACES ±0.1</td><td>±</td></tr> <tr><td>1 PLACE ±0.15</td><td>±</td></tr> </table>	mm	INCH	4 PLACES ±	±	3 PLACES ±0.05	±	2 PLACES ±0.1	±	1 PLACE ±0.15	±	MM ONLY	2:1	METRIC	THIRD ANGLE PROJECTION
	mm	INCH														
	4 PLACES ±	±														
3 PLACES ±0.05	±															
2 PLACES ±0.1	±															
1 PLACE ±0.15	±															
DESCRIPTION	DRAFT WHERE APPLICABLE MUST REMAIN WITHIN DIMENSIONS	<table border="1"> <tr><td>DRAWN BY</td><td>DATE</td></tr> <tr><td>NS</td><td>2001/12/03</td></tr> <tr><td>CHECKED BY</td><td>DATE</td></tr> <tr><td>GJLOWE</td><td>2001/12/03</td></tr> <tr><td>APPROVED BY</td><td>DATE</td></tr> <tr><td>GJLOWE</td><td>2001/12/03</td></tr> </table>	DRAWN BY	DATE	NS	2001/12/03	CHECKED BY	DATE	GJLOWE	2001/12/03	APPROVED BY	DATE	GJLOWE	2001/12/03	TITLE	ASSEMBLY, DIN 41612, PRESS-IN, WIRE WRAP
DRAWN BY	DATE															
NS	2001/12/03															
CHECKED BY	DATE															
GJLOWE	2001/12/03															
APPROVED BY	DATE															
GJLOWE	2001/12/03															
REV			MATERIAL NO.	DOCUMENT NO.	SHEET NO.											
C1			SEE CHART	SD-36515-028	2 OF 2											