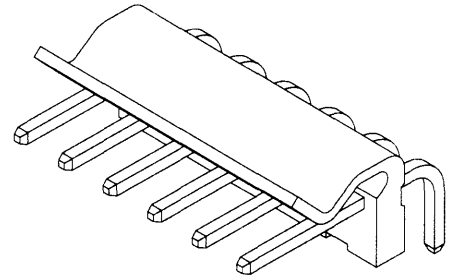


**molex® 5.08mm (.200") Pitch Header**

**5282-NA  
Right Angle  
Square Pin**



**D**  
3.00 to 7.92mm (.118 to .312") Pitch

**FEATURES AND SPECIFICATIONS**

**Features and Benefits**

- Sizes 2 to 7 circuits

**Reference Information**

Packaging: Bulk  
UL File No.: E29179  
CSA File No.: LR19980  
Mates With: 5197-N and 5258-N housings  
Designed In: Millimeters

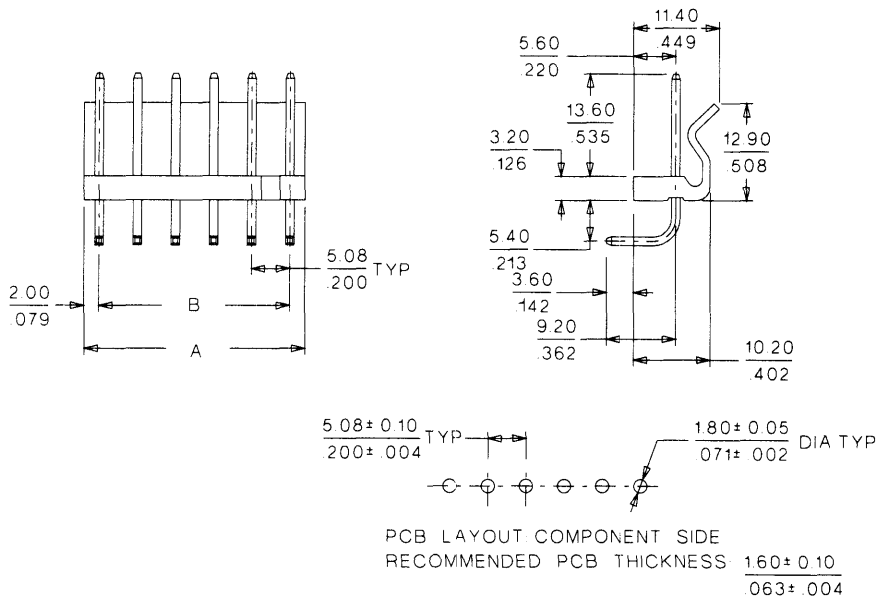
**Electrical**

Voltage: 250V  
Current: 7.0A  
Contact Resistance: 10mΩ max.  
Dielectric Withstanding Voltage: 1500V AC/1 min.  
Insulation Resistance: 1000 MΩ min.

**Physical**

Housing: 6/6 nylon, UL 94V-2  
Contact: Brass, 1.14mm (.045") square pins  
Plating: Tin  
Operating Temperature: -40 to +105°C

**CATALOG DRAWING (FOR REFERENCE ONLY)**



**ORDERING INFORMATION AND DIMENSIONS**

Circuits	Order No.	Dimension	
		A	B
2	10-33-1022	9.08 (.357)	5.08 (.200)
3	10-33-1032	14.16 (.557)	10.16 (.400)
4	10-33-1042	19.24 (.757)	15.24 (.600)
5	10-33-1052	24.32 (.957)	20.32 (.800)
6	10-33-1062	29.40 (1.157)	25.40 (1.000)
7	10-33-1072	34.48 (1.357)	30.48 (1.200)