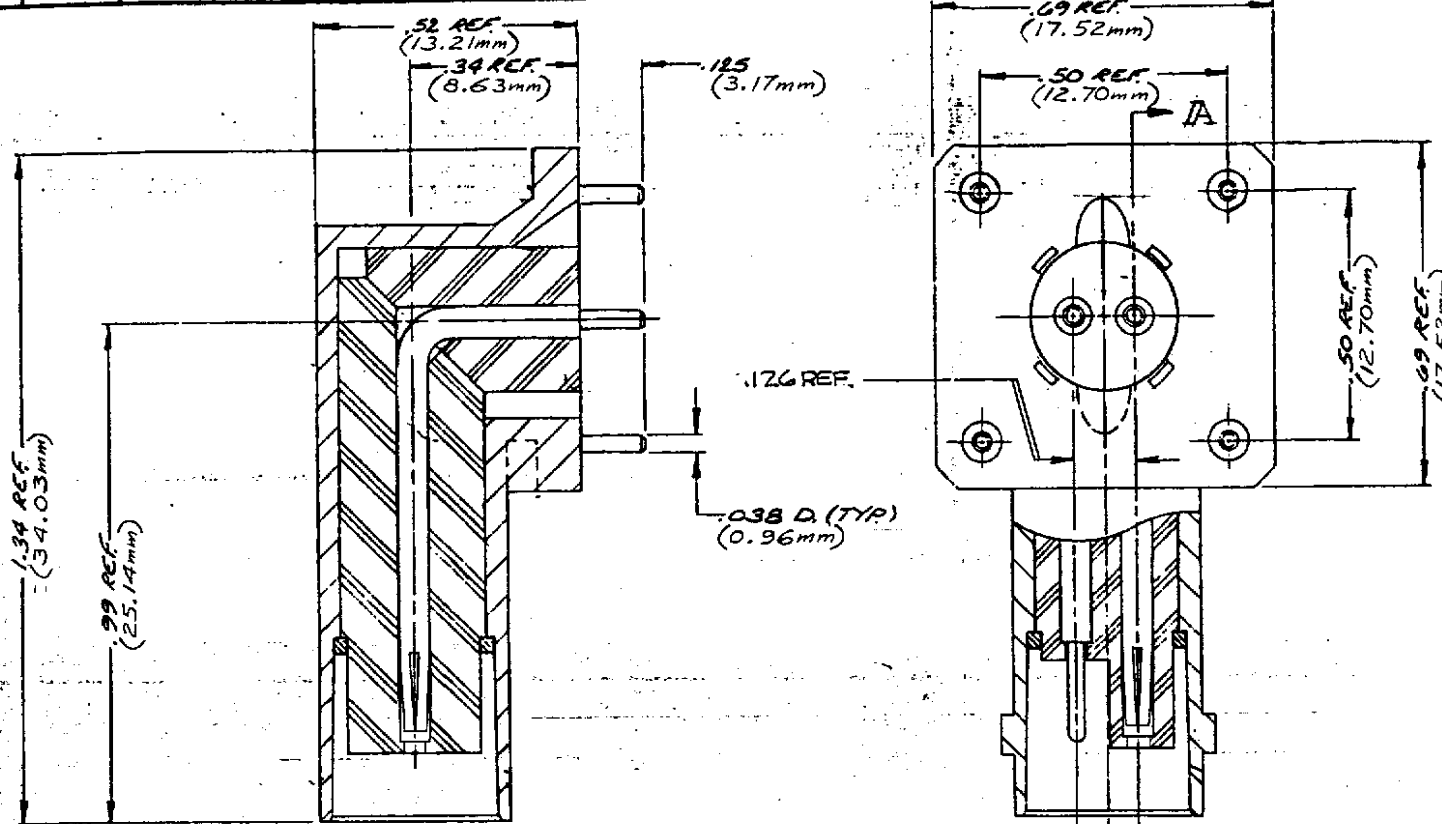


DASH NO.	M CODE	MADE FROM
----------	--------	-----------



SECTION A-A

NOTES:  
1. MARK PACKAGE: KINGS 2017-3-25.

UNLESS OTHERWISE SPECIFIED:

1. TOLERANCES: FRACTIONS & 2 PLACE DECIMALS ± .010
2. 3 PLACE DECIMALS ± .004
3. ANGLES ± 0°30'
4. T. I. R. CONCENTRICITY OF ANY 2 DIAMETERS MAY NOT EXCEED HALF THE SUM OF THEIR TOLERANCES

5. REMOVE ALL BURRS, BREAK SHARP EDGES .005 MAX.
6. NO FILLETS PERMITTED
7. SURFACE ROUGHNESS 63 MICRONS RMS MAX.
8. ALL DIMENSIONS PRIOR TO PLATING.
9. ALL PLATING IN ACCORDANCE WITH KER 10004

S-D

2017-3-25

REVISIONS	
ISSUE	CHANGES
0	ER 28080 CT 10 JUN 80
1	CN 28230 C SD 12 AUG 86
2	CN 28389 A ET 21 OCT 86
3	CN 31040 A M.Z.B. 3 AUG 89

S-D

SCALE 4:1

APPROX. SURFACE AREA

WHS: E-13302

USED ON

NO 150 SYSTEMS SUPP  
DWG NO. 27-00217-001  
REV. 3

THBNC PCB  
& RECEPTACLE

DRAWN: CT DATE 10 JUN 80

APPR: JT DATE 9 JUL 86

KINGS  
ELECTRONICS CO., INC.  
MELVILLE, NEW YORK 11767

2017-3-25

S-D