

General Description

The AO5600E/L uses advanced trench technology MOSFETs to provide excellent $R_{DS(ON)}$ and low gate charge. The complementary MOSFETs may be used in H-bridge, Inverters and other applications. AO5600E and AO5600EL are electrically identical.

-RoHS compliant

-AO5600EL is Halogen Free

Features

n-channel

$V_{DS} (V) = 20V, I_D = 0.6A (V_{GS}=4.5V)$

$R_{DS(ON)} < 0.65\Omega (V_{GS} = 4.5V)$

$R_{DS(ON)} < 0.75\Omega (V_{GS} = 2.5V)$

$R_{DS(ON)} < 0.95\Omega (V_{GS} = 1.8V)$

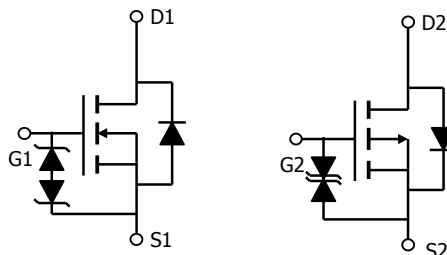
p-channel

$V_{DS} (V) = -20V, I_D = -0.5A (V_{GS}=-4.5V)$

$R_{DS(ON)} < 0.8\Omega (V_{GS} = -4.5V)$

$R_{DS(ON)} < 1.0\Omega (V_{GS} = -2.5V)$

$R_{DS(ON)} < 1.3\Omega (V_{GS} = -1.8V)$



Absolute Maximum Ratings $T_A=25^\circ\text{C}$ unless otherwise noted

Parameter	Symbol	Max n-channel	Max p-channel	Units
Drain-Source Voltage	V_{DS}	20	-20	V
Gate-Source Voltage	V_{GS}	± 8		V
Continuous Drain Current ^{B,H}	I_D	$T_C=25^\circ\text{C}$	0.6	-0.5
		$T_C=100^\circ\text{C}$	0.4	-0.38
Pulsed Drain Current ^B	I_{DM}	3	-1	A
Power Dissipation	P_D	$T_C=25^\circ\text{C}$	0.38	0.38
		$T_C=100^\circ\text{C}$	0.24	0.24
Junction and Storage Temperature Range	T_J, T_{STG}	-55 to 150		$^\circ\text{C}$

Thermal Characteristics: n-channel and p-channel

Parameter	Symbol	Device	Typ	Max	Units
Maximum Junction-to-Ambient ^A	$R_{\theta JA}$	n-ch	275	330	$^\circ\text{C}/\text{W}$
Maximum Junction-to-Ambient ^A		n-ch	360	450	$^\circ\text{C}/\text{W}$
Maximum Junction-to-Lead ^C	$R_{\theta JL}$	n-ch	300	350	$^\circ\text{C}/\text{W}$
Maximum Junction-to-Ambient ^A	$R_{\theta JA}$	p-ch	275	330	$^\circ\text{C}/\text{W}$
Maximum Junction-to-Ambient ^A		p-ch	360	450	$^\circ\text{C}/\text{W}$
Maximum Junction-to-Lead ^C	$R_{\theta JL}$	p-ch	300	350	$^\circ\text{C}/\text{W}$

N-channel Electrical Characteristics (T_J=25°C unless otherwise noted)

Symbol	Parameter	Conditions	Min	Typ	Max	Units
STATIC PARAMETERS						
BV _{DSS}	Drain-Source Breakdown Voltage	I _D =250μA, V _{GS} =0V	20			V
I _{DSS}	Zero Gate Voltage Drain Current	V _{DS} =20V, V _{GS} =0V T _J =55°C			1 5	μA
I _{GSS}	Gate-Body leakage current	V _{DS} =0V, V _{GS} =±4.5V			±1	μA
		V _{DS} =0V, V _{GS} =±8V			±100	μA
V _{GS(th)}	Gate Threshold Voltage	V _{DS} =V _{GS} I _D =250μA	0.45	0.6	1	V
I _{D(ON)}	On state drain current	V _{GS} =4.5V, V _{DS} =5V	3			A
R _{DS(ON)}	Static Drain-Source On-Resistance	V _{GS} =4.5V, I _D =0.5A T _J =125°C		0.54 0.81	0.65 1	Ω
		V _{GS} =2.5V, I _D =0.5A		0.63	0.75	Ω
		V _{GS} =1.8V, I _D =0.3A		0.73	0.95	Ω
g _{FS}	Forward Transconductance	V _{DS} =5V, I _D =0.5A		1.5		S
V _{SD}	Diode Forward Voltage	I _S =0.1A, V _{GS} =0V		0.65	1	V
I _S	Maximum Body-Diode Continuous Current				0.4	A
DYNAMIC PARAMETERS						
C _{iss}	Input Capacitance	V _{GS} =0V, V _{DS} =10V, f=1MHz		35	45	pF
C _{oss}	Output Capacitance		8		pF	
C _{rss}	Reverse Transfer Capacitance		6		pF	
SWITCHING PARAMETERS						
Q _g	Total Gate Charge	V _{GS} =4.5V, V _{DS} =10V, I _D =0.5A		0.63	1	nC
Q _{gs}	Gate Source Charge		0.08		nC	
Q _{gd}	Gate Drain Charge		0.16		nC	
t _{D(on)}	Turn-On DelayTime	V _{GS} =5V, V _{DS} =10V, R _L =50Ω, R _{GEN} =3Ω		4.5		ns
t _r	Turn-On Rise Time		3.3		ns	
t _{D(off)}	Turn-Off DelayTime		70		ns	
t _f	Turn-Off Fall Time		35		ns	
t _{rr}	Body Diode Reverse Recovery Time	I _F =0.5A, dI/dt=100A/μs		8	10	ns
Q _{rr}	Body Diode Reverse Recovery Charge	I _F =0.5A, dI/dt=100A/μs		2		nC

A: The value of R_{θJA} is measured with the device mounted on 1in² FR-4 board with 2oz. Copper, in a still air environment with T_A=25°C. The value in any given application depends on the user's specific board design. The current rating is based on the t ≤ 10s thermal resistance rating.

B: Repetitive rating, pulse width limited by junction temperature.

C: The R_{θJA} is the sum of the thermal impedance from junction to lead R_{θJL} and lead to ambient.

D: The static characteristics in Figures 1 to 6,12,14 are obtained using <300 μs pulses, duty cycle 0.5% max.

E: These tests are performed with the device mounted on 1 in² FR-4 board with 2oz. Copper, in a still air environment with T_A=25°C. The SOA curve provides a single pulse rating.

F: The maximum current rating is limited by bond-wires

Rev5: Oct 2008

THIS PRODUCT HAS BEEN DESIGNED AND QUALIFIED FOR THE CONSUMER MARKET. APPLICATIONS OR USES AS CRITICAL COMPONENTS IN LIFE SUPPORT DEVICES OR SYSTEMS ARE NOT AUTHORIZED. AOS DOES NOT ASSUME ANY LIABILITY ARISING OUT OF SUCH APPLICATIONS OR USES OF ITS PRODUCTS. AOS RESERVES THE RIGHT TO IMPROVE PRODUCT DESIGN, FUNCTIONS AND RELIABILITY WITHOUT NOTICE.

N-Channel TYPICAL ELECTRICAL AND THERMAL CHARACTERISTICS

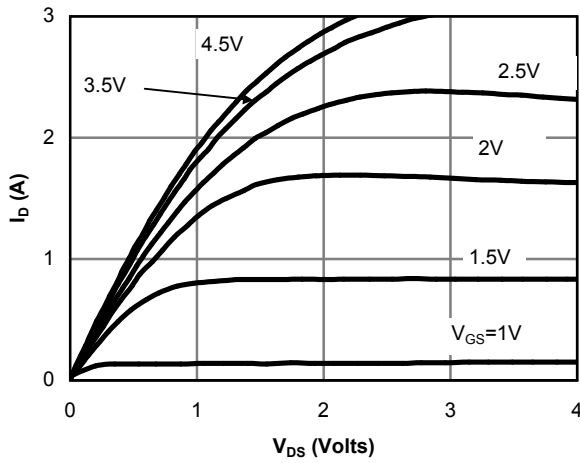


Figure 1: On-Region Characteristics

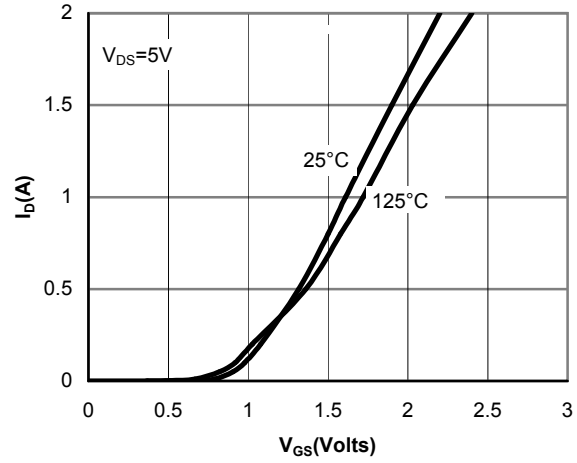


Figure 2: Transfer Characteristics

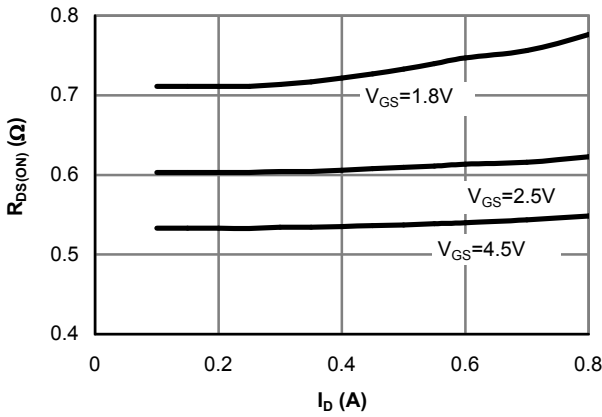


Figure 3: On-Resistance vs. Drain Current and Gate Voltage

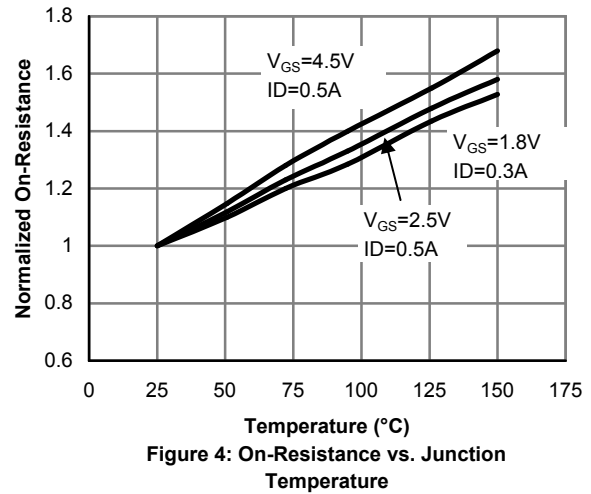


Figure 4: On-Resistance vs. Junction Temperature

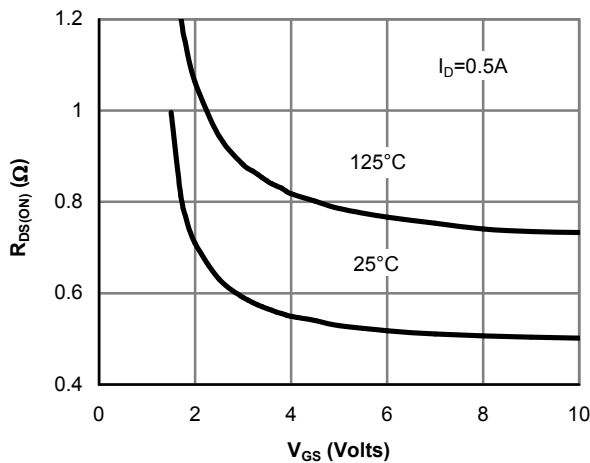


Figure 5: On-Resistance vs. Gate-Source Voltage

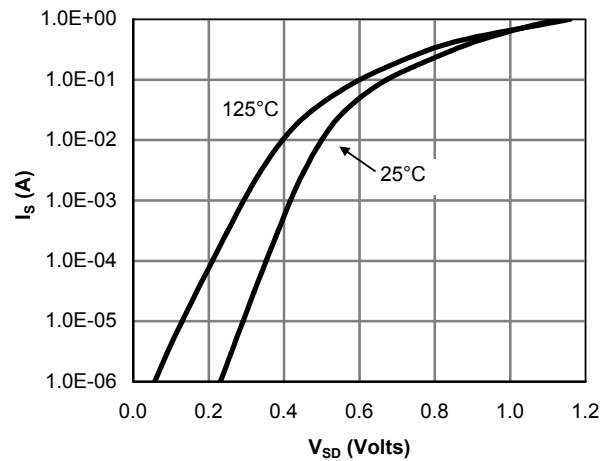


Figure 6: Body-Diode Characteristics

N-Channel TYPICAL ELECTRICAL AND THERMAL CHARACTERISTICS

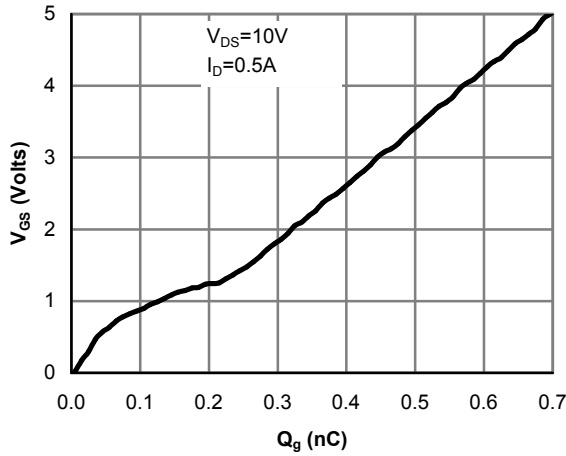


Figure 7: Gate-Charge Characteristics

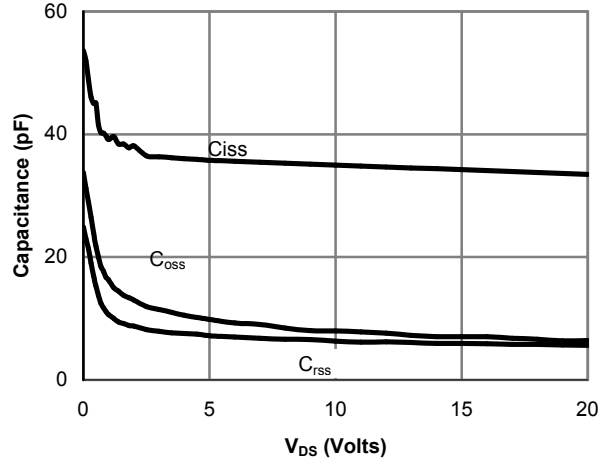


Figure 8: Capacitance Characteristics

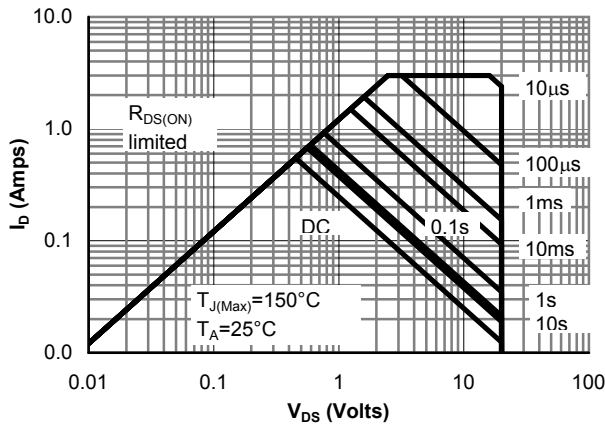


Figure 9: Maximum Forward Biased Safe Operating Area (Note E)

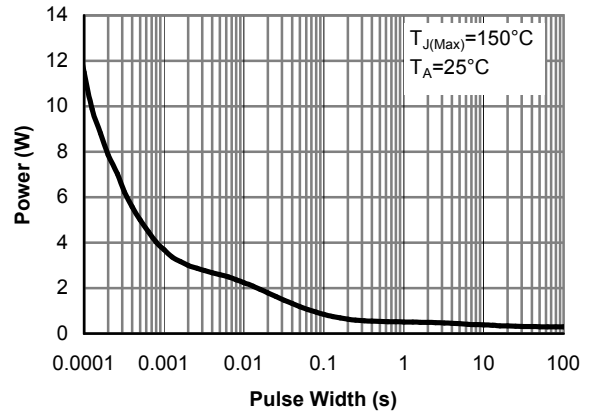


Figure 10: Single Pulse Power Rating Junction-to-Ambient (Note E)

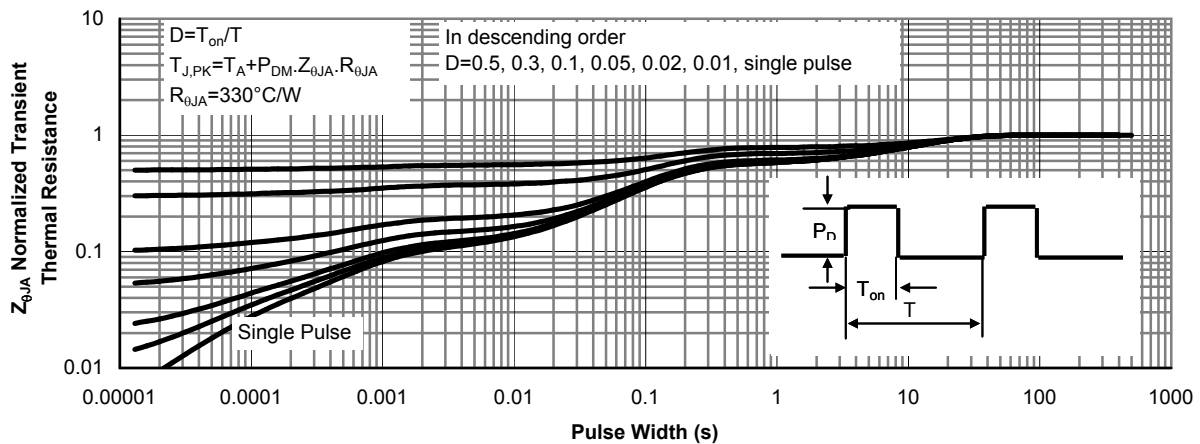


Figure 11: Normalized Maximum Transient Thermal Impedance

P-Channel Electrical Characteristics (T_J=25°C unless otherwise noted)

Symbol	Parameter	Conditions	Min	Typ	Max	Units
STATIC PARAMETERS						
BV _{DSS}	Drain-Source Breakdown Voltage	I _D =-250μA, V _{GS} =0V	-20			V
I _{DSS}	Zero Gate Voltage Drain Current	V _{DS} =-20V, V _{GS} =0V T _J =55°C			1 5	μA
I _{GSS}	Gate-Body leakage current	V _{DS} =0V, V _{GS} =±4.5V			±1	μA
		V _{DS} =0V, V _{GS} =±8V			±10	μA
V _{GS(th)}	Gate Threshold Voltage	V _{DS} =V _{GS} I _D =-250μA	-1	-0.6	-0.45	
I _{D(ON)}	On state drain current	V _{GS} =-4.5V, V _{DS} =-5V	-1			A
R _{DS(ON)}	Static Drain-Source On-Resistance	V _{GS} =-4.5V, I _D =-0.5A T _J =125°C		0.65 0.9	0.8 1.1	Ω
		V _{GS} =-2.5V, I _D =-0.5A		0.85	1	Ω
		V _{GS} =-1.8V, I _D =-0.3A		1.05	1.3	Ω
g _{FS}	Forward Transconductance	V _{DS} =-5V, I _D =-0.51A		0.9		S
V _{SD}	Diode Forward Voltage	I _S =-0.1A, V _{GS} =0V		-0.66	-1	V
I _S	Maximum Body-Diode Continuous Current				-0.5	A
DYNAMIC PARAMETERS						
C _{iss}	Input Capacitance	V _{GS} =0V, V _{DS} =-10V, f=1MHz		72	100	pF
C _{oss}	Output Capacitance			17		pF
C _{rss}	Reverse Transfer Capacitance			9		pF
SWITCHING PARAMETERS						
t _{D(on)}	Turn-On DelayTime	V _{GS} =-4.5V, V _{DS} =-10V, R _L =50Ω, R _{GEN} =3Ω		60.5		ns
t _r	Turn-On Rise Time			150		ns
t _{D(off)}	Turn-Off DelayTime			612		ns
t _f	Turn-Off Fall Time			436		ns
t _{rr}	Body Diode Reverse Recovery Time	I _F =-0.5A, dI/dt=100A/μs		27	35	ns
Q _{rr}	Body Diode Reverse Recovery Charge	I _F =-0.5A, dI/dt=100A/μs		8.3		nC

A: The value of R_{θJA} is measured with the device mounted on 1 in² FR-4 board with 2oz. Copper, in a still air environment with T_A=25°C. The value in any given application depends on the user's specific board design. The current rating is based on the t_θ ≤ 10s thermal resistance rating.

B: Repetitive rating, pulse width limited by junction temperature.

C: The R_{θJA} is the sum of the thermal impedance from junction to lead R_{θJL} and lead to ambient.

D: The static characteristics in Figures 1 to 6,12,14 are obtained using <300 μs pulses, duty cycle 0.5% max.

E: These tests are performed with the device mounted on 1 in² FR-4 board with 2oz. Copper, in a still air environment with T_A=25°C. The SOA curve provides a single pulse rating.

F: The maximum current rating is limited by bond-wires

Rev5: Oct 2008

THIS PRODUCT HAS BEEN DESIGNED AND QUALIFIED FOR THE CONSUMER MARKET. APPLICATIONS OR USES AS CRITICAL COMPONENTS IN LIFE SUPPORT DEVICES OR SYSTEMS ARE NOT AUTHORIZED. AOS DOES NOT ASSUME ANY LIABILITY ARISING OUT OF SUCH APPLICATIONS OR USES OF ITS PRODUCTS. AOS RESERVES THE RIGHT TO IMPROVE PRODUCT DESIGN, FUNCTIONS AND RELIABILITY WITHOUT NOTICE.

P-Channel TYPICAL ELECTRICAL AND THERMAL CHARACTERISTICS

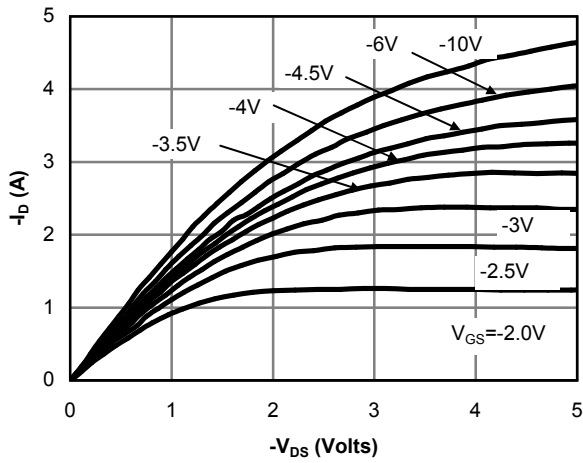


Figure 1: On-Region Characteristics

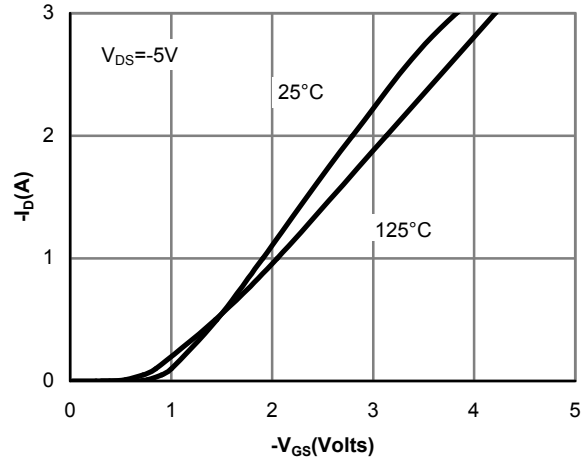


Figure 2: Transfer Characteristics

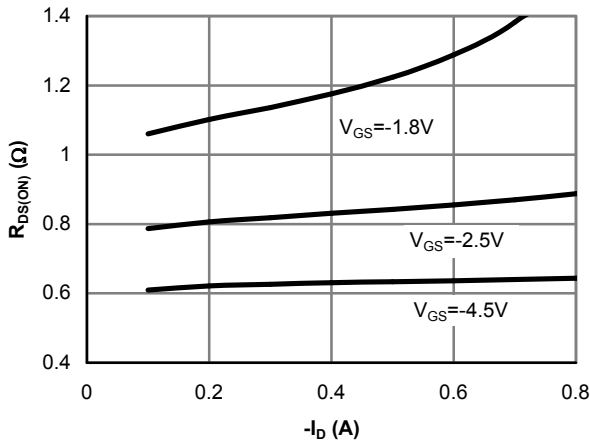


Figure 3: On-Resistance vs. Drain Current and Gate Voltage

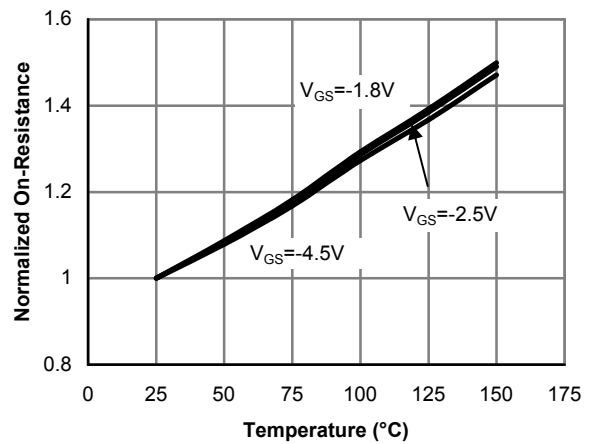


Figure 4: On-Resistance vs. Junction Temperature

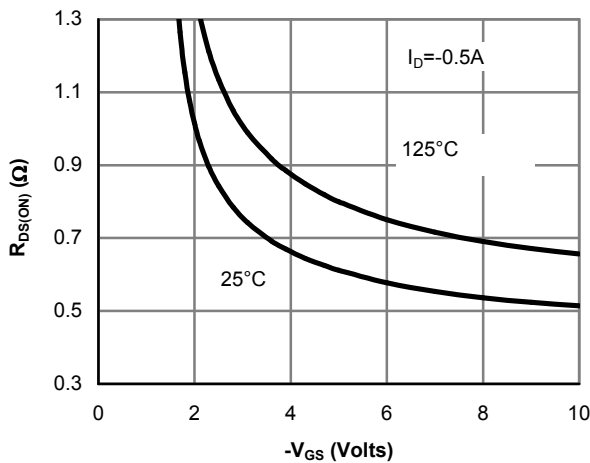


Figure 5: On-Resistance vs. Gate-Source Voltage

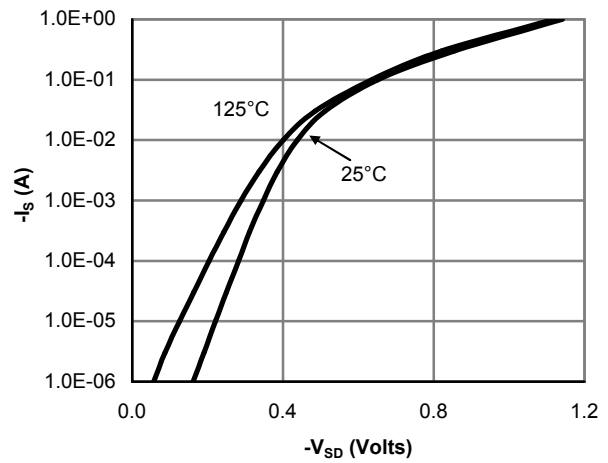


Figure 6: Body-Diode Characteristics

P-Channel TYPICAL ELECTRICAL AND THERMAL CHARACTERISTICS

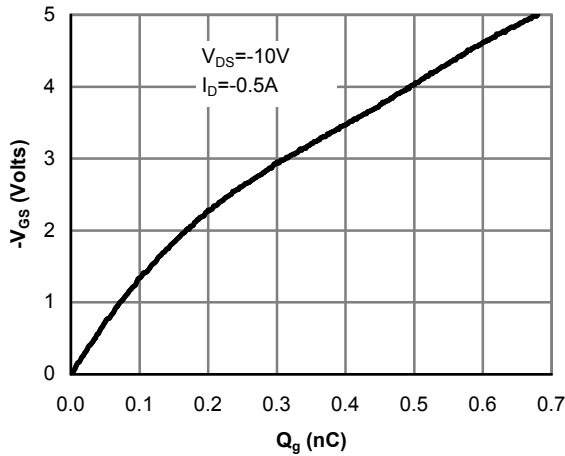


Figure 7: Gate-Charge Characteristics

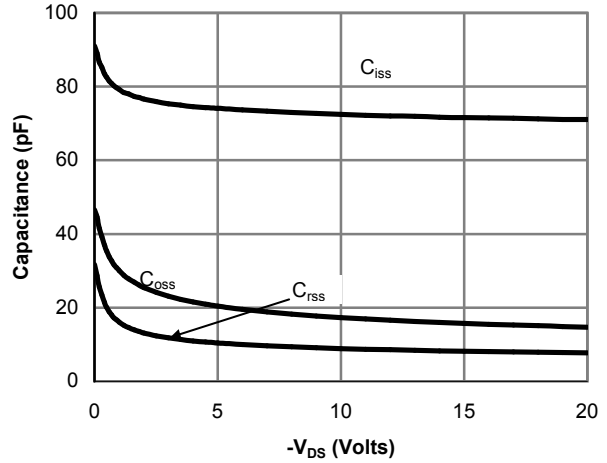


Figure 8: Capacitance Characteristics

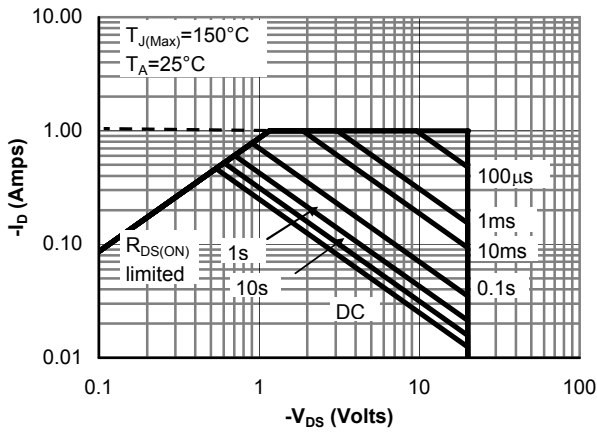


Figure 9: Maximum Forward Biased Safe Operating Area (Note E)

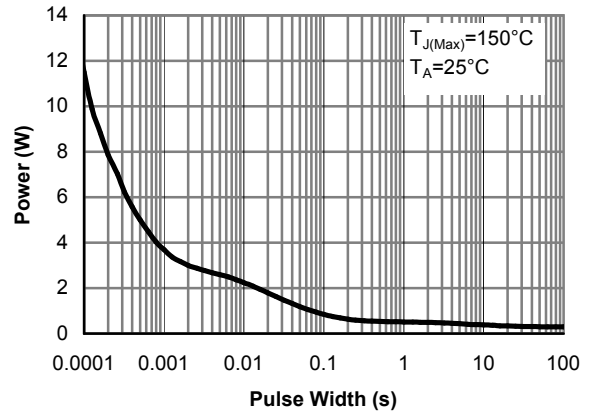


Figure 10: Single Pulse Power Rating Junction-to-Ambient (Note E)

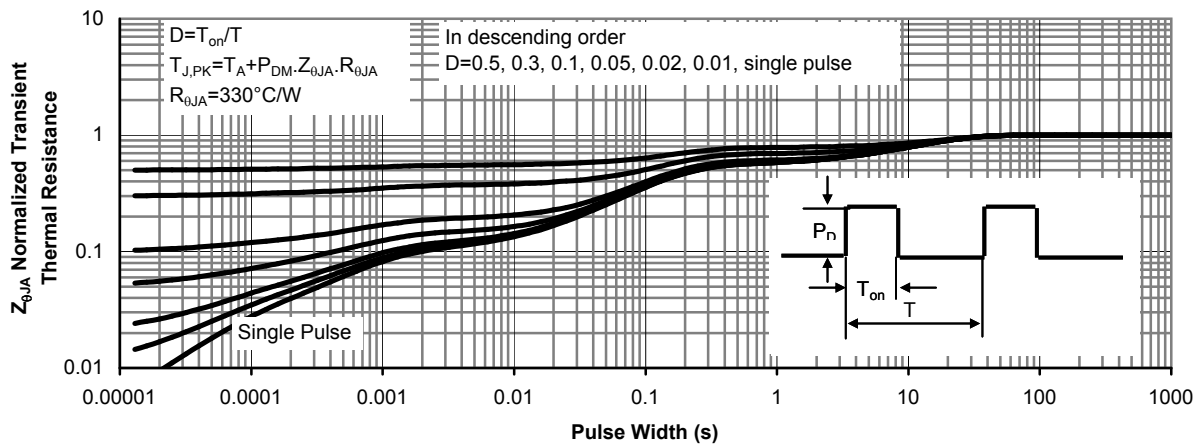
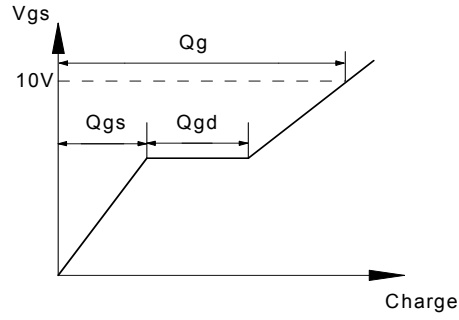
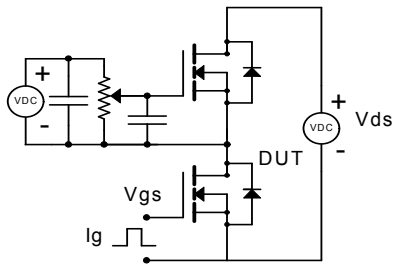
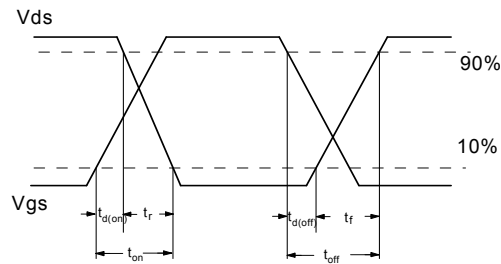
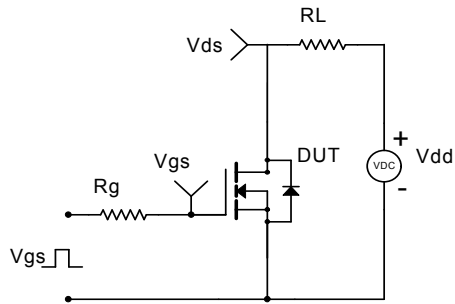


Figure 11: Normalized Maximum Transient Thermal Impedance

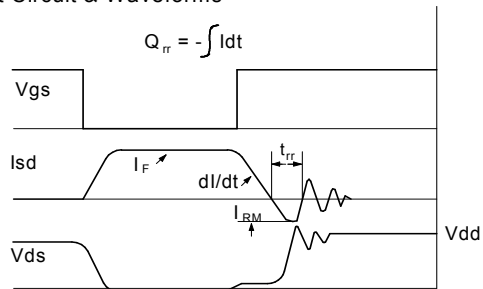
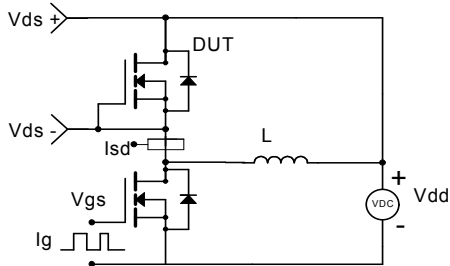
Gate Charge Test Circuit & Waveform



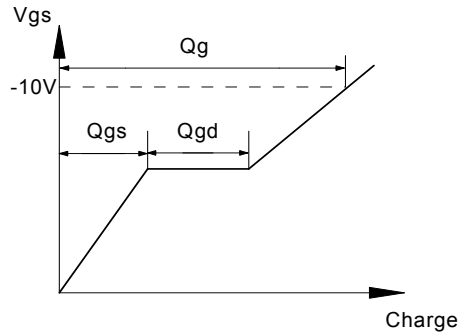
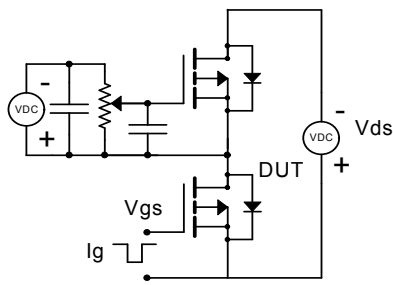
Resistive Switching Test Circuit & Waveforms



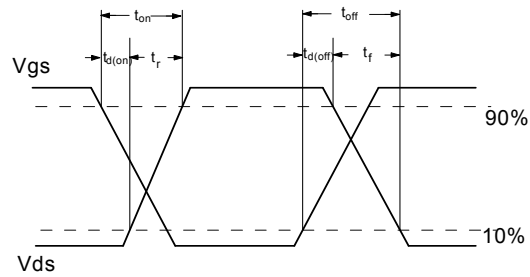
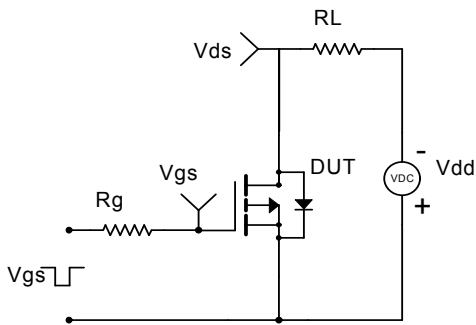
Diode Recovery Test Circuit & Waveforms



Gate Charge Test Circuit & Waveform



Resistive Switching Test Circuit & Waveforms



Diode Recovery Test Circuit & Waveforms

