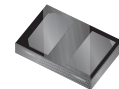


## CFSH01-30 30V, 100mA Schottky Diode in the ultra miniature SOD-882L package

SOD-882L



Top View



Bottom View

Central Semiconductor's CFSH01-30 is a Schottky diode designed for applications where forward voltage and reverse leakage current are equally important design elements. The CFSH01-30 offers very low total conduction losses in an ultra small package. The CFSH01-30's Tiny Leadless Package™ (TLP™) offers both a minimal board footprint and an extremely low package profile making it the ideal solution for size constrained energy efficient applications.

### Features:

- Current ( $I_O = 100\text{mA}$ )
- Low forward voltage drop ( $V_F = 0.41\text{V} @ 10\text{mA}$ )
- Low leakage current ( $I_R = 30\text{nA} @ 10\text{V}$ )

### Applications:

- DC-DC conversion
- Voltage clamping
- Circuit protection
- Battery power management

### Benefits:

- Energy efficiency
- Space saving low profile package

### Package Size and Comparison:

The SOD-882L utilizes **81%** less board space than the SOD-323



SOD-882L

SOD-323

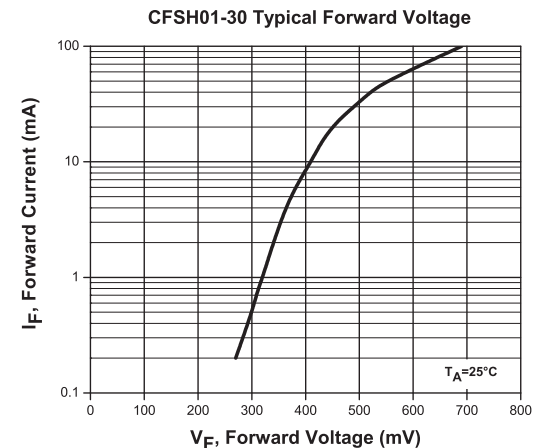
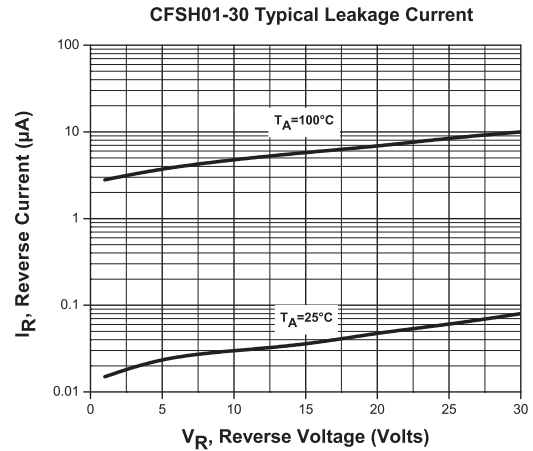
The SOD-882L has a **60%** lower profile than the SOD-323



SOD-882L

SOD-323

### Typical Electrical Characteristics



### Samples

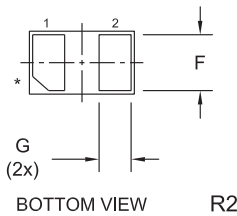
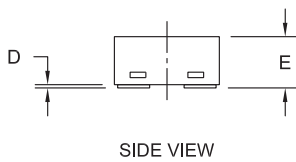
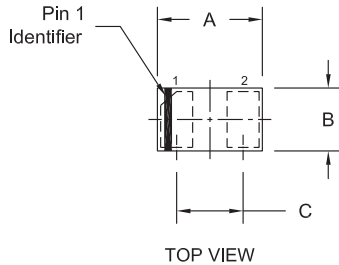


To order samples of this device visit:  
[www.centalsemi.com/info/CFSH01-30](http://www.centalsemi.com/info/CFSH01-30)

Electrical Characteristics ( $T_A = 25^\circ\text{C}$ unless otherwise noted)								Thermal Characteristics				
$V_{RRM}$	$I_O$	$V_F$		@ $I_F$	$I_R$		@ $V_R$	$C_T$	$P_D$	$T_J$	$T_{stg}$	$\Theta_{JA}$
(V) MAX	(mA) MAX	(V) TYP	(V) MAX		(nA) TYP	(nA) MAX	(V)	(pF) TYP	(mW) MAX	( $^\circ\text{C}$ ) MAX	( $^\circ\text{C}$ ) MAX	( $^\circ\text{C}/\text{W}$ ) MAX
30	100	0.41	0.46	10mA	30	300	10	7.0	100	-65 to +125	-65 to +150	1,000

## Mechanical Drawing - SOD-882L

CASE DRAWING: SOD-882L



\* Pin 1 chamfer may appear on any corner.

SYMBOL	DIMENSIONS			
	INCHES		MILLIMETERS	
	MIN	MAX	MIN	MAX
A	0.037	0.041	0.95	1.05
B	0.022	0.026	0.55	0.65
C	0.026		0.65	
D	0.000	0.002	0.00	0.05
E	0.012	0.016	0.30	0.40
F	0.018	0.022	0.45	0.55
G	0.008	0.012	0.20	0.30

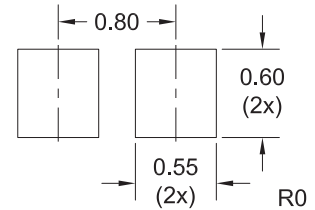
SOD-882L (REV:R2)

### Lead Code:

- 1) Cathode
- 2) Anode

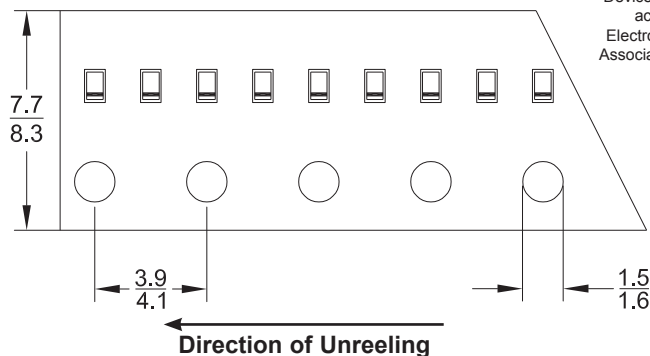
### Marking Code: T

## Mounting Pad Geometry (Dimensions in mm)



## Tape Dimensions and Orientation (Dimensions in mm)

Tape Width: 8mm

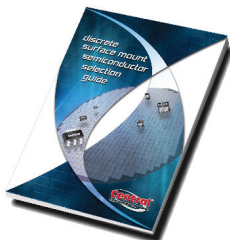


\* Devices are taped in accordance with Electronic Industries Association Standard EIA-481-1-A

## Packaging Base / Ordering Information

Reel Size	Quantity	Central Item No.
7"	8,000 pcs.	CFSH01-30 TR

## Literature



New  
SMD  
SELECTION  
GUIDE

Order your selection guide today.  
Visit: [web.centrasemi.com/search/sample.php](http://web.centrasemi.com/search/sample.php)

## Reel Packing Information

Reel Size	Reels per Box (Maximum)	Parts per Box (Maximum)	Box Dimensions		Shipping Weight (Max.)	
			INCH	CM	LB	KG
7"	9	72,000	9x9x5	23x23x13	3	2
	18	144,000	9x9x9	23x23x23	6	3
	40	320,000	21x9x9	53x23x23	13	6
	108	864,000	27x9x17	69x23x43	34	16

Sample devices available upon request. To order samples of this device visit: [www.centrasemi.com/info/CFSH01-30](http://www.centrasemi.com/info/CFSH01-30)



Innovative Discrete  
Semiconductors

For further information contact:  
Sales at Central Semiconductor Corp.  
(631) 435-1110 or visit:  
[www.centrasemi.com](http://www.centrasemi.com)