



Anaren Integrated Radio Evaluation Module Series

A1101R09A-EM1

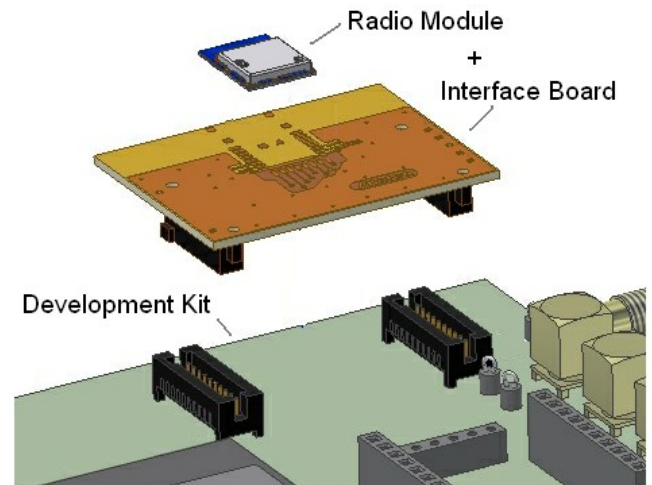
The A1101R09A-EM1 is a high-performance, interface board with an FCC-certified A1101R09A integrated antenna radio module mounted for quick connection to the Texas Instruments CC1101DK Development Kit.

Product Overview

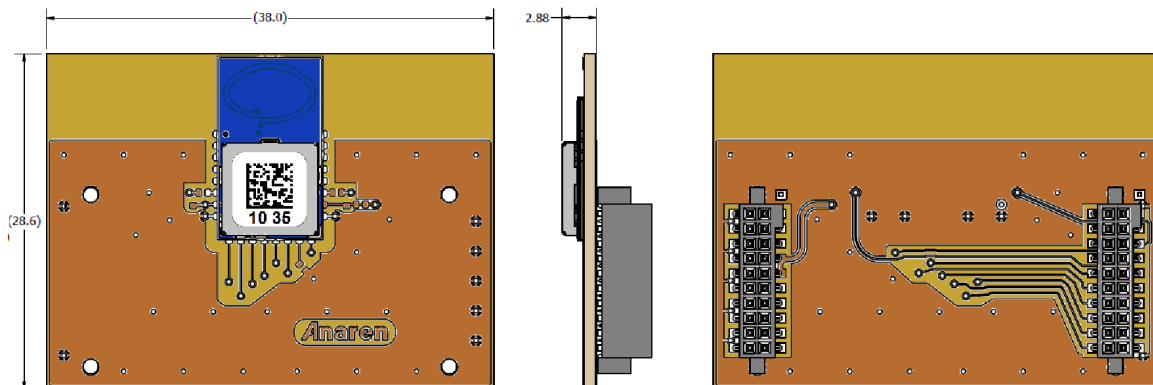
The A1101R09A-EM1 is an evaluation module with an Anaren A1101R09A radio module in the industry's smallest package (9 x 16 x 2.5mm) mounted on it. This evaluation module is designed specifically for compatibility with SmartRF[®]04, SmartRF[®]05 and MAVRK evaluation boards. Each Anaren A1101R09A module is FCC-certified and incorporates the Texas Instruments CC1101 transceiver chip.

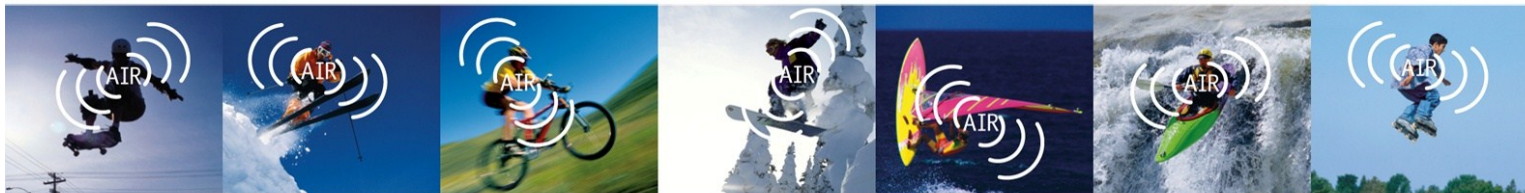
As a stand-alone module for your final design implementation, Anaren's A1101R09A has an LGA pad footprint with an integrated antenna, this module is designed to effortlessly integrate into a wide range of applications, including: industrial control, building automation, low-power wireless sensor networks, lighting control, and automated meter reading.

The A1101R09A has an RoHS-compliant ENIG finish and is packaged on tape & reel or in matrix tray for high-volume automated manufacturing.



Layout

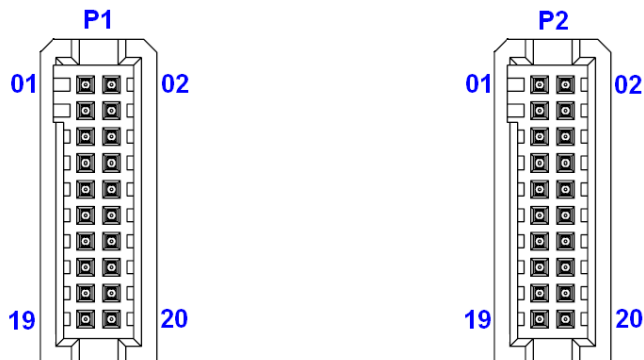




Anaren Integrated Radio

Pin Diagram

Development Kit Connectors



Connector P1

Pin 1	GND
Pin 2	NC
Pin 3	NC
Pin 4	NC
Pin 5	NC
Pin 6	NC
Pin 7	NC
Pin 8	NC
Pin 9	NC
Pin 10	GDO0/ATEST
Pin 11	NC
Pin 12	GDO2 (Debug)
Pin 13	NC
Pin 14	CSn
Pin 15	NC
Pin 16	SCLK
Pin 17	NC
Pin 18	SI
Pin 19	GND
Pin 20	SO/GDO1

Connector P2

Pin 1	NC
Pin 2	GND
Pin 3	NC
Pin 4	GND
Pin 5	NC
Pin 6	GND
Pin 7	VDD
Pin 8	GND
Pin 9	VDD
Pin 10	GND
Pin 11	NC
Pin 12	GND
Pin 13	NC
Pin 14	GND
Pin 15	NC
Pin 16	GND
Pin 17	NC
Pin 18	NC
Pin 19	NC
Pin 20	DD_DIR

⊘ This product is not to be used in any implantable medical device or external medical device intended to regulate or monitor biological functions, including but not limited to devices such as pacemakers, defibrillators, cardiac resynchronization devices, pressure sensors, biochemical stimulators and neurostimulators. ANAREN MAKES NO WARRANTY OF FITNESS OR MERCHANTABILITY OF THIS PRODUCT FOR ANY USE OF THIS TYPE. Anaren shall not be responsible for any consequential damages arising from the sale or use of this product for any use of this type. The ultimate user of the product assumes all risk of personal injury or death arising from a prohibited use.

Nomenclature

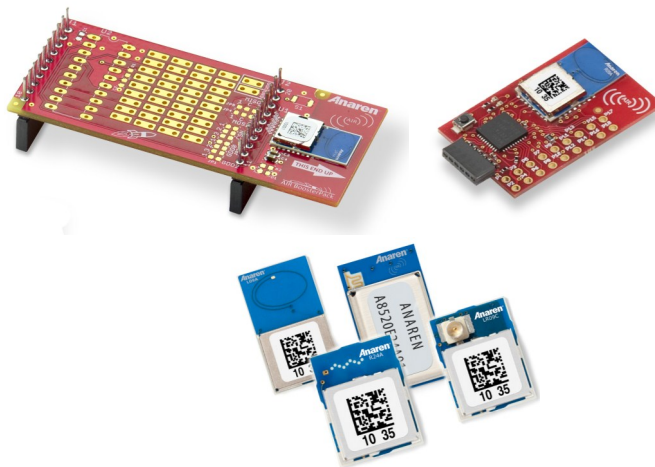
A1101R09A-EM1

1 2 3 4 5

A	(Anaren)
1	Chip series (CC1101, CC110L, CC2500)
2	Function (R = radio only)
3	Frequency band (x100MHz)
4	Form factor (A = Internal Antenna, C = Connector)
5	Module Type (EM1 = Eval Module, EZ4x = EZ-430 Module, LPF = BoosterPack)

To view the entire available family of AIR Modules & Development options, please visit our website at:

<http://www.anaren.com/air>



PLEASE NOTE: Additional information on the Texas Instruments CC1101 Development Kit can be found in the company's latest datasheet release at <http://www.ti.com>



Caution! ESD sensitive device. Precautions should be used when handling the device in order to prevent permanent damage.

