

NOTES: UNLESS OTHERWISE SPECIFIED

1. INTERFACE COMPLIANT TO SMPTE 304 SPECIFICATION.

2. MATERIAL SPECIFICATIONS:

CONTACTS: COPPER ALLOY
 ALIGNMENT PINS: BRASS PER ASTM B16
 CRIMP SLEEVE: PHOS. BRONZE
 O-RINGS AND STRAIN RELIEF: SILICONE RUBBER
 ALL PLASTIC PARTS: 20% GLASS FILLED POLYPROPYLENE
 ALL OTHER METAL PARTS: 303 STAINLESS STEEL PER ASTM A582

3. FINISH SPECIFICATIONS:

STAINLESS STEEL PARTS: PASSIVATE
 CONTACTS: .000100 MIN GOLD PER ASTM B488 OVER
 .000080 MIN NICKEL PER AMS-QQN-290 (RoHS)
 CRIMP SLEEVE: .000100 MIN NICKEL PER AMS-QQ-N-290 OVER
 COPPER FLASH PER ASTM B734 (RoHS)

4. ELECTRICAL SPECIFICATIONS:

LOW VOLTAGE CONTACTS: 42 - 60 VAC, 1 AMP
 AUX ELECTRICAL CONTACTS: 600 VAC, 10 AMP

5. ENVIRONMENTAL:

OPERATING TEMPERATURE RATING: -40°C TO 75°C
 NON-OPERATING/STORAGE TEMPERATURE RATING: -40°C TO 85°C
 HUMIDITY: <95 RH (AT 40°C)

6. OPTICAL:

WAVELENGTH: 1100nm - 1350nm
 INSERTION LOSS: 0.3dB TYPICAL, 0.5dB MAX
 RETURN LOSS: > -45dB, -50dB TYPICAL

7. REPLACEMENT KITS:

CONTACT KIT: 7760-000-00702Z

8. CABLE PREPARATION AND STRIPPING PROCEDURE: CAP-E05.

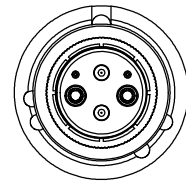
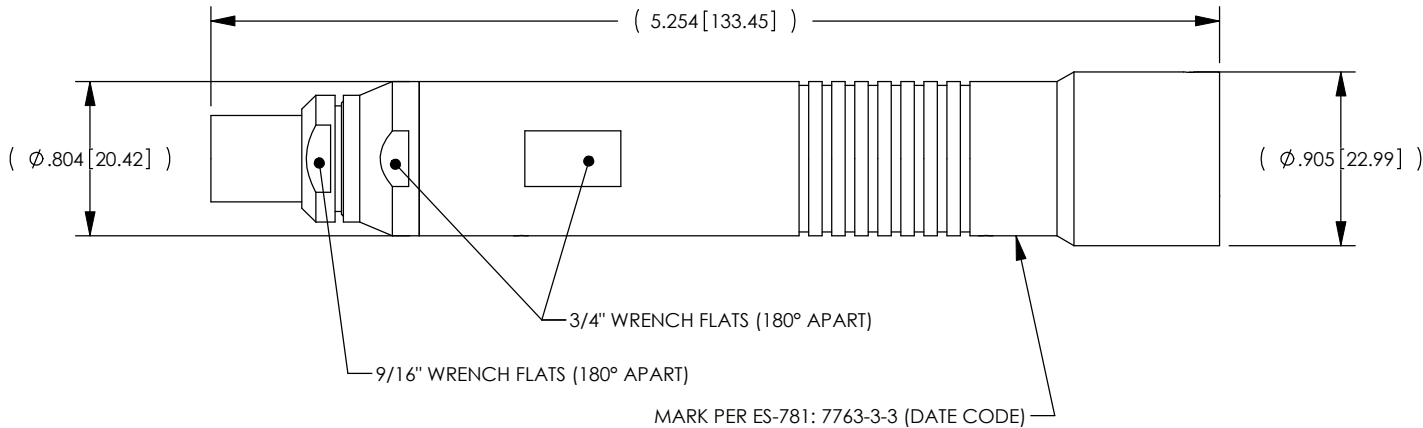
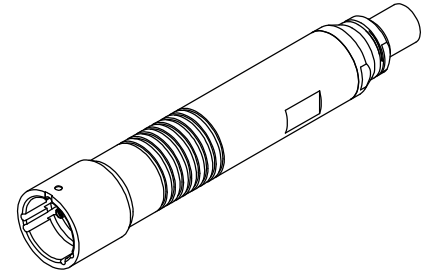
9. OPTIONAL ENVIRONMENTAL BOOT 7760-000-00705Z SOLD SEPARATELY.

10. RED LDPE DUST CAP INCLUDED (NOT SHOWN)

11. CRIMP TOOLING:

FOR FACTORY APPLICATION USE HAND TOOL KTH-1000 AND DIE KTH-2035
 FOR FIELD APPLICATION USE HAND TOOL KTH-5000 AND DIE KTH-5018

REV	DESCRIPTION	BY DATE	APPD
D	REVISED PER ER30231	JCF 01/06/10	XX

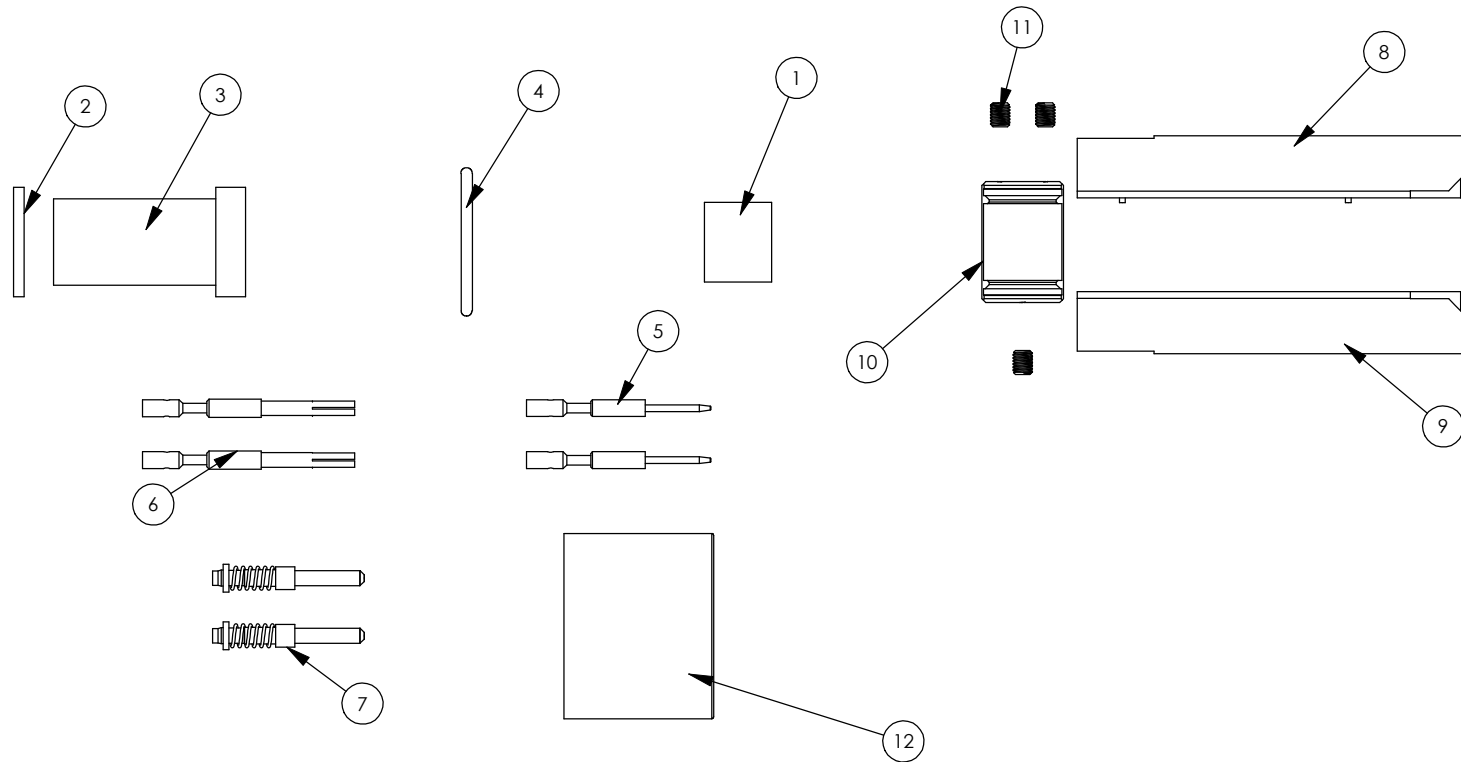


CATALOG P/N: 7763-3-3

PER ASME Y14.5M-1994 UNLESS OTHERWISE SPECIFIED: DIMENSIONS ARE IN INCHES [MM] TOLERANCES: DECIMAL: .XX [X.X] ± .01 [0.3] .XXX [X.XX] ± .005 [0.13] .XXXX [X.XXX] ± .XXXX ANGLES: ± 2° SCALE: 1:1				by WINCHESTER ELECTRONICS		Winchester Electronics Corporation 62 Barnes Industrial Road North Wallingford, Connecticut 06492		
CUSTOMER SALES DRAWING				THIRD ANGLE		TRI-LOC, SMPTE 304, RECEPTACLE		
DRAWN	DATE	APPROVED	DATE	A	SD7763-3-3	SHT 1	OF 2	REV D
PSM	03/25/09	RL	08/03/09					
APPROVED	DATE	APPROVED	DATE					
WPM	08/03/09	JCF	01/19/10					

REV	DESCRIPTION	BY DATE	APPD
D	REVISED PER ER30231	JCF 01/06/11	XXX

REPLACEMENT COMPONENT ORDERING NUMBERS



12	VNSC-748U	RED LDPE PROTECTIVE CAP, .906" ID	25
11	78-0102U	#4-40 HEX SET SCREW	10
10	78-1012U	STRENGTH MEMBER SUPPORT CLAMP	10
9	78-3011U	JACK INSULATOR HALF SIDE "A"	25
8	78-3010U	JACK INSULATOR HALF SIDE "B"	25
7	78-7016U	TERMINI FOR MANUAL POLISH W/PROT. CAP	10
6	78-4204U	JACK MALE CRIMP CONTACT	50
5	78-4203U	JACK FEMALE CRIMP CONTACT	50
4	78-0705U	REAR O-RING	25
3	78-0701U	REAR CABLE SEAL	25
2	78-0301U	WASHER FOR REAR CABLE SEAL	25
1	1-8156U	CRIMP SLEEVE (CABLE SHIELD FERRULE)	25
ITEM NO.	PART NO.	Description	QTY.

CATALOG P/N: 7763-3-3

<small>PER ASME Y14.5M-1994 UNLESS OTHERWISE SPECIFIED: DIMENSIONS ARE IN INCHES [MM] TOLERANCES: DECIMAL: .XX [X.X] ± .01 [0.3] .XXX [X.XX] ± .005 [0.13] .XXXX [X.XXX] ± .XXXX ANGLES: ± 2° SCALE: 1:1</small>		 by WINCHESTER ELECTRONICS Winchester Electronics Corporation 62 Barnes Industrial Road North Wallingford, Connecticut 06492	
CUSTOMER SALES DRAWING		TRI-LOC, SMPTE 304, RECEPTACLE	
<small>DRAWN DATE</small> PSM 03/25/09	<small>APPROVED DATE</small> RL 08/03/09	<small>THIRD ANGLE</small> 	<small>DATE</small> 01/19/10
<small>APPROVED DATE</small> WPM 08/03/09	<small>APPROVED DATE</small> JCF 01/19/10	A	<small>SHT OF REV</small> SD7763-3-3 2 2 D