

## FEATURES

- ◆ RoHS compliant
- ◆ Efficiency up to 86%
- ◆ SIP Package
- ◆ Wide temperature performance at full 2 Watt load, -40°C to 85°C
- ◆ UL 94V-0 package material
- ◆ No heatsink required
- ◆ Low ripple and good EMC Features
- ◆ Industry standard pinout
- ◆ Power sharing on output
- ◆ I/O Isolation 1500VDC
- ◆ Short Circuit Protection(automatic recovery)
- ◆ Internal SMD construction
- ◆ External On/Off control
- ◆ 2:1 wide input voltage range

## MODEL SELECTION

### WRA<sup>①</sup>05<sup>②</sup>05<sup>③</sup>Y<sup>④</sup>S<sup>⑤</sup>-2W<sup>⑥</sup>

- ① Product Series
- ② Input Voltage
- ③ Output Voltage
- ④ Wide (2:1) Input Range
- ⑤ SIP Package Style
- ⑥ Rated Power

## DESCRIPTION

The WRA\_YS-2W&WRB\_YS-2W series are specially designed for applications where a group of polar power supplies are isolated from the input power supply in a distributed power supply system on a circuit board.

These products apply to:

- 1) where the voltage of the input power supply is wide range (voltage range  $\leq 2:1$ );
- 2) where isolation is necessary between input and output (isolation voltage  $\leq 1500VDC$ );
- 3) where the regulation of the output voltage and the output ripple noise are demanded.



MICRODC reserves the copyright

## SELECTION GUIDE

order code	Input			Output			Efficiency (% Typ)
	Voltage(VDC)			Current(MA)		Voltage (VDC)	
	Nominal	Range	Max*	Max	Min		
WRA0505YS-2W	5	4.5-9.0	11	±200	±20	±5	67
WRA0512YS-2W	5	4.5-9.0	11	±83	±8	±12	72
WRA0515YS-2W	5	4.5-9.0	11	±67	±7	±15	73
WRB0505YS-2W	5	4.5-9.0	11	400	40	5	67
WRB0509YS-2W	5	4.5-9.0	11	222	22	9	72
WRB0512YS-2W	5	4.5-9.0	11	167	16	12	73
WRB0515YS-2W	5	4.5-9.0	11	133	13	15	72
WRA1205YS-2W	12	9.0-18.0	22	±200	±20	±5	73
WRA1212YS-2W	12	9.0-18.0	22	±83	±8	±12	78
WRA1215YS-2W	12	9.0-18.0	22	±67	±7	±15	77
WRB1205YS-2W	12	9.0-18.0	22	400	40	5	75
WRB1209YS-2W	12	9.0-18.0	22	222	22	9	77
WRB1212YS-2W	12	9.0-18.0	22	167	16	12	79
WRB1215YS-2W	12	9.0-18.0	22	133	13	15	80
WRA2405YS-2W	24	18.0-36.0	40	±200	±20	±5	76
WRA2412YS-2W	24	18.0-36.0	40	±83	±8	±12	79
WRA2415YS-2W	24	18.0-36.0	40	±67	±7	±15	78
WRB2403YS-2W	24	18.0-36.0	40	500	50	3.3	67
WRB2405YS-2W	24	18.0-36.0	40	400	40	5	77
WRB2409YS-2W	24	18.0-36.0	40	222	22	9	79
WRB2412YS-2W	24	18.0-36.0	40	167	16	12	80
WRB2415YS-2W	24	18.0-36.0	40	133	13	15	80
WRA4805YS-2W	48	36.0-72.0	80	±200	±20	±5	75
WRA4812YS-2W	48	36.0-72.0	80	±83	±8	±12	79
WRA4815YS-2W	48	36.0-72.0	80	±67	±7	±15	79
WRB4805YS-2W	48	36.0-72.0	80	400	40	5	75
WRB4809YS-2W	48	36.0-72.0	80	222	22	9	76
WRB4812YS-2W	48	36.0-72.0	80	167	16	12	78
WRB4815YS-2W	48	36.0-72.0	80	133	13	15	78

\*Input voltage can't exceed this value, or will cause the permanent damage.

## OUTPUT SPECIFICATIONS

Parameter	Test conditions	Min.	Typ.	Max.	Units
Output power	Refer to product program	0.2		2	W
Line regulation	Input voltage from low to high		±0.2	±0.5	%
Load regulation	10% to 100% full load(WRB_YS-2W)		±0.5	±0.75	%
	10% to 100% full load(WRA_YS-2W)*		±0.5	±1.0	%
Output voltage accuracy	Refer to recommended circuit		±1	±3.0	%
Temperature drift(Vout)	Refer to recommended circuit			±0.03	%/°C
Output Ripple**	20MHz Bandwidth		25	75	MV p-p
Output Noise**	20MHz Bandwidth		25	75	MV p-p
Switching frequency	100% Full load, input voltage range		300		KhZ

\* Dual output models unbalanced load (25/100%): ±5%Max

\*\*Test ripple and noise by "parallel cable" method. See detailed operation instructions at Testing of Power Converter section, application notes.

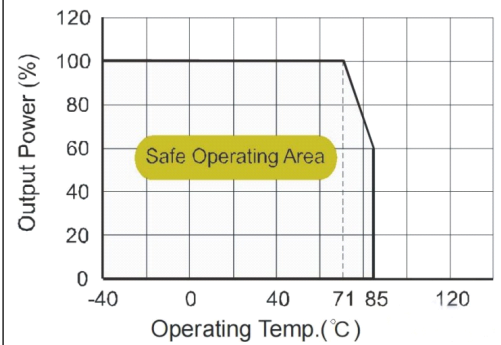
### TEMPERATURE CHARACTERISTICS

Parameter	Conditions	Min.	Typ.	Max.	Units
Storage humidity range				95	%
NO-load power consumption			120		°C
Operating temperature		-40		85	°C
Storage temperature		-55		125	°C
Lead temperature	1.5mm from case for 10 seconds			300	°C
Temp.rise at full load			15	35	°C
Cooling	Free air convection				
Case material	Plastic(UL94-V0)				
Short circuit protection*	Continuous,automatic recovery				
MTBF		1000		1	S
Weight			5		g

\*Supply voltage must be discontinued at the end of short circuit duration.

### TYPICAL CHARACTERISTICS

Temperature Derating Graph



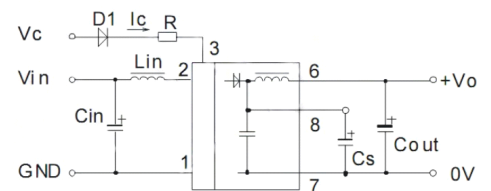
### ISOLATION SPECIFICATIONS

Parameter	Test conditions	Min.	Typ.	Max.	Units
Isolation test voltage	Flash tested for 1 minute and 1mA max	1500			VDC
Isolation resistance	Test at Viso=500VDC	1000			MΩ
Isolation capacitance	100KHz,1v		35		pF

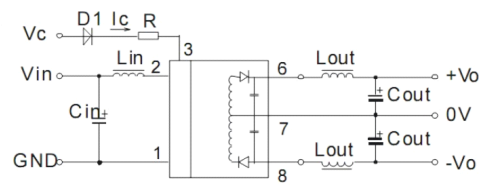
### RECOMMENDED CIRCUIT

OUTPUT Graph

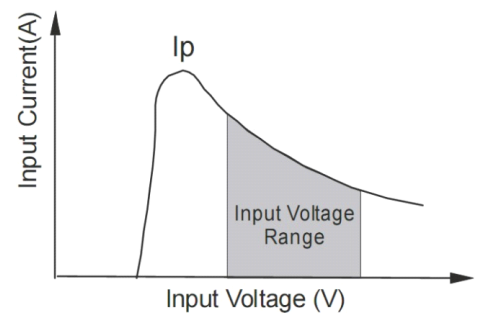
Single Output



Dual Output



(Figure 1)



(Figure 2)

### APPLICATION NOTE

#### SIZE Graph

#### 1) Recommended circuit

If you want to further decrease the input/output ripple, an LC filtering network may be connected to the input and output ends of the DC/DC converter, see (Figure 1). However, the capacitance of the output filter capacitor must be proper. If the capacitance is too big, a startup problem might arise. For every channel of output, provided the safe and reliable operation is ensured, the greatest capacitance of its filter capacitor sees (Table 1). General:

Cin: 5V,12V 100PF  
24V,48V 10uF  
Cout: 47PF(typ.)  
Lin: 4.7PH ~120PH  
Lout:2.2PH ~10PH  
Cs: 10uF ~ 22uF

#### 2) CTRL Terminal

When open or high impedance, the converter works well; when this pin is high; the converter shutdown; it should be noted that the input current (Ic) should be between 5-10mA, exceeding the maximum 20mA will cause permanent damage to the converter. The value of R can be derived as follows:

$$R = \frac{V_C - V_D - 1.0}{I_C}$$

#### 3) Input current

While using an unstable power source, please ensure the output voltage and ripple voltage do not exceed the indexes of the converter. The preceding power source must be able to provide for the converter sufficient starting current Ip (Figure 2).

General:  $I_p \leq 1.4 \cdot I_{in-max}$

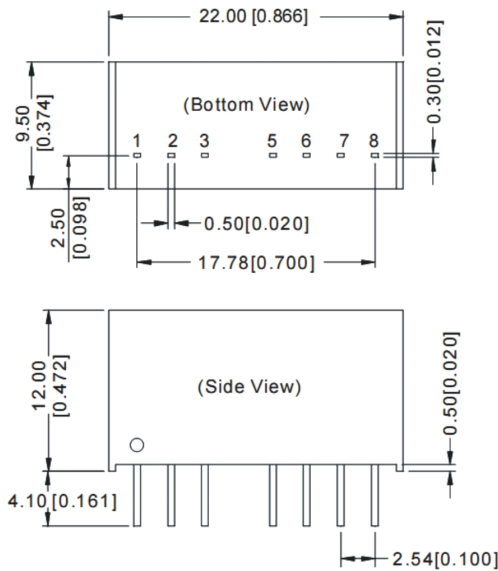
#### 4) No parallel connection or plug and play

EXTERNAL CAPACITOR TABLE (TABLE 1)

Single Vout (VDC)	Cout (μF)	Dual Vout (VDC)	Cout (μF)
5	680	±5	330
9	560	±12	220
12	470	±15	150
15	330	-	-

### OUTLINE DIMENSIONS & FOOTPRINT DETAILS

#### MECHANICAL DIMENSIONS



Note:  
 Unit:mm[inch]  
 Pin section tolerances:±0.10mm[±0.004inch]  
 General tolerances:±0.25mm[±0.010inch]

#### FOOTPRINT DETAILS

Pin	Single	Dual
1	GND	GND
2	Vin	Vin
3	CTRL	CTRL
5	NC	NC
6	+V0	+V0
7	0V	0V
8	CS	-V0

NC:No connection

Note:

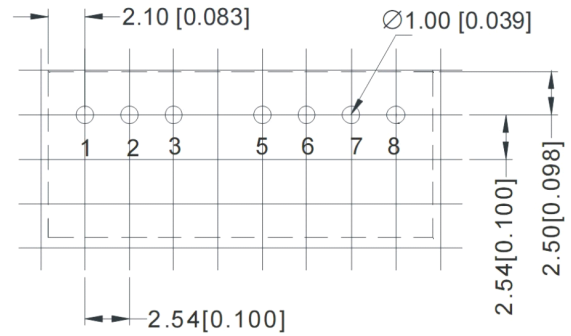
- The load shouldn't be less than 10%, otherwise ripple will increase dramatically.
- Operation under 10% load will not damage the converter; However, they may not meet all specification listed.
- All specifications measured at Ta=25 ° C, humidity<75%, nominal input voltage and rated output load unless otherwise specified.
- In this datasheet, all the test methods of indications are based on corporate standards.
- Only typical models listed, other models may be different, please contact our technical person for more details.

**MICRODC**  
 Professional Power Module

Microdc Professional Power Module,Inc.  
 Tel:0086-20-86000646 E-mail:tech@microdc.cn  
 Website:http://www.microdc.cn

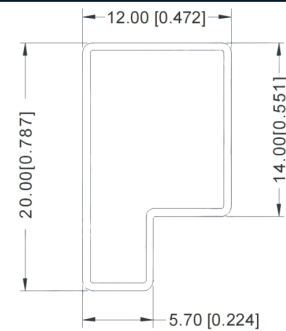


#### RECOMMENDED FOOTPRINT



RECOMMENDED FOOTPRINT  
 Top view,grid:2.54mm(0.1inch)  
 diameter:1.00mm(0.039inch)

#### TUBE OUTLINE DIMENSIONS



Note:  
 Unit :mm[inch]  
 General tolerances: ±0.50mm[±0.020inch]  
 L=530mm[20.866inch] Tube Quantity: 22pcs  
 L=220mm[8.661inch] Tube Quantity: 8pcs

**When the environment temperature is higher than 71°C, the product output power should be less than 60% of the rated power. No parallel connection or plug and play.**

**No parallel connection or plug and play.**

**Use dual output simultaneously, forbid opening output pin (0V) to use as single output.**

#### RoHS COMPLIANT INFORMATION

This series is compatible with RoHS soldering systems with a peak wave solder temperature of 300° C for 10 seconds. The pin termination finish on the SIP package type is Tin Plate, Hot Dipped over Matte Tin with Nickel Preplate. The DIP types are Matte Tin over Nickel Preplate. Both types in this series are backward compatible with Sn/Pb soldering systems.

#### REACH COMPLIANT INFORMATION

This series has proven that this product does not contain harmful chemicals, it also has harmful chemical substances through the registration, inspection and approval.