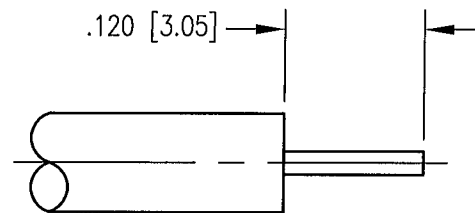
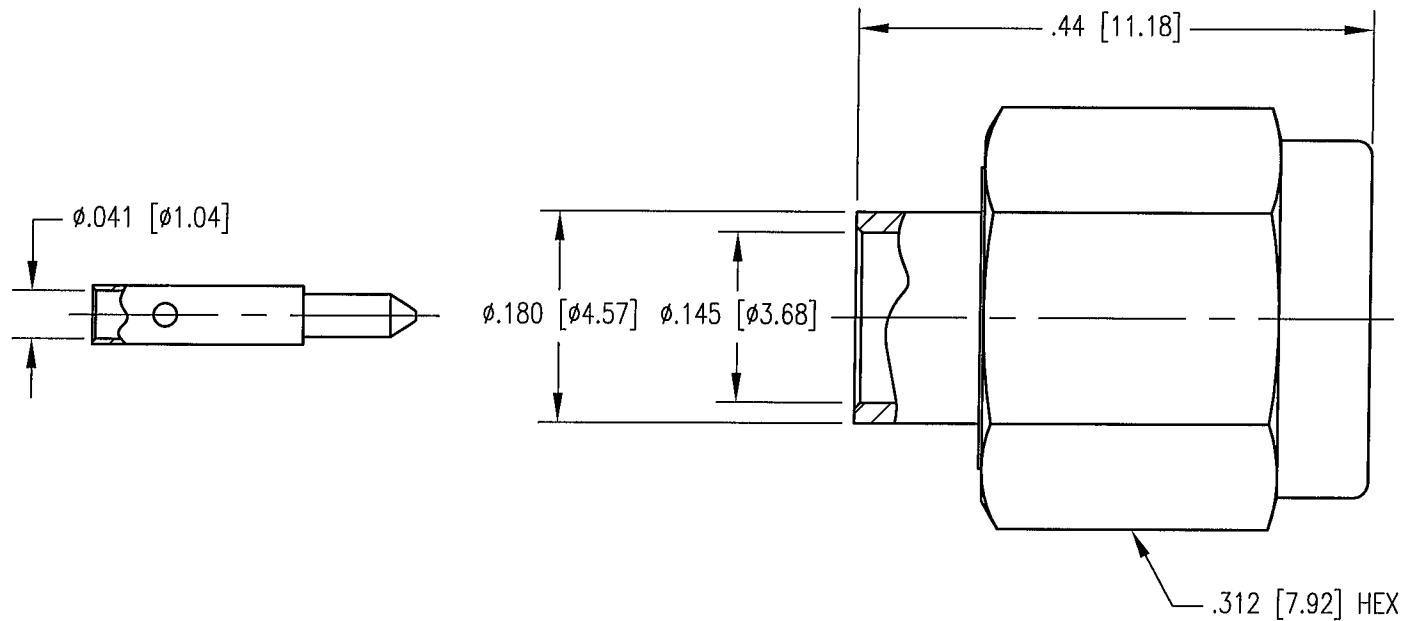


REV	DESCRIPTION	BY DATE	APPD
C	ECR 7083	11/17/01	JEM



CABLE TRIMMING DIMENSIONS

NOTES:

- MATERIALS:  
 CENTER CONTACT: BRASS PER ASTM B16  
 INSULATOR: TEFLON PER ASTM D1710  
 COUPLING NUT & BODY: STAINLESS STEEL PER ASTM A582  
 GASKET: SILICONE RUBBER PER ZZ-R-765  
 RETAINING RING: BERYLLIUM COPPER PER ASTM B194
- FINISH:  
 CENTER CONTACT: .000030 MIN. GOLD PER MIL-G-45204 OVER  
 .000050 MIN. NICKEL PER QQ-N-290  
 BODY: .000015 MIN. GOLD PER MIL-G-45204 OVER  
 .000050 MIN. NICKEL PER QQ-N-290  
 COUPLING NUT: PASSIVATED PER ASTM A967
- ELECTRICAL:  
 IMPEDANCE: 50 OHMS  
 FREQUENCY: 0 - 18.0 GHZ  
 INSULATION RESISTANCE: 5000 MEGOHMS MIN.
- FOR USE WITH .141 DIA. SEMI-RIGID CABLE OR EQUIVALENT.
- FOR CABLING PROCEDURE USE CAP 5-02 WITH TRIMMING DIMENSIONS SHOWN.

PER ASME Y14.5M-1994 UNLESS OTHERWISE SPECIFIED: DIMENSIONS ARE IN INCHES [MM] TOLERANCES: DECIMALS .XX ± .01/0.254 .XXX ± .005/0.127 ANGLES ± 2°		<b>Litton</b> Winchester/Retconn 400 Park Road Watertown, Connecticut 06785	
<b>CUSTOMER DRAWING</b>		TITLE SMA PLUG, SOLDER TYPE	
DRAWN JED	DATE 11/1/01	CHECKED JEM	DATE 12-19-01
APPROVED JEM	DATE 12/17/01	APPROVED JEM	DATE 12/19/01
A		250-500-1418P	SMT. OF REV. 1 1 C