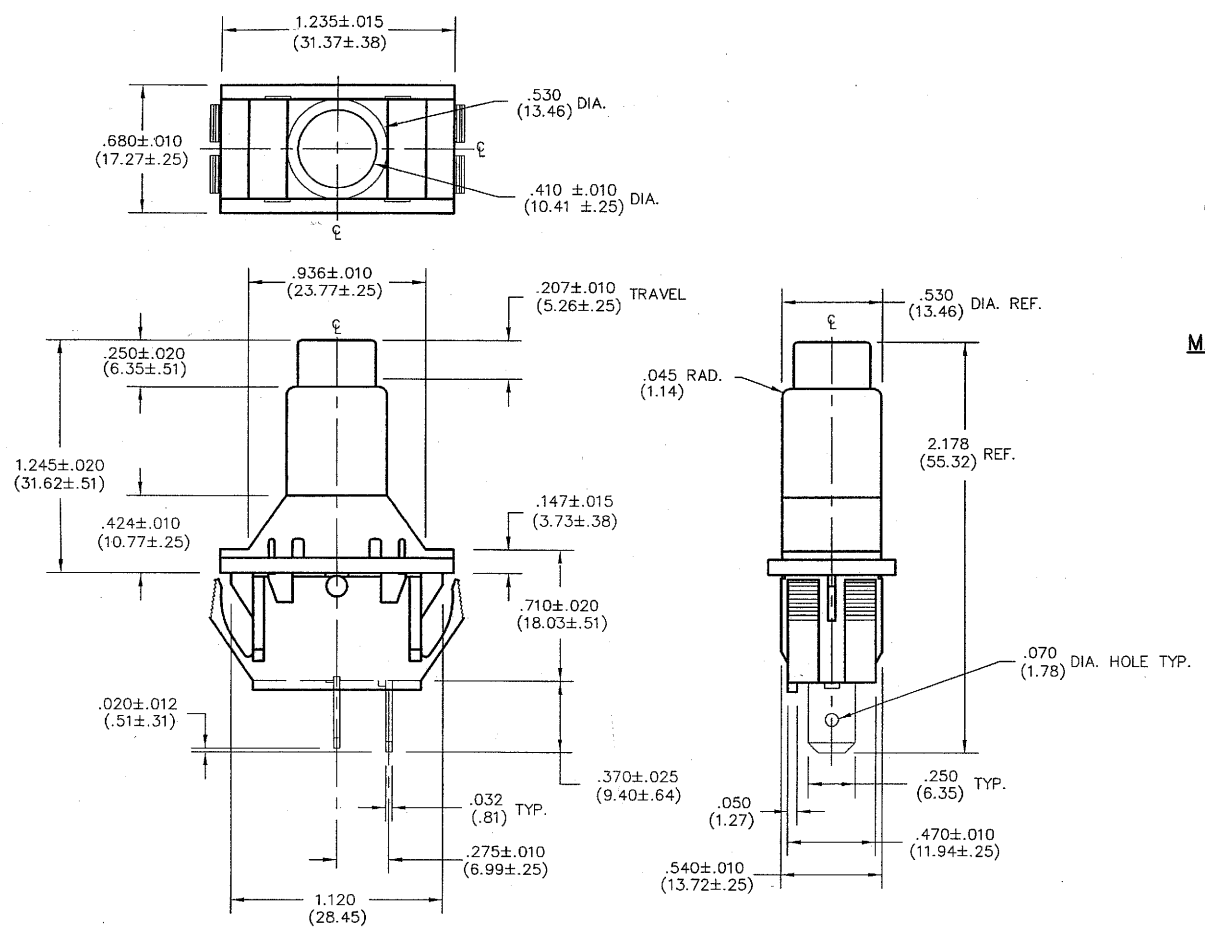


E  
D  
C  
B  
A



**MATERIALS:**

HOUSING AND ROCKER: NYLON 6/6 85°C MATERIAL  
 TERMINAL AND MOVING CONTACT: COPPER ALLOY

**RATINGS:**

16A. 125V.A.C. 12A. 250V.A.C.  
 3/4 H.P. 125-250V.A.C.  
 12 (6)A. 250 ~ VDE

OPERATING TEMPERATURE/HUMIDITY: -30C - 85C/100 Hour Soak @ 95% RH and 50C and 1 Hour dry in ambient = > 10 M ohms

ELECTRICAL CYCLES: UL Rated 6K Cycles, VDE 10K Cycles

MECHANICAL CYCLES: 100K Cycles

FLAMMABILITY RATING: UL 94V - 2

REGULATORY APPROVALS: UL 1054/VDE EN61058/CSA C22.2 No. 55

B-FORMAT 2002	<b>REVISIONS</b>	0								<p><b>CW INDUSTRIES</b>                  Southampton, Pa. 18966</p> <p>TOLERANCES UNLESS OTHERWISE SPECIFIED</p> <table border="1"> <tr> <td>2 Place Decimal ±.010</td> <td>METRIC</td> </tr> <tr> <td>3 Place Decimal ±.005</td> <td>1 Place Dec. ±.25mm</td> </tr> <tr> <td>Angles ..... ±1°</td> <td>2 Place Dec. ±.13mm</td> </tr> </table>		2 Place Decimal ±.010	METRIC	3 Place Decimal ±.005	1 Place Dec. ±.25mm	Angles ..... ±1°	2 Place Dec. ±.13mm
		2 Place Decimal ±.010	METRIC														
		3 Place Decimal ±.005	1 Place Dec. ±.25mm														
		Angles ..... ±1°	2 Place Dec. ±.13mm														
RELEASED: DGW 10-26-2009								<p>Title: <b>SWITCH ASSEMBLY PUSH ON/OFF S.P.- S.T.</b></p> <p>Division: <b>SWITCH</b></p>									
<b>OCT 26 2009</b>																	
									<p>Dwg. No. <b>GRSN-2011-2002</b></p>								

PDF File Made

Made for: CW IND.  
 Drawn by: DGW 10-26-2009  
 Checked by: *G. Guld 10-26-09*  
 Approval: *G. Guld 10-26-09*

**MASTER**