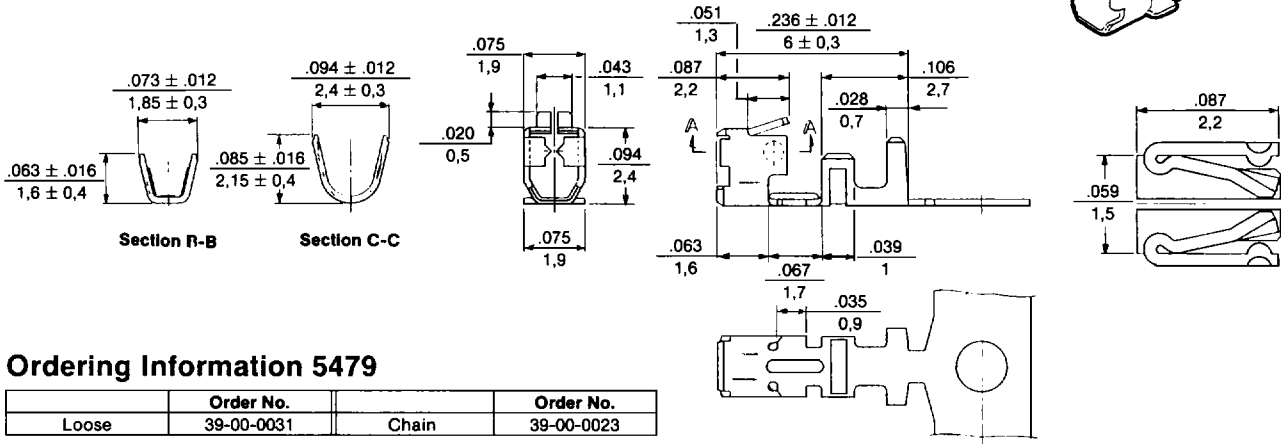
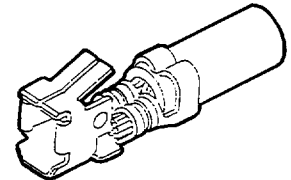
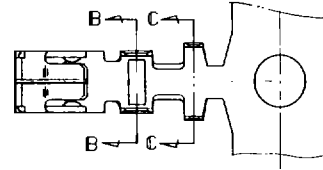


.098" (2,5 mm) Center Wire-to-Board System



5479 Series Low Profile Terminal

- For use with Molex 5480 housing
- Wire range AWG 22-28 with max. ins. dia. .075" (1,9mm)
- Current rating (with max. wire size) 3 amps DC/AC
- Voltage rating, 250 V AC/DC
- Phosphor bronze, pre-tinned

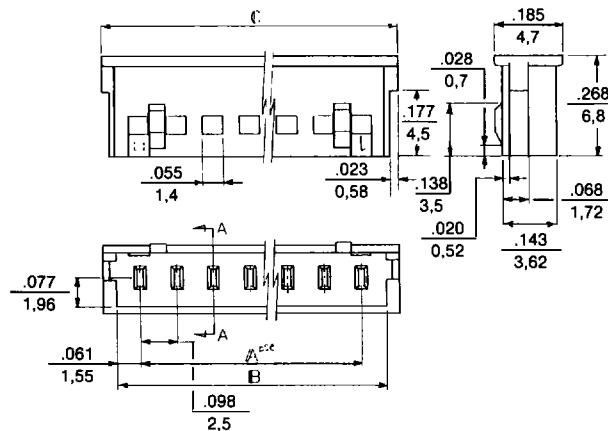
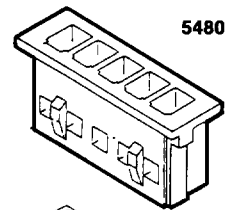


Ordering Information 5479

	Order No.		Order No.
Loose	39-00-0031	Chain	39-00-0023

5480 Series Low Profile Housing

- Mates with Molex 5483 and 5484 Series headers
- UL 94V-2 polyester material
- Dielectric strength 1000V AC 1 min.



Dimensional Information 5480

Circuits	Dim. A	Dim. B	Dim. C	Circuits	Dim. A	Dim. B	Dim. C	Circuits	Dim. A	Dim. B	Dim. C
2	.098 2,5	.220 5,6	.291 7,4	6	.492 12,5	.614 15,6	.685 17,4	10	.886 22,5	1.008 25,6	1.079 27,4
3	.197 5,0	.319 8,1	.390 9,9	7	.591 15,0	.713 18,1	.783 19,9	11	.984 25,0	1.106 28,1	1.177 29,9
4	.295 7,5	.417 10,6	.488 12,4	8	.689 17,5	.811 20,6	.882 22,4	12	1.083 27,5	1.205 30,6	1.276 32,4
5	.394 10,0	.516 13,1	.587 14,9	9	.787 20,0	.909 23,1	.908 24,9	13	1.181 30,0	1.327 33,1	1.374 34,9

Ordering Information 5480

Circuits	Order No.	Circuits	Order No.	Circuits	Order No.	Circuits	Order No.	Circuits	Order No.	Circuits	Order No.
2	39-01-0023	4	39-01-0043	6	39-01-0063	8	39-01-0083	10	39-01-0103	12	39-01-0123
3	39-01-0033	5	39-01-0053	7	39-01-0073	9	39-01-0093	11	39-01-0113	13	39-01-0133