

New Jersey Semi-Conductor Products, Inc.

20 STERN AVE.
 SPRINGFIELD, NEW JERSEY 07081
 U.S.A.

TELEPHONE: (973) 376-2922
 (212) 227-6005
 FAX: (973) 376-8860

PARAMETERS

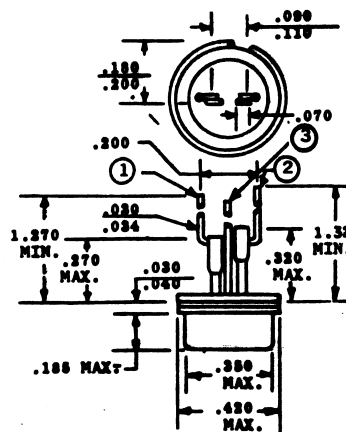
2N4190

SCR, V(DRM) = 600 V TO 699.9 V

Description: SCR, V(DRM) = 600 V to 699.9 V

Manufacturer.....	
Mil/High-Rel? (Y/N).....	
V(drm) Max.....	600
It(stat) Max. (A).....	8.02
@Temp. (test) (xC).....	75#
Supp Curr. I(TSM).....	100M
Firing Char-Igt Max.....	60
Firing Char-Vgt Max.....	2.
Id(off) Max. (A).....	2.0m
@Temp. (test) (xC).....	100u
I(h) Max. (A).....	60
V(T) Max.....	2.0
@It (A).....	15
Dv/Dt Worst Case.....	50B%
t(switch) Off Typ. Time (S)...	1.0u
@It (test) (A).....	5.0
t(switch) Off Typ. Time (S)...	15u
Oper. Temp (xC) Min.....	-40
Oper. Temp (xC) Max.....	100u
Pkg Style.....	
Surface Mounted (Y/N).....	N

u Junction Temperature # Case Temperature % @ above 125xC B Typical
 2 It(rms) M Over Full Temperature Range Measured at < 25xC



NJ Semi-Conductors reserves the right to change test conditions, parameter limits and package dimensions without notice. Information furnished by NJ Semi-Conductors is believed to be both accurate and reliable at the time of going to press. However NJ Semi-Conductors assumes no responsibility for any errors or omissions discovered in its use. NJ Semi-Conductors encourages customers to verify that datasheets are current before placing orders.