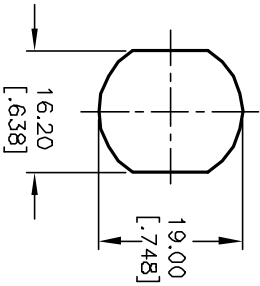


NOTES:

1. ALL DIMENSIONS IN MM [INCH]
2. GENERAL TOLERANCE: X.X=±0.4
X.XX=±0.25
3. TERM. NOS. FOR REF. ONLY
4. CONTACT RATING: 4A @125VAC/28VDC, 2A @250VAC
5. DIELECTRIC STRENGTH: 1KV RMS min. at sea level
6. ELECTRICAL LIFE: 10,000 make-and-break cycles at full load.
7. MATERIALS:

CONTACTS: Silver Plated Cu (Q Contact material)
 TERMINALS: GOLD Plated Cu (Q Contact material)
 MOUNTING NUT: Nickel Plated zinc alloy
 CONTACT SPRING: Piano Wire
 KEYS (2): Brass with code no. A126
 LOCK: Bright Ni plated zinc alloy with Ni facing
 TUMBLER Mechanism: 4-disc tumbler cylinder.

RECOMMENDED PANEL LAYOUT

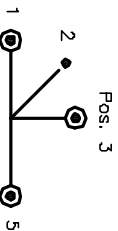


LEGEND

- =Detent Positions (45° or 90°)
- ⊙ =Key pull possible in these positions

CIRCUIT: SP (45°/45°/90° INDEXING)
 CONTACT CONFIGURATION

POS.	CONNECTED TERMINAL #	SWITCH FUNCTION		
POS. 1	POS. 2	POS. 3	POS. 4	POS. 5
6-7	7-8	B-1	NONE	1-3



REV.	ECN No.	DESCRIPTION	DATE	CHKD	AR
A	13055	RELEASED FOR PRODUCTION	4/17/03		AR

TITLE	SCALE	DATE	DR	DWG	REV
K0130V-A126	1:1	4/17/03	AR	K200231	A

E-SWITCH®

THE INFORMATION CONTAINED IN THIS DOCUMENT IS PROPRIETARY TO E-SWITCH AND IS NOT TO BE COPIED OR TRANSFERRED