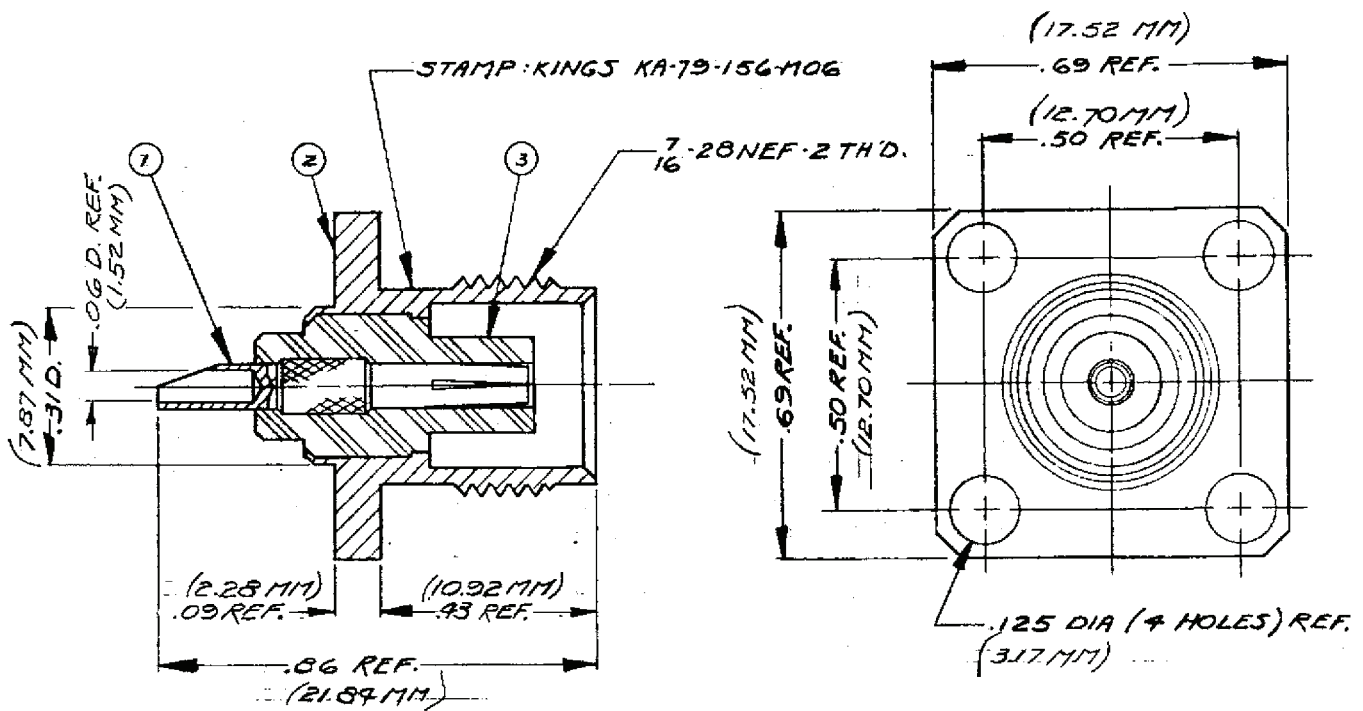


DASH NO.	M CODE	MADE FROM
----------	--------	-----------

KA-79-156-M06 S-D

REVISIONS	
NO.	CHANGES
0	ER 21055 PAS 19 SEP 80



NOTES:

1. SAME AS KA-79-33 EXCEPT CONTACT FINISH AND MARKING.

UNLESS OTHERWISE SPECIFIED:

- | | |
|-------------------------------------------------------------------------------------------|--------------------------------------------------|
| 1. TOLERANCES: FRACTIONS & 2 PLACE DECIMALS ± .010 | 2. REMOVE ALL BURRS, BREAK SHARP EDGES .006 MAX. |
| 3 PLACE DECIMALS ± .004 | 3. NO FILLETS PERMITTED |
| ANGLES ± 0°30' | 4. SURFACE ROUGHNESS 63 MICROINCHES RMS MAX. |
| T. I. R. CONCENTRICITY OF ANY 2 DIAMETERS MAY NOT EXCEED HALF THE SUM OF THEIR TOLERANCES | 5. ALL DIMENSIONS PRIOR TO PLATING. |
| | 6. ALL PLATING IN ACCORDANCE WITH KER 10004. |

SCALE:	
USED ON:	
REF: BOEING	
TNC PANEL RECEPTACLE	
DRAWN PAS	DATE 29 AUG 80
APP'D CgrND	DATE 18 SEP 80
 <small>KINGS ELECTRONICS CO., INC. EXCHANGE, NEW YORK, NY 10014</small>	
KA-79-156-M06	

S-D