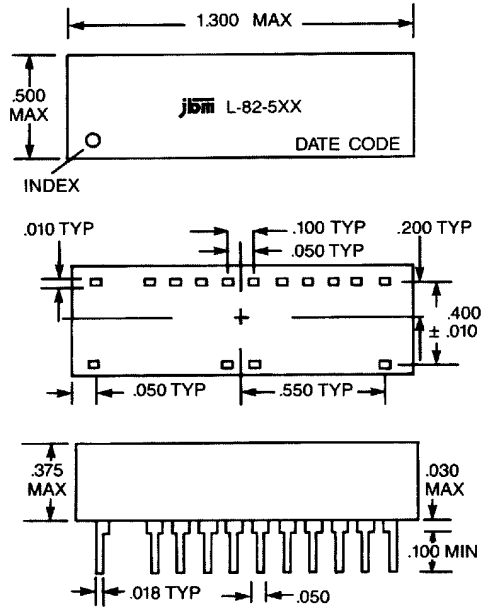


L-82-500 SERIES

100K ECL



FEATURES

- ECL Compatible
- 24 Pin Dip Configuration

DELAY LINE CHARACTERISTICS

Input Characteristics:

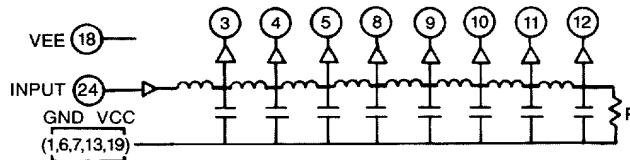
- V_{IH} Logic "1" Input Voltage -1.165V Min.
- V_{IL} Logic "0" Input Voltage -1.475V Max.
- I_{IH} Logic "1" Input Current 350 μ A Max.
- I_{IL} Logic "0" Input Current -5 μ A Max.

Output Characteristics:

- V_{OH} Logic "1" Output Voltage -1.025V Min.
- V_{OL} Logic "0" Output Voltage -1.62V Max.

Environment:

- Operating temperature -30°C to +85°C
- Storage temperature -55°C to +125°C
- Operating supply voltage -4.5V \pm 5%



DELAY TIMES & TOLERANCES @ VEE = 4.5V \pm .05V AND -1.3V LEVEL @ 25°C								
JBM P/N	TAP 1 PIN 3	TAP 2 PIN 4	TAP 3 PIN 5	TAP 4 PIN 8	TAP 5 PIN 9	TAP 6 PIN 10	TAP 7 PIN 11	OUTPUT PIN 12
L-82-510	2.0 \pm .5	4.0 \pm .5	6.0 \pm .6	8.0 \pm .8	10.0 \pm 1	12.0 \pm 1	14.0 \pm 1	16.0 \pm 1
L-82-511	2.5 \pm .5	5.0 \pm .5	7.5 \pm .75	10.0 \pm 1	12.5 \pm 1	15.0 \pm 1	17.5 \pm 1	20.0 \pm 1
L-82-512	3.0 \pm .5	6.0 \pm .6	9.0 \pm .9	12.0 \pm 1	15.0 \pm 1	18.0 \pm 1	21.0 \pm 1.2	24.0 \pm 1.5
L-82-513	3.5 \pm .5	7.0 \pm .7	10.5 \pm 1	14.0 \pm 1	17.5 \pm 1	21.0 \pm 1.2	24.5 \pm 1.5	28.0 \pm 1.5
L-82-514	4.0 \pm .7	8.0 \pm .8	12.0 \pm 1	16.0 \pm 1	20.0 \pm 1	24.0 \pm 1.2	28.0 \pm 1.5	32.0 \pm 1.5
L-82-515	4.5 \pm .7	9.0 \pm .9	13.5 \pm 1	18.0 \pm 1	22.5 \pm 1.2	27.0 \pm 1.5	31.5 \pm 1.5	36.0 \pm 1.5
L-82-516	5.0 \pm .7	10.0 \pm 1	15.0 \pm 1	20.0 \pm 1	25.0 \pm 1.2	30.0 \pm 1.5	35.0 \pm 1.5	40.0 \pm 2
L-82-517	6.0 \pm .8	12.0 \pm 1	18.0 \pm 1	24.0 \pm 1.2	30.0 \pm 1.5	36.0 \pm 1.5	42.0 \pm 2	48.0 \pm 2
L-82-518	7.0 \pm .8	14.0 \pm 1	21.0 \pm 1.2	28.0 \pm 1.5	35.0 \pm 1.5	42.0 \pm 2	49.0 \pm 2	56.0 \pm 2.5
L-82-519	8.0 \pm 1	16.0 \pm 1	24.0 \pm 1.2	32.0 \pm 1.5	40.0 \pm 2	48.0 \pm 2	56.0 \pm 2.5	64.0 \pm 3
L-82-520	9.0 \pm 1	18.0 \pm 1	27.0 \pm 1.5	36.0 \pm 1.5	45.0 \pm 2	54.0 \pm 2.5	63.0 \pm 3	72.0 \pm 3.5
L-82-521	10.0 \pm 1	20.0 \pm 1	30.0 \pm 1.5	40.0 \pm 2	50.0 \pm 2.5	60.0 \pm 3	70.0 \pm 3.5	80.0 \pm 4
L-82-522	12.5 \pm 1.5	25.0 \pm 1.5	37.5 \pm 1.5	50.0 \pm 2.5	62.5 \pm 3	75.0 \pm 3.5	87.5 \pm 4.5	100.0 \pm 5
L-82-523	15.0 \pm 1.5	30.0 \pm 1.5	45.0 \pm 2	60.0 \pm 3	75.0 \pm 3.5	90.0 \pm 4.5	105.0 \pm 5	120.0 \pm 6
L-82-524	17.5 \pm 1.5	35.0 \pm 1.5	52.5 \pm 2.5	70.0 \pm 3.5	87.5 \pm 4.5	105.0 \pm 5	122.5 \pm 6	140.0 \pm 7
L-82-525	20.0 \pm 1.5	40.0 \pm 2	60.0 \pm 3	80.0 \pm 4	100.0 \pm 5	120.0 \pm 6	140.0 \pm 7	160.0 \pm 8
L-82-526	25.0 \pm 1.5	50.0 \pm 2.5	75.0 \pm 3.5	100.0 \pm 5	125.0 \pm 6	150.0 \pm 7	175.0 \pm 9	200.0 \pm 10