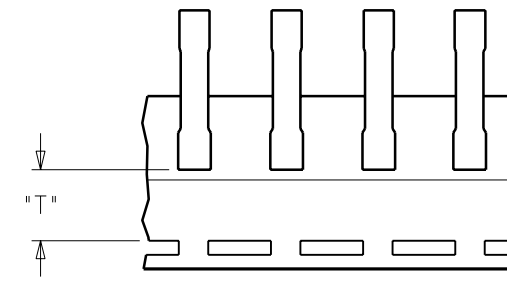
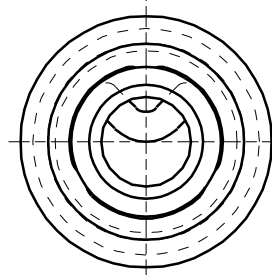
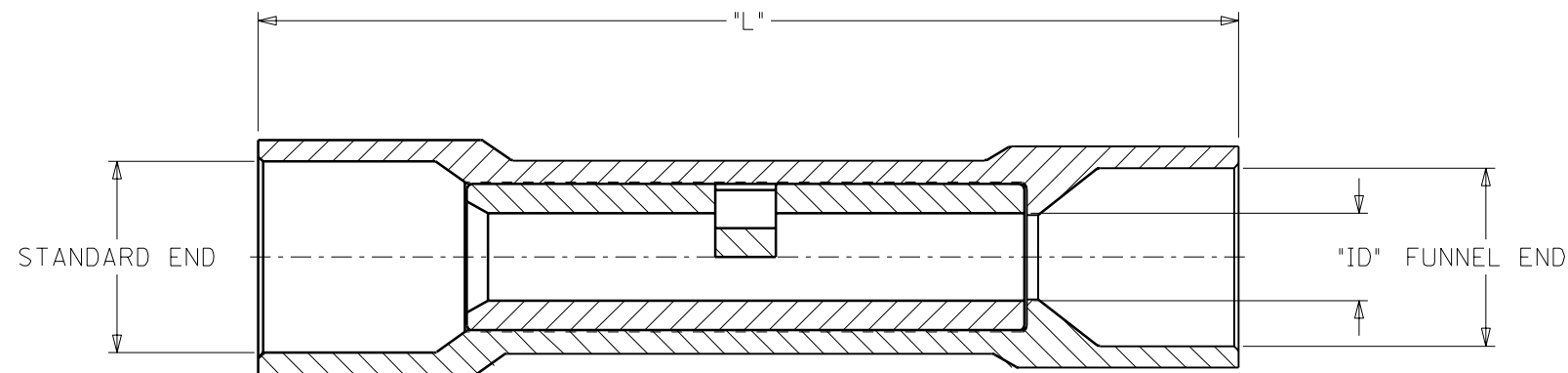


MATERIAL NUMBER	ALTERNATE NUMBER	WIRE SIZE AWG	INSULATION COLOR	CONNECTOR ID	MAX. WIRE INSUL. DIA.		LENTH "L2"	TAPE HEIGHT "T"	DESCRIPTION
					STANDARD END	FUNNEL END			
192020010	AS-932	22-18	LIGHT RED	.061	.161	.147	1.07	----	LOOSE PIECE
192020011	AS-932-DK	22-18	DARK RED	.061	.161	.147	1.07	----	LOOSE PIECE
192020012	AS-932-DKT	22-18	DARK RED	.061	.161	.147	1.07	.480	TAPE MOUNTED
192020026	BS-942	16-14	LIGHT BLUE	.087	.199	.185	1.07	----	LOOSE PIECE
192020030	BS-942T	16-14	LIGHT BLUE	.087	.199	.185	1.07	.480	TAPE MOUNTED
192020027	BS-942-DK	16-14	DARK BLUE	.087	.199	.185	1.07	----	LOOSE PIECE
192020029	BS-942-DKT	16-14	DARK BLUE	.087	.199	.185	1.07	.480	TAPE MOUNTED
192020028	BS-942-DKBT	16-14	DARK BLUE	.087	.199	.185	1.07	.480	TAPE MOUNTED LARGE REEL
192020131	BS-942-B	16-14	BLUE	.087	.199	.185	1.07	----	LOOSE PIECE
192020130	BS-932-BBT	16-14	BLUE	.087	.199	.185	1.07	.480	TAPE MOUNTED LARGE REEL
192020045	CS-952	12-10	YELLOW	.138	.276	.262	1.15	----	LOOSE PIECE
192020046	CS-952-DK	12-10	DARK YELLOW	.138	.276	.262	1.15	----	LOOSE PIECE
192020047	CS-952-DKT	12-10	DARK YELLOW	.138	.276	.262	1.15	.440	TAPE MOUNTED
192020048	CS-952-DKBT	12-10	DARK YELLOW	.138	.276	.262	1.15	.440	TAPE MOUNTED LARGE REEL
192020141	CS-952 BULK	12-10	YELLOW	.138	.276	.262	1.15	----	BULK PACKED, 2500 PER PACKAGE
192020142	CS-952-DK BULK	12-10	DARK YELLOW	.138	.276	.262	1.15	----	BULK PACKED, 2500 PER PACKAGE



PARTS ON TAPE

NOTES:
 1. MATERIAL: COPPER.
 2. PLATING: ELECTRON-TIN.
 3. INSULATION: 6/6 NYLON

CUSTOMER DRAWING

DIMENSIONS SHOWN (METRIC) INCH		REVISE ONLY ON CAD SYSTEM																	
UNLESS OTHERWISE SPECIFIED TOLERANCES: ANGULAR ± 1/2°		TITLE FUNNEL ENTRY SEAMLESS NYLAKRIMP BUTT CONNECTOR																	
<table border="1"> <thead> <tr> <th></th> <th>INCH</th> <th>METRIC</th> </tr> </thead> <tbody> <tr> <td>3 PLACE</td> <td>± .005</td> <td>± ---</td> </tr> <tr> <td>2 PLACE</td> <td>± .01</td> <td>± 0.13</td> </tr> <tr> <td>1 PLACE</td> <td>± ---</td> <td>± 0.25</td> </tr> </tbody> </table>			INCH	METRIC	3 PLACE	± .005	± ---	2 PLACE	± .01	± 0.13	1 PLACE	± ---	± 0.25	<table border="1"> <tr> <td>SHEET NO.</td> <td>DATE</td> </tr> <tr> <td>1 OF 1</td> <td>00/07/18</td> </tr> </table>		SHEET NO.	DATE	1 OF 1	00/07/18
	INCH	METRIC																	
3 PLACE	± .005	± ---																	
2 PLACE	± .01	± 0.13																	
1 PLACE	± ---	± 0.25																	
SHEET NO.	DATE																		
1 OF 1	00/07/18																		
DRAFT WHERE APPLICABLE MUST REMAIN WITHIN DIMENSIONS		<table border="1"> <tr> <td>moLEX ETC INC.</td> <td>PINELLAS PARK, FLA. 33781 U.S.A.</td> </tr> </table>		moLEX ETC INC.	PINELLAS PARK, FLA. 33781 U.S.A.														
moLEX ETC INC.	PINELLAS PARK, FLA. 33781 U.S.A.																		
<table border="1"> <tr> <td>DRWG. BY</td> <td>HEB</td> <td>CHK'D. BY</td> <td>RWD</td> </tr> <tr> <td>APP'D. BY</td> <td>RWD</td> <td>SCALE</td> <td>NO:NE</td> </tr> </table>		DRWG. BY	HEB	CHK'D. BY	RWD	APP'D. BY	RWD	SCALE	NO:NE	<table border="1"> <tr> <td>PART NO.</td> <td>DRWG. NO.</td> </tr> <tr> <td>SEE TABLE</td> <td>SD-19202-001</td> </tr> </table>		PART NO.	DRWG. NO.	SEE TABLE	SD-19202-001				
DRWG. BY	HEB	CHK'D. BY	RWD																
APP'D. BY	RWD	SCALE	NO:NE																
PART NO.	DRWG. NO.																		
SEE TABLE	SD-19202-001																		
<table border="1"> <tr> <td>FILE NAME</td> <td>THIS DRAWING CONTAINS INFORMATION THAT IS PROPRIETARY TO MOLEX-ETC INC. AND SHOULD NOT BE USED WITHOUT WRITTEN PERMISSION.</td> <td>DIV.</td> <td>SIZE</td> </tr> <tr> <td>SD19202001 DGN</td> <td></td> <td>ET</td> <td>B</td> </tr> </table>		FILE NAME	THIS DRAWING CONTAINS INFORMATION THAT IS PROPRIETARY TO MOLEX-ETC INC. AND SHOULD NOT BE USED WITHOUT WRITTEN PERMISSION.	DIV.	SIZE	SD19202001 DGN		ET	B										
FILE NAME	THIS DRAWING CONTAINS INFORMATION THAT IS PROPRIETARY TO MOLEX-ETC INC. AND SHOULD NOT BE USED WITHOUT WRITTEN PERMISSION.	DIV.	SIZE																
SD19202001 DGN		ET	B																

A	RELEASE NEW DOC. ETC2001-0075 2000/07/18 HEB
LTR.	REVISIONS