

PE Series CHASSIS MOUNT, SINGLE AND DOUBLE STAGE EMI/RFI LINE FILTER.



FEATURES

The PE series provides general-purpose common mode and differential mode filters. These filters are designed in a small package and offers single and double stage filtering.

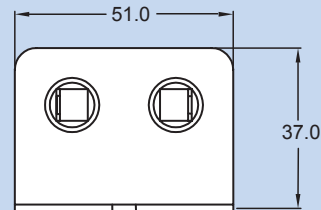
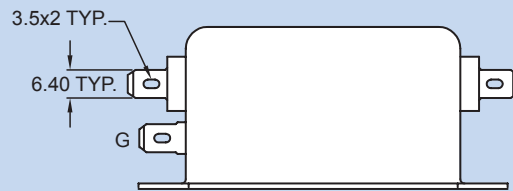
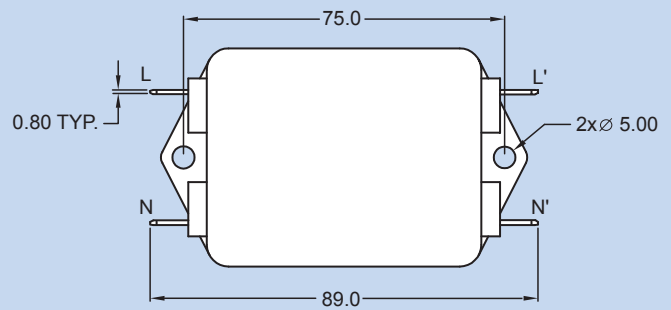
APPLICATIONS

Computer & networking equipment, Measuring & control equipment, Data processing equipment, laboratory instruments, Switching power supplies, other electronic equipment.

TECHNICAL DATA

- Rated Voltage: 250VAC
- Rated Current: 5A, 10A, 15A, 20A, 30A
- Power Line Frequency: 60Hz
- Leakage Current: 0.8mA, 250VAC
- Hipot Rating (one minute)
 - Line to Ground: 2250VDC
 - Line to Line: 1450VDC
- Temperature Range: -25C to +85C


MECHANICAL DIMENSIONS (Unit: mm)



Specifications subject to change without notice. Dimensions (mm).

PE Series Example & Ordering Code

PE 05 Q - 1

CURRENT RATING (A): 	= 05 = 10 = 15 = 20 = 30*
TERMINAL:	QUICK CONNECT = Q SCREW = PS
SCHEMATIC:	(ONE STAGE) = 1 (TWO STAGE) = 2

* Screw Mount Only

PE Series Attenuation Tables

Non-Medical Applications

Insertion loss in dB (50 Ohm circuit)

ONE STAGE

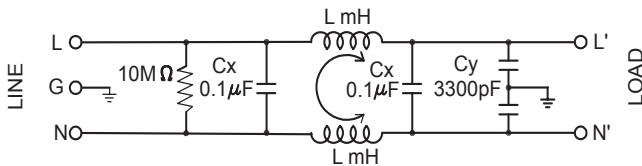
Current Rating	Inductance in mH	Comm. Mode(L-G) MHz						Diff. mode(L-L) MHz					
		.15	.5	1	5	10	30	.15	.5	1	5	10	30
5A	5.0	6	42	38	35	37	32	30	40	33	29	31	27
10A	3.0	28	42	37	34	34	35	5	44	42	39	40	38
15A	2.0	23	39	31	28	30	23	9	39	37	33	36	27
20A	0.9	14	22	24	31	34	28	9	32	31	36	39	34
30A	0.5	16	24	26	29	38	39	14	22	34	35	42	40

TWO STAGE

Current Rating	Inductance in mH	Comm. Mode(L-G) MHz						Diff. mode(L-L) MHz					
		.15	.5	1	5	10	30	.15	.5	1	5	10	30
5A	5.0	53	84	70	58	53	51	7	57	58	57	52	48
10A	1.2	26	63	76	66	62	42	8	77	72	62	57	53
15A	0.9	28	57	68	67	63	46	15	33	60	59	56	61
20A	0.5	14	39	49	63	59	38	13	25	57	64	57	45

SCHEMATICS

ONE STAGE



TWO STAGE

