

# POWER LINE CHOKE

## (DRUM CORE STYLE)

Electrical Specifications at 25°C

Parameter	Min.	Typ.	Max.	Units
Inductance <sup>1</sup>	40	50	60	mH
I <sub>MAX</sub> <sup>2</sup>		1.3		A
DCR		4.3		Ω
Lead Diameter		.0226 (0.57)		inches (mm)

### Applications

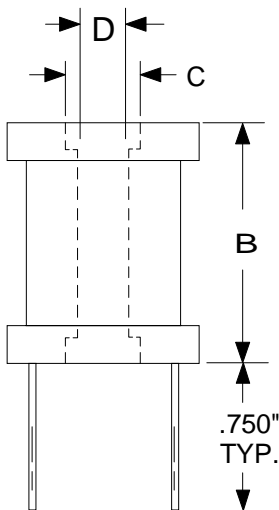
Power Amplifiers  
 Filters Power Supplies  
 SCR and Triac Controls  
 Speaker Crossover Networks  
 RFI Suppression

Operating temperature Range  
 -45°C to +85°C

#### Test Conditions:

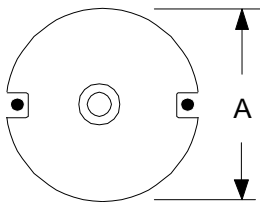
1. Inductance tested at 100 mV<sub>RMS</sub> and 1 kHz (No DC Bias On)
2. Current for 10% drop in Inductance.

Dimensions in inches



Dim.	inches
A	1.770
B	1.380
C	0.360
D	0.270

High Saturation  
 Pre-Tinned Leads  
 Center hole for mechanical mounting



Leads are .022 (#23 AWG)  
 Leads tinned to within 1/8" of body.

RHOMBUS P/N: <b>L-732</b>	
CUST P/N:	NAME:
DATE: <b>11/16/01</b>	SHEET: