

6

5

4

3

2

1

MATERIAL AND FINISH:

Insulator: Polycarbonate, UL-94V-0 rated
Contacts: Brass
Screw: Brass, Nickel Plated over Copper
Nut: Brass, Nickel Plated

ELECTRICAL SPECIFICATIONS:

Current rating: 10 A/15 A
Voltage rating: 250 VAC
Insulation resistance: 100 Mohm min. at 500 VDC
Dielectric withstanding voltage: 2000 VAC for one minute

ORDERING CODE:




43R02-2 1
 1 2

1) COLOR




1 = BLACK
2 = GRAY

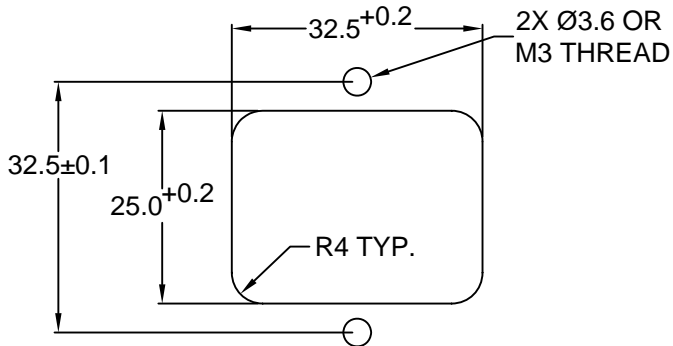
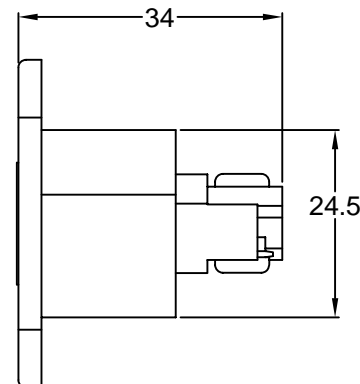
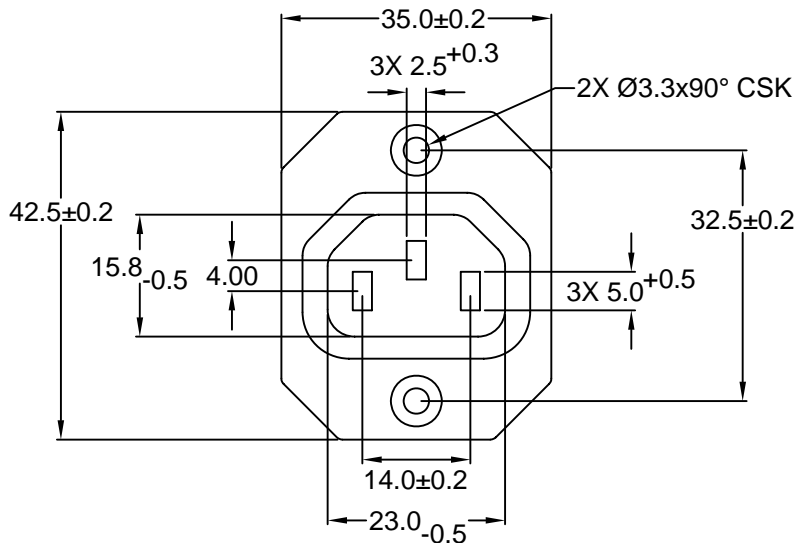
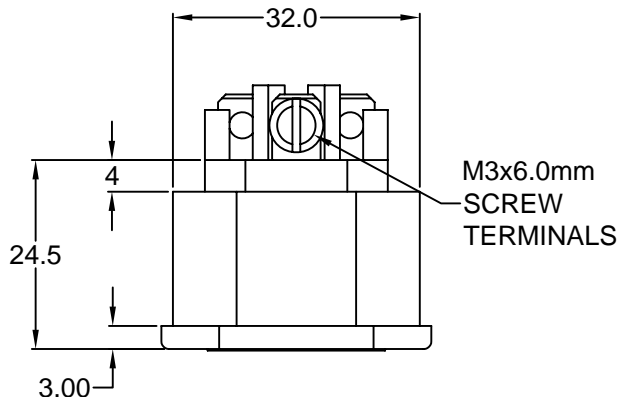
2) ELECTRICAL CIRCUIT CONFIGURATION

1 = 10A 250V 70°C 

15A 250V 70°C   

2 = 10A 250V 120°C

15A 250V 120°C   



RECOMMENDED
PANEL CUTOUT

RoHS
COMPLIANT

| | |
|-----------------------------------------|--------|
| TOLERANCE UNLESS OTHERWISE SPECIFIED | |
| X | ± 1 |
| X.X | ± 0.4 |
| X.XX | ± 0.20 |

Power Dynamics, Inc.
Phone: 973 560-0019 Whippany, New Jersey Fax: 973 560-0076

PART: 10A/15A IEC 60320 APPL. OUTLET; SCREW
TERMINALS; CROSS FLANGE, PANEL MOUNT

| | | | |
|----------|----|-------|----------|
| DRAWN BY | GQ | DATE: | 10/04/01 |
| CHECK BY | TD | DATE: | 10/10/01 |
| APPR BY | PB | DATE: | 10/10/01 |

| | | |
|--------------------|--------------------------------------------------------------------|--------------|
| PART #: 43R02-2X1X | | SHEET 1 of 1 |
| SIZE: A | ALL DIMENSIONS FOR REFERENCE ONLY DIMENSIONS ARE IN MILLIMETERS | |
| SCALE: NTS | REV: | |

D

C

B

A

| | | | | | |
|-----|------|--------|------|-----|------|
| REV | DATE | CHANGE | CHNG | CHK | APPR |
| | | | | | |

REVISIONS