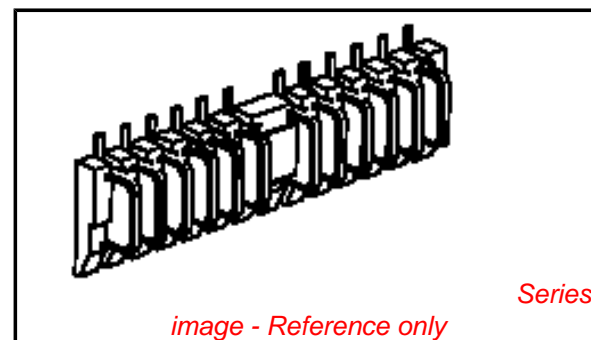


**PLEASE CHECK WWW.MOLEX.COM FOR LATEST PART INFORMATION**

**Part Number:** [0876021193](#)  
**Status:** **Active**  
**Description:** 2.50mm(.098") Pitch Panel Detachable Connector, PCB Header, Vertical, 12 Circuits, 0.5µm (20µ") Gold (Au) Selective Plating, with Locating Pegs, with Crowned Surface Contact, Tube Packaging, Lead-free

**Documents:**

[Drawing \(PDF\)](#) [RoHS Certificate of Compliance \(PDF\)](#)  
[Product Specification PS-87601-001 \(PDF\)](#)



**General**

Product Family	PCB Headers
Series	<a href="#">87602</a>
Application	Board-to-Board
Comments	Panel Detachable Crowned Terminal
Product Name	N/A

**Physical**

Breakaway	No
Circuits (Loaded)	12
Circuits (maximum)	12
Durability (mating cycles max)	10,000
First Mate / Last Break	No
Glow-Wire Compliant	No
Guide to Mating Part	No
Keying to Mating Part	None
Lock to Mating Part	None
Mated Height (in)	0.594 In
Mated Height (mm)	15.09 mm
Material - Plating Mating	Gold
Material - Plating Termination	Tin
Number of Rows	1
Orientation	Vertical
PCB Retention	None
PCB Thickness Recommended (in)	0.062 In
PCB Thickness Recommended (mm)	1.60 mm
Packaging Type	Tube
Pitch - Mating Interface (in)	0.098 In
Pitch - Mating Interface (mm)	2.50 mm
Polarized to Mating Part	Yes
Polarized to PCB	Yes
Shrouded	No
Stackable	No
Temperature Range - Operating	-40°C to +85°C
Termination Interface: Style	Surface Mount

**Electrical**

Current - Maximum per Contact	1A
Voltage - Maximum	125V

**Material Info**

**Reference - Drawing Numbers**

Product Specification	PS-87601-001
Sales Drawing	SD-87602-012

**EU RoHS**

**ELV and RoHS  
Compliant**  
**REACH SVHC**  
 Not Reviewed  
**Halogen-Free  
Status**  
 Not Reviewed

**China RoHS**



**Need more information on product  
environmental compliance?**

Email [productcompliance@molex.com](mailto:productcompliance@molex.com)  
 For a multiple part number RoHS Certificate of Compliance, [click here](#)

Please visit the [Contact Us](#) section for any non-product compliance questions.

**Search Parts in this Series**

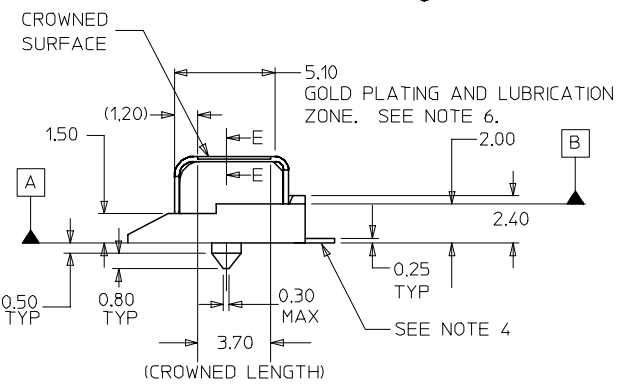
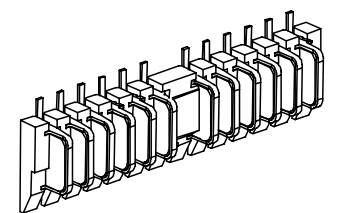
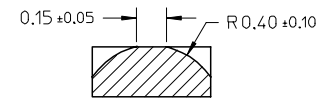
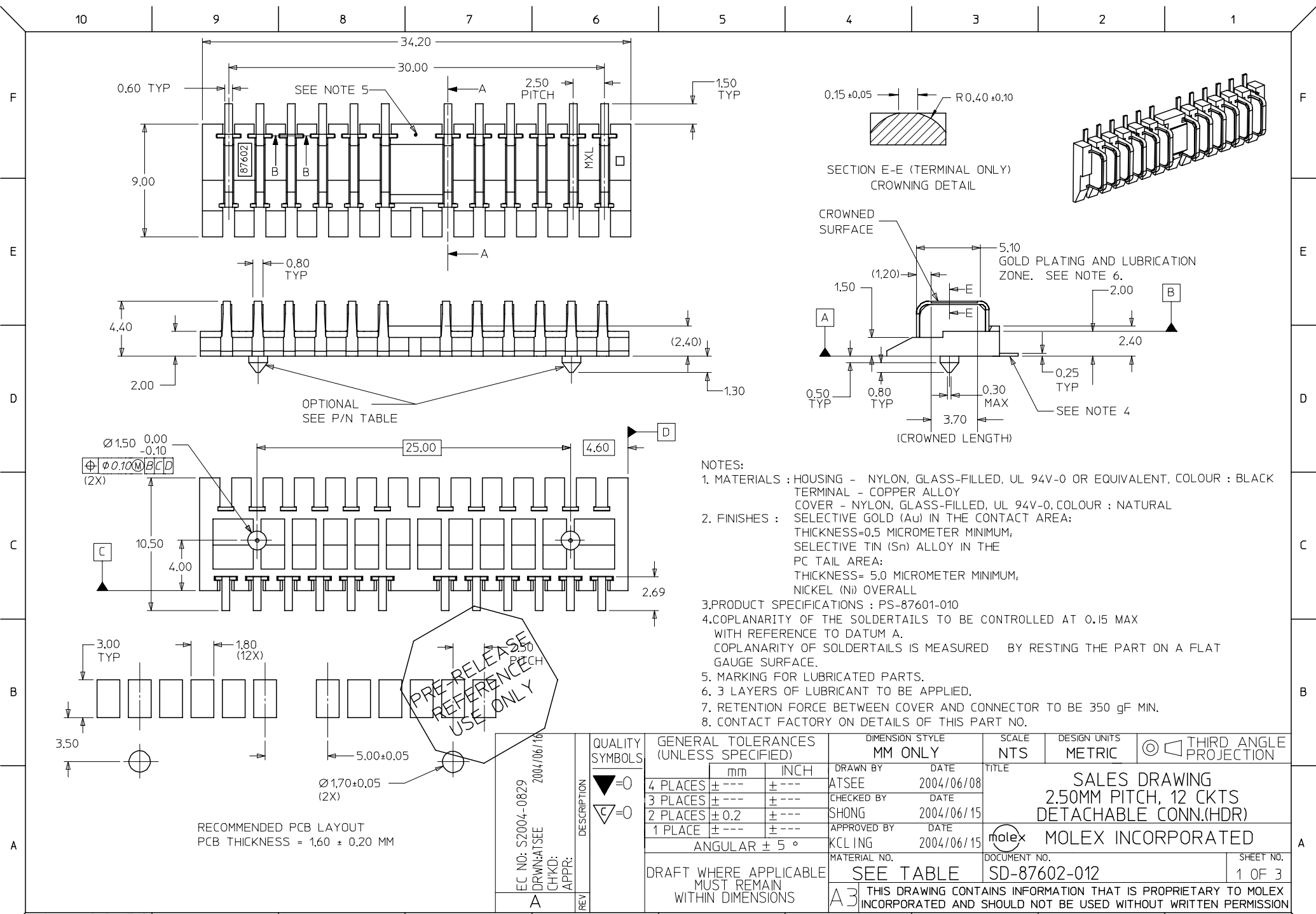
[87602Series](#)

**Mates With**

[87601 PCB Receptacle](#)

This document was generated on 04/19/2010

**PLEASE CHECK [WWW.MOLEX.COM](http://WWW.MOLEX.COM) FOR LATEST PART INFORMATION**



- NOTES:
- MATERIALS : HOUSING - NYLON, GLASS-FILLED, UL 94V-0 OR EQUIVALENT, COLOUR : BLACK  
TERMINAL - COPPER ALLOY  
COVER - NYLON, GLASS-FILLED, UL 94V-0, COLOUR : NATURAL
  - FINISHES : SELECTIVE GOLD (Au) IN THE CONTACT AREA:  
THICKNESS=0.5 MICROMETER MINIMUM,  
SELECTIVE TIN (Sn) ALLOY IN THE  
PC TAIL AREA:  
THICKNESS= 5.0 MICROMETER MINIMUM,  
NICKEL (Ni) OVERALL
  - PRODUCT SPECIFICATIONS : PS-87601-010
  - COPLANARITY OF THE SOLDER TAILS TO BE CONTROLLED AT 0.15 MAX WITH REFERENCE TO DATUM A.  
COPLANARITY OF SOLDER TAILS IS MEASURED BY RESTING THE PART ON A FLAT GAUGE SURFACE.
  - MARKING FOR LUBRICATED PARTS.
  - 3 LAYERS OF LUBRICANT TO BE APPLIED.
  - RETENTION FORCE BETWEEN COVER AND CONNECTOR TO BE 350 gF MIN.
  - CONTACT FACTORY ON DETAILS OF THIS PART NO.

RECOMMENDED PCB LAYOUT  
PCB THICKNESS = 1.60 ± 0.20 MM

PRE-RELEASE  
REFERENCE  
USE ONLY

EC NO: S2004-0829  
DRAWN: ATSEE  
CHKD:  
APPR:  
REV A

QUALITY SYMBOLS  
▽=0  
▽C=0  
DESCRIPTION

GENERAL TOLERANCES (UNLESS SPECIFIED)	
mm	INCH
4 PLACES ± ---	± ---
3 PLACES ± ---	± ---
2 PLACES ± 0.2	± ---
1 PLACE ± ---	± ---
ANGULAR ± 5 °	

DRAFT WHERE APPLICABLE  
MUST REMAIN WITHIN DIMENSIONS

DIMENSION STYLE	
MM ONLY	
DRAWN BY	DATE
ATSEE	2004/06/08
CHECKED BY	DATE
SHONG	2004/06/15
APPROVED BY	DATE
KCL ING	2004/06/15
MATERIAL NO.	DOCUMENT NO.
SEE TABLE	SD-87602-012

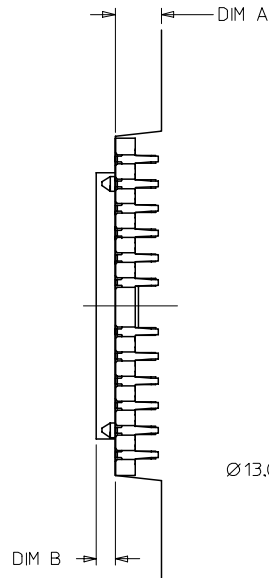
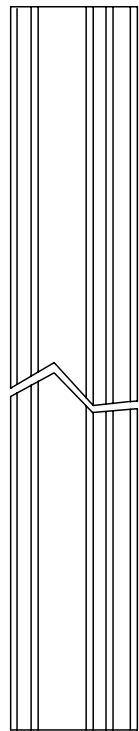
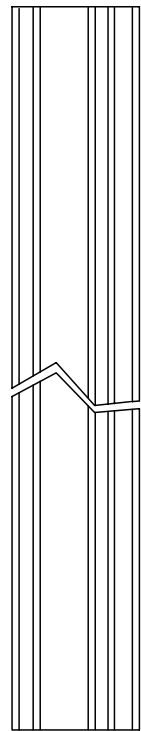
SCALE	DESIGN UNITS	THIRD ANGLE PROJECTION
NTS	METRIC	☉ □
SALES DRAWING 2.50MM PITCH, 12 CKTS DETACHABLE CONN.(HDR)		
molex MOLEX INCORPORATED		
SHEET NO.		1 OF 3

THIS DRAWING CONTAINS INFORMATION THAT IS PROPRIETARY TO MOLEX INCORPORATED AND SHOULD NOT BE USED WITHOUT WRITTEN PERMISSION

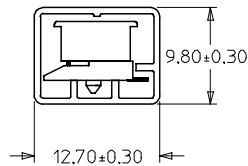
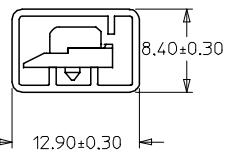
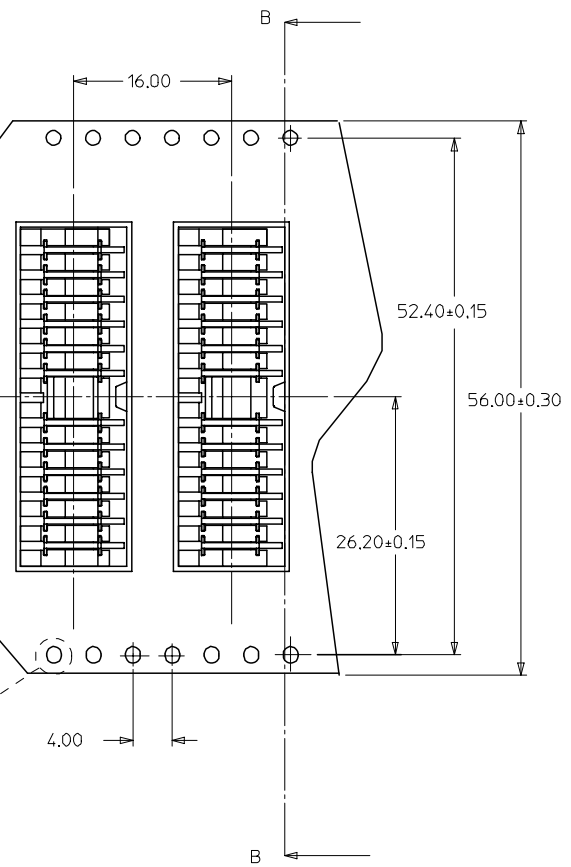
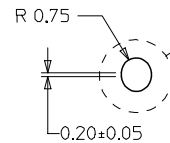
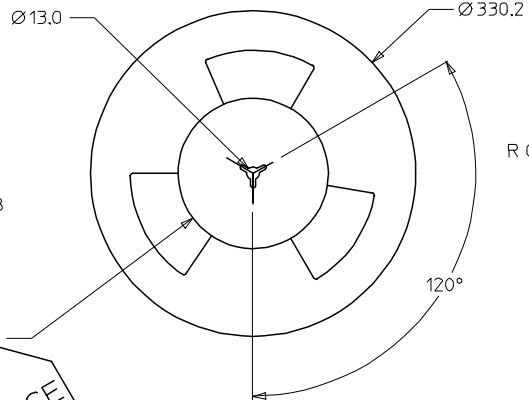
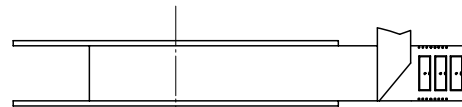
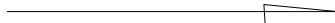
10 9 8 7 6 5 4 3 2 1

F  
E  
D  
C  
B  
A

F  
E  
D  
C  
B  
A



USER DIRECTION OF FEED



PRE-RELEASE  
REFERENCE  
USE ONLY

DOUBLE SPROCKET HOLE T/REEL ( PER EIA STANDARD )  
ONLY PART NO : 87602-1103 SHOWN

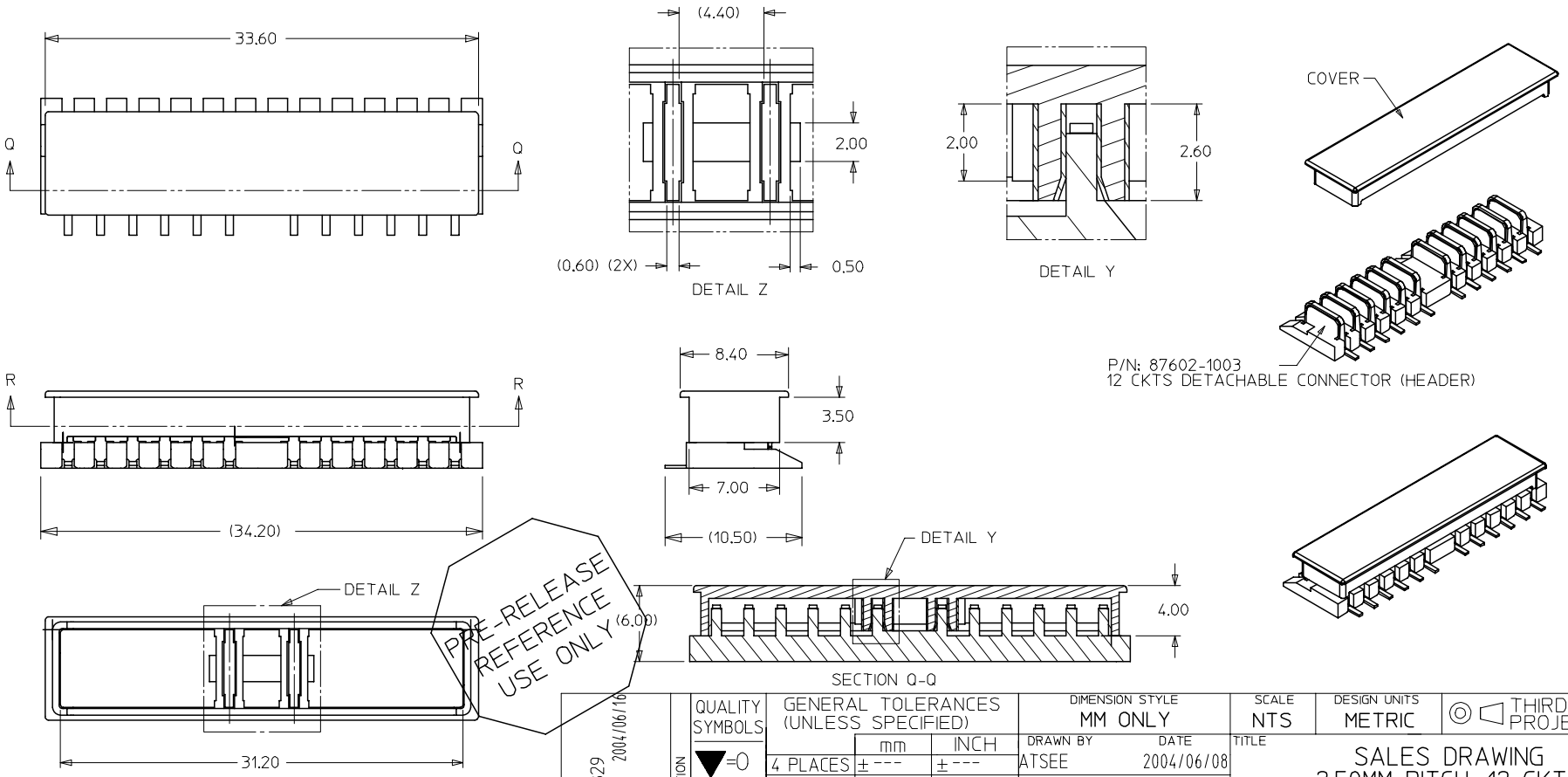
PART NO : 87602-1193

PART NO : 87602-1293

EC NO: S2004-0829 DRAWN: ATSEE CHKD: APPR:	2004/06/10 DESCRIPTION REV	QUALITY SYMBOLS ▽=0 ▽=0	GENERAL TOLERANCES (UNLESS SPECIFIED) mm      INCH	DIMENSION STYLE MM ONLY	SCALE NTS	DESIGN UNITS METRIC	THIRD ANGLE PROJECTION
		4 PLACES ± --- ± --- 3 PLACES ± --- ± --- 2 PLACES ± 0.10 ± --- 1 PLACE ± 0.5 ± --- ANGULAR ± 3 °	DRAWN BY      DATE ATSEE      2004/06/08 CHECKED BY      DATE SHONG      2004/06/15 APPROVED BY      DATE KCL ING      2004/06/15	TITLE SALES DRAWING 2.50MM PITCH, 12 CKTS DETACHABLE CONN. (HDR)	MOLEX INCORPORATED	MATERIAL NO. SEE TABLE	DOCUMENT NO. SD-87602-012
DRAFT WHERE APPLICABLE MUST REMAIN WITHIN DIMENSIONS			THIS DRAWING CONTAINS INFORMATION THAT IS PROPRIETARY TO MOLEX INCORPORATED AND SHOULD NOT BE USED WITHOUT WRITTEN PERMISSION				

9 8 7 6 5 4 3 2 1

LUBRICATION AT CONTACT	PLASTIC PEG	MOLEX P/N WITHOUT CAP IN EMBOSSED TAPE PACKAGING			MOLEX P/N WITH CAP IN EMBOSSED TAPE PACKAGING			MOLEX P/N WITHOUT CAP IN TUBE PACKAGING	MOLEX P/N WITH CAP IN TUBE PACKAGING
			DIM A	DIM B		DIM A	DIM B		
NO	NO	87602-1003	4.70	1.90	SEE NOTE 8	N/A	N/A	87602-1093	SEE NOTE 8
YES	NO	87602-1004	4.70	1.90	SEE NOTE 8	N/A	N/A	87602-1094	SEE NOTE 8
NO	YES	87602-1103	4.70	1.90	87602-1203	6.80	1.60	87602-1193	87602-1293
YES	YES	87602-1104	4.70	1.90	87602-1204	6.80	1.60	87602-1194	87602-1294



PRE-RELEASE REFERENCE USE ONLY

P/N: 87602-1003  
12 CKTS DETACHABLE CONNECTOR (HEADER)

EC NO: S2004-0829 DRAWN/ATSEE CHKD: APPR:	2004/06/16 DESCRIPTION REV	QUALITY SYMBOLS ▽=0 ▽=0	GENERAL TOLERANCES (UNLESS SPECIFIED) 4 PLACES ± --- ± --- 3 PLACES ± --- ± --- 2 PLACES ± 0.2 ± --- 1 PLACE ± --- ± --- ANGULAR ± 5 °	DIMENSION STYLE MM ONLY	SCALE NTS	DESIGN UNITS METRIC	THIRD ANGLE PROJECTION
		DRAFT WHERE APPLICABLE MUST REMAIN WITHIN DIMENSIONS	DRAWN BY ATSEE CHECKED BY SHONG APPROVED BY KCL ING MATERIAL NO. SEE TABLE	DATE 2004/06/08 DATE 2004/06/15 DATE 2004/06/15	TITLE SALES DRAWING 2.50MM PITCH, 12 CKTS DETACHABLE CONN. (HDR)	MOLEX INCORPORATED	DOCUMENT NO. SD-87602-012