

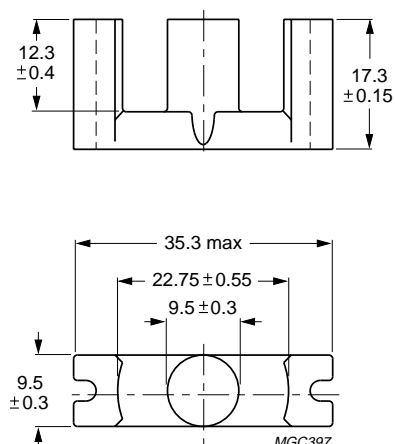
## EC cores and accessories

## EC35

## CORE SETS

## Effective core parameters

SYMBOL	PARAMETER	VALUE	UNIT
$\Sigma(I/A)$	core factor (C1)	0.918	mm <sup>-1</sup>
$V_e$	effective volume	6530	mm <sup>3</sup>
$l_e$	effective length	77.4	mm
$A_e$	effective area	84.3	mm <sup>2</sup>
$A_{min}$	minimum area	71	mm <sup>2</sup>
$m$	mass of core half	≈19	g



Dimensions in mm.

Fig.1 EC35 core half.

## Core halves

 $A_L$  measured in combination with an non-gapped core half, unless stated otherwise.

GRADE	$A_L$ (nH)	$\mu_e$	AIR GAP ( $\mu\text{m}$ )	TYPE NUMBER
3C81 <sup>sup</sup>	100 ±3% <sup>(1)</sup>	≈73	≈1470	EC35-3C81-E100
	160 ±3% <sup>(1)</sup>	≈117	≈820	EC35-3C81-E160
	250 ±3%	≈184	≈470	EC35-3C81-A250
	315 ±5%	≈231	≈350	EC35-3C81-A315
	400 ±10%	≈290	≈260	EC35-3C81-A400
	≥2250	≥1640	≈0	EC35-3C81
3C85 <sup>sup</sup>	100 ±3% <sup>(1)</sup>	≈73	≈1470	EC35-3C85-E100
	160 ±3% <sup>(1)</sup>	≈117	≈820	EC35-3C85-E160
	250 ±3%	≈184	≈470	EC35-3C85-A250
	315 ±5%	≈231	≈350	EC35-3C85-A315
	400 ±10%	≈290	≈260	EC35-3C85-A400
	2100 ±25%	≈1530	≈0	EC35-3C85

## Note

1. Measured in combination with an equal gapped core half (symmetrical air gap).

## Properties of core sets under power conditions

GRADE	B (mT) at	CORE LOSS (W) at	
	H = 250 A/m; f = 25 kHz; T = 100 °C	f = 25 kHz; $\dot{B}$ = 200 mT; T = 100 °C	f = 100 kHz; $\dot{B}$ = 100 mT; T = 100 °C
3C81	≥320	≤1.4	—
3C85	≥320	≤1.0	≤1.2

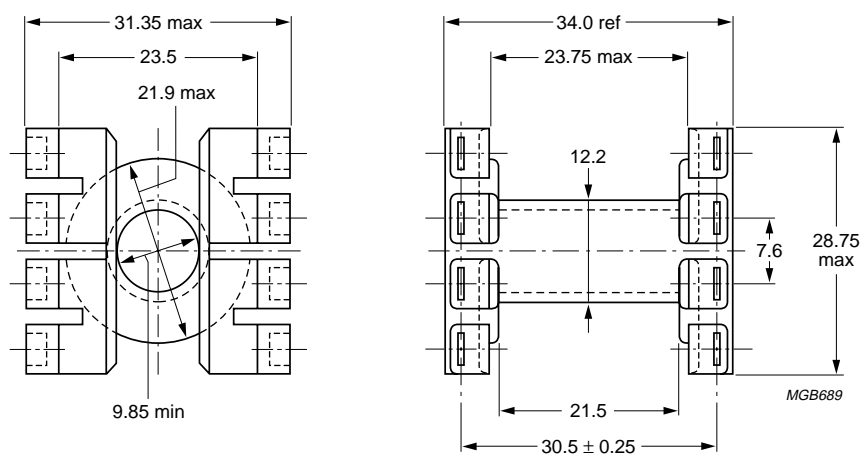
## EC cores and accessories

EC35

## COIL FORMERS

## General data 8-slots EC35 coil former for insertable pins

PARAMETER	SPECIFICATION
Coil former material	polyamide (PA6.6), glass-reinforced, flame retardant in accordance with "UL 94V-0"; UL file number E44716(M)
Maximum operating temperature	105 °C



Dimensions in mm.

Fig.2 EC35 coil former; 8-slots.

## Winding data 8-slots EC35 coil former for insertable pins

Coil formers with inserted pins are available on request.

NUMBER OF SECTIONS	MINIMUM WINDING AREA (mm <sup>2</sup> )	NOMINAL WINDING WIDTH (mm)	AVERAGE LENGTH OF TURN (mm)	TYPE NUMBER
1	97.1	21.5	53.1	CP-EC35-1S

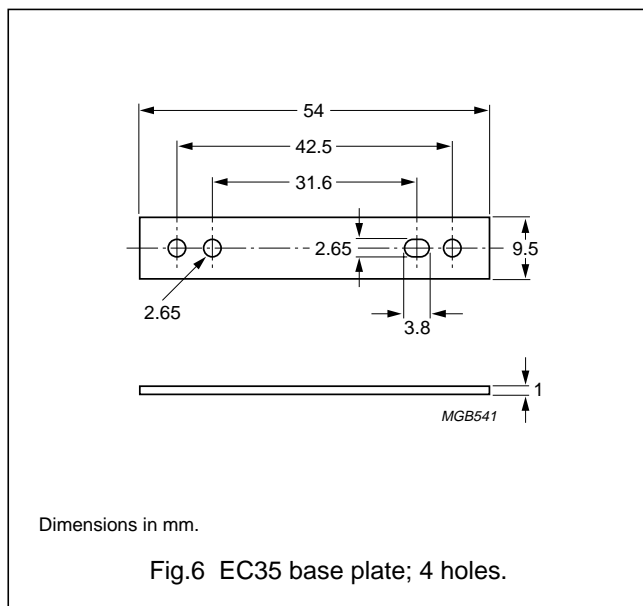
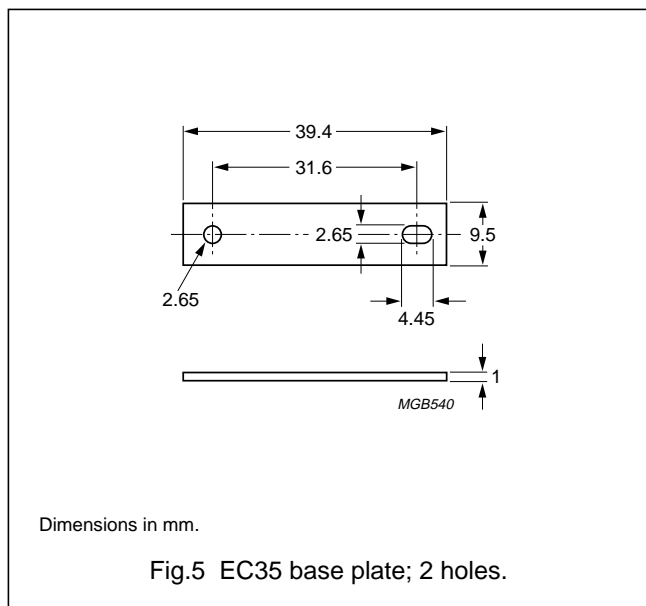
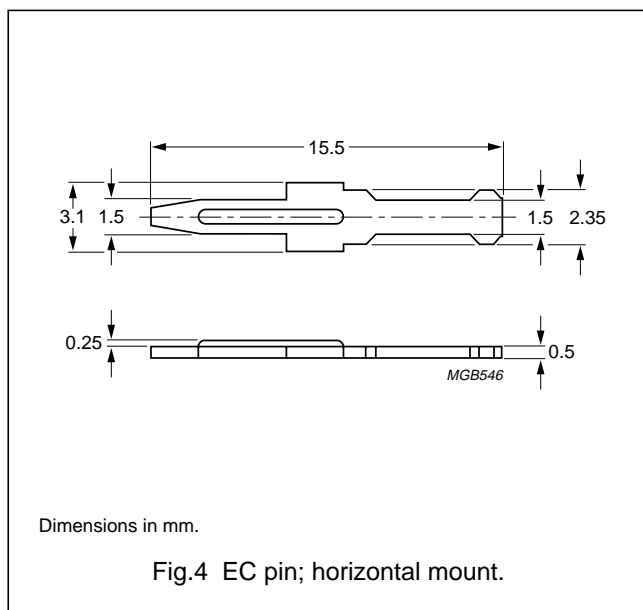
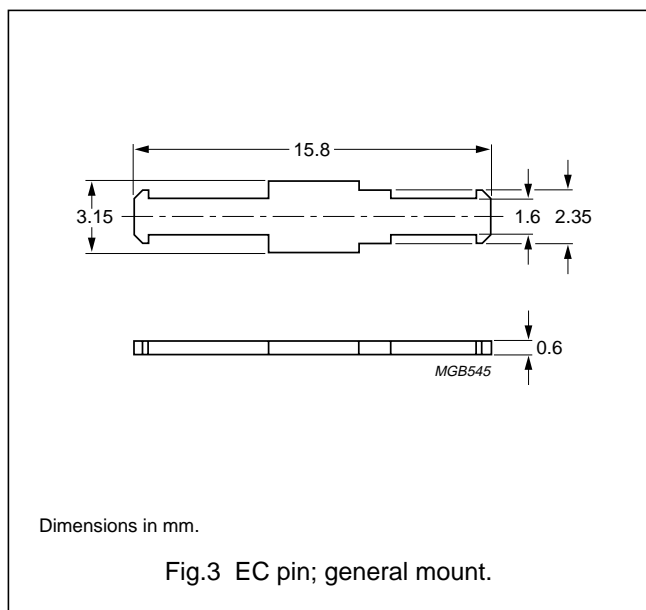
# EC cores and accessories

# EC35

## MOUNTING PARTS

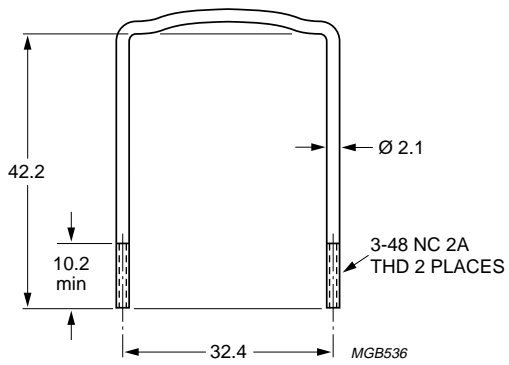
### General data and ordering information

ITEM	REMARKS	MOUNT	FIGURE	TYPE NUMBER
Insertable pins	solderability: "IEC 68-2-20", Part 2, Test Ta, method 1; material: copper-zinc alloy (CuZn), tin-lead alloy (SnPb) plated	general	3	PIN-EC
		horizontal	4	PIN/H-EC
Base plate 2-holes	aluminium		5	BPL2-EC35
Base plate 4-holes	aluminium		6	BPL4-EC35
Clamp	copper-zinc alloy (CuZn)		7	CLM/U-EC35



## EC cores and accessories

## EC35



Dimensions in mm.

Fig.7 EC35 clamp.