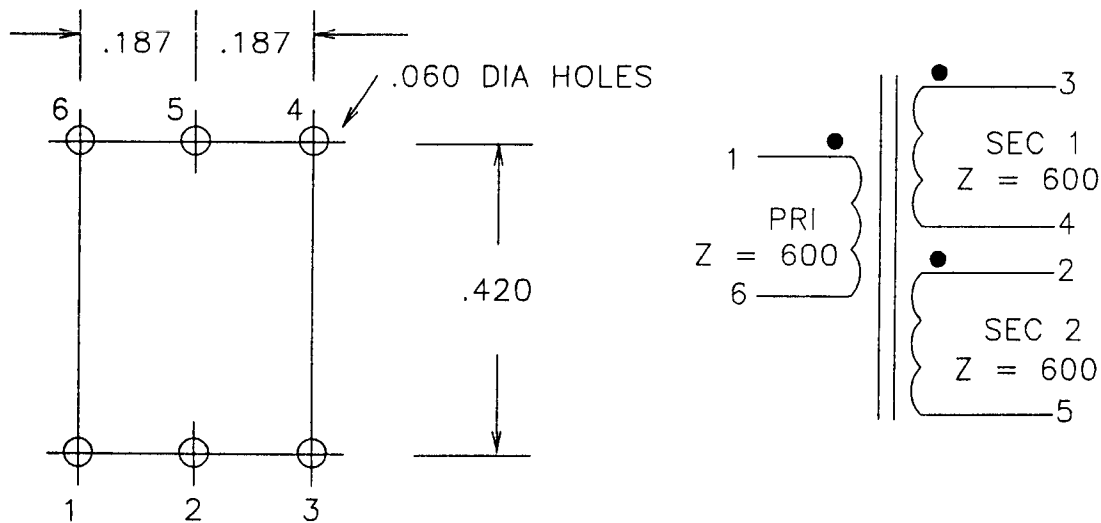
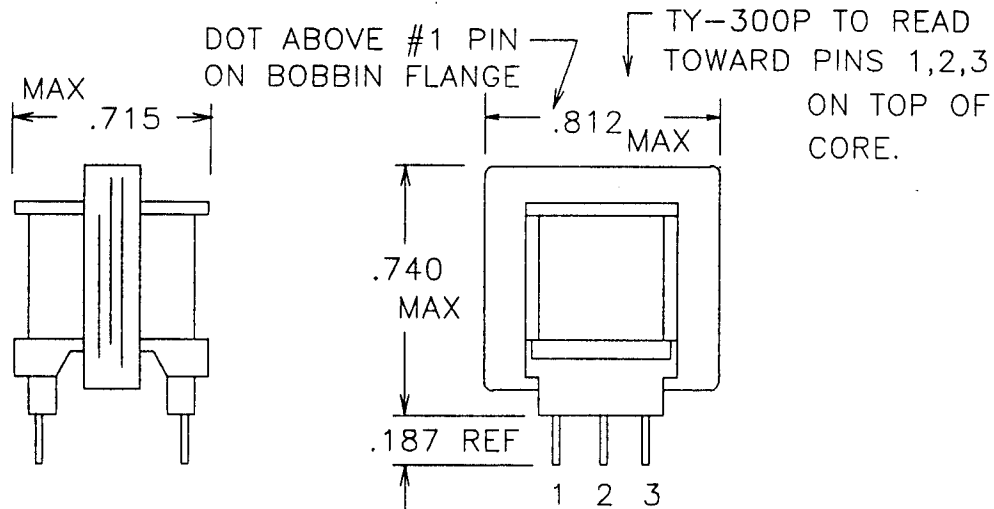


TOLERANCE UNLESS SPECIFIED = .XXX = +/- .005 .XX = +/- .015 FRACTIONS = +/- .032

TY-300P.DC2



PRODUCTION TESTS

TURNS RATIO = 100%	
DC RESISTANCE IN OHMS	1-6 = 57 NOM
	2-5 = 42 NOM
	3-4 = 42 NOM

APPLY = 2V, 400 HZ, 1-6
INDUCTANCE: 2.5 HY MIN

HIPOT = 1500V PRI TO SEC'S, CORE
500V SEC TO SEC
500V SEC'S TO CORE

IMPREGNATION NOTES = PREHEAT 2 HRS
PINS TO BE FREE OF IMPREGNATION

FINAL ASSEMBLY NOTES

MagneTek

METHOD 1 X 1

MARKING "TY-300P" ON TOP OF CORE
DATE & SITE CODE ON SIDE OF CORE

PART NO. TY-300P