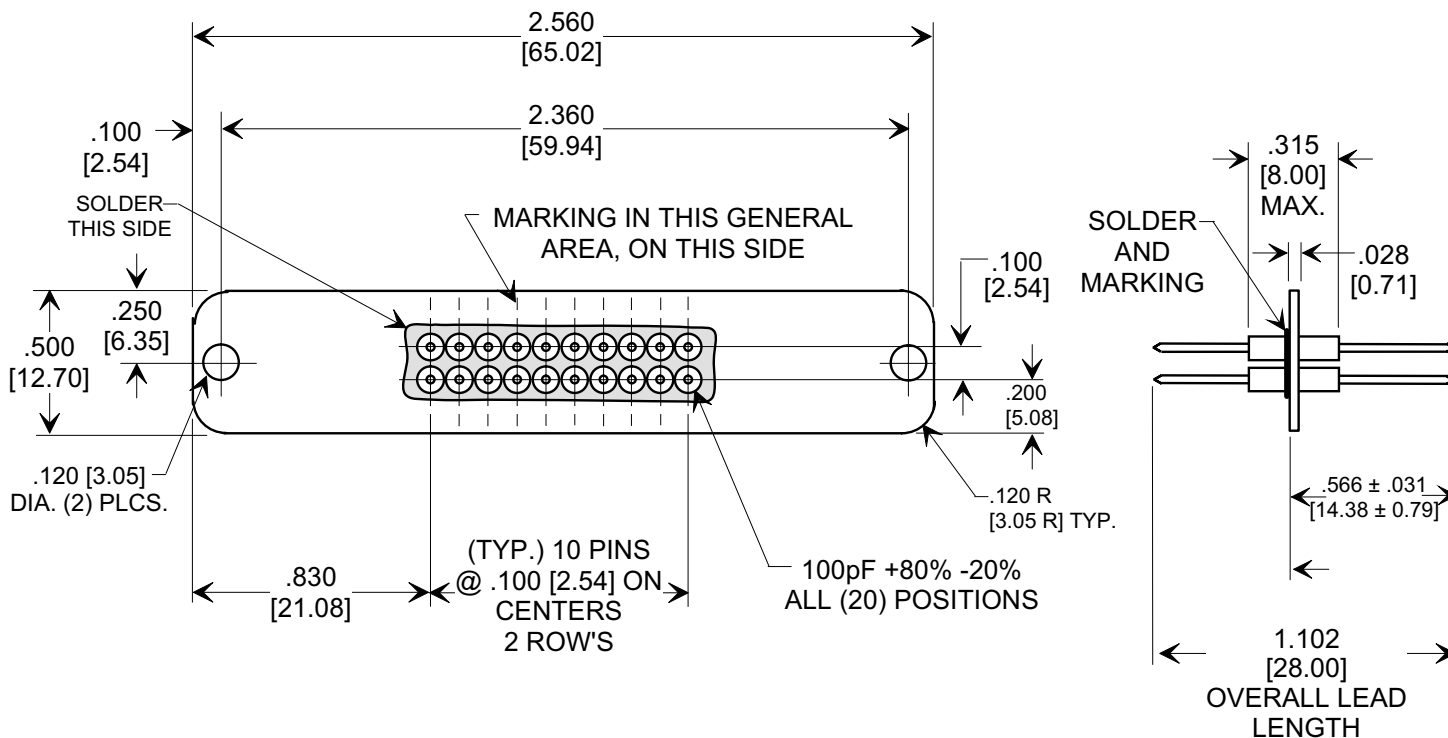
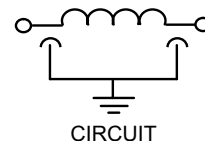
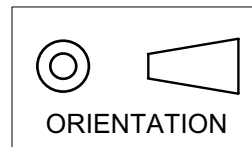


MARKETING SALES DRAWING
DIMENSIONS IN INCHES - DO NOT SCALE THIS DRAWING
DIMENSIONS IN METRIC - []

Electrical Testing
per Tusonix standard
test plans and Mil-Std-202
Test Methods.



NOTES:

1. PLATE: $.028 \pm .002$ [0.71 \pm 0.05], COPPER ALLOY, MATTE TIN PLATED.
LEAD: $.025 \pm .002$ [0.63 \pm 0.05] DIA, COPPER ALLOY, GOLD PLATED.
2. TUSONIX CATALOG CODE DESCRIPTION: 7922-1010-0A, REFERENCE
3. MARKING: TUSONIX TRADEMARK, PRODUCTION PART NO. AND (4) DIGIT DATE CODE (YYWW).

80/180	100 VDC	5 A	10 G	250 VDC	2	9	22	28
CAP. (pF)	125° WORKING VOLTAGE	CURRENT V.D.C.	IR MIN.	DWV	100 MHz	200 MHz	500 MHz	1 GHz
TYPICAL NO LOAD INSERTION LOSS (dB) AT 25°C PER MIL-STD-220								

X-2015 Rev-0 REVISION RECORD Original Release C.O. 20050606-3-03	0		--TOLERANCES-- Unless Otherwise Specified		Title 20 POSITION FILTER ASSEMBLY	
	DECIMAL \pm .010 [0.25]		ANGLES \pm 5°		Drawn S.M. 06-08-05	Scale 1.5 X
	TUSONIX TUCSON, ARIZONA		Approved B.Mc. 06-08-05		A	
	7920-018		Title		Scale	