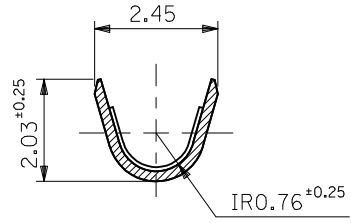


SECT. A-A  
(SCALE 10 : 1)



SECT. B-B  
(SCALE 10 : 1)

銅 (0.5 $\mu\text{m}$ MIN.) 下地 錫 (0.9 $\mu\text{m}$ MIN.) TIN (0.9 $\mu\text{m}$ MIN.) OVER COPPER (0.5 $\mu\text{m}$ MIN.)	39-00-0327	I560TL	バラ端子 LOOSE
メッキ PLATING	EDP.NO.	ENG.NO.	連鎖端子 CHAIN 形状 FORM
MODEL NO.		I560*	

注記 NOTES:

1. 一般公差 :  $\pm 0.4$   
GENERAL TOLERANCES:  $\pm 0.4$

材料 MATERIAL 黄銅 BRASS 0.2 t
仕上げ FINISH
適用電線範囲 WIRE RANGE AWG#18-#24
被覆外径 INS. RANGE $\phi 1.5 \sim 3.1$

REVISED EC NO: J2009-1263 DRWN: MAKURAA 2008/12/16 CHKD: T. HARUYAMA 2008/12/16 APPR: NUKITA 2009/01/15	DESCRIPTION	GENERAL TOLERANCES (UNLESS SPECIFIED)
REV	10 UNDER	$\pm \text{---}$
	10 OVER 30 UNDER	$\pm \text{---}$
	30 OVER	$\pm \text{---}$
	ANGULAR	$\pm \text{---}^\circ$
	DRAFT WHERE APPLICABLE MUST REMAIN WITHIN DIMENSIONS	

DIMENSION STYLE MM ONLY	SCALE 5:1	DESIGN UNITS METRIC	THIRD ANGLE PROJECTION
DRAWN BY H. HASEGAWA	DATE '93/7/9	TITLE 0.62 DIA CRIMP MALE TERM	
CHECKED BY H. HIRAMOTO	DATE '93/7/9	MOLEX INCORPORATED	
APPROVED BY M. FUKUSHIMA	DATE '93/7/9	DOCUMENT NO. SD-1560-001	SHEET NO. 1 OF 1
THIS DRAWING CONTAINS INFORMATION THAT IS PROPRIETARY TO MOLEX INCORPORATED AND SHOULD NOT BE USED WITHOUT WRITTEN PERMISSION			