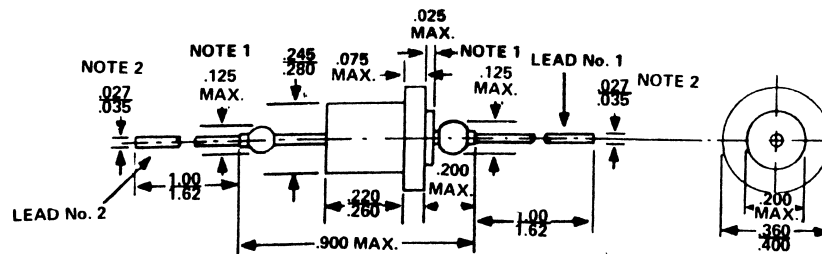


1N442
Silicon Rectifier

V(RRM)(V) Rep.Pk.Rev. Voltage=300
I(RM) Max.(A) Reverse Current=1.0u
@V(R) (V)(Test Condition)=300
I(FSM) Max.(A) Pk.Fwd.Sur.Cur.=15
V(FM) Max.(V) Forward Voltage=1.5
@I(FM) (A) (Test Condition)=.30
@Temp. (°C) (Test Condition)=25
I(O) Max.(A) Output Current=300m
@Temp (°C) (Test Condition)=100
Package=DO-2
Military=N



NOTES:

1. DIMENSION TO ALLOW FOR PINCH OR SEAL DEFORMATION ANYWHERE ALONG TUBULATION (OPTIONAL).
2. DIAMETER TO BE CONTROLLED FROM FREE END OF LEAD TO WITHIN .188" (4.78 MM) FROM THE POINT OF ATTACHMENT TO THE BODY. WITHIN THE .188" (4.78 MM) DIMENSION, THE DIAMETER MAY VARY TO ALLOW FOR LEAD FINISHES AND IRREGULARITIES.

