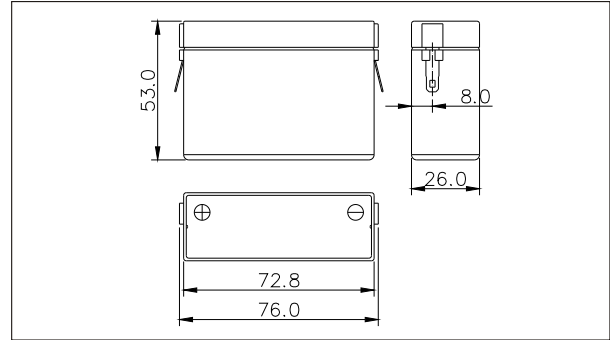




SW425(4V2.5AH)



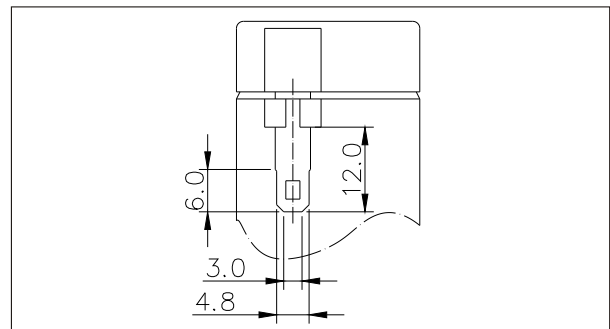
● Outer dimensions (mm)



● Specifications

Nominal Voltage		4V
Rated capacity (20 hour rate)		2.5Ah
Dimensions	Total Height	53mm (2.09inches)
	Height	53mm (2.09inches)
	Length	76mm (2.99inches)
	Width	26mm (1.02inches)
Weight Approx		0.25Kg (0.55lbs)

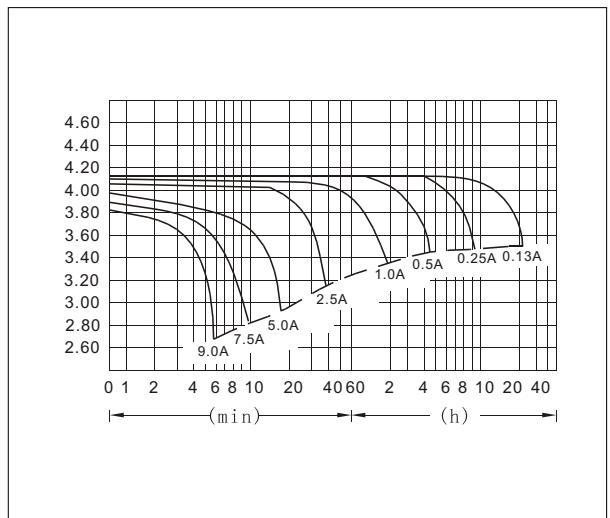
● Terminal Type (mm)



● Characteristics

Capacity 25°C(77°F)	20 hour rate(0.13A)	2.50 AH
	10 hour rate(0.23A)	2.30AH
	5 hour rate(0.43A)	2.13 AH
	1 hour rate(1.50A)	1.50 AH
	1.5 hour discharge to 5.25 V	1.1 A
Internal Resistance Full charged Battery at 25°C(77°F)		25 mΩ
Capacity affected by Temperature (20hour rate)	40°C(104°F)	102%
	25°C(77°F)	100%
	0°C(32°F)	85%
	-15°C(5°F)	65%
Self-Discharge at 25°C(77°F)	Capacity after 3 month storage	91%
	Capacity after 6 month storage	82%
	Capacity after 12 month storage	64%
Terminal		T89
Charge (constant Voltage)	Cycle	Initial Charging Current less than 1.0A Voltage 4.8-4.9V
	Float	Voltage 4.5-4.6V

● Discharge Curves 25°C(77°F)



Constant Current(Amp) and Constant Power(Watt) Discharge Table at 25°C(77°F)

Time	5min	10min	15min	30min	1h	2h	3h	4h	5h	8h	10h	20h
3.20V	A	9.0	5.9	4.4	2.9	1.5	0.88	0.64	0.52	0.44	0.29	0.13
	W	31	21	16	10.3	5.4	3.2	2.39	1.94	1.66	1.11	0.50
3.40V	A	8.3	5.6	4.0	2.7	1.4	0.84	0.63	0.50	0.43	0.28	0.13
	W	30	21	15	10.2	5.3	3.2	2.41	1.94	1.67	1.11	0.49
3.50V	A	7.5	5.3	3.8	2.6	1.4	0.82	0.61	0.48	0.43	0.28	0.13
	W	28	20	14	10.1	5.2	3.2	2.39	1.85	1.66	1.10	0.49
3.60V	A	7.2	5.0	3.5	2.6	1.3	0.80	0.60	0.47	0.41	0.27	0.12
	W	27	19	13	9.9	5.1	3.1	2.38	1.84	1.60	1.08	0.48
3.70V	A	6.7	4.8	3.3	2.5	1.3	0.78	0.57	0.46	0.39	0.27	0.12
	W	25	18	13	9.8	5.0	3.1	2.27	1.82	1.55	1.07	0.48