

# Surge Absorber (Spark Gap)



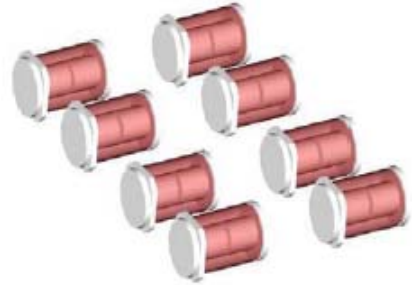
MSA Series

MERITEK

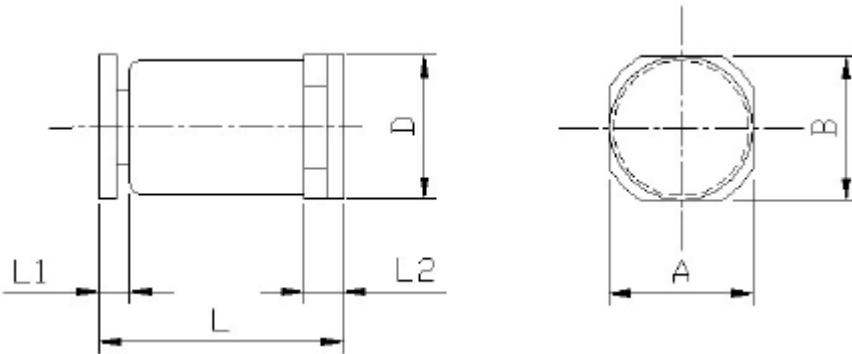
## MSA1-M(S) SERIES

### FEATURES

- Response time < 1ns
- MSA1 Surge Current is 3000A
- Package
- Stable and very Small electrostatic capacitance (< 0.8pf) and great isolation (> 100M)
- Standard protection required by US UL497A and UL497B
- Small size



### DIMENSION



Item	MSA1
L	6.0±0.5
D	φ3.2±0.2
A	3.2±0.2
B	3.2±0.2
L1	0.8±0.3
L2	0.6±0.3

### ELECTRICAL CHARACTERISTICS

PART NUMBER	DC Spark-Over Voltage	Minimum Insulation Resistance		Maximum Capacitance (1KHz-6V <sub>MAX</sub> )	Surge current capacity	Surge Life Test	Type
	V <sub>s</sub> (V)	Test Voltage (V)	I <sub>ohm</sub> (MΩ)	C (pF)	8/20μs (A)	8/20μs, 100A	
MSA1XX00702-MS	140	50	100	0.8	3000	250 times	S
MSA1XX01002-MS	200	100	100	0.8			
MSA1XX01102-MS	220	100	100	0.8			
MSA1XX01502-MS	300	100	100	0.8			
MSA1XX02002-MS	400	250	100	0.8			
MSA1XX02502-MS	500	250	100	0.8			
MSA1XX03002-MS	600	250	100	0.8			
MSA1XX03502-MS	700	500	100	0.8			
MSA1XX05002-MS	1000	500	100	0.8			
MSA1XX07502-MS	1500	500	100	0.8			

Note: V<sub>s</sub>±XX%

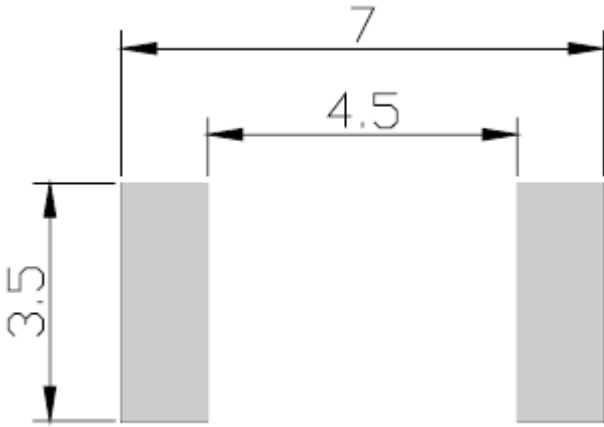
# Surge Absorber (Spark Gap)



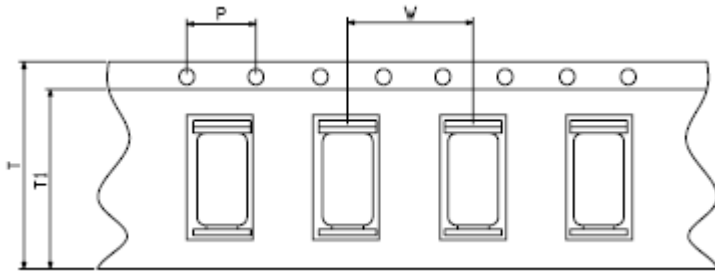
MSA Series

MERITEK

## RECOMMENDED LAND PATTERN

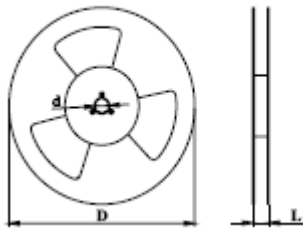


## RADIAL TAPING PACKAGING



Symbol	Dimension (mm)
W	8.0±1.0
T	16.0±0.5
T1	13.5±0.5
P	4.0±0.5

## INNER BOX DRAWING



Item	Dimension	Quantity
D	300mm	2000 PCS
d	13mm	
L	19mm	