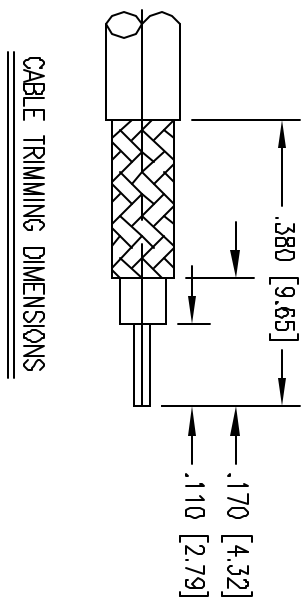
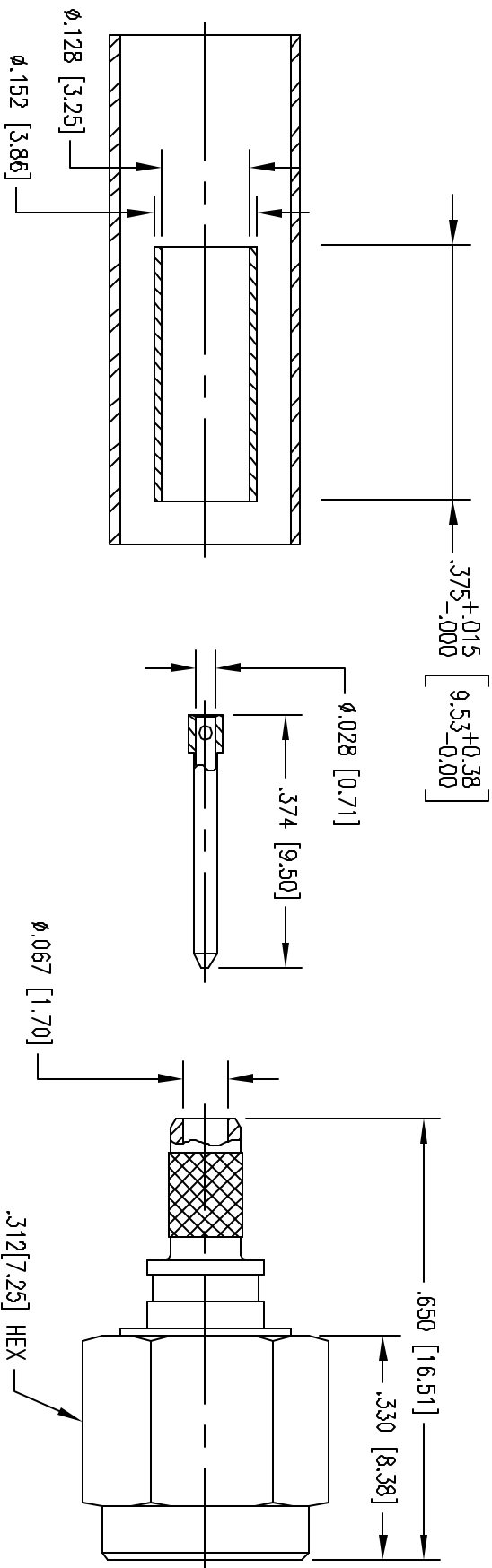


REV	DESCRIPTION	DATE	BY
F	ECR 8081	4/20/04	DRW



- NOTES:
1. MATERIALS:
 RETAINING RING: BERYLLIUM COPPER PER ASTM B194
 FERRULE: COPPER ALLOY
 ALL OTHER METAL PARTS: BRASS PER ASTM B16
 INSULATOR: TEFLON PER ASTM D1710
 GASKET: SILICONE RUBBER PER ZZ-R-765
 HEAT SHRINK TUBING: POLYOLEFIN
 2. FINISH:
 BODY: .000015 MIN. GOLD PER ASTM B488 OVER
 .000050 MIN. NICKEL PER AMS-QQ-N-290
 CENTER CONTACT: .000030 MIN. GOLD PER ASTM B488 OVER
 .000050 MIN. NICKEL PER AMS-QQ-N-290
 COUPLING NUT AND FERRULE: .000005 MIN. GOLD PER ASTM B488 OVER
 .000050 MIN. NICKEL PER AMS-QQ-N-290
 3. DESIGNED FOR USE WITH RG-316 CABLE OR EQUIVALENT.
 4. FOR CABLING PROCEDURES USE CAP 9-04 WITH TRIMMING DIMENSIONS SHOWN.
 5. CRIMP FERRULE USING .128 HEX DIE.

PER ASME Y14.5M-1994 UNLESS OTHERWISE SPECIFIED DIMENSIONS ARE IN INCHES (IN)		DATE: 9/11/03 DWE	
CUSTOMER DRAWING		DATE: 9/11/03 DWE	
PER ASME Y14.5M-1994 UNLESS OTHERWISE SPECIFIED DIMENSIONS ARE IN INCHES (IN)		DATE: 9/11/03 DWE	
CUSTOMER DRAWING		DATE: 9/11/03 DWE	
WINCHESTER ELECTRONICS 60 Barnes Industrial Road North Wallingford, CT 06492		DATE: 9/11/03 DWE	
SMA STRAIGHT PLUG		DATE: 9/11/03 DWE	
DRAWN: JED CHECKED: DWE APPROVED:	DATE: 9/11/03 DWE	DATE: 9/11/03 DWE	DATE: 9/11/03 DWE
SD350-900-0630H		SHEET: 1	OF: 1
REV: F		REV: F	