

PLEASE CHECK WWW.MOLEX.COM FOR LATEST PART INFORMATION

Part Number: [0192670249](#)
Status: **Active**
Overview: permafit
Description: Perma-Fit™ Thin-Wall multi Purpose Heat Shrink Tubing, 12.70mm (.500") Inside Diameter (As Supplied), Black, 30.48m (100.0') Length

Documents:

[Drawing \(PDF\)](#) [RoHS Certificate of Compliance \(PDF\)](#)

Agency Certification

CSA 234945
 UL E159226

General

Product Family Heat Shrink Tubing
 Series [19267](#)
 Overview [permafit](#)
 Product Name Perma-Fit™

Physical

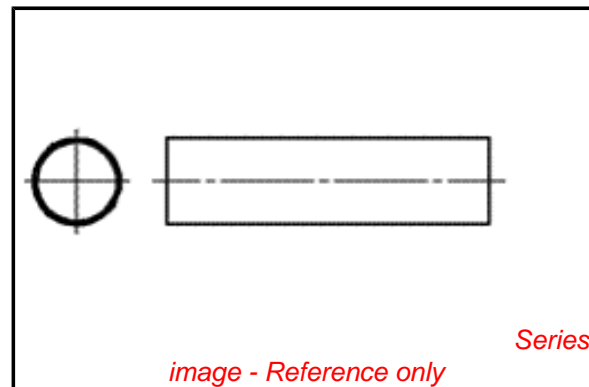
Packaging Type Reel
 Temperature Range - Operating -55°C to +135°C

Material Info

Old Part Number PF-1/2-5BK

Reference - Drawing Numbers

Sales Drawing SD-19267-001



EU RoHS

ELV and RoHS Compliant
REACH SVHC
 Not Reviewed
Halogen-Free Status
Not Reviewed

China RoHS



Need more information on product environmental compliance?

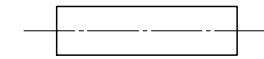
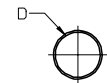
Email productcompliance@molex.com
 For a multiple part number RoHS Certificate of Compliance, [click here](#)

Please visit the [Contact Us](#) section for any non-product compliance questions.

Search Parts in this Series
[19267Series](#)

| | 13 | | 12 | | 11 | | 10 | | 9 | | 8 | | 7 | | 6 | | 5 | | 4 | | 3 | | 2 | | 1 | | |
|---|-----------------|--------------------|-----------------|--------------------|-----------------|--------------------|-----------------|--------------------|-----------------|--------------------|-----------------|--------------------|-----------------|--------------|--------------|-------------|---|-------|---|--|---|--|---|--|---|--|--|
| | BLACK | | WHITE | | RED | | BLUE | | CLEAR | | YELLOW | | MIN | MAX | RECOVERED | LENGTH | | | | | | | | | | | |
| | MATERIAL NUMBER | ENGINEERING NUMBER | MATERIAL NUMBER | ENGINEERING NUMBER | MATERIAL NUMBER | ENGINEERING NUMBER | MATERIAL NUMBER | ENGINEERING NUMBER | MATERIAL NUMBER | ENGINEERING NUMBER | MATERIAL NUMBER | ENGINEERING NUMBER | EXPANDED ID "D" | RECOVERED ID | WALL THK REF | FEET/METERS | | | | | | | | | | | |
| J | 192670015 | PF-3/64-1BK | 192670016 | PF-3/64-1WT | 192670017 | PF-3/64-1RD | 192670018 | PF-3/64-1BL | 192670019 | PF-3/64-1CL | 192670020 | PF-3/64-1YL | .046/1.17 | .023/0.58 | .018/0.46 | | | | | | | | | | | | |
| | 192670045 | PF-1/16-1BK | 192670046 | PF-1/16-1WT | 192670047 | PF-1/16-1RD | 192670048 | PF-1/16-1BL | 192670049 | PF-1/16-1CL | 192670050 | PF-1/16-1YL | .063/1.60 | .031/0.79 | .018/0.46 | | | | | | | | | | | | |
| | 192670075 | PF-3/32-1BK | 192670076 | PF-3/32-1WT | 192670077 | PF-3/32-1RD | 192670078 | PF-3/32-1BL | 192670079 | PF-3/32-1CL | 192670080 | PF-3/32-1YL | .093/2.36 | .046/1.17 | .020/0.51 | | | | | | | | | | | | |
| | 192670105 | PF-1/8-1BK | 192670106 | PF-1/8-1WT | 192670107 | PF-1/8-1RD | 192670108 | PF-1/8-1BL | 192670109 | PF-1/8-1CL | 192670110 | PF-1/8-1YL | .125/3.18 | .062/1.57 | .020/0.51 | | | | | | | | | | | | |
| | 192670135 | PF-3/16-1BK | 192670136 | PF-3/16-1WT | 192670137 | PF-3/16-1RD | 192670138 | PF-3/16-1BL | 192670139 | PF-3/16-1CL | 192670140 | PF-3/16-1YL | .187/4.75 | .093/2.36 | .020/0.51 | | | | | | | | | | | | |
| I | 192670165 | PF-1/4-1BK | 192670166 | PF-1/4-1WT | 192670167 | PF-1/4-1RD | 192670168 | PF-1/4-1BL | 192670169 | PF-1/4-1CL | 192670170 | PF-1/4-1YL | .250/6.35 | .125/3.18 | .025/0.64 | | | | | | | | | | | | |
| | 192670195 | PF-3/8-1BK | 192670196 | PF-3/8-1WT | 192670197 | PF-3/8-1RD | 192670198 | PF-3/8-1BL | 192670199 | PF-3/8-1CL | 192670200 | PF-3/8-1YL | .375/9.53 | .187/4.75 | .025/0.64 | 4.0/1.2 | | | | | | | | | | | |
| | 192670225 | PF-1/2-1BK | 192670226 | PF-1/2-1WT | 192670227 | PF-1/2-1RD | 192670228 | PF-1/2-1BL | 192670229 | PF-1/2-1CL | 192670230 | PF-1/2-1YL | .500/12.70 | .250/6.35 | .025/0.64 | | | | | | | | | | | | |
| | 192670255 | PF-3/4-1BK | 192670256 | PF-3/4-1WT | 192670257 | PF-3/4-1RD | 192670258 | PF-3/4-1BL | 192670259 | PF-3/4-1CL | 192670260 | PF-3/4-1YL | .750/19.05 | .375/9.53 | .030/0.76 | | | | | | | | | | | | |
| | 192670285 | PF-1-1BK | 192670286 | PF-1-1WT | 192670287 | PF-1-1RD | 192670288 | PF-1-1BL | 192670289 | PF-1-1CL | 192670290 | PF-1-1YL | 1.000/25.40 | .500/12.70 | .035/0.89 | | | | | | | | | | | | |
| | 192670315 | PF-1-1/2-1BK | 192670316 | PF-1-1/2-1WT | 192670317 | PF-1-1/2-1RD | 192670318 | PF-1-1/2-1BL | 192670319 | PF-1-1/2-1CL | 192670320 | PF-1-1/2-1YL | 1.500/38.10 | .750/19.05 | .040/1.02 | | | | | | | | | | | | |
| | 192670345 | PF-2-1BK | 192670346 | PF-2-1WT | 192670347 | PF-2-1RD | 192670348 | PF-2-1BL | 192670349 | PF-2-1CL | 192670350 | PF-2-1YL | 2.000/50.80 | 1.000/25.40 | .045/1.14 | | | | | | | | | | | | |
| H | 192670375 | PF-3-1BK | 192670376 | PF-3-1WT | 192670377 | PF-3-1RD | 192670378 | PF-3-1BL | 192670379 | PF-3-1CL | 192670380 | PF-3-1YL | 3.000/76.20 | 1.500/38.10 | .050/1.27 | | | | | | | | | | | | |
| | 192670405 | PF-4-1BK | | | | | | | 192670409 | PF-3-1CL | | | 4.000/101.60 | 2.000/50.80 | .055/1.40 | | | | | | | | | | | | |
| | 192670033 | PF-3/64-4BK | 192670034 | PF-3/64-4WT | 192670035 | PF-3/64-4RD | 192670036 | PF-3/64-4BL | 192670037 | PF-3/64-4CL | 192670038 | PF-3/64-4YL | .046/1.17 | .023/0.58 | .018/0.46 | | | | | | | | | | | | |
| | 192670063 | PF-1/16-4BK | 192670064 | PF-1/16-4WT | 192670065 | PF-1/16-4RD | 192670066 | PF-1/16-4BL | 192670067 | PF-1/16-4CL | 192670068 | PF-1/16-4YL | .063/1.60 | .031/0.79 | .018/0.46 | 1000/304.8 | | | | | | | | | | | |
| | 192670093 | PF-3/32-4BK | 192670094 | PF-3/32-4WT | 192670095 | PF-3/32-4RD | 192670096 | PF-3/32-4BL | 192670097 | PF-3/32-4CL | 192670098 | PF-3/32-4YL | .093/2.36 | .046/1.17 | .020/0.51 | SPOOL | | | | | | | | | | | |
| | 192670123 | PF-1/8-4BK | 192670124 | PF-1/8-4WT | 192670125 | PF-1/8-4RD | 192670126 | PF-1/8-4BL | 192670127 | PF-1/8-4CL | 192670128 | PF-1/8-4YL | .125/3.18 | .062/1.57 | .020/0.51 | | | | | | | | | | | | |
| | 192670153 | PF-3/16-4BK | 192670154 | PF-3/16-4WT | 192670155 | PF-3/16-4RD | 192670156 | PF-3/16-4BL | 192670157 | PF-3/16-4CL | 192670158 | PF-3/16-4YL | .187/4.75 | .093/2.36 | .020/0.51 | | | | | | | | | | | | |
| G | 192670183 | PF-1/4-4BK | 192670184 | PF-1/4-4WT | 192670185 | PF-1/4-4RD | 192670186 | PF-1/4-4BL | 192670187 | PF-1/4-4CL | 192670188 | PF-1/4-4YL | .250/6.35 | .125/3.18 | .025/0.64 | 500/152.4 | | | | | | | | | | | |
| | 192670213 | PF-3/8-4BK | 192670214 | PF-3/8-4WT | 192670215 | PF-3/8-4RD | 192670216 | PF-3/8-4BL | 192670217 | PF-3/8-4CL | 192670218 | PF-3/8-4YL | .375/9.53 | .187/4.75 | .025/0.64 | SPOOL | | | | | | | | | | | |
| | 192670243 | PF-1/2-4BK | 192670244 | PF-1/2-4WT | 192670245 | PF-1/2-4RD | 192670246 | PF-1/2-4BL | 192670247 | PF-1/2-4CL | 192670248 | PF-1/2-4YL | .500/12.70 | .250/6.35 | .025/0.64 | 200/60.96 | | SPOOL | | | | | | | | | |
| | 192670273 | PF-3/4-4BK | 192670274 | PF-3/4-4WT | 192670275 | PF-3/4-4RD | 192670276 | PF-3/4-4BL | 192670277 | PF-3/4-4CL | 192670278 | PF-3/4-4YL | .750/19.05 | .375/9.53 | .030/0.76 | | | | | | | | | | | | |
| | 192670303 | PF-1-4BK | 192670304 | PF-1-4WT | 192670305 | PF-1-4RD | 192670306 | PF-1-4BL | 192670307 | PF-1-4CL | 192670308 | PF-1-4YL | 1.000/25.40 | .500/12.70 | .035/0.89 | | | | | | | | | | | | |
| | 192670333 | PF-1-1/2-4BK | 192670334 | PF-1-1/2-4WT | 192670335 | PF-1-1/2-4RD | 192670336 | PF-1-1/2-4BL | 192670337 | PF-1-1/2-4CL | 192670338 | PF-1-1/2-4YL | 1.500/38.10 | .750/19.05 | .040/1.02 | | | | | | | | | | | | |
| F | 192670363 | PF-2-4BK | 192670364 | PF-2-4WT | 192670365 | PF-2-4RD | 192670366 | PF-2-4BL | 192670367 | PF-2-4CL | 192670368 | PF-2-4YL | 2.000/50.80 | 1.000/25.40 | .045/1.14 | | | | | | | | | | | | |
| | 192670393 | PF-3-4BK | 192670394 | PF-3-4WT | 192670395 | PF-3-4RD | 192670396 | PF-3-4BL | 192670397 | PF-3-4CL | 192670398 | PF-3-4YL | 3.000/76.20 | 1.500/38.10 | .050/1.27 | 50/15.2 | | SPOOL | | | | | | | | | |
| | 192670423 | PF-4-4BK | | | | | | | 192670427 | PF-4-4CL | | | 4.000/101.60 | 2.000/50.80 | .055/1.40 | | | | | | | | | | | | |
| | 192670039 | PF-3/64-5BK | 192670040 | PF-3/64-5WT | 192670041 | PF-3/64-5RD | 192670042 | PF-3/64-5BL | 192670043 | PF-3/64-5CL | 192670044 | PF-3/64-5YL | .046/1.17 | .023/0.58 | .018/0.46 | | | | | | | | | | | | |
| | 192670069 | PF-1/16-5BK | 192670070 | PF-1/16-5WT | 192670071 | PF-1/16-5RD | 192670072 | PF-1/16-5BL | 192670073 | PF-1/16-5CL | 192670074 | PF-1/16-5YL | .063/1.60 | .031/0.79 | .018/0.46 | | | | | | | | | | | | |
| | 192670099 | PF-3/32-5BK | 192670100 | PF-3/32-5WT | 192670101 | PF-3/32-5RD | 192670102 | PF-3/32-5BL | 192670103 | PF-3/32-5CL | 192670104 | PF-3/32-5YL | .093/2.36 | .046/1.17 | .020/0.51 | | | | | | | | | | | | |
| | 192670129 | PF-1/8-5BK | 192670130 | PF-1/8-5WT | 192670131 | PF-1/8-5RD | 192670132 | PF-1/8-5BL | 192670133 | PF-1/8-5CL | 192670134 | PF-1/8-5YL | .125/3.18 | .062/1.57 | .020/0.51 | | | | | | | | | | | | |
| E | 192670159 | PF-3/16-5BK | 192670160 | PF-3/16-5WT | 192670161 | PF-3/16-5RD | 192670162 | PF-3/16-5BL | 192670163 | PF-3/16-5CL | 192670164 | PF-3/16-5YL | .187/4.75 | .093/2.36 | .020/0.51 | | | | | | | | | | | | |
| | 192670189 | PF-1/4-5BK | 192670190 | PF-1/4-5WT | 192670191 | PF-1/4-5RD | 192670192 | PF-1/4-5BL | 192670193 | PF-1/4-5CL | 192670194 | PF-1/4-5YL | .250/6.35 | .125/3.18 | .025/0.64 | | | | | | | | | | | | |
| | 192670219 | PF-3/8-5BK | 192670220 | PF-3/8-5WT | 192670221 | PF-3/8-5RD | 192670222 | PF-3/8-5BL | 192670223 | PF-3/8-5CL | 192670224 | PF-3/8-5YL | .375/9.53 | .187/4.75 | .025/0.64 | | | | | | | | | | | | |
| | 192670249 | PF-1/2-5BK | 192670250 | PF-1/2-5WT | 192670251 | PF-1/2-5RD | 192670252 | PF-1/2-5BL | 192670253 | PF-1/2-5CL | 192670254 | PF-1/2-5YL | .500/12.70 | .250/6.35 | .025/0.64 | | | | | | | | | | | | |

SALES DRAWING



- NOTES:
- MATERIAL: POLYOLEFIN
 - OTHER CUT LENGTHS ARE AVAILABLE.

| | | | | | | |
|------------------------------------------------------------------------------------------------------------------------------------------------------------|-------------------------------------------------------------------------------------------------------------------------------|---------------------------------------------------------------------------------------------------------------------------|--------------------------------------------------------------------------------------------------------------------------------------|----------------------------------------------|---------------------|------------------------|
| REVISED & REDRAWN EC NO: ETC2006-0515 DRAWN: J.OMASTRO 2006/06/30 CHKD: J.MACNEIL 2006/06/30 APPR: R.ROSS 2006/07/05 DESCRIPTION | QUALITY SYMBOLS | GENERAL TOLERANCES (UNLESS SPECIFIED) | DIMENSION STYLE | SCALE | DESIGN UNITS | THIRD ANGLE PROJECTION |
| | $\nabla=0$ $\nabla=0$ | mm INCH 4 PLACES ± --- ± --- 3 PLACES ± --- ± --- 2 PLACES ± --- ± --- 1 PLACE ± --- ± --- ANGULAR ± --- ° | IN/MM DRAWN BY DATE BENDERLE 2004/08/04 CHECKED BY DATE R. DEROSS 2004/08/04 APPROVED BY DATE R. DEROSS 2004/08/04 | 1:1 | INCH | |
| | DRAFT WHERE APPLICABLE MUST REMAIN WITHIN DIMENSIONS | SEE CHART SIZE C | PERMA-FIT POLYOLEFIN HEAT SHRINK TUBING 19267 SERIES MOLEX INCORPORATED | MATERIAL NO. DOCUMENT NO. SD-19267-001 | SHEET NO. 1 OF 1 | |
| | THIS DRAWING CONTAINS INFORMATION THAT IS PROPRIETARY TO MOLEX INCORPORATED AND SHOULD NOT BE USED WITHOUT WRITTEN PERMISSION | | | | | |