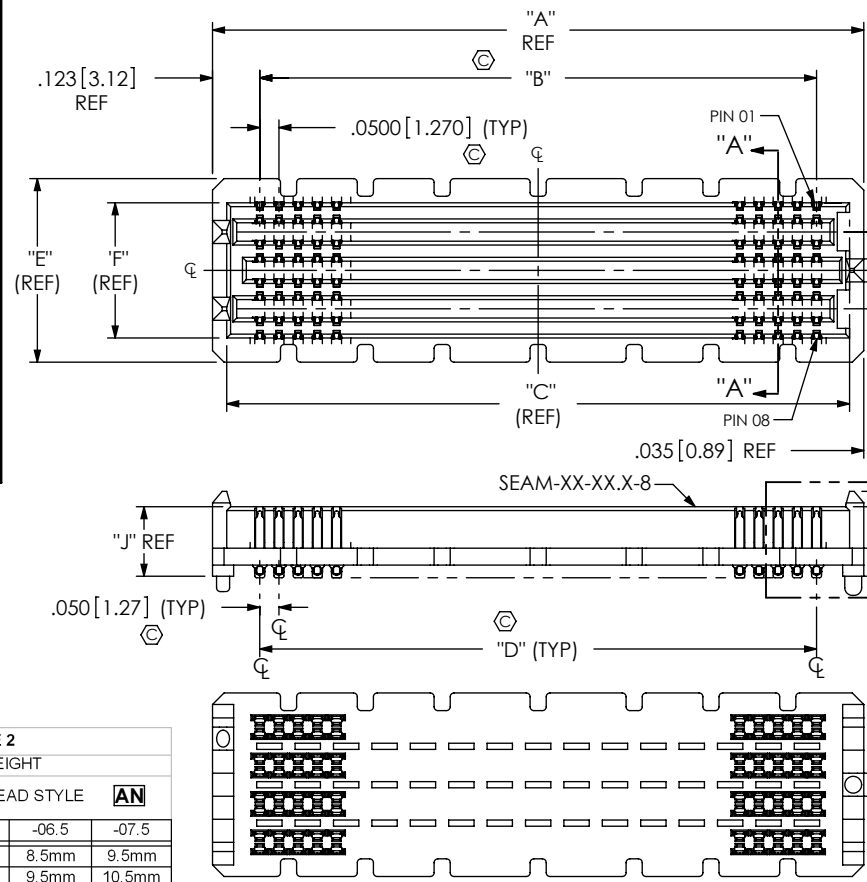


FIG. 1
-08: 8 ROW
(SEAM-30-02.0-XX-08-1-A-XX-K-TR SHOWN)
(SOME CENTER FEATURES, INCLUDING -K, NOT SHOWN FOR CLARITY)

SEAM-XX-XX.X-XX-XX-X-A-XX-K-TR



- No OF POSITIONS**
-10,*-15,****-19-20,
*****-25,-30,-40,-50
(PER ROW)
- LEAD STYLE**
-02.0 (SEE TABLE 1 & 2)
-03.0 (SEE TABLE 1 & 2)
-03.5 (SEE TABLE 1 & 2)
☒-06.5 (SEE TABLE 9 & 10)
-07.0 (SEE TABLE 9 & 10)
-09.0 (SEE TABLE 9 & 10)
-11.0 (SEE TABLE 9 & 10)
*-13.0 (SEE TABLE 9 & 10)

- TAPE & REEL**
(SEE NOTES 9, 10 & 11)
- POLYIMIDE PAD**
(SEE FIG. 4, SHT 2)
- DOT APPLICATOR-KAPTON TAPE.**
-04 ROW: USE K-DOT-.138-.250-.005
-05/-06 ROW: USE K-DOT-.236-.343-.005
-08 ROW: USE K-DOT-.325-.450-.005
-10 ROW: USE K-DOT-.404-.500-.005
- OPTION**
-GP: GUIDE POST
(SEE FIG. 8, SHT 5)
(ONLY AVAILABLE WITH -02.0 LEAD STYLE, 4 & 6 ROW, 20, 30, 40, & 50 POSITION)
- **-EP: EXTENDED GUIDE POST
(SEE FIG. 10, SHT 5)
(ONLY AVAILABLE WITH -02.0 & -03.5 LEAD STYLE, 20, 30, 40, & 50 POSITION)
- ALIGNMENT PIN**
(SEE FIG. 3, SHT 2)
(NOT AVAILABLE WITH -19 POSITION)
(SEE NOTE 7)

- PLATING SPECIFICATION**
-L: LIGHT GOLD IN CONTACT AREA, MATTE TIN ON TAIL
-(LEAD STYLE -02.0 THRU-03.5: USE SUB-T-1M36-XX.X-L-X)
-(LEAD STYLE -06.5 THRU-13.0: USE SUB-T-1M38-XX.X-L-X)
-SM: SELECTIVE GOLD IN CONTACT AREA, MATTE TIN ON TAIL
-(LEAD STYLE -02.0 THRU-03.5: USE SUB-T-1M36-XX.X-S-X)
-(LEAD STYLE -06.5 THRU-13.0: USE SUB-T-1M38-XX.X-S-X)
-S: SELECTIVE GOLD IN CONTACT AREA, MATTE TIN ON TAIL
-(LEAD STYLE -02.0 THRU-03.5: USE SUB-T-1M36-XX.X-S-X)
-(LEAD STYLE -06.5 THRU-13.0: USE SUB-T-1M38-XX.X-S-X)

- ROW**
-04: 4 ROWS (SEE FIG 13, SHT 6)
(NOT AVAILABLE IN -13.0 LEAD STYLE)
-05: 5 ROWS (SEE FIG. 7, SHT 4)
-06: 6 ROWS (SEE FIG. 6, SHT 4)
-08: 8 ROWS (SEE FIG. 1)
-10: 10 ROWS
(SEE FIG. 2, SHT 2)

- SOLDER COMPOSITION & STYLE**
-1: 63% TIN / 37% LEAD CHARGE TAIL
(USE SUB-T-1M3X-XX.X-X-1)
-2: 95.5% TIN / 3.8% SILVER / 7% COPPER CHARGE TAIL
(USE SUB-T-1M3X-XX.X-X-2)

- * = NOT TOOLED
- ** = NOT RELEASED FOR PRODUCTION
- *** = 10 POSITION ONLY AVAILABLE IN 4 ROW
- **** = ONLY AVAILABLE WITH -03.5 LEAD STYLE & 6 ROW
- ***** = ONLY AVAILABLE IN A 10 ROW
- ☒ = ONLY AVAILABLE IN 8 & 10 ROW
- ***** = ONLY AVAILABLE WITH -03.5 LEAD STYLE & 4 ROW

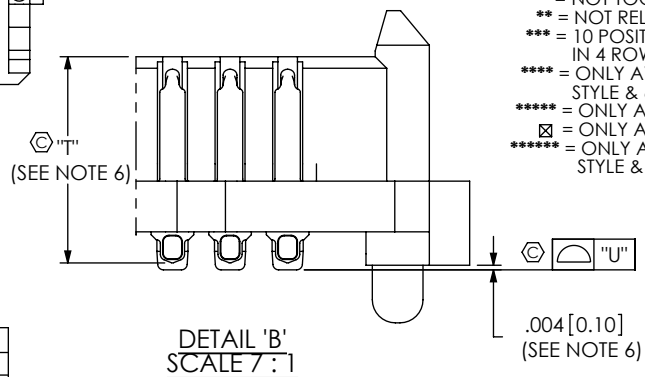


TABLE 12

LEAD STYLE	"T"
-02.0	.1790 [4.547]
-03.0	.2180 [5.537]
-03.5	.2380 [6.045]
-06.5	.3575 [9.081]
-07.0	.3750 [9.525]
-09.0	.4540 [11.532]
-11.0	.5330 [13.538]
*-13.0	.6120 [15.545]

TABLE 2
STACK HEIGHT

SEAM LEAD STYLE	-05.0	-06.0	-06.5	-07.5
-02.0	7mm	8mm	8.5mm	9.5mm
-03.0	8mm	9mm	9.5mm	10.5mm
-03.5	8.5mm	9.5mm	10mm	11mm

* = NOT TOOLED
(SEE SHEET 3 FOR LEAD STYLES -06.5 THRU -13.0)

TABLE 1

STYLE	"J"	BODY CALLOUT	TERMINAL
-02.0	0.181 [4.60]	SEAM-XX-02.0-XX-X	SUB-T-1M36-02.0-X-X
-03.0	0.220 [5.59]	SEAM-XX-03.0-XX-X	SUB-T-1M36-03.0-X-X
-03.5	0.240 [6.10]	SEAM-XX-03.5-XX-X	SUB-T-1M36-03.5-X-X

TABLE 13

LEAD STYLE	"U"		
	10-30 POS.	40 POS.	50 POS.
-02.0, -03.0, -03.5, -06.5, -07.0, -09.0, *-13.0	.006 [0.152]	.009 [0.229]	.009 [0.229]
-11.0	.0085 [0.216]	.009 [0.229]	.009 [0.229]

TABLE 4

No. OF ROWS	"E"	"F"	"G"	"H"
-04	.278 [7.06]	.152 [3.86]	.100 [2.54]	.050 [1.27]
-05, -06	.378 [9.60]	.252 [6.40]	.100 [2.54]	.050 [1.27]
-08	.478 [12.14]	.352 [8.94]	.200 [5.08]	.100 [2.54]
-10	.578 [14.68]	.452 [11.48]	.300 [7.62]	.150 [3.81]

TABLE 3

No. Of POS	"A"	"B"	"C"	"D"
***-10	.696 [17.68]	.450 [11.43]	.622 [15.80]	.450 [11.43]
****-15	.946 [24.03]	.700 [17.78]	.872 [22.15]	.700 [17.78]
****-19	1.146 [29.11]	.900 [22.86]	1.072 [27.23]	.900 [22.86]
-20	1.196 [30.38]	.950 [24.13]	1.122 [28.50]	.950 [24.13]
*****-25	1.446 [36.73]	1.200 [30.48]	1.372 [34.85]	1.200 [30.48]
-30	1.696 [43.08]	1.450 [36.83]	1.622 [41.20]	1.450 [36.83]
-40	2.196 [55.78]	1.950 [49.53]	2.122 [53.90]	1.950 [49.53]
-50	2.696 [68.48]	2.450 [62.23]	2.622 [66.60]	2.450 [62.23]

- NOTES:
1. Ⓞ REPRESENTS A CRITICAL DIMENSION.
2. MINIMUM PUSHOUT FORCE: 0.75 LBS.
3. NOTE DELETED.
4. 5 ROW SOLDER TAILS ARE NOT SYMMETRICAL WITH BODY WIDTH (.378 [9.60]); SEE FIG. 7, SHEET 4.
5. C18 TO BE INSPECTED OPTICALLY WHILE FOCUSED ON THIS SURFACE.
6. DIMENSION TO BE MEASURED IN ALL FOUR CORNERS.
7. WITHOUT -A AVAILABLE FOR EXISTING CUSTOMERS ONLY AS OF REVISION AD.
8. POLYIMIDE PAD WILL BE SUPPLIED WHETHER OR NOT -K IS SPECIFIED.
9. TAPE & REEL WILL BE SUPPLIED WHETHER OR NOT -TR IS SPECIFIED.
10. FOR QUANTITIES UP TO 49 PIECES, NO LEADER, TRAILER, OR REEL WILL BE SUPPLIED. FOR QUANTITIES 50 - 124, NO LEADER OR TRAILER WILL BE SUPPLIED.
11. ATTACH LABEL "SEAX-0001" TO EACH TAPE & REEL PACKAGE.
12. SEE RECOMMENDED FOOTPRINT DRAWING FOR STENCIL REQUIREMENTS.
13. SOLDER CHARGE VOLUME IS 0.891 x 10⁻⁵ IN ³ REF.

UNLESS OTHERWISE SPECIFIED, DIMENSIONS ARE IN INCHES.
TOLERANCES ARE:
DECIMALS ANGLES
.XX: ±.01 [.3]
.XXX: ±.005 [.13]
.XXXX: ±.0020 [.051]

PROPRIETARY NOTE
THIS DOCUMENT CONTAINS INFORMATION CONFIDENTIAL AND PROPRIETARY TO SAMTEC, INC. AND SHALL NOT BE REPRODUCED OR TRANSFERRED TO OTHER DOCUMENTS OR DISCLOSED TO OTHERS OR USED FOR ANY PURPOSE OTHER THAN THAT WHICH IT WAS OBTAINED WITHOUT THE EXPRESSED WRITTEN CONSENT OF SAMTEC, INC.

520 PARK EAST BLVD, NEW ALBANY, IN 47150
PHONE: 812-944-6733 FAX: 812-948-5047
e-Mail: info@SAMTEC.com code: 55322

MATERIAL: DO NOT SCALE DRAWING SHEET SCALE: 2:1
INSULATOR: LCP, COLOR: BLACK
TERMINAL: COPPER ALLOY

DESCRIPTION:
.050 PITCH TERMINAL ARRAY ASSEMBLY
DWG. NO.

SEAM-XX-XX.X-XX-XX-X-A-XX-K-TR
BY: BRATCHER 06/02/2004 SHEET 1 OF 6

FIG. 2

-10: 10 ROW
 (SAME AS FIG. 1, EXCEPT AS SHOWN)
 (SEAM-30-02.0-XX-10-1-A-XX-K-TR SHOWN)
 (SOME CENTER FEATURES, INCLUDING -K, NOT SHOWN FOR CLARITY)

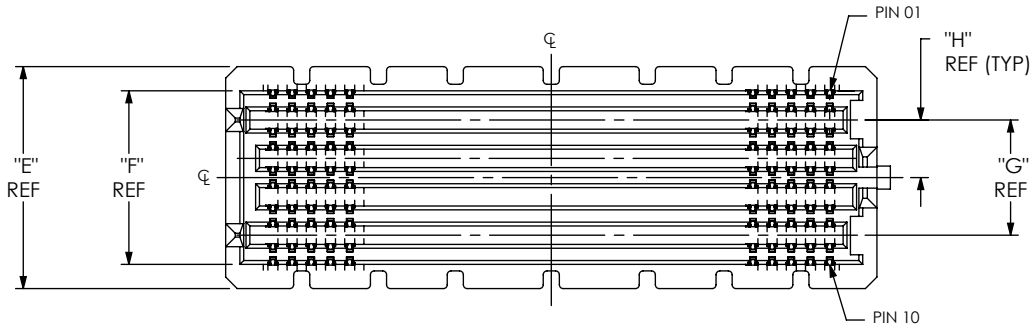
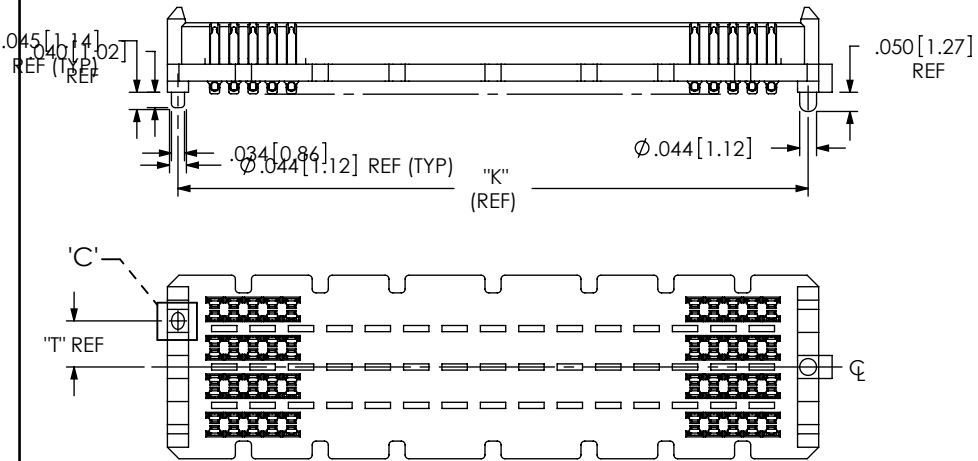


FIG. 3

-A: ALIGNMENT PINS
 APPLIES TO ALL -A OPTION PART NUMBERS
 (SAME AS FIG. 1, EXCEPT AS SHOWN)
 (SEAM-30-02.0-XX-08-1-A-XX-K-TR SHOWN)
 (SOME CONTACTS NOT SHOWN FOR CLARITY)



No. OF ROWS	"T"
-04	.079[2.01]
-05	.120[3.05]
-06	.120[3.05]
-08	.120[3.05]
-10	.120[3.05]

No. OF POS	"K"
***-10	.641[16.28]
****-15	.891[22.63]
-20	1.141 [28.98]
*****-25	1.391[35.33]
-30	1.641 [41.68]
-40	2.141 [54.38]
-50	2.641 [67.08]

DETAIL 'C'
 SCALE 4:1

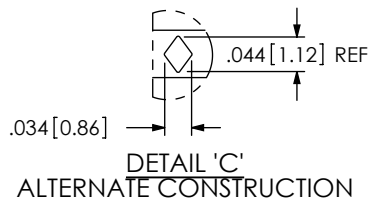
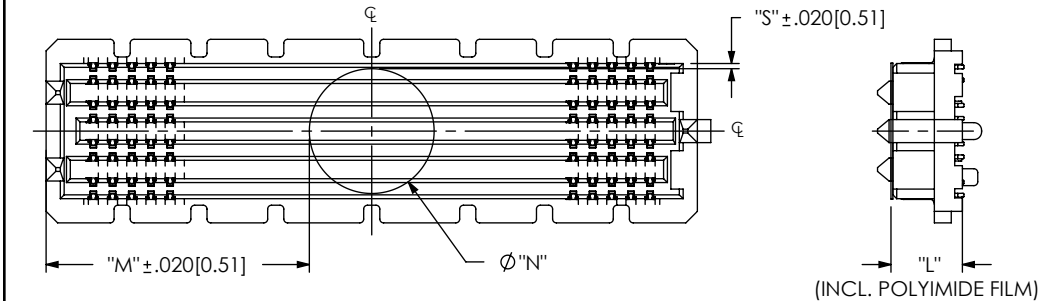


FIG. 4

-K: POLYIMIDE PAD
 (SEAM-30-02.0-XX-08-1-A-XX-K-TR SHOWN)
 (SAME AS FIG. 1, EXCEPT AS SHOWN)
 (ALL CONTACTS NOT SHOWN FOR CLARITY)

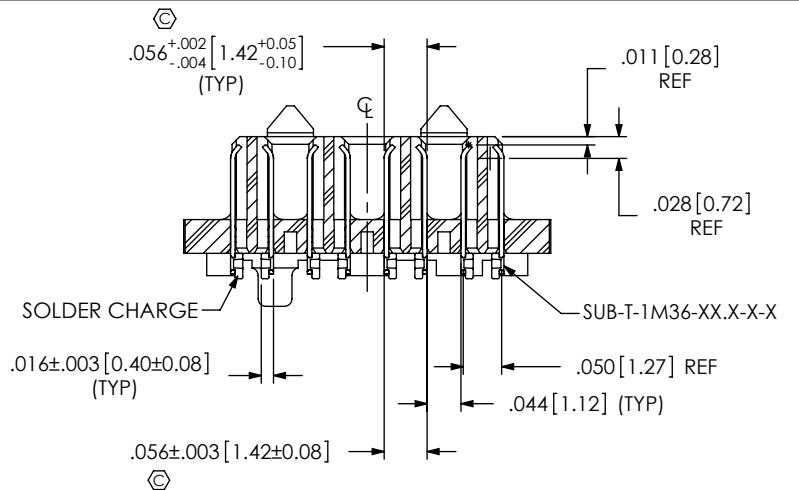


"M" = ("A" (SEE TABLE 3) - "N") / 2 ±.020

LEAD STYLE	"L"
-02.0	.186 [4.72]
-03.0	.225 [5.72]
-03.5	.245 [6.22]
-06.5	.365 [9.27]
-07.0	.382 [9.70]
-09.0	.461 [11.71]
-11.0	.540 [13.72]
*-13.0	.619 [15.72]

* = NOT TOOLED

SECTION "A"- "A"
 SCALE 4:1



No. OF ROWS	Ø "N"	"S"
-04	.138[3.50]	.007[.18]
-05, -06	.236 [6.00]	.008 [0.20]
-08	.325 [8.25]	.014 [0.34]
-10	.404 [10.25]	.024 [0.61]

PROPRIETARY NOTE

THIS DOCUMENT CONTAINS INFORMATION CONFIDENTIAL AND PROPRIETARY TO SAMTEC, INC. AND SHALL NOT BE REPRODUCED OR TRANSFERRED TO OTHER DOCUMENTS OR DISCLOSED TO OTHERS OR USED FOR ANY PURPOSE OTHER THAN THAT WHICH IT WAS OBTAINED WITHOUT THE EXPRESSED WRITTEN CONSENT OF SAMTEC, INC.

DO NOT SCALE DRAWING

SHEET SCALE: 2:1



520 PARK EAST BLVD. NEW ALBANY, IN 47150
 PHONE: 812-944-6733 FAX: 812-948-5047
 e-Mail: info@SAMTEC.com code: 53322

DESCRIPTION:
 .050 PITCH TERMINAL ARRAY ASSEMBLY
 DWG. NO.
 SEAM-XX-XX.X-XX-XX-X-A-XX-K-TR

BY: BRATCHER 06/02/2004 SHEET 2 OF 6

FIG. 5

-06.5 THRU -13.0 LEAD STYLES
(SAME AS FIG. 1, EXCEPT AS SHOWN)
(SEAM-30-09.0-XX-08-X-A-XX-K-TR SHOWN)
(SOME CENTER FEATURES, INCLUDING -K, NOT SHOWN FOR CLARITY)

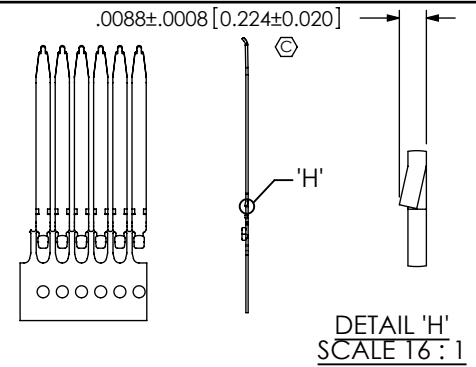
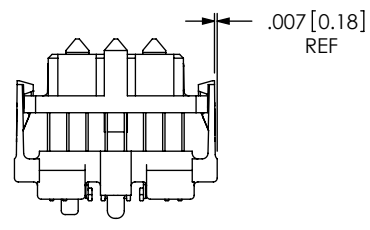
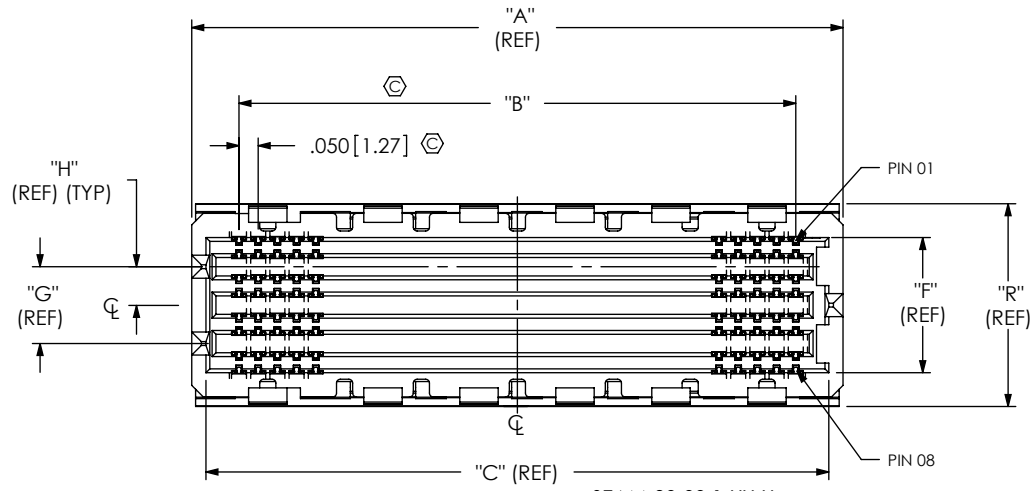


TABLE 9
STACK HEIGHT

SEAM-S LEAD STYLE	SEAF LEAD STYLE AN			
	-05.0	-06.0	-06.5	-07.5
-6.5	11.5mm	12.5mm	13mm	14mm
-07.0	12mm	13mm	13.5mm	14.5mm
-09.0	14mm	15mm	15.5mm	16.5mm
-11.0	16mm	17mm	17.5mm	18.5mm
*-13.0	18mm	19mm	19.5mm	20.5mm

* = NOT TOOLED

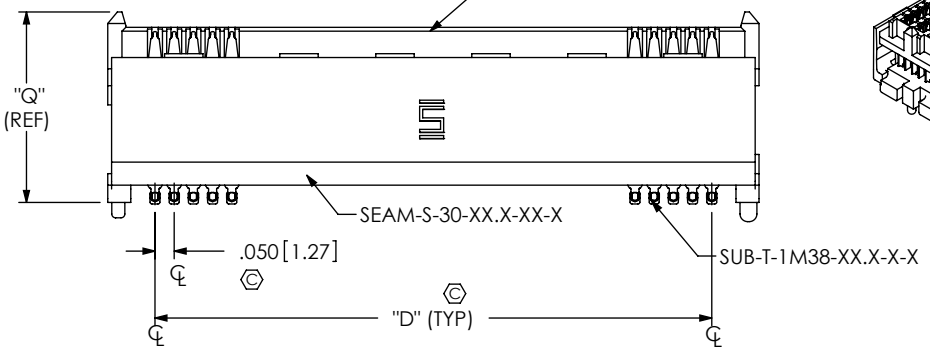
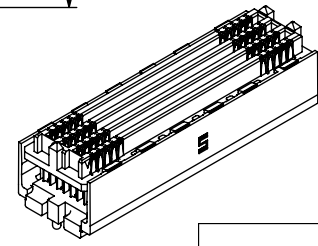
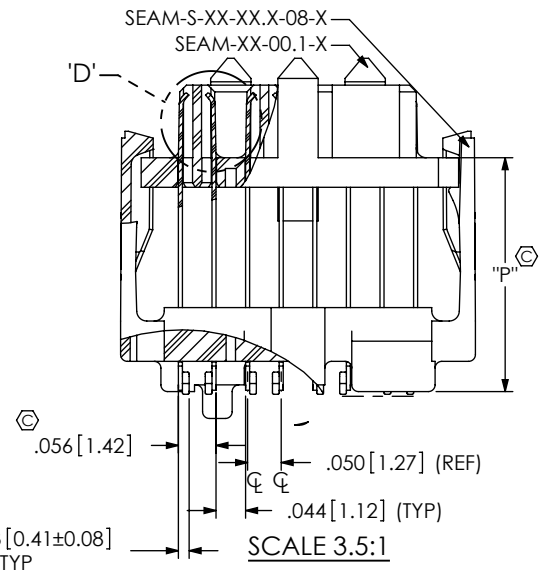
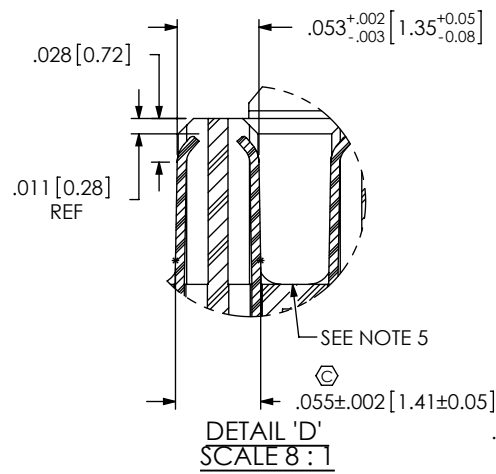


TABLE 10

ROW	STYLE	"P"	"Q"	"R"	SPACER BODY	TOP BODY	TERMINAL
-04	-07.0	.271 [6.88]	.417 [10.60]	.328 [8.33]	SEAM-S-XX-07.0-04-X	SEAM-XX-00.1-04	SUB-T-1M38-07.0-X-X
	-09.0	.350 [8.89]	.496 [12.60]	.328 [8.33]	SEAM-S-XX-09.0-04-X	SEAM-XX-00.1-04	SUB-T-1M38-09.0-X-X
	-11.0	.429 [10.90]	.575 [14.60]	.328 [8.33]	SEAM-S-XX-11.0-04-X	SEAM-XX-00.1-04	SUB-T-1M38-11.0-X-X
-05	-07.0	.271 [6.88]	.417 [10.60]	.428 [10.87]	SEAM-S-XX-07.0-05-X	SEAM-XX-00.1-05	SUB-T-1M38-07.0-X-X
	-09.0	.350 [8.89]	.496 [12.60]	.428 [10.87]	SEAM-S-XX-09.0-05-X	SEAM-XX-00.1-05	SUB-T-1M38-09.0-X-X
	-11.0	.429 [10.90]	.575 [14.60]	.428 [10.87]	SEAM-S-XX-11.0-05-X	SEAM-XX-00.1-05	SUB-T-1M38-11.0-X-X
	*-13.0	.508 [12.90]	.654 [16.60]	.428 [10.87]	SEAM-S-XX-13.0-05-X	SEAM-XX-00.1-05	SUB-T-1M38-13.0-X-X
-06	-07.0	.271 [6.88]	.417 [10.60]	.428 [10.87]	SEAM-S-XX-07.0-06-X	SEAM-XX-00.1-06	SUB-T-1M38-07.0-X-X
	-09.0	.350 [8.89]	.496 [12.60]	.428 [10.87]	SEAM-S-XX-09.0-06-X	SEAM-XX-00.1-06	SUB-T-1M38-09.0-X-X
	-11.0	.429 [10.90]	.575 [14.60]	.428 [10.87]	SEAM-S-XX-11.0-06-X	SEAM-XX-00.1-06	SUB-T-1M38-11.0-X-X
	*-13.0	.508 [12.90]	.654 [16.60]	.428 [10.87]	SEAM-S-XX-13.0-06-X	SEAM-XX-00.1-06	SUB-T-1M38-13.0-X-X
-08	-06.5	.252 [6.40]	.400 [10.16]	.528 [13.41]	SEAM-S-XX-06.5-08-X	SEAM-XX-00.1-08	SUB-T-1M38-06.5-X-X
	-07.0	.271 [6.88]	.417 [10.60]	.528 [13.41]	SEAM-S-XX-07.0-08-X	SEAM-XX-00.1-08	SUB-T-1M38-07.0-X-X
	-09.0	.350 [8.89]	.496 [12.60]	.528 [13.41]	SEAM-S-XX-09.0-08-X	SEAM-XX-00.1-08	SUB-T-1M38-09.0-X-X
	-11.0	.429 [10.90]	.575 [14.60]	.528 [13.41]	SEAM-S-XX-11.0-08-X	SEAM-XX-00.1-08	SUB-T-1M38-11.0-X-X
-10	*-13.0	.508 [12.90]	.654 [16.60]	.528 [13.41]	SEAM-S-XX-13.0-08-X	SEAM-XX-00.1-08	SUB-T-1M38-13.0-X-X
	-06.5	.252 [6.40]	.400 [10.16]	.628 [15.95]	SEAM-S-XX-06.5-10-X	SEAM-XX-00.1-10	SUB-T-1M38-06.5-X-X
	-07.0	.271 [6.88]	.417 [10.60]	.628 [15.95]	SEAM-S-XX-07.0-10-X	SEAM-XX-00.1-10	SUB-T-1M38-07.0-X-X
	-09.0	.350 [8.89]	.496 [12.60]	.628 [15.95]	SEAM-S-XX-09.0-10-X	SEAM-XX-00.1-10	SUB-T-1M38-09.0-X-X
	-11.0	.429 [10.90]	.575 [14.60]	.628 [15.95]	SEAM-S-XX-11.0-10-X	SEAM-XX-00.1-10	SUB-T-1M38-11.0-X-X
	*-13.0	.508 [12.90]	.654 [16.60]	.628 [15.95]	SEAM-S-XX-13.0-10-X	SEAM-XX-00.1-10	SUB-T-1M38-13.0-X-X

* = NOT TOOLED



PROPRIETARY NOTE
THIS DOCUMENT CONTAINS INFORMATION CONFIDENTIAL AND PROPRIETARY TO SAMTEC, INC. AND SHALL NOT BE REPRODUCED OR TRANSFERRED TO OTHER DOCUMENTS OR DISCLOSED TO OTHERS OR USED FOR ANY PURPOSE OTHER THAN THAT WHICH IT WAS OBTAINED WITHOUT THE EXPRESSED WRITTEN CONSENT OF SAMTEC, INC.

DO NOT SCALE DRAWING
SHEET SCALE: 2:1

samtec
520 PARK EAST BLVD. NEW ALBANY, IN 47150
PHONE: 812-944-6733 FAX: 812-948-5047
e-Mail: info@SAMTEC.com code: 53322

DESCRIPTION:
.050 PITCH TERMINAL ARRAY ASSEMBLY

DWG. NO.
SEAM-XX-XX.X-XX-XX-X-A-XX-K-TR

BY: BRATCHER 06/02/2004 SHEET 3 OF 6

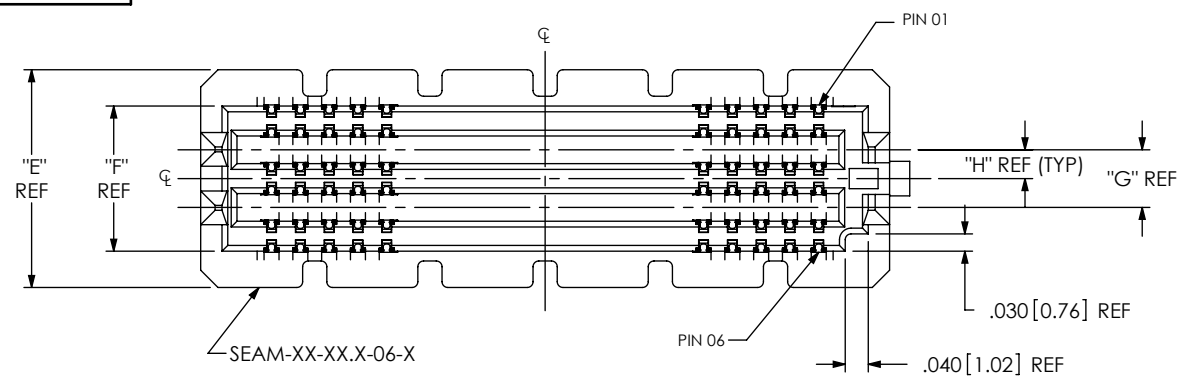


FIG. 6
 -06: 6 ROWS
 (SAME AS FIG. 1, EXCEPT AS SHOWN)
 (SEAM-20-02.0-XX-06-X-A-XX-K-TR SHOWN)
 (SOME CENTER FEATURES, INCLUDING -K, NOT SHOWN FOR CLARITY)

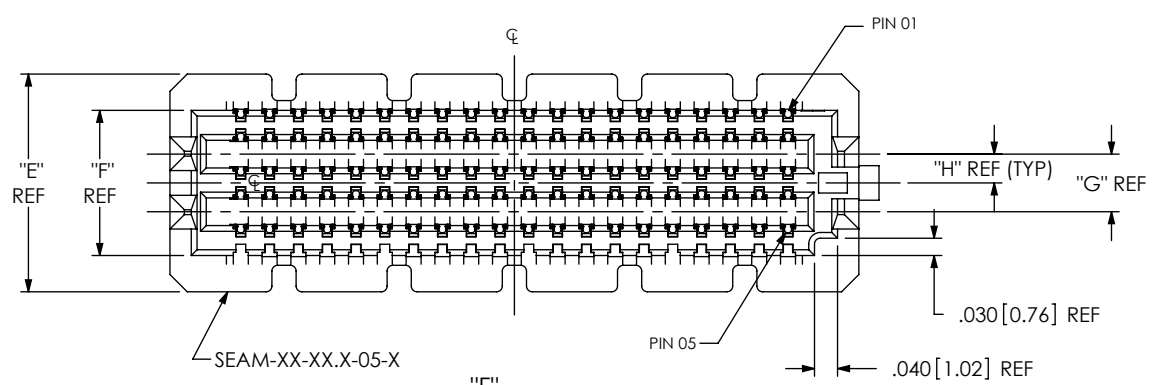
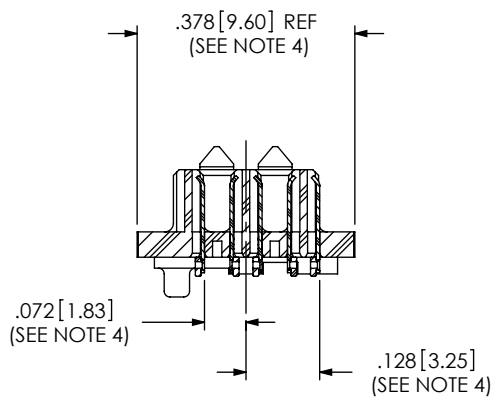
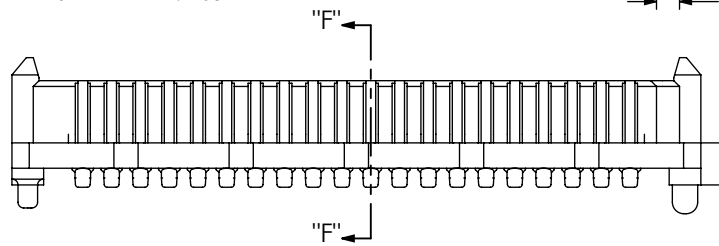
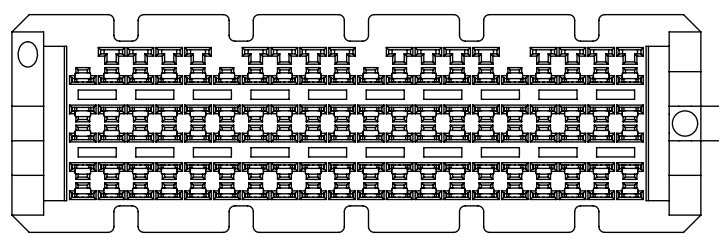


FIG. 7
 -05: 5 ROWS
 (SAME AS FIG. 6, EXCEPT AS SHOWN)
 (SEAM-20-02.0-XX-05-X-A-XX-K-TR SHOWN)
 (SEE NOTE 4)



SECTION "F"-"F"



PROPRIETARY NOTE
 THIS DOCUMENT CONTAINS INFORMATION
 CONFIDENTIAL AND PROPRIETARY TO
 SAMTEC, INC. AND SHALL NOT BE REPRODUCED
 OR TRANSFERRED TO OTHER DOCUMENTS OR
 DISCLOSED TO OTHERS OR USED FOR ANY
 PURPOSE OTHER THAN THAT WHICH IT WAS
 OBTAINED WITHOUT THE EXPRESSED WRITTEN
 CONSENT OF SAMTEC, INC.

DO NOT SCALE DRAWING

SHEET SCALE: 3:1

samtec

520 PARK EAST BLVD, NEW ALBANY, IN 47150
 PHONE: 812-944-6733 FAX: 812-948-5047
 e-Mail: info@SAMTEC.com code: 55322

DESCRIPTION:
 .050 PITCH TERMINAL ARRAY ASSEMBLY

DWG. NO.
SEAM-XX-XX.X-XX-XX-X-A-XX-K-TR

BY: BRATCHER 06/02/2004 SHEET 4 OF 6

FIG. 8

-GP: GUIDE POST OPTION
 (ONLY AVAILABLE WITH -.02.0 LEAD STYLE, 4 & 6 ROW, 20, 30, 40, & 50 POSITIONS)
 (MATES WITH SEAF RIGHT ANGLE ONLY)
 (SAME AS FIG. 1, EXCEPT AS SHOWN)
 (SEAM-20-02.0-XX-06-2-A-GP-K-TR SHOWN)
 (SOME CONTACTS NOT SHOWN FOR CLARITY)

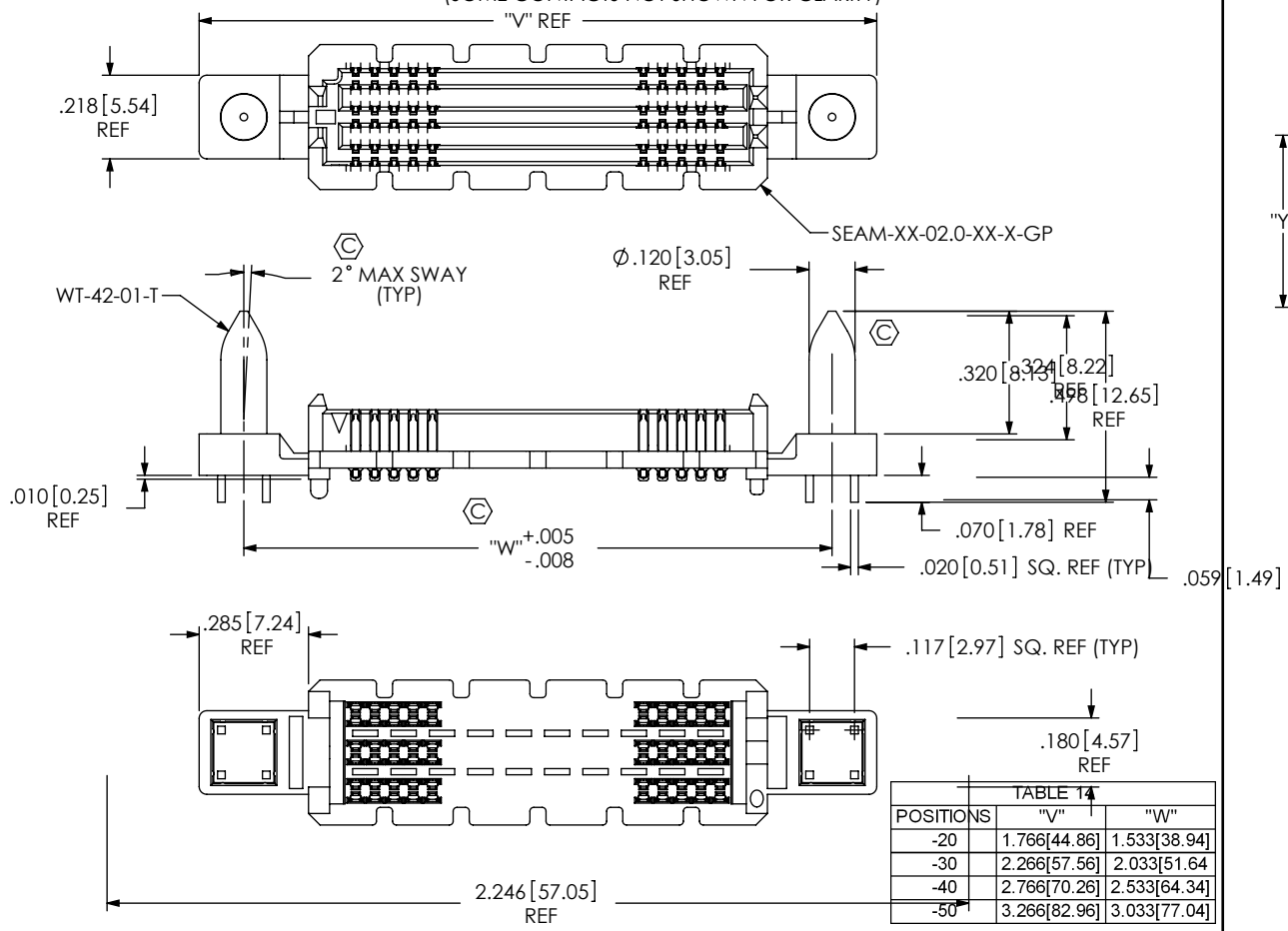


TABLE 14

POSITIONS	"V"	"W"
-20	1.766[44.86]	1.533[38.94]
-30	2.266[57.56]	2.033[51.64]
-40	2.766[70.26]	2.533[64.34]
-50	3.266[82.96]	3.033[77.04]

FIG. 10

-EP: EXTENDED GUIDE POST OPTION
 (ONLY AVAILABLE WITH -.02.0 & -.03.5 LEAD STYLES, 4 & 6 ROW, 20, 30, 40, & 50 POSITIONS)
 (SAME AS FIG. 8, EXCEPT AS SHOWN)
 (SEAM-20-03.5-XX-06-2-A-EP-K-TR SHOWN)
 (SOME CONTACTS NOT SHOWN FOR CLARITY)

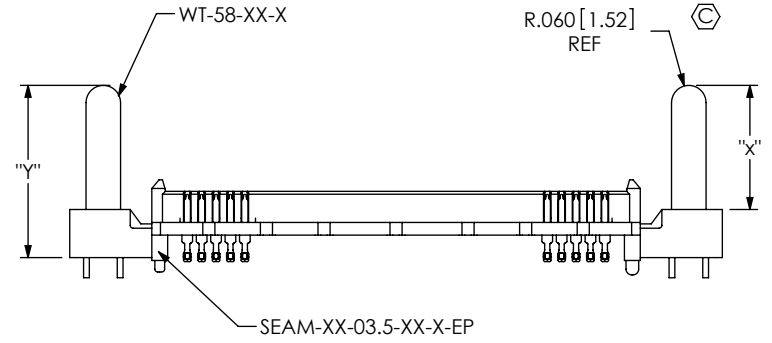


TABLE 15

LEAD STYLE	"X"	"Y"
-.02.0	.372[9.45]	.539[13.69]
-.03.5	.431[10.95]	.598[15.19]

TABLE 16
-EP STACK HEIGHTS

SEAM LEAD STYLE	SEAF LEAD STYLE	STACK HEIGHT
-.02.0	-.05.0	7MM
-.03.5	-.06.5	10MM

PROPRIETARY NOTE
 THIS DOCUMENT CONTAINS INFORMATION CONFIDENTIAL AND PROPRIETARY TO SAMTEC, INC. AND SHALL NOT BE REPRODUCED OR TRANSFERRED TO OTHER DOCUMENTS OR DISCLOSED TO OTHERS OR USED FOR ANY PURPOSE OTHER THAN THAT WHICH IT WAS OBTAINED WITHOUT THE EXPRESSED WRITTEN CONSENT OF SAMTEC, INC.



520 PARK EAST BLVD, NEW ALBANY, IN 47150
 PHONE: 812-944-6733 FAX: 812-948-5047
 e-Mail: info@SAMTEC.com code: 55322

DO NOT SCALE DRAWING

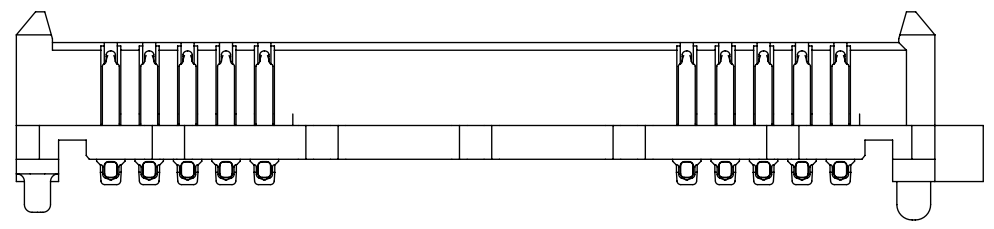
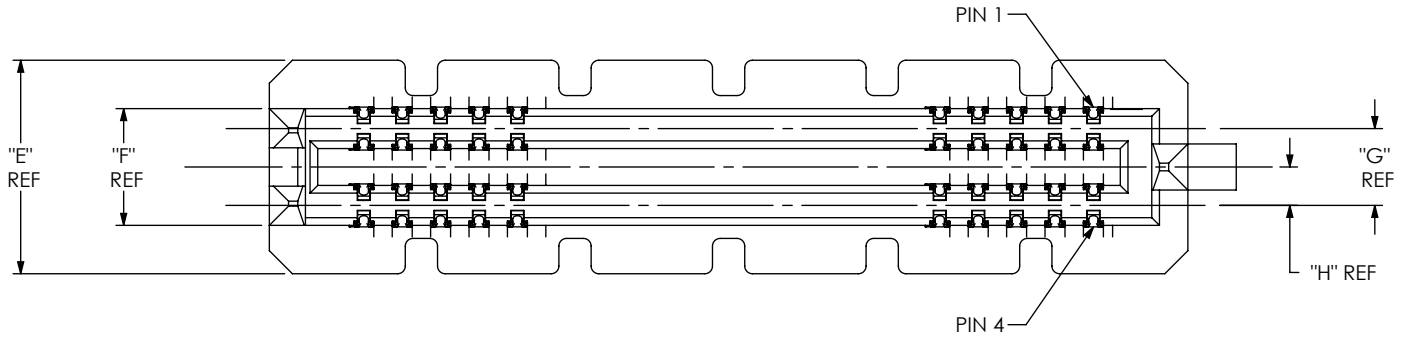
SHEET SCALE: 2:1

DESCRIPTION:
 .050 PITCH TERMINAL ARRAY ASSEMBLY

DWG. NO.
 SEAM-XX-XX.X-XX-XX-X-A-XX-K-TR

BY: BRATCHER 06/02/2004 SHEET 5 OF 6

FIG. 9
-04: 4 ROW
(SAME AS FIG. 1, EXCEPT AS SHOWN)
(SEAM-20-02.0-XX-04-1-A-XX-K-TR SHOWN)
(SOME CENTER FEATURES, INCLUDING -K, NOT SHOWN FOR CLARITY)



PROPRIETARY NOTE
 THIS DOCUMENT CONTAINS INFORMATION
 CONFIDENTIAL AND PROPRIETARY TO
 SAMTEC, INC. AND SHALL NOT BE REPRODUCED
 OR TRANSFERRED TO OTHER DOCUMENTS OR
 DISCLOSED TO OTHERS OR USED FOR ANY
 PURPOSE OTHER THAN THAT WHICH IT WAS
 OBTAINED WITHOUT THE EXPRESSED WRITTEN
 CONSENT OF SAMTEC, INC.

DO NOT SCALE DRAWING

 SHEET SCALE:4:1



520 PARK EAST BLVD, NEW ALBANY, IN 47150
 PHONE: 812-944-6733 FAX: 812-948-5047
 e-Mail: info@SAMTEC.com code: 55322

DESCRIPTION:
 .050 PITCH TERMINAL ARRAY ASSEMBLY

DWG. NO.
 SEAM-XX-XX.X-XX-XX-X-A-XX-K-TR

BY: BRATCHER 06/02/2004 SHEET 6 OF 6