

# Customer Information Sheet

DRAWING No: M40-620XXXX

SHEET 2 OF 2

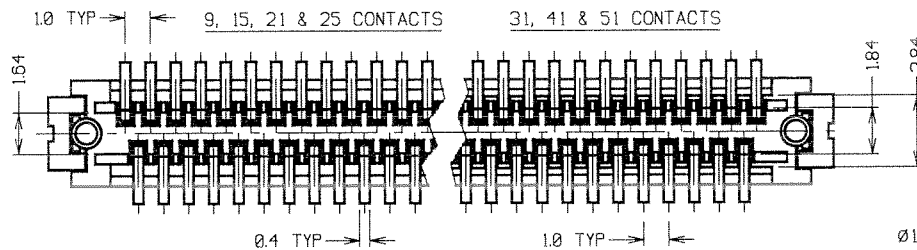
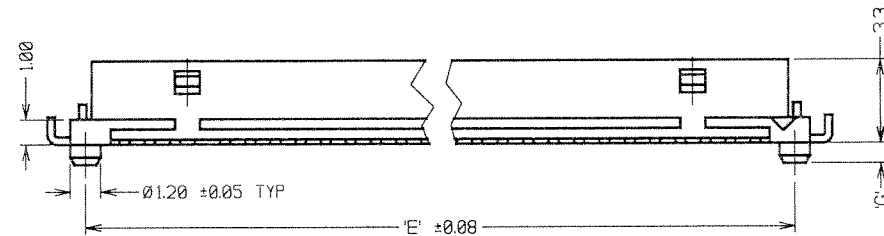
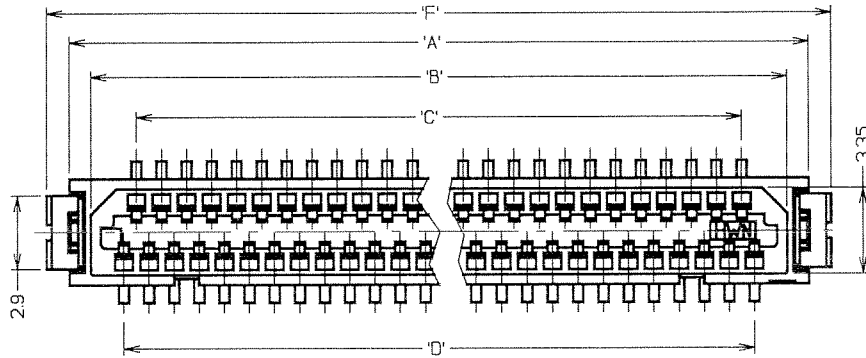
IF IN DOUBT - ASK

(C)

NOT TO SCALE

THIRD ANGLE PROJECTION

ALL DIMENSIONS IN mm



PART No.	No. OF CONTACTS	'A'	'B'	'C'	'D'	'E'	'F'	'G'	'J'
M40-62009XX	9	8.3	6.5	3.0	4.0	7.1	10.1	1.0	1.84 $\pm\frac{0.05}{0.1}$
M40-62015XX	15	11.3	9.5	6.0	7.0	10.1	13.1	1.0	1.84 $\pm\frac{0.05}{0.1}$
M40-62021XX	21	14.3	12.5	9.0	10.0	13.1	16.1	1.0	1.84 $\pm\frac{0.05}{0.1}$
M40-62025XX	25	16.3	14.5	11.0	12.0	15.1	18.1	1.0	1.84 $\pm\frac{0.05}{0.1}$
M40-62031XX	31	19.3	17.5	14.0	15.0	18.1	21.1	0.8	3.0 $\pm\frac{0.05}{0.1}$
M40-62041XX	41	24.3	22.5	19.0	20.0	23.1	26.1	0.8	3.0 $\pm\frac{0.05}{0.1}$
M40-62051XX	51	29.3	27.5	24.0	25.0	28.1	31.1	0.8	3.0 $\pm\frac{0.05}{0.1}$

**SPECIFICATIONS:**

**MATERIAL:**

MOULDING = PA UL94V-0 (NATURAL)

CONTACTS = PHOSPHOR BRONZE

RETAINER = BRASS

**FINISH:**

CONTACTS = 1-2 $\mu$  100% REFLOW TIN

RETAINER = 2-6 $\mu$  100% MATTE TIN OVER 1.27 $\mu$  MIN NICKEL

**ELECTRICAL:**

CURRENT RATING = 0.5 AMPS

VOLTAGE RATING = 100V AC

DIELECTRIC STRENGTH = 250V AC FOR 1 MINUTE

INSULATION RESISTANCE = 500 MEGOHMS MIN (100V DC)

CONTACT RESISTANCE = 50 MILLIOHMS MAX (0.1A DC)

**MECHANICAL:**

DURABILITY = 30 CYCLES

**ENVIRONMENTAL:**

TEMPERATURE RANGE = -55°C TO +85°C

**PACKING:**

TUBE

**NOTES:**

- MATES WITH M40-600XXXX TO GIVE 4.3mm BOARD-TO-BOARD HEIGHT.
- ALL TOLERANCES  $\pm 0.30$  UNLESS OTHERWISE STATED.

ORDER CODE:

**M40-620XX46**

No. OF CONTACTS  
9, 15, 21, 25, 31,  
41, 51

FINISH:  
46 = 100% TIN

**HARWIN**

HARWIN USA  
TEL: 603 893 5376  
FAX: 603 893 5396  
mfs@harwin.com

HARWIN Europe (UK)  
TEL: 023 9231 4545  
FAX: 023 9231 4590  
mfs@harwin.co.uk

HARWIN Asia  
TEL: +65 6 779 4909  
FAX: +65 6 779 3868  
mfs@harwin.com.sg

THIS DRAWING AND ANY INFORMATION OR DESCRIPTIVE MATTER SET OUT HEREON ARE CONFIDENTIAL AND COPYRIGHT PROPERTY OF THE HARWIN GROUP AND MUST NOT BE DISCLOSED, LOANED, COPIED OR USED FOR MANUFACTURING, TENDERING OR FOR ANY OTHER PURPOSE WITHOUT THEIR WRITTEN PERMISSION.

**TOLERANCES**  
X:  $\pm 0.1$ mm  
X.X:  $\pm 0.25$ mm  
X.XX:  $\pm 0.10$ mm  
X.XXX:  $\pm 0.01$ mm  
ANGLES =  $\pm 5^\circ$   
UNLESS STATED

**MATERIAL:**  
SEE ABOVE

**FINISH:** SEE ABOVE

**S/AREA:** mm<sup>2</sup>

**TITLE:**  
1.00mm PITCH SMT  
SOCKET CONNECTOR

**DRAWING NUMBER:**

**M40-620XXXX**

SHT  
2 OF 2

RA	9	07.06.07	9776
NAME	ISS.	DATE	C/NOTE
APPROVED:			
CHECKED:			
DRAWN:	W. J. BOURNE		
CUSTOMER REF.:			
ASSEMBLY DRG:			