



TAI-SAW TECHNOLOGY CO., LTD.

No. 3, Industrial 2nd Rd., Ping-Chen Industrial District,
Taoyuan, 324, Taiwan, R.O.C.

TEL: 886-3-4690038 FAX: 886-3-4697532

E-mail: tstsales@mail.taisaw.com Web: www.taisaw.com

Approval Sheet For Product Specification

Issued Date:

Product Name: SAW Filter 135.42MHz SMD 7.0x5.0mm

TST Parts No.:TB0571A

Customer Parts No.:_____

Company: _____
Division: _____
Approved by : _____
Date: _____

Checked by: _____ Andy Lee

Approval by: _____ Francis Chen

Date: _____ 2007/10/29



TAI-SAW TECHNOLOGY CO., LTD.

No. 3, Industrial 2nd Rd., Ping-Chen Industrial District,
Taoyuan, 324, Taiwan, R.O.C.

TEL: 886-3-4690038 FAX: 886-3-4697532

E-mail: tstsales@mail.taisaw.com Web: www.taisaw.com

SAW Filter 135.42 MHz

MODEL NO.: TB0571A

Rev. No. 1

A. MAXIMUM RATING:

1. Operating Temperature: -10°C to +85°C
2. Storage Temperature: -40°C to +85°C
3. Maximum Input Power : 10dBm

RoHS Compliant
Lead free
Lead-free soldering

B. ELECTRICAL CHARACTERISTICS:

1. Ambient Temperature: 25 °

Item		Min.	Typical	Max.	
Center frequency	Fc	MHz	135.36	135.42	135.48
Insertion loss at Fc		dB	-	9.7	12.0
Bandwidth at -1.0dB		MHz	-	2.1	-
Bandwidth at -3.0dB		MHz	-	3.1	-
Bandwidth at -40.0dB		MHz	-	6.4	-
Group Delay Ripple Fc±1.0 MHz		nS	-	82	120
Attenuation (Reference level from minimum Insertion loss)					
Fc ± 1.25 MHz		dB	-	1.7	3.0
Fc ± 4 MHz ~ Fc ± 15MHz		dB	38	42	-
Fc ± 15 MHz ~ Fc ± 25MHz		dB	45	54	-
Temp Coefficient		ppm/ C ²	-	-0.032	-

D. FREQUENCY CHARACTERISTICS :

1.S21 Response

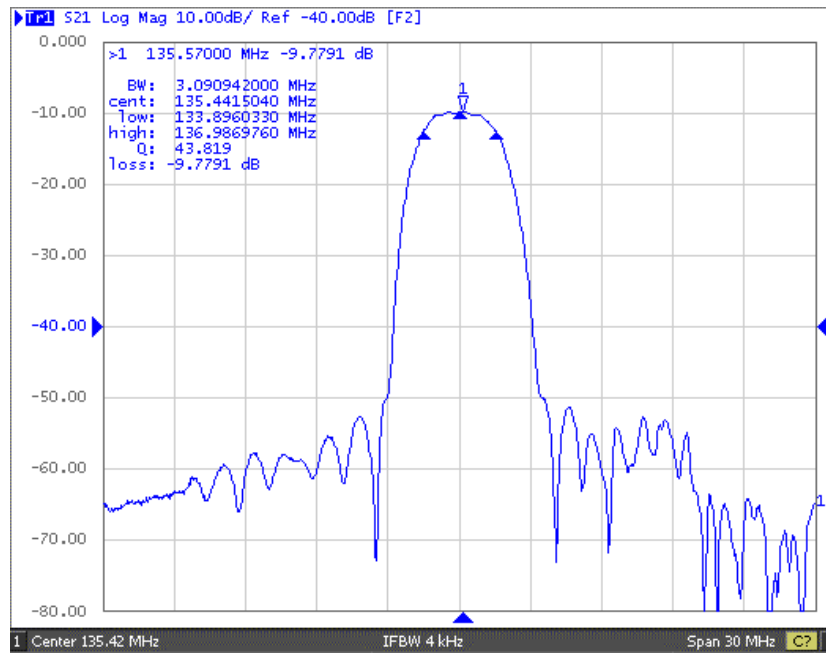


Fig1. Horizontal: 3MHz/Div Vertical: 10dB/Div

2. Passband Ripple

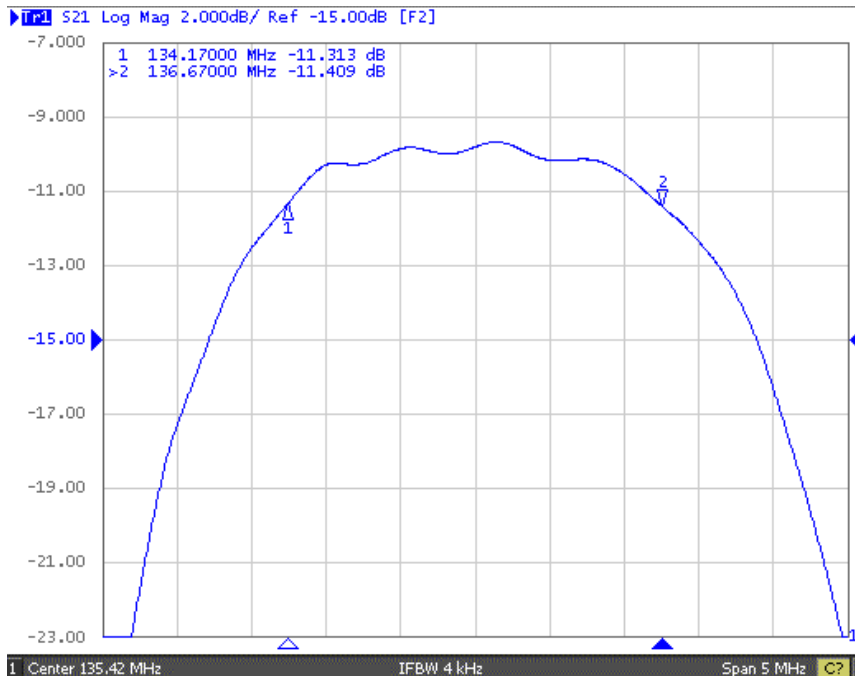


Fig2. Horizontal: 0.5MHz/Div Vertical: 2dB/Div

3. Group Delay Ripple

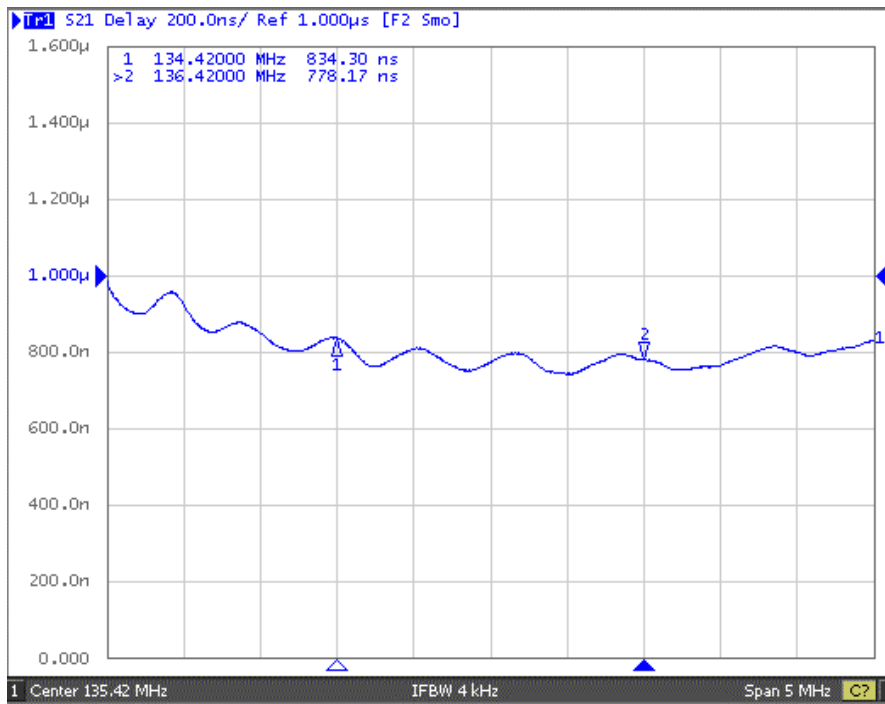


Fig3. Horizontal: 0.5MHz/Div Vertical: 200nS/Div

4. Wide Band

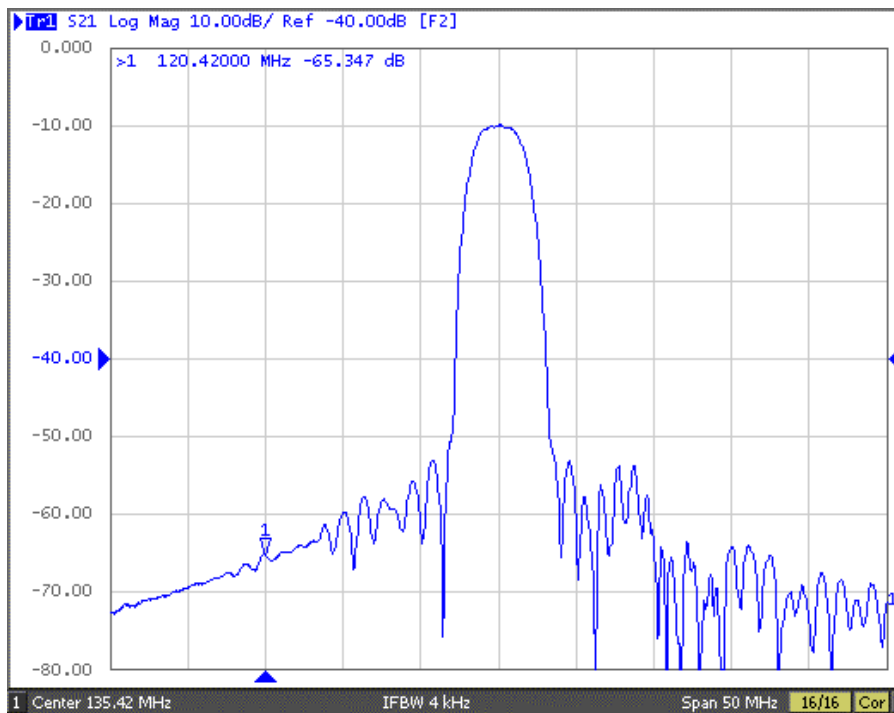
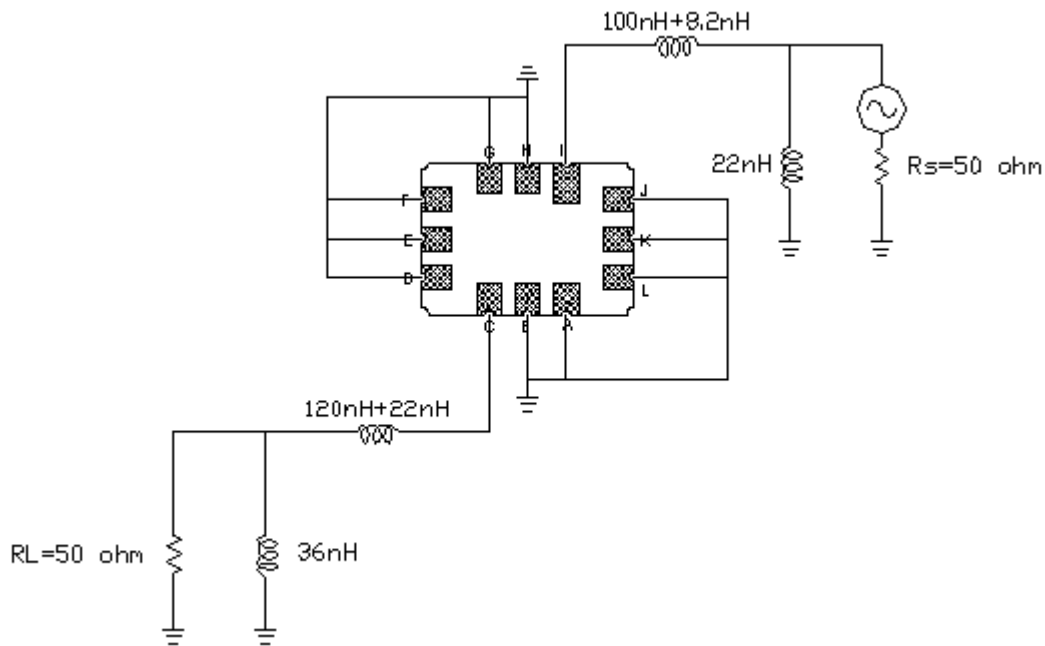


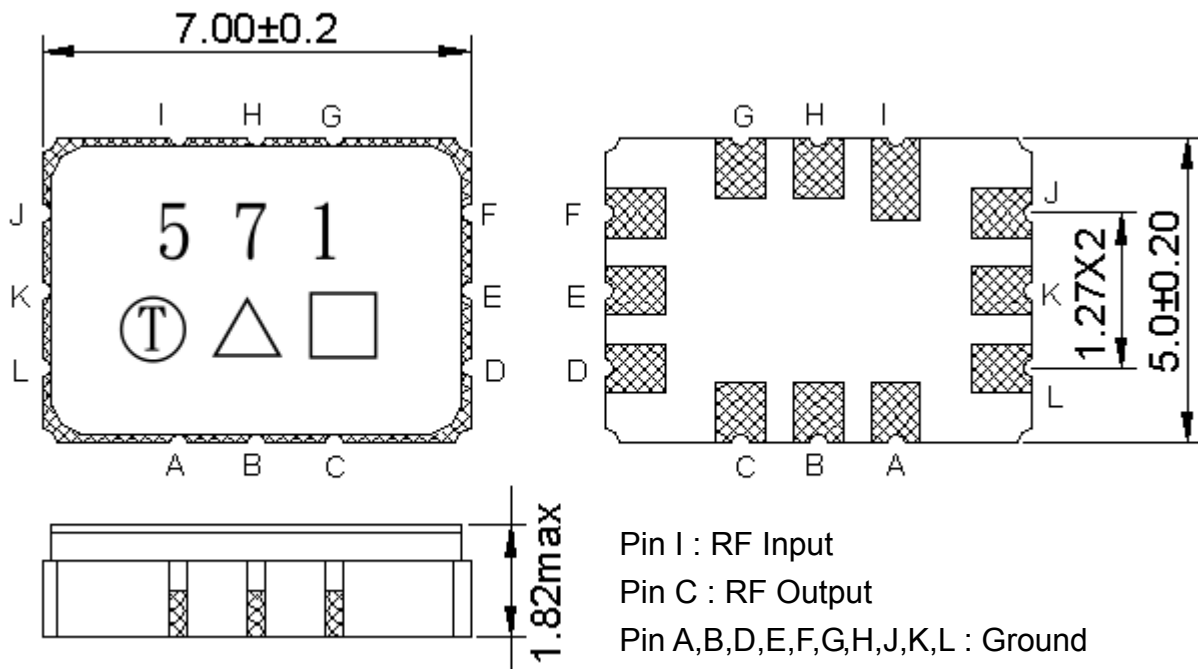
Fig4. Horizontal: 5MHz/Div Vertical: 10dB/Div

E. MEASUREMENT CIRCUIT

1. Single ended input 50 ohm to Single ended Output 50 ohm



F. OUTLINE DRAWING:



Pin I : RF Input

Pin C : RF Output

Pin A,B,D,E,F,G,H,J,K,L : Ground

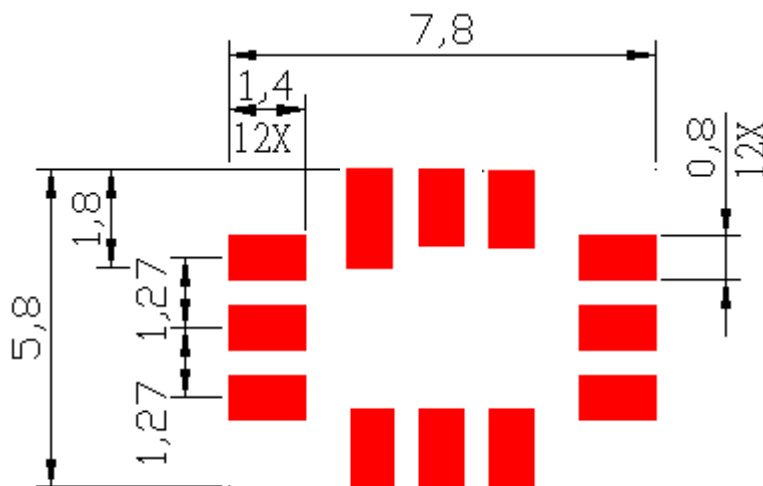
Unit: mm

□ : Week Code (Follow the table from planner each year)

△ : Product / Year Code

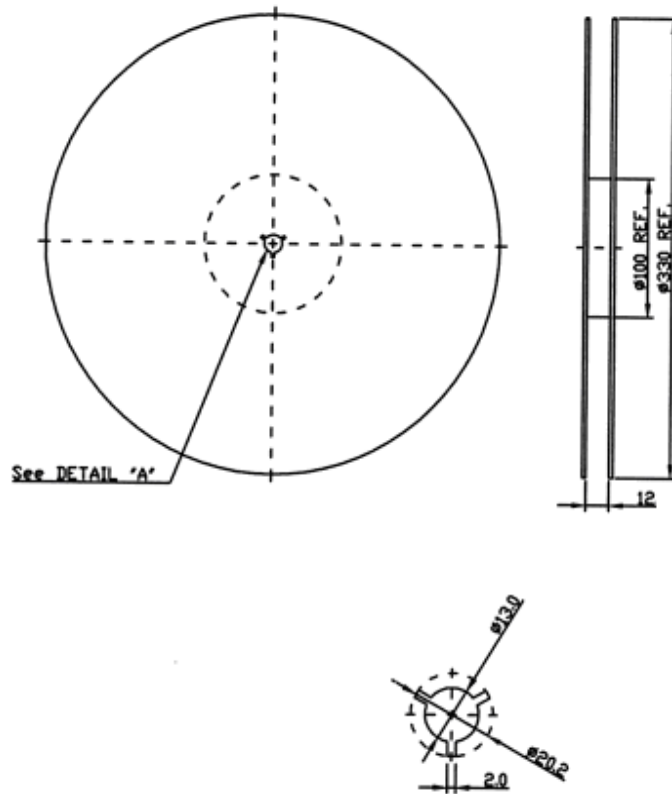
Year	2005 2009	2006 2010	2007 2011	2008 2012
Product Code	B	b	<u>B</u>	<u>b</u>

G. PCB Footprint

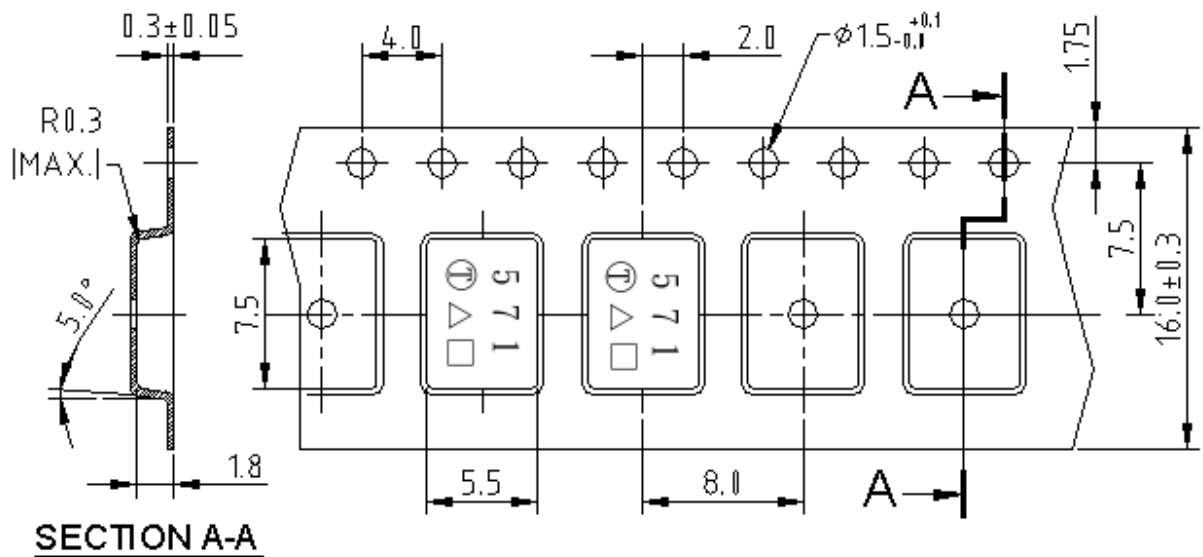


H. PACKING:

1. REEL DIMENSION



2. TAPE DIMENSION



I. RECOMMENDED REFLOW PROFILE_:

