

FEATURES AND SPECIFICATIONS

Features and Benefits

- Sizes 2 to 25 circuits
- Back ribs maintain position of connector housing in interim clip and panel mount, and prevent lateral movement when another housing is removed
- End-to-end stackable inside a single row interim clip or panel mount to form a larger single row connector
- Side-to-side and end-to-end stackable inside a dual row interim clip or panel mount to form a dual row connector

Reference Information

Product Specification: PS-70058

Packaging: Bag

UL File No.: E29179

CSA File No.: LR19980

Mates With: 70004 and 70013 as connector assembly, and 70018, 70022 and 70104 as pin assembly

Use With: 70021, 70058 and 71851 crimp terminals

Designed In: Inches

Physical

Housing: Black glass-filled polyester, UL 94V-0

Operating Temperature: -40 to +105°C



2.54mm (.100") Pitch

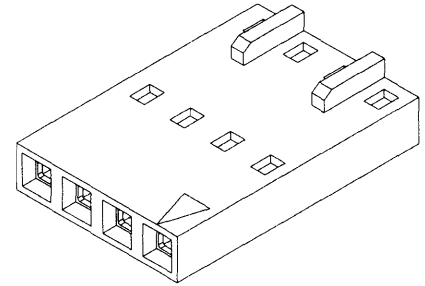
SL™

Crimp Housing

70066

Single Row

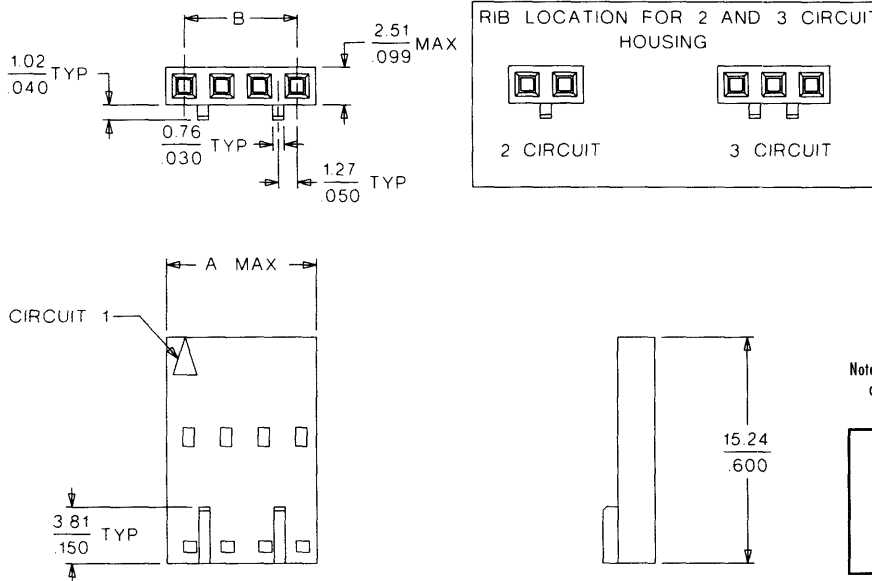
Version D, Back Ribs



2.54mm (.100") Pitch

CATALOG DRAWING (FOR REFERENCE ONLY)

Not For Use With C-Grid III™ Components



Note: The circuit 1 indicator for the 70066D will be superseded by the circuit 1 indicator of the 70004 and 70013 interim clips

Delivered on a carrier with 20 pieces per strip.

Actual Size



Universal Polarizing Pin
40713-1

Order No. 15-04-0292

ORDERING INFORMATION AND DIMENSIONS

Circuits	Order No.	Dimension	
		A	B
2	• 50-57-9302	5.05 (.199)	2.54 (.100)
3	• 50-57-9303	7.59 (.299)	5.08 (.200)
4	• 50-57-9304	10.13 (.399)	7.62 (.300)
5	• 50-57-9305	12.67 (.499)	10.16 (.400)
6	• 50-57-9306	15.21 (.599)	12.70 (.500)
7	• 50-57-9307	17.75 (.699)	15.24 (.600)
8	• 50-57-9308	20.29 (.799)	17.78 (.700)
9	• 50-57-9309	22.83 (.899)	20.32 (.800)
10	• 50-57-9310	25.37 (.999)	22.86 (.900)
11	• 50-57-9311	27.91 (1.099)	25.40 (1.000)
12	• 50-57-9312	30.45 (1.199)	27.94 (1.100)
13	• 50-57-9313	32.99 (1.299)	30.48 (1.200)

Circuits	Order No.	Dimension	
		A	B
14	• 50-57-9314	35.53 (1.399)	33.02 (1.300)
15	• 50-57-9315	38.07 (1.499)	35.56 (1.400)
16	• 50-57-9316	40.61 (1.599)	38.10 (1.500)
17	• 50-57-9317	43.15 (1.699)	40.64 (1.600)
18	• 50-57-9318	45.69 (1.799)	43.18 (1.700)
19	• 50-57-9319	48.23 (1.899)	45.72 (1.800)
20	• 50-57-9320	50.77 (1.999)	48.26 (1.900)
21	• 50-57-9321	53.31 (2.099)	50.80 (2.000)
22	• 50-57-9322	55.85 (2.199)	53.34 (2.100)
23	• 50-57-9323	58.39 (2.299)	55.88 (2.200)
24	• 50-57-9324	60.93 (2.399)	58.42 (2.300)
25	• 50-57-9325	63.47 (2.499)	60.96 (2.400)

• US Standard Product, available through Molex franchised distributors