

## Cemented Wirewound Resistors with Lugs



### FEATURES

- Complete welded construction
- Ceramic core
- Available in adjustable = "E" or non inductive design = "Ni"
- Lugs with various termination styles for soldering or bolt connection
- Compliant to RoHS Directive 2002/95/EC



**RoHS**  
COMPLIANT  
**GREEN**  
(5-2009)\*\*

### STANDARD ELECTRICAL SPECIFICATIONS

MODEL	VARIANT/ TERMINAL	POWER RATING $P_{40^{\circ}\text{C}}$	LIMITING VOLTAGE	RESISTANCE RANGE <sup>(1)</sup>		TOLERANCE
				TCR - 10 ... - 80 ppm/K	TCR 100 ... 180 ppm/K	
ZWS6	SL	6 W	$\sqrt{P \times R}$	0.82 $\Omega$ to 5.1 k $\Omega$	1.8 $\Omega$ to 13 k $\Omega$	$\pm 10\%$ , $\pm 5\%$
	E SL			2.7 $\Omega$ to 5.1 k $\Omega$	-	$\pm 2\%$
	Ni SL			0.82 $\Omega$ to 130 $\Omega$	1.8 $\Omega$ to 4.7 k $\Omega$	$\pm 10\%$ , $\pm 5\%$
				0.15 $\Omega$ to 910 $\Omega$	0.33 $\Omega$ to 2.4 k $\Omega$	$\pm 10\%$
ZWS8	SL, SS	8 W	$\sqrt{P \times R}$	1 $\Omega$ to 910 $\Omega$	2 $\Omega$ to 2.4 k $\Omega$	$\pm 5\%$
	E SL, E SS			0.68 $\Omega$ to 7.5 k $\Omega$	1.8 $\Omega$ to 20 k $\Omega$	$\pm 10\%$ , $\pm 5\%$
	Ni SL, Ni SS			3.3 $\Omega$ to 7.5 k $\Omega$	-	$\pm 2\%$
				0.62 $\Omega$ to 200 $\Omega$	1.8 $\Omega$ to 6.8 k $\Omega$	$\pm 10\%$ , $\pm 5\%$
ZWS12	SL, SS	12 W	$\sqrt{P \times R}$	0.24 $\Omega$ to 1.3 k $\Omega$	0.56 $\Omega$ to 3.6 k $\Omega$	$\pm 10\%$
	E SL, E SS			1 $\Omega$ to 1.3 k $\Omega$	2 $\Omega$ to 3.6 k $\Omega$	$\pm 5\%$
	Ni SL, Ni SS			0.62 $\Omega$ to 10 k $\Omega$	1.8 $\Omega$ to 27 k $\Omega$	$\pm 10\%$ , $\pm 5\%$
				3 $\Omega$ to 10 k $\Omega$	-	$\pm 2\%$
ZWS15	SL, SS	15 W	$\sqrt{P \times R}$	0.56 $\Omega$ to 270 $\Omega$	1.8 $\Omega$ to 9.1 k $\Omega$	$\pm 10\%$ , $\pm 5\%$
	E SL, E SS			0.33 $\Omega$ to 1.8 k $\Omega$	0.75 $\Omega$ to 5.1 k $\Omega$	$\pm 10\%$
	Ni SL, Ni SS			1 $\Omega$ to 1.8 k $\Omega$	2 $\Omega$ to 5.1 k $\Omega$	$\pm 5\%$
				0.68 $\Omega$ to 12 k $\Omega$	2.2 $\Omega$ to 33 k $\Omega$	$\pm 10\%$ , $\pm 5\%$
ZWS20	SL, SS, SB, FST	20 W	$\sqrt{P \times R}$	2.2 $\Omega$ to 12 k $\Omega$	-	$\pm 2\%$
	E SL, E SS, E SB, E FST			0.68 $\Omega$ to 330 $\Omega$	2.2 $\Omega$ to 11 k $\Omega$	$\pm 10\%$ , $\pm 5\%$
	Ni SL, Ni SS, Ni SB, Ni FST			0.39 $\Omega$ to 2.2 k $\Omega$	0.82 $\Omega$ to 6.2 k $\Omega$	$\pm 10\%$
				1 $\Omega$ to 2.2 k $\Omega$	2.0 $\Omega$ to 6.2 k $\Omega$	$\pm 5\%$
ZWS35	SL, SS, SB, FST	35 W	$\sqrt{P \times R}$	0.62 $\Omega$ to 16 k $\Omega$	1.3 $\Omega$ to 43 k $\Omega$	$\pm 10\%$ , $\pm 5\%$
	E SL, E SS, E SB, E FST			2.7 $\Omega$ to 16 k $\Omega$	-	$\pm 2\%$
	Ni SL, Ni SS, Ni SB, Ni FST			0.62 $\Omega$ to 430 $\Omega$	1.3 $\Omega$ to 15 k $\Omega$	$\pm 10\%$ , $\pm 5\%$
				0.47 $\Omega$ to 2.7 k $\Omega$	1.1 $\Omega$ to 8.2 k $\Omega$	$\pm 10\%$
ZWS50	SL, SS, SB, FST	50 W	$\sqrt{P \times R}$	1 $\Omega$ to 2.7 k $\Omega$	2 $\Omega$ to 8.2 k $\Omega$	$\pm 5\%$
	E SL, E SS, E SB, E FST			1.1 $\Omega$ to 30 k $\Omega$	2.7 $\Omega$ to 82 k $\Omega$	$\pm 10\%$ , $\pm 5\%$
	Ni SL, Ni SS, Ni SB, Ni FST			1.3 $\Omega$ to 30 k $\Omega$	-	$\pm 2\%$
				1.1 $\Omega$ to 750 $\Omega$	2.7 $\Omega$ to 27 k $\Omega$	$\pm 10\%$ , $\pm 5\%$
ZWS100	SS, SSB, SB, FST	100 W	$\sqrt{P \times R}$	0.91 $\Omega$ to 5.1 k $\Omega$	2 $\Omega$ to 15 k $\Omega$	$\pm 10\%$ , $\pm 5\%$
	E SS, E SSB, E SB, E FST			1.3 $\Omega$ to 33 k $\Omega$	3 $\Omega$ to 91 k $\Omega$	$\pm 10\%$ , $\pm 5\%$
	Ni SS, Ni SSB, Ni SB, Ni FST			2.2 $\Omega$ to 33 k $\Omega$	-	$\pm 2\%$
				1.3 $\Omega$ to 910 $\Omega$	3 $\Omega$ to 33 k $\Omega$	$\pm 10\%$ , $\pm 5\%$
ZWS100	SS, SSB, SB, FST	100 W	$\sqrt{P \times R}$	1.1 $\Omega$ to 6.2 k $\Omega$	2.4 $\Omega$ to 16 k $\Omega$	$\pm 10\%$ , $\pm 5\%$
	E SS, E SSB, E SB, E FST			2.7 $\Omega$ to 68 k $\Omega$	6.2 $\Omega$ to 68 k $\Omega$	$\pm 10\%$ , $\pm 5\%$
	Ni SS, Ni SSB, Ni SB, Ni FST			2.7 $\Omega$ to 68 k $\Omega$	-	$\pm 2\%$
				2.7 $\Omega$ to 1.8 k $\Omega$	6.2 $\Omega$ to 68 k $\Omega$	$\pm 10\%$ , $\pm 5\%$
ZWS100	SS, SSB, SB, FST	100 W	$\sqrt{P \times R}$	2.2 $\Omega$ to 13 k $\Omega$	4.7 $\Omega$ to 33 k $\Omega$	$\pm 10\%$ , $\pm 5\%$
	E SS, E SSB, E SB, E FST			2.2 $\Omega$ to 13 k $\Omega$	4.7 $\Omega$ to 33 k $\Omega$	$\pm 10\%$ , $\pm 5\%$

#### Notes

<sup>(1)</sup> Resistance value to be selected for  $\pm 10\%$  tolerance from E12 and for  $\pm 5\%$  and  $\pm 2\%$  from E24

- For available "Mounting Accessories for Resistors", please see: [www.vishay.com/ppg?21015](http://www.vishay.com/ppg?21015)

\*\* Please see document "Vishay Material Category Policy": [www.vishay.com/doc?99902](http://www.vishay.com/doc?99902)



STANDARD ELECTRICAL SPECIFICATIONS							
MODEL	VARIANT/ TERMINAL	POWER RATING $P_{40\text{ }^\circ\text{C}}$	LIMITING VOLTAGE	RESISTANCE RANGE <sup>(1)</sup>		TOLERANCE	
				TCR - 10 ... - 80 ppm/K	TCR 100 ... 180 ppm/K		
ZWS150	SS, SSB, SB, FST	150 W	$\sqrt{P \times R}$	4.7 $\Omega$ to 130 k $\Omega$	11 $\Omega$ to 360 k $\Omega$	$\pm 10\%$ , $\pm 5\%$	
	E SS, E SSB, E SB, E FST				-	$\pm 2\%$	
	Ni SS, Ni SSB, Ni SB, Ni FST				4.7 $\Omega$ to 3.3 k $\Omega$	11 $\Omega$ to 120 k $\Omega$	$\pm 10\%$ , $\pm 5\%$
ZWS250	SS, SSB, SB, FST	250 W	$\sqrt{P \times R}$	8.2 $\Omega$ to 220 k $\Omega$	3.9 $\Omega$ to 22 k $\Omega$	9.1 $\Omega$ to 62 k $\Omega$	$\pm 10\%$ , $\pm 5\%$
	E SS, E SSB, E SB, E FST				20 $\Omega$ to 620 k $\Omega$	-	$\pm 2\%$
	Ni SS, Ni SSB, Ni SB, Ni FST				8.2 $\Omega$ to 6.2 k $\Omega$	20 $\Omega$ to 220 k $\Omega$	$\pm 10\%$ , $\pm 5\%$
ZWS30/100	SS, SSB, SB, FST	75 W	$\sqrt{P \times R}$	2.4 $\Omega$ to 62 k $\Omega$	6.8 $\Omega$ to 39 k $\Omega$	15 $\Omega$ to 110 k $\Omega$	$\pm 10\%$ , $\pm 5\%$
	E SS, E SSB, E SB, E FST				2.4 $\Omega$ to 62 k $\Omega$	5.1 $\Omega$ to 180 k $\Omega$	$\pm 10\%$ , $\pm 5\%$
	Ni SS, Ni SSB, Ni SB, Ni FST				3 $\Omega$ to 62 k $\Omega$	-	$\pm 2\%$
ZWS30/133	SS, SSB, SB, FST	110 W	$\sqrt{P \times R}$	3.3 $\Omega$ to 91 k $\Omega$	2.4 $\Omega$ to 1.6 k $\Omega$	5.1 $\Omega$ to 56 k $\Omega$	$\pm 10\%$ , $\pm 5\%$
	E SS, E SSB, E SB, E FST				2 $\Omega$ to 11 k $\Omega$	4.3 $\Omega$ to 30 k $\Omega$	$\pm 10\%$ , $\pm 5\%$
	Ni SS, Ni SSB, Ni SB, Ni FST				3.3 $\Omega$ to 2.4 k $\Omega$	7.5 $\Omega$ to 240 k $\Omega$	$\pm 10\%$ , $\pm 5\%$
ZWS30/133	SS, SSB, SB, FST	110 W	$\sqrt{P \times R}$	2.7 $\Omega$ to 16 k $\Omega$	3.3 $\Omega$ to 2.4 k $\Omega$	7.5 $\Omega$ to 82 k $\Omega$	$\pm 10\%$ , $\pm 5\%$
	E SS, E SSB, E SB, E FST				7.5 $\Omega$ to 240 k $\Omega$	-	$\pm 2\%$
	Ni SS, Ni SSB, Ni SB, Ni FST				6.2 $\Omega$ to 43 k $\Omega$	6.2 $\Omega$ to 43 k $\Omega$	$\pm 10\%$ , $\pm 5\%$

**Notes**

- (1) Resistance value to be selected for  $\pm 10\%$  tolerance from E12 and for  $\pm 5\%$  and  $\pm 2\%$  from E24
- For available "Mounting Accessories for Resistors", please see: [www.vishay.com/ppg?21010](http://www.vishay.com/ppg?21010)

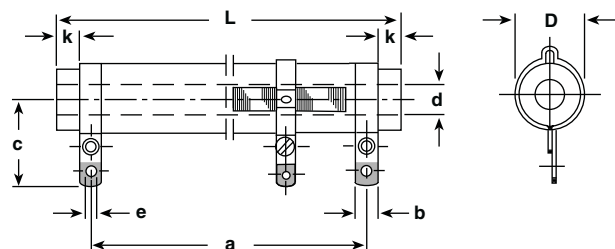
PART NUMBER AND PRODUCT DESCRIPTION																	
Part Number: ZWS006331001KLX000																	
Z	W	S	0	0	6	3	3	1	0	0	1	K	L	X	0	0	0
MODEL	VARIANT/ TERMINAL	TCR/MATERIAL	VALUE	TOLERANCE CODE	PACKAGING CODE	SPECIAL											
<b>ZWS006</b> = ZWS6 <b>ZWS008</b> = ZWS8 <b>ZWS012</b> = ZWS12 <b>ZWS015</b> = ZWS15 <b>ZWS020</b> = ZWS20 <b>ZWS035</b> = ZWS35 <b>ZWS050</b> = ZWS50 <b>ZWS100</b> = ZWS100 <b>ZWS150</b> = ZWS150 <b>ZWS250</b> = ZWS250 <b>ZWSN68</b> = ZWS6/30 <b>ZWSN84</b> = ZWS30/100 <b>ZWSN91</b> = ZWS30/133 <b>ZWSN94</b> = ZWS30/145 <b>ZWSN97</b> = ZWS30/235 <b>ZWSN98</b> = ZWS50/165 <b>ZWSOSM</b> = ZWS10/30  (Note: Ni is also known as SWI)	<b>3</b> = SL <b>4</b> = SS <b>5</b> = SB <b>6</b> = SSB <b>7</b> = FST <b>8</b> = E SL <b>9</b> = E SS <b>A</b> = E SB <b>B</b> = E SSB <b>C</b> = E FST <b>D</b> = Ni SL <b>E</b> = Ni SS <b>F</b> = Ni SB <b>G</b> = Ni SSB <b>H</b> = Ni FST <b>I</b> = GSCH <b>Z</b> = Value overflow (BV)	<b>1</b> = - 10 ... - 80 ppm/K WM 50 Class 1 <b>3</b> = 100 ... 180 ppm/K WM 110 Class 3 <b>0</b> = SWI	<b>3 digit value</b> <b>1 digit multiplier</b> <b>MULTIPLIER</b> <b>7</b> = $10^{-3}$ <b>8</b> = $10^{-2}$ <b>9</b> = $10^{-1}$ <b>0</b> = $10^0$ <b>1</b> = $10^1$ <b>2</b> = $10^2$ <b>3</b> = $10^3$	<b>G</b> = $\pm 2.0\%$ <b>J</b> = $\pm 5.0\%$ <b>K</b> = $\pm 10.0\%$ <b>0</b> = by BV	<b>LX</b> = Loose pack, without quantity <b>ZX</b> = Special pack (with BV #), without quantity	The 5 digit BV number will be encoded using a 36 character code. This code contains numbers 0...9 and letters A...Z (36 characters total) and allows to encode at least 46 655 five digit BV numbers. <b>000</b> = Standard											
Product Description: ZWS6 SL 3 1K0 10% LX																	
ZWS6	SL	3	1K0	10%	LX												
MODEL <sup>(1)</sup>	VARIANT/ TERMINAL <sup>(1)</sup>	TCR/MATERIAL <sup>(1)</sup>	VALUE <sup>(1)</sup>	TOLERANCE CODE <sup>(1)</sup>	PACKAGING DESCRIPTION <sup>(2)</sup>												

**Notes**

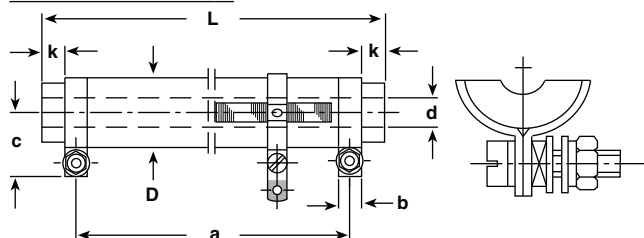
- (1) See "Part Number" above
- (2) See "Packaging Code" above

**DIMENSIONS**

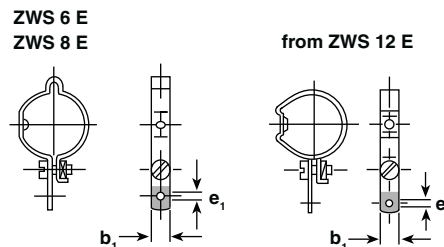
**SL TERMINALS**



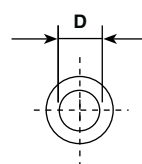
**SS TERMINALS**



**ADJUSTABLE LUGS**



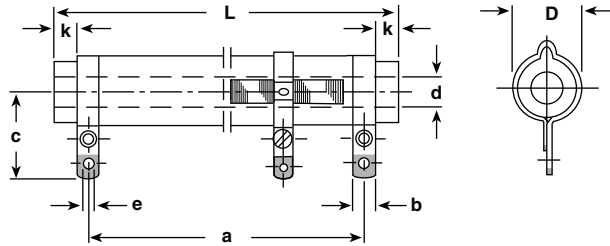
**CORE SECTION**



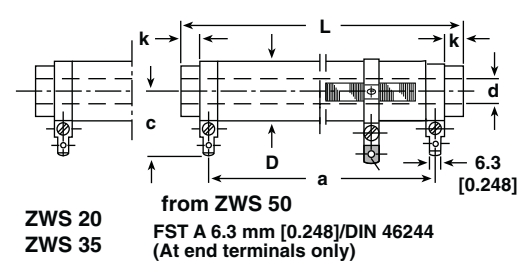
MODEL	DIMENSIONS in millimeters [inches]							
	ZWS 6 ZWS 6 E ZWS 6 Ni		ZWS 8 ZWS 8 E ZWS 8 Ni		ZWS 12 ZWS 12 E ZWS 12 Ni		ZWS 15 ZWS 15 E ZWS 15 Ni	
TERMINAL	SL		SL	SS	SL	SS	SL	SS
DIMENSION D	7.5 ± 0.5 [0.295 ± 0.020]		9.5 ± 0.5 [0.374 ± 0.020]		11.8 ± 0.8 [0.465 ± 0.031]		11.8 ± 0.8 [0.465 ± 0.031]	
L	45 ± 1.5 [1.772 ± 0.059]		50 ± 1.5 [1.969 ± 0.059]		55 ± 1.5 [2.165 ± 0.059]		62 ± 2 [2.441 ± 0.079]	
a	36 [1.417]	39 [1.535]	40 [1.575]	43 [1.693]	44 [1.732]	50 [1.969]	51 [2.008]	
b	4 [0.157]	4 [0.157]	5 [0.197]	4 [0.157]	5 [0.197]	4 [0.157]	5 [0.197]	
b <sub>1</sub>	4 [0.157]	4 [0.157]	4 [0.157]	5 [0.197]	5 [0.197]	5 [0.197]	5 [0.197]	
c	15.5 [0.610]	18 [0.709]	10.5 [0.413]	19 [0.748]	11.5 [0.453]	19 [0.748]	11.5 [0.453]	
d	2.6 [0.102]	3.5 [0.138]	3.5 [0.138]	5.5 [0.217]	5.5 [0.217]	5.5 [0.217]	5.5 [0.217]	
e	1.5 [0.059]	2 [0.079]	M3 × 12	2 [0.079]	M3 × 12	2 [0.079]	M3 × 12	
e <sub>1</sub>	2.8 [0.110]	2.8 [0.110]	2.8 [0.110]	2.8 [0.110]	2.8 [0.110]	2.8 [0.110]	2.8 [0.110]	
k	2.5 [0.098]	3.5 [0.138]	2.5 [0.098]	4 [0.157]	3 [0.118]	4 [0.157]	3 [0.118]	
MASS (g)	5		6.5		11.5		12.5	

**DIMENSIONS (continued)**

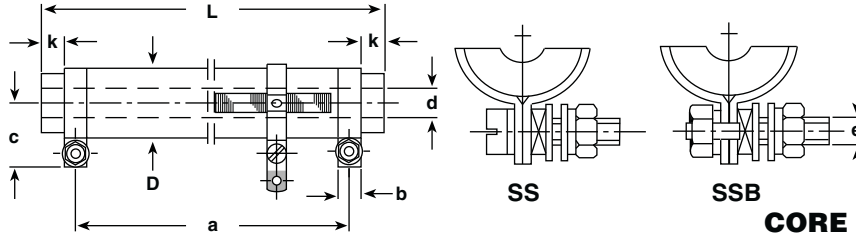
**SL TERMINALS**



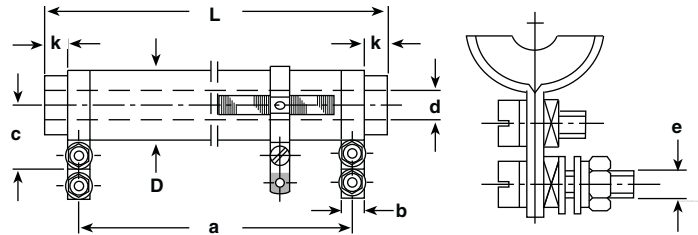
**FST TERMINALS**



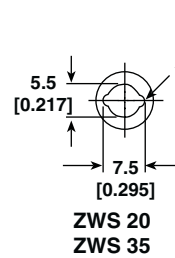
**SS AND SSB TERMINALS**



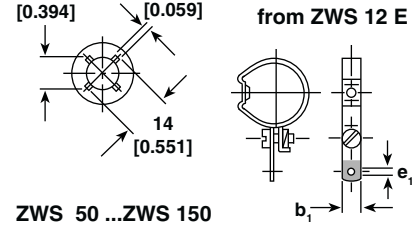
**SB TERMINALS**



**CORE SECTION**



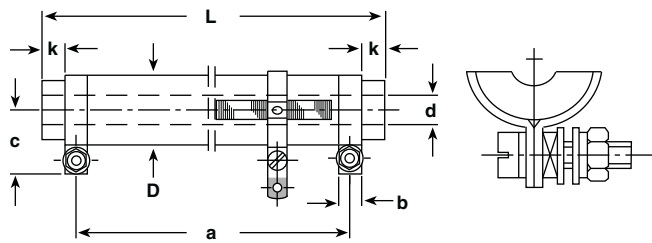
**ADJUSTABLE LUGS**



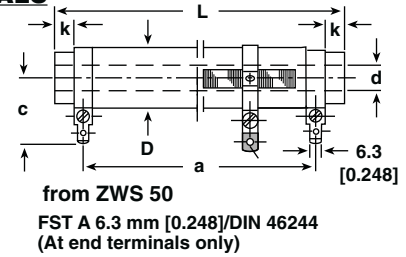
MODEL	DIMENSIONS in millimeters [inches]															
	ZWS 20 ZWS 20 E ZWS 20 Ni				ZWS 35 ZWS 35 E ZWS 35 Ni				ZWS 50 ZWS 50 E ZWS 50 Ni				ZWS 100 ZWS 100 E ZWS 100 Ni			
TERMINAL	SL	SS	SB	FST	SL	SS	SB	FST	SS	SSB	SB	FST	SS	SSB	SB	FST
DIMENSION D	14.8 ± 0.8 [0.583 ± 0.031]				14.8 ± 0.8 [0.583 ± 0.031]				22.3 ± 1.3 [0.878 ± 0.051]				22.3 ± 1.3 [0.878 ± 0.051]			
L	62 ± 2 [2.441 ± 0.079]				100 ± 2 [3.937 ± 0.079]				100 ± 2 [3.937 ± 0.079]				165 ± 2 [6.496 ± 0.079]			
a ± 2 [a ± 0.079]	50 [1.969]	51 [2.008]	51 [2.008]	48 [1.890]	86 [3.386]	87 [3.425]	87 [3.425]	84 [3.307]	71 [2.795]				136 [5.354]			
b	4 [0.157]	5 [0.197]	5 [0.197]	6.3 [0.248]	4 [0.157]	5 [0.197]	5 [0.197]	6.3 [0.248]	8 [0.315]	8 [0.315]	8 [0.315]	6.3 [0.248]	8 [0.315]	8 [0.315]	8 [0.315]	6.3 [0.248]
b <sub>1</sub>	5 [0.197]	5 [0.197]	5 [0.197]	5 [0.197]	5 [0.197]	5 [0.197]	5 [0.197]	5 [0.197]	5 [0.197]	5 [0.197]	5 [0.197]	5 [0.197]	5 [0.197]	5 [0.197]	5 [0.197]	5 [0.197]
c	20.5 [0.807]	13 [0.512]	23 [0.906]	23.5 [0.925]	20.5 [0.807]	13 [0.512]	23 [0.906]	23.5 [0.925]	18.5 [0.728]	18.5 [0.728]	29.5 [1.161]	27 [1.063]	18.5 [0.728]	18.5 [0.728]	29.5 [1.161]	27 [1.063]
d	5.5 [0.217]	5.5 [0.217]	5.5 [0.217]	5.5 [0.217]	5.5 [0.217]	5.5 [0.217]	5.5 [0.217]	5.5 [0.217]	10 [0.394]	10 [0.394]	10 [0.394]	10 [0.394]	10 [0.394]	10 [0.394]	10 [0.394]	10 [0.394]
e	2 [0.079]	M3 × 12	M3 × 12	-	2 [0.079]	M3 × 12	M3 × 12	-	M4 × 16	M4 × 18	M4 × 16	-	M4 × 16	M4 × 18	M4 × 16	-
e <sub>1</sub>	3.2 [0.126]	3.2 [0.126]	3.2 [0.126]	3.2 [0.126]	3.2 [0.126]	3.2 [0.126]	3.2 [0.126]	3.2 [0.126]	3.2 [0.126]	3.2 [0.126]	3.2 [0.126]	3.2 [0.126]	3.2 [0.126]	3.2 [0.126]	3.2 [0.126]	3.2 [0.126]
k	4 [0.157]	3 [0.118]	3 [0.118]	3 [0.118]	5 [0.197]	4 [0.157]	4 [0.157]	4 [0.157]	10.5 [0.413]	10.5 [0.413]	10.5 [0.413]	10.5 [0.413]	10.5 [0.413]	10.5 [0.413]	10.5 [0.413]	10.5 [0.413]
MASS (g)	25				33				80				113			

**DIMENSIONS** (continued)

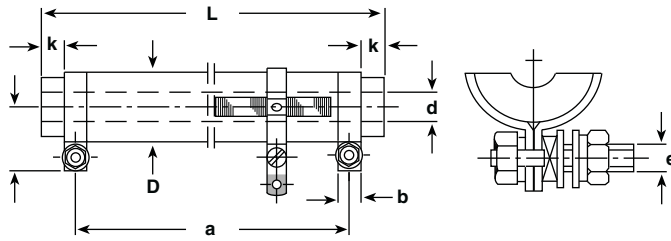
**SS TERMINALS**



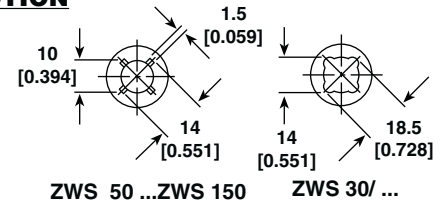
**FST TERMINALS**



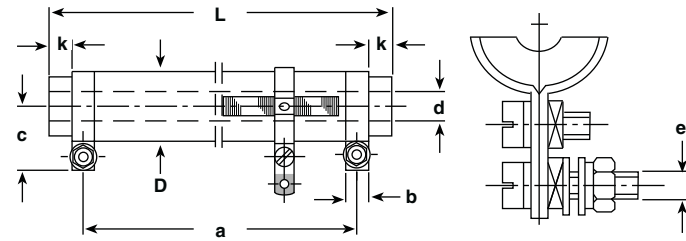
**SSB TERMINALS**



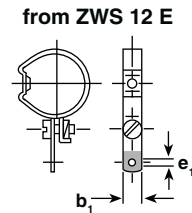
**CORE SECTION**



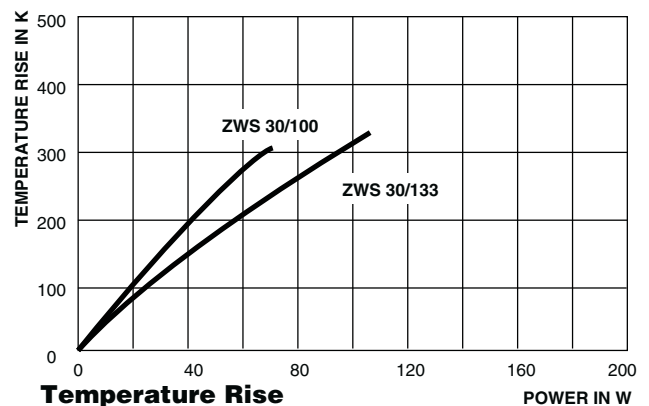
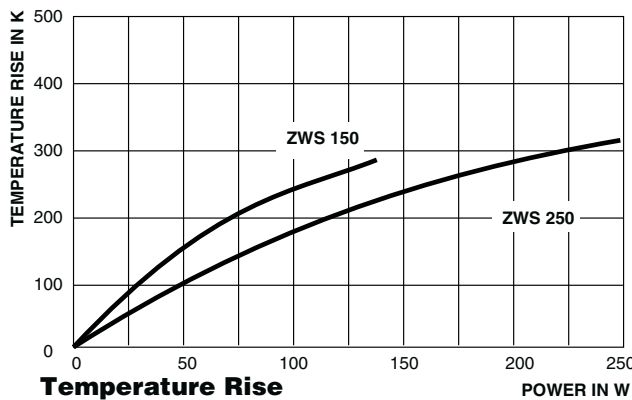
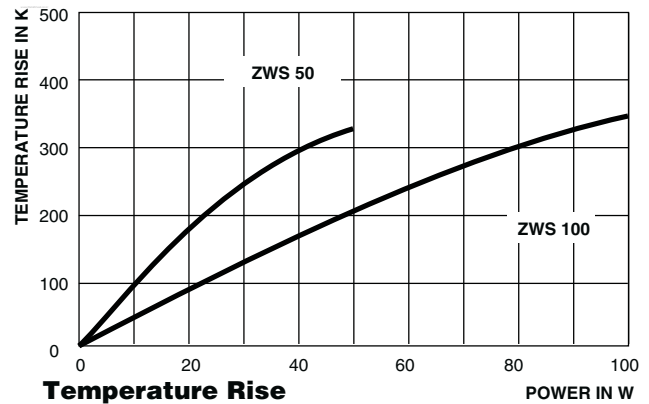
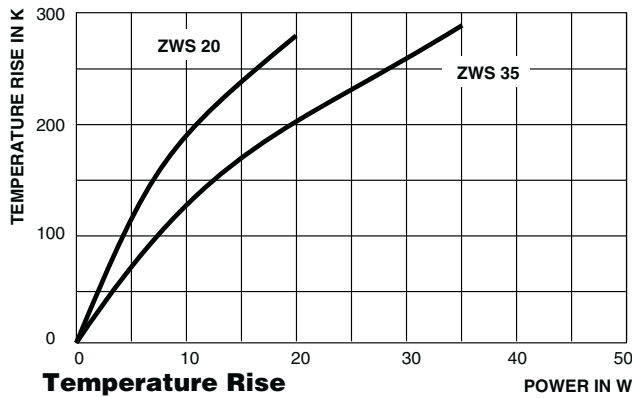
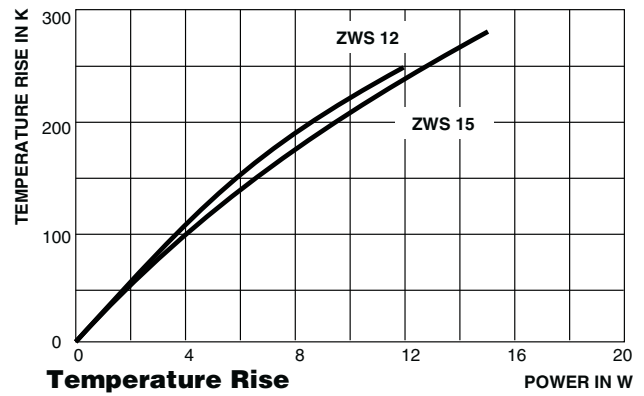
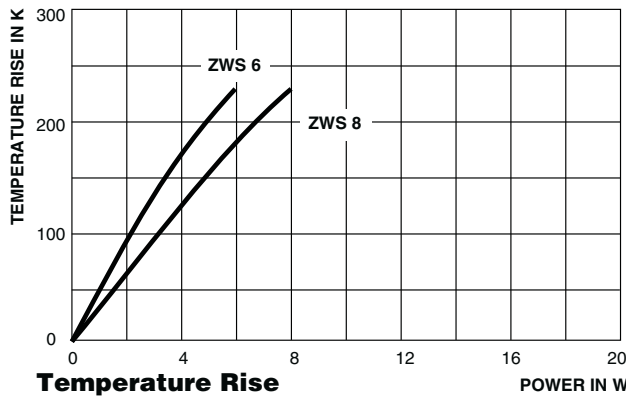
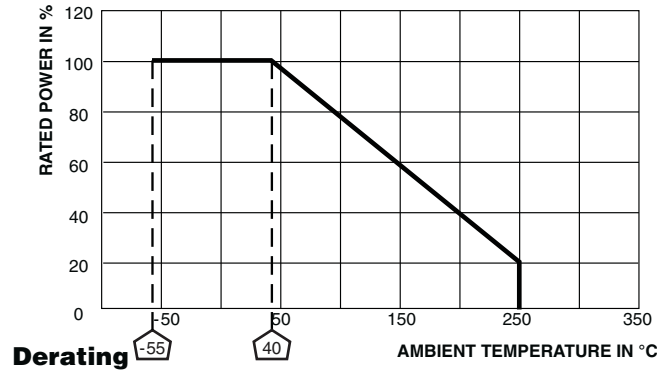
**SB TERMINALS**



**ADJUSTABLE LUGS**



MODEL	DIMENSIONS in millimeters [inches]															
	ZWS 150 ZWS 150 E ZWS 150 Ni				ZWS 250 ZWS 250 E ZWS 250 Ni				ZWS 30/100 ZWS 30/100 E ZWS 30/100 Ni				ZWS 30/133 ZWS 30/133 E ZWS 30/133 Ni			
TERMINAL	SS	SSB	SB	FST	SS	SSB	SB	FST	SS	SSB	SB	FST	SS	SSB	SB	FST
DIMENSION D	22.3 ± 1.3 [0.878 ± 0.051]				32.3 ± 1.5 [1.28 ± 0.059]				32.3 ± 1.5 [1.28 ± 0.059]				32.3 ± 1.5 [1.28 ± 0.059]			
L	265 ± 4 [10.433 ± 0.079]				330 ± 5 [12.992 ± 0.197]				100 ± 2.5 [3.937 ± 0.098]				133 ± 3 [5.236 ± 0.118]			
a	236 [9.291]				280 [11.024]				85 [3.346]				118 [4.646]			
b	8 [0.315]	8 [0.315]	8 [0.315]	6.3 [0.248]	8 [0.315]	8 [0.315]	8 [0.315]	6.3 [0.248]	8 [0.315]	8 [0.315]	8 [0.315]	6.3 [0.248]	8 [0.315]	8 [0.315]	8 [0.315]	6.3 [0.248]
b <sub>1</sub>	5 [0.197]	5 [0.197]	5 [0.197]	5 [0.197]	8 [0.315]	8 [0.315]	8 [0.315]	8 [0.315]	8 [0.315]	8 [0.315]	8 [0.315]	8 [0.315]	8 [0.315]	8 [0.315]	8 [0.315]	8 [0.315]
c	18.5 [0.728]	18.6 [0.732]	29.5 [1.161]	27 [1.063]	23.5 [0.925]	23.5 [0.925]	35 [1.378]	31.5 [1.24]	23.5 [0.925]	23.5 [0.925]	35 [1.378]	31.5 [1.24]	23.5 [0.925]	23.5 [0.925]	35 [1.378]	31.5 [1.24]
d	10 [0.394]	10 [0.394]	10 [0.394]	10 [0.394]	20 [0.787]	20 [0.787]	20 [0.787]	20 [0.787]	14 [0.551]	14 [0.551]	14 [0.551]	14 [0.551]	14 [0.551]	14 [0.551]	14 [0.551]	14 [0.551]
e	M4 × 16	M4 × 18	M4 × 16	-	M4 × 16	M4 × 18	M4 × 16	-	M4 × 16	M4 × 18	M4 × 16	-	M4 × 16	M4 × 18	M4 × 16	-
e <sub>1</sub>	3.2 [0.126]	3.2 [0.126]	3.2 [0.126]	3.2 [0.126]	4.2 [0.165]	4.2 [1.654]	4.2 [1.654]	4.2 [0.165]	4.2 [0.165]	4.2 [0.165]	4.2 [0.165]	4.2 [0.165]	4.2 [0.165]	4.2 [0.165]	4.2 [0.165]	4.2 [0.165]
k	10.5 [0.413]	10.5 [0.413]	10.5 [0.413]	10.5 [0.413]	21 [0.827]	21 [0.827]	21 [0.827]	21 [0.827]	3.5 [0.138]	3.5 [0.138]	3.5 [0.138]	3.5 [0.138]	3.5 [0.138]	3.5 [0.138]	3.5 [0.138]	3.5 [0.138]
MASS (g)	194				375				167				212			





## Disclaimer

ALL PRODUCT, PRODUCT SPECIFICATIONS AND DATA ARE SUBJECT TO CHANGE WITHOUT NOTICE TO IMPROVE RELIABILITY, FUNCTION OR DESIGN OR OTHERWISE.

Vishay Intertechnology, Inc., its affiliates, agents, and employees, and all persons acting on its or their behalf (collectively, "Vishay"), disclaim any and all liability for any errors, inaccuracies or incompleteness contained in any datasheet or in any other disclosure relating to any product.

Vishay makes no warranty, representation or guarantee regarding the suitability of the products for any particular purpose or the continuing production of any product. To the maximum extent permitted by applicable law, Vishay disclaims (i) any and all liability arising out of the application or use of any product, (ii) any and all liability, including without limitation special, consequential or incidental damages, and (iii) any and all implied warranties, including warranties of fitness for particular purpose, non-infringement and merchantability.

Statements regarding the suitability of products for certain types of applications are based on Vishay's knowledge of typical requirements that are often placed on Vishay products in generic applications. Such statements are not binding statements about the suitability of products for a particular application. It is the customer's responsibility to validate that a particular product with the properties described in the product specification is suitable for use in a particular application. Parameters provided in datasheets and/or specifications may vary in different applications and performance may vary over time. All operating parameters, including typical parameters, must be validated for each customer application by the customer's technical experts. Product specifications do not expand or otherwise modify Vishay's terms and conditions of purchase, including but not limited to the warranty expressed therein.

Except as expressly indicated in writing, Vishay products are not designed for use in medical, life-saving, or life-sustaining applications or for any other application in which the failure of the Vishay product could result in personal injury or death. Customers using or selling Vishay products not expressly indicated for use in such applications do so at their own risk and agree to fully indemnify and hold Vishay and its distributors harmless from and against any and all claims, liabilities, expenses and damages arising or resulting in connection with such use or sale, including attorneys fees, even if such claim alleges that Vishay or its distributor was negligent regarding the design or manufacture of the part. Please contact authorized Vishay personnel to obtain written terms and conditions regarding products designed for such applications.

No license, express or implied, by estoppel or otherwise, to any intellectual property rights is granted by this document or by any conduct of Vishay. Product names and markings noted herein may be trademarks of their respective owners.

## Material Category Policy

**Vishay Intertechnology, Inc. hereby certifies that all its products that are identified as RoHS-Compliant fulfill the definitions and restrictions defined under Directive 2011/65/EU of The European Parliament and of the Council of June 8, 2011 on the restriction of the use of certain hazardous substances in electrical and electronic equipment (EEE) - recast, unless otherwise specified as non-compliant.**

**Please note that some Vishay documentation may still make reference to RoHS Directive 2002/95/EC. We confirm that all the products identified as being compliant to Directive 2002/95/EC conform to Directive 2011/65/EU.**