



P/N: TS6121CS DATA SHEET

Feature



- Designed to meet IEEE 802.3u requirement , including 350uH OCL with 8mA bias.
- Operating temperature range: 0°C to +70°C.
- Storage temperature range: -25°C to +125°C.

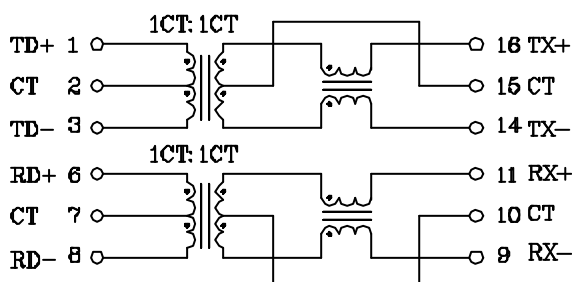
Electrical Specifications @ 25°C

Part Number	Turns Ratio (±5%)		OCL (uH Min) @ 100KHz/0.1V with 8mA DC Bias	C _{www} (pF Max)	L.L (uH Max)	Rise time (ns Max)	DCR (Max)		HI-POT (Vrms)
	1-3:16-14	6-8:11-9					1-3/6-8	16-14/11-9	
TS6121CS	1CT:1CT	1CT:1CT	350	20	0.4	2.5	0.7	1.1	1500

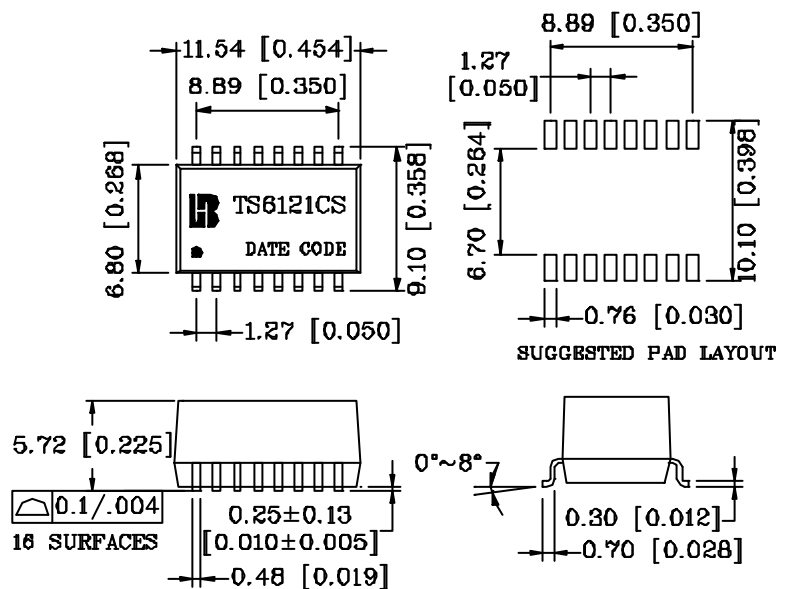
Continue

Part Number	Insertion Loss (dB Max)	Return Loss (dB Min)			Cross talk (dB Min)		DCMR (dB Min)
	0.3-100 MHz	30MHz	60MHz	80MHz	0.3-60MHz	60-100MHz	0.3-100MHz
TS6121CS	-1.0	-18	-15	-12	-45	-38	-40

Schematic



Mechanical



Units: mm[Inches] Tolerance: xx.x0±0.25[0.010]
0.xx±0.05[0.002]