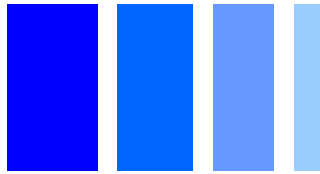


# SMD Power Inductor CDRH10D58R/A



*Under Development*



## Description

- Ferrite drum core construction.
- Magnetically shielded.
- L × W × H: 10.5 × 10.5 × 6.0 mm Max.
- Product weight: 2.2g(Ref.)
- Moisture Sensitivity Level: 1
- RoHS compliance.
- Qualified to AEC-Q200.

## Environmental Data

- Operating temperature range: -40°C ~ +125°C (excluding coil's self temperature rise)
- Storage temperature range: -40°C ~ +85°C
- Solder reflow temperature: 260 °C peak.

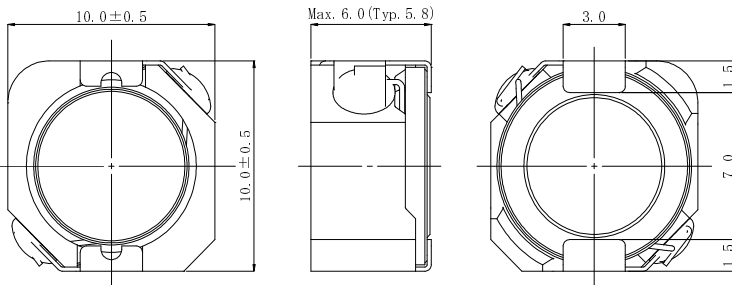
## Packaging

- Carrier tape and reel packaging

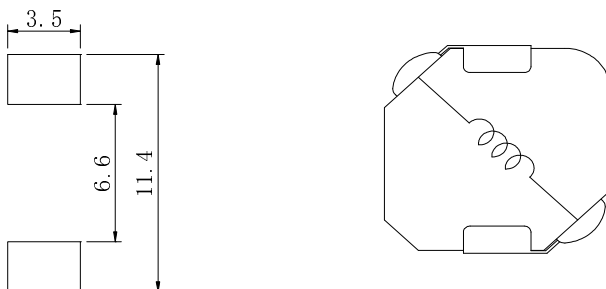
## Applications

- Automotive and other high temperature, high reliability application.

## Dimension - [mm]



## Land pattern and Schematics - [mm]



## Electrical Characteristics

PART NAME	STAMP	INDUCTANCE [WITHIN] ※1	D.C.R. (mΩ) MAX. (Typ.) (at 20°C)	Rated Current (A) ※2 (at 125°C)
CDRH10D58R/ANP-100MC	100	10 μH ± 20%	33(27)	2.84
CDRH10D58R/ANP-150MC	150	15 μH ± 20%	51(41)	2.24
CDRH10D58R/ANP-220MC	220	22 μH ± 20%	73(59)	1.90
CDRH10D58R/ANP-330MC	330	33 μH ± 20%	91(73)	1.77
CDRH10D58R/ANP-470MC	470	47 μH ± 20%	137(110)	1.34
CDRH10D58R/ANP-680MC	680	68 μH ± 20%	175(140)	1.29
CDRH10D58R/ANP-101MC	101	100 μH ± 20%	237(190)	1.08
CDRH10D58R/ANP-151MC	151	150 μH ± 20%	400(320)	0.79
CDRH10D58R/ANP-221MC	221	220 μH ± 20%	562(450)	0.66

※1. Measuring frequency: at 100kHz.

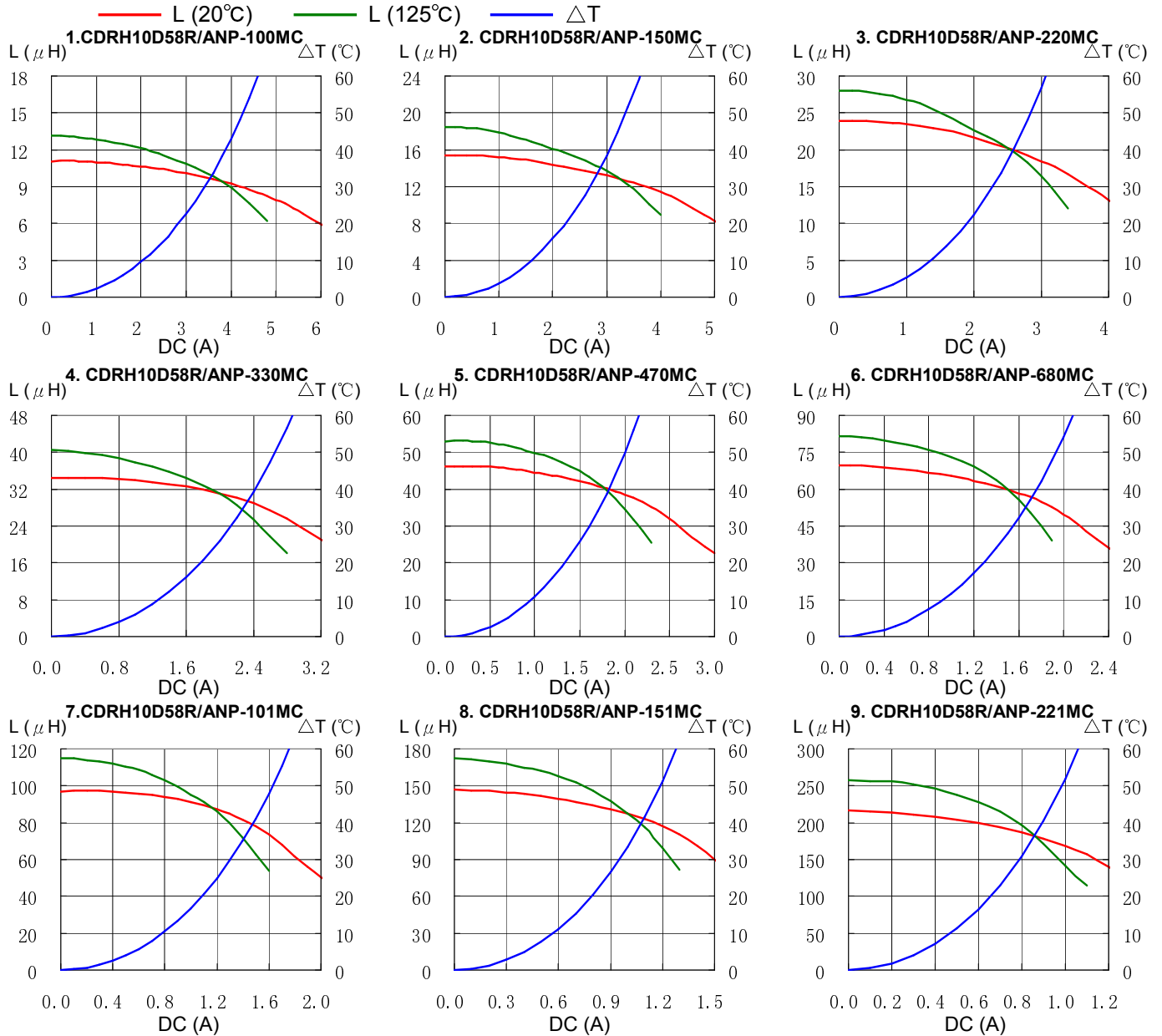
※2. Rated current: The DC current at which the inductance decreases to 65% of its nominal value or when Δt=30°C, whichever is lower (Ta=20°C).

# SMD Power Inductor CDRH10D58R/A



*Under Development*

## Saturation Current & Temperature Rise Graph



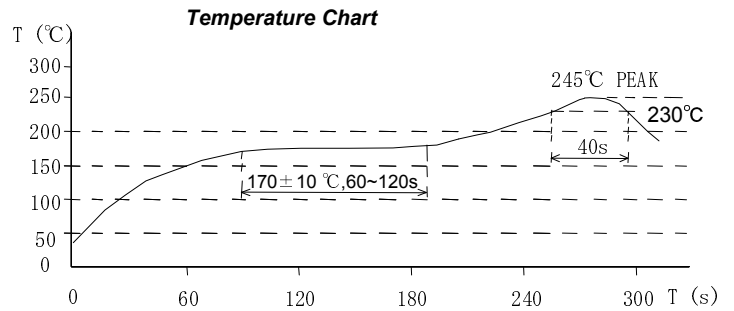
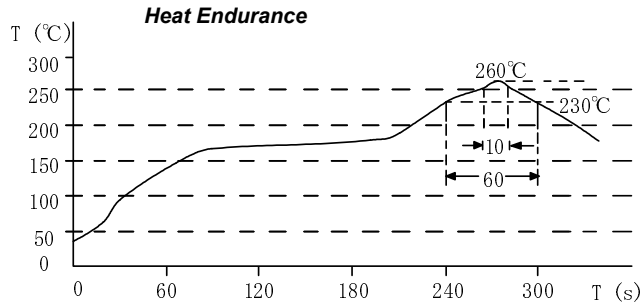
# SMD Power Inductor CDRH10D58R/A



 **sumida**

*Under Development*

## Solder Reflow Condition



Please refer to the sales offices on our website - <http://www.sumida.com>

### Hong Kong

Tel.+852-2880-6688  
FAX.+852-2565-9600  
[sales@hk.sumida.com](mailto:sales@hk.sumida.com)

### Tokyo

Tel.+81-3-5202-7112  
FAX.+81-3-5202-7105  
[sales@jp.sumida.com](mailto:sales@jp.sumida.com)

### Chicago

Tel.+1-847-545-6700  
FAX. +1-847-545-6720  
[sales@us.sumida.com](mailto:sales@us.sumida.com)

### Shanghai

Tel.+86-021-5836-3299  
FAX.+86-021-5836-3266  
[shanghai.sales@cn.sumida.com](mailto:shanghai.sales@cn.sumida.com)

### Seoul

Tel.+82-2-6237-0777  
FAX.+82-2-6237-0778  
[sales@kr.sumida.com](mailto:sales@kr.sumida.com)

### Oberzell

Tel.+49-8591-937-0  
FAX. +49-8591-937-103  
[contact@sumida-eu.com](mailto:contact@sumida-eu.com)

### Shenzhen

Tel.+86-755-8291-0228  
FAX.+86-755-8291-0338  
[shenzhen.sales@cn.sumida.com](mailto:shenzhen.sales@cn.sumida.com)

### Singapore

Tel.+65-6296-3388  
FAX.+65-6296-3390  
[sales@sg.sumida.com](mailto:sales@sg.sumida.com)

### Neumarkt

Tel.+49-9181-4509-110  
FAX. +49-9181-4509-310  
[infocomp@eu.sumida.com](mailto:infocomp@eu.sumida.com)

### Taipei

Tel.+886-2-8751-2737  
FAX.+886-2-8751-2738  
[sales@tw.sumida.com](mailto:sales@tw.sumida.com)

### San Jose

Tel.+1-408-321-9660  
FAX.+1-408-321-9308  
[sales@us.sumida.com](mailto:sales@us.sumida.com)