

TO-220AB

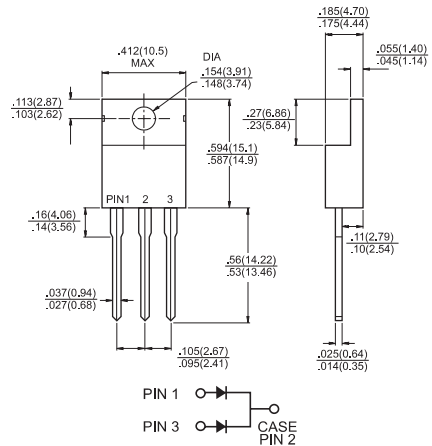


Features

- ◇ High efficiency, low VF
- ◇ High current capability
- ◇ High reliability
- ◇ High surge current capability
- ◇ Low power loss.
- ◇ For use in low voltage, high frequency inverter, free wheeling, and polarity protection application

Mechanical Data

- ◇ Cases: TO-220AB Molded plastic
- ◇ Epoxy: UL 94V-0 rate flame retardant
- ◇ Polarity: As marked
- ◇ High temperature soldering guaranteed:
260°C/10 seconds .16", (4.06mm) from case.
- ◇ Weight: 2.24 grams



Dimensions in inches and (millimeters)

Maximum Ratings and Electrical Characteristics

Rating at 25°C ambient temperature unless otherwise specified.

Single phase, half wave, 60 Hz, resistive or inductive load.

For capacitive load, derate current by 20%

Type Number	Symbol	SF	SF	SF	SF	SF	SF	SF	SF	Units
		2001G	2002G	2003G	2004G	2005G	2006G	2007G	2008G	
Maximum Recurrent Peak Reverse Voltage	V_{RRM}	50	100	150	200	300	400	500	600	V
Maximum RMS Voltage	V_{RMS}	35	70	105	140	210	280	350	420	V
Maximum DC Blocking Voltage	V_{DC}	50	100	150	200	300	400	500	600	V
Maximum Average Forward Rectified Current @ $T_c = 100^\circ\text{C}$	$I_{(AV)}$	20								A
Peak Forward Surge Current, 8.3 ms Single Half Sine-wave Superimposed on Rated Load (JEDEC method)	I_{FSM}	150								A
Maximum Instantaneous Forward Voltage @ 10A	V_F	0.975			1.3		1.7			V
Maximum DC Reverse Current @ $T_A=25^\circ\text{C}$ at Rated DC Blocking Voltage @ $T_A=100^\circ\text{C}$	I_R					5.0				uA uA
Maximum Reverse Recovery Time (Note 1)	T_{rr}					35				nS
Typical Junction Capacitance (Note 2)	C_j					80				pF
Typical Thermal Resistance (Note 3)	$R_{\theta JC}$					2.5				°C/W
Operating Temperature Range	T_J					-65 to +150				°C
Storage Temperature Range	T_{STG}					-65 to +150				°C

- Notes:
1. Reverse Recovery Test Conditions: $I_F=0.5A$, $I_R=1.0A$, $I_{RR}=0.25A$
 2. Measured at 1 MHz and Applied Reverse Voltage of 4.0 V D.C.
 3. Thermal Resistance from Junction to Case Mounted on Heatsink size of 3" x 5" x 0.25" Al-Plate.

RATINGS AND CHARACTERISTIC CURVES (SF2001G THRU SF2008G)

FIG.1- MAXIMUM FORWARD CURRENT DERATING CURVE

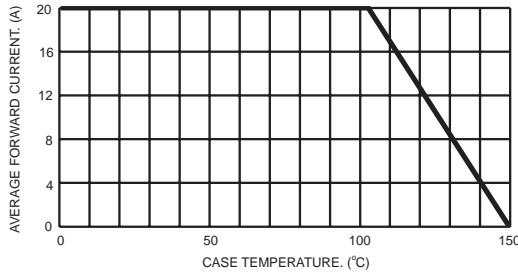


FIG.2- TYPICAL REVERSE CHARACTERISTICS

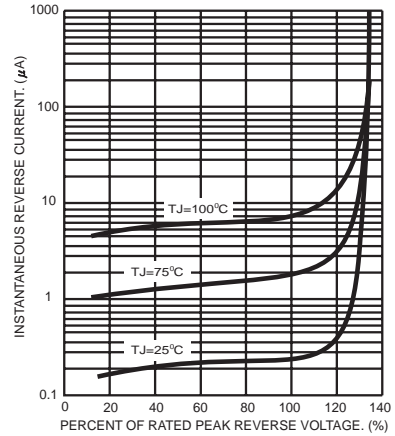


FIG.3- MAXIMUM NON-REPETITIVE FORWARD SURGE CURRENT PER LEG

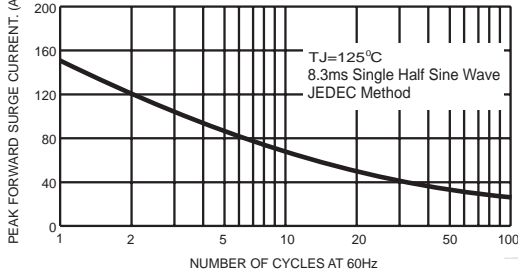


FIG.5- TYPICAL FORWARD CHARACTERISTICS PER LEG

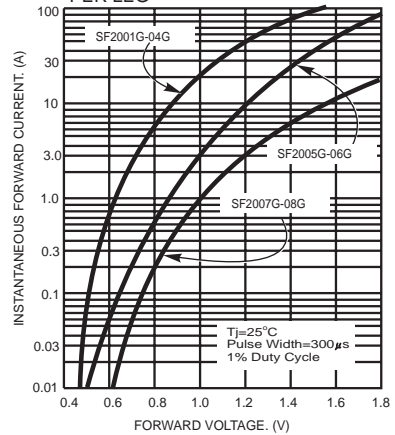


FIG.4- TYPICAL JUNCTION CAPACITANCE PER LEG

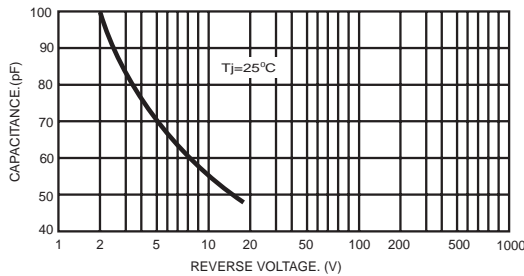
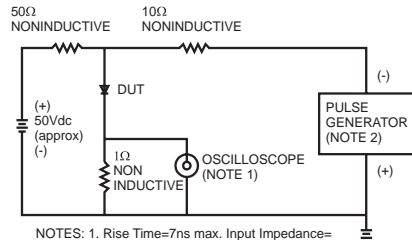


FIG.6- REVERSE RECOVERY TIME CHARACTERISTIC AND TEST CIRCUIT DIAGRAM



NOTES: 1. Rise Time=7ns max. Input Impedance=1 megohm 22pF
2. Rise Time=10ns max. Source Impedance=50 ohms

