

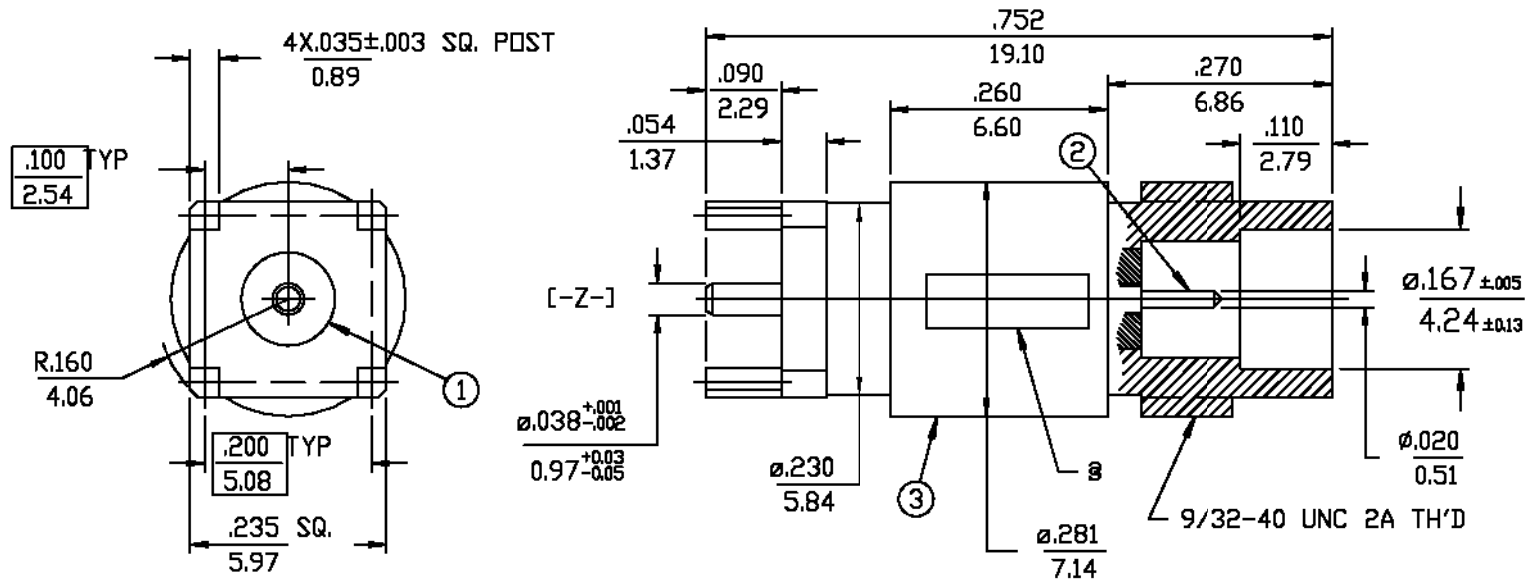
ITEM:

REV	DESCRIPTION	BY DATE	APP'D
H	ADDED ±.005 TO Ø.167 DIM PER ECR N° 3634	BENNETT 05/05/95	LAW

① INSULATOR
POLYTETRAFLUOROETHYLENE
(TFE TEFLON)

② CONTACT
50 MICROINCHES MIN,
GOLD OVER 150 MICROINCHES
MIN, NICKEL ON BERYLLIUM
COPPER

③ BODY
50 MICROINCHES MIN,
GOLD OVER COPPER
ON BRASS

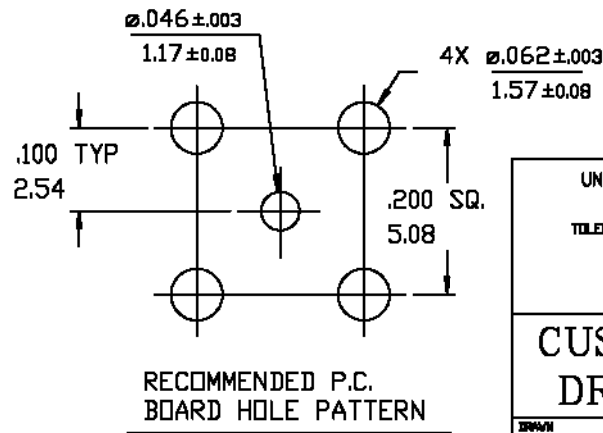


- ORDER UNDER CATALOG N° 121-24660.
MATES WITH CATALOG N° 121-24671.
- FOR DIMS. NOT SHOWN SEE MIL-C-39012
SERIES SMC.

8 IDENTIFICATION MARKING:
WINCHESTER ELECTRONICS LOGO,
AND DATE CODE TO BE MARKED
IN APPROXIMATE LOCATION SHOWN.

4. CONNECTOR TEMPERATURE RANGE:
- OPERATING: -40°C to 85°C
- STORING: -55°C to 100°C

5. CONNECTOR ELECTRICAL RATINGS:
- IMPEDANCE: 50Ω, NOM.
- FREQUENCY: 0 to 10 GHz
- VSWR: 1.3 MAX (0 to 4 GHz)
- VOLTAGE: 500 VOLTS, PEAK
- DIELECTRIC: 1.5 kV, RMS



UNLESS OTHERWISE SPECIFIED: DIMENSIONS ARE IN INCHES OR INCHES / MM		Litton	
TOLERANCES		Winchester Electronics	
DECIMALS	XX ± .02/0.5	400 PARK ROAD WATERTOWN, CONNECTICUT 06795	
XXX	± .007/0.18		
ANGLES ± 1°		SCALE: 6:1	
CUSTOMER DRAWING		TITLE	
DRAWN J.M.G. 11/04/92		SMC - STRAIGHT JACK P.C. MOUNT (Ø KEY)	
CHECKED			
DATE			
APPROVED LAW 12/14/92		REV. B 24660	
DATE		SHEET 1 OF 1	
APPROVED		REV. H	
DATE			